

Figure 6. Locations of high-water marks along Riley Creek in and near the village of Bluffton, Ohio.

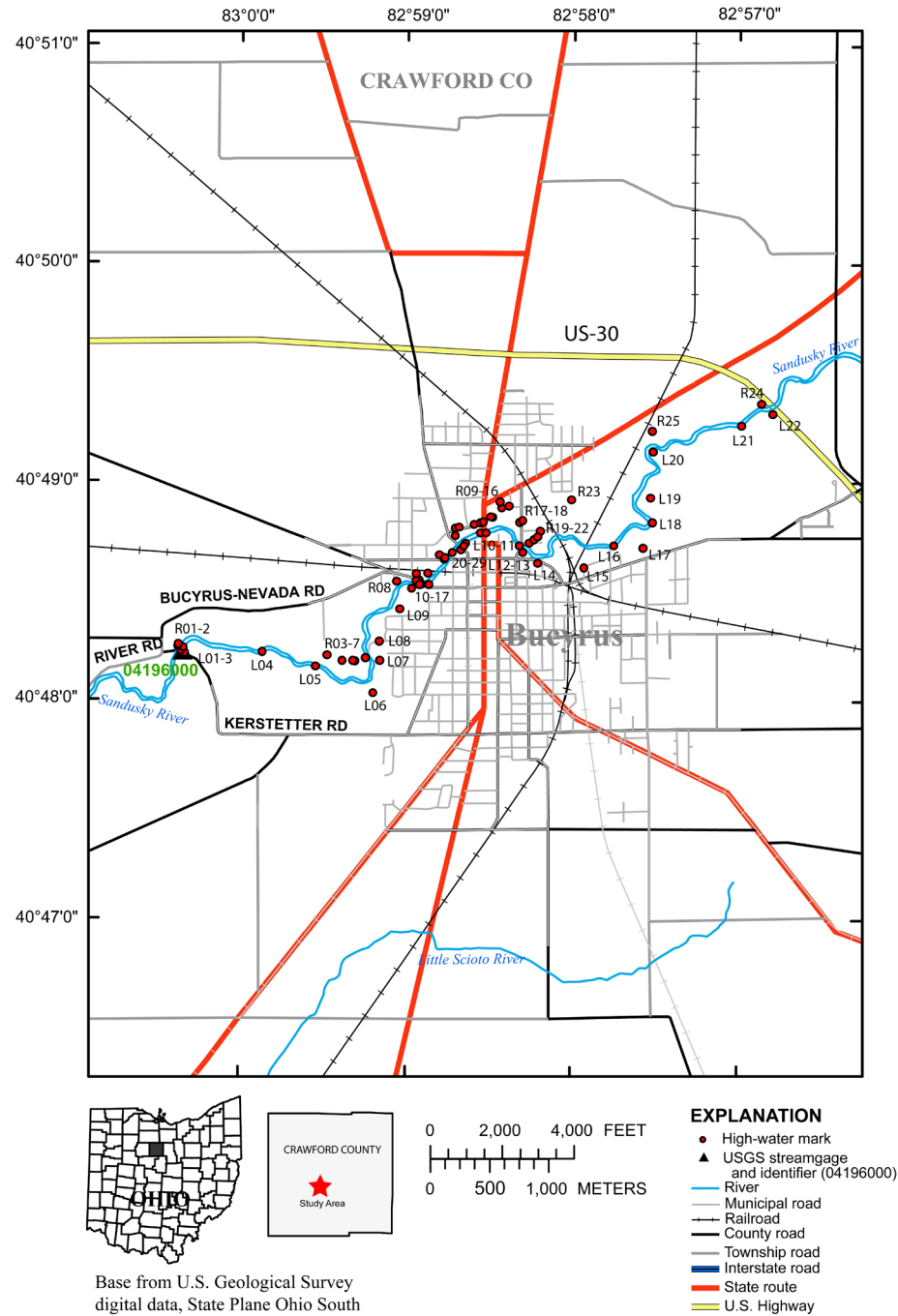


Figure 7. Locations of high-water marks along the Sandusky River in and near the city of Bucyrus, Ohio.

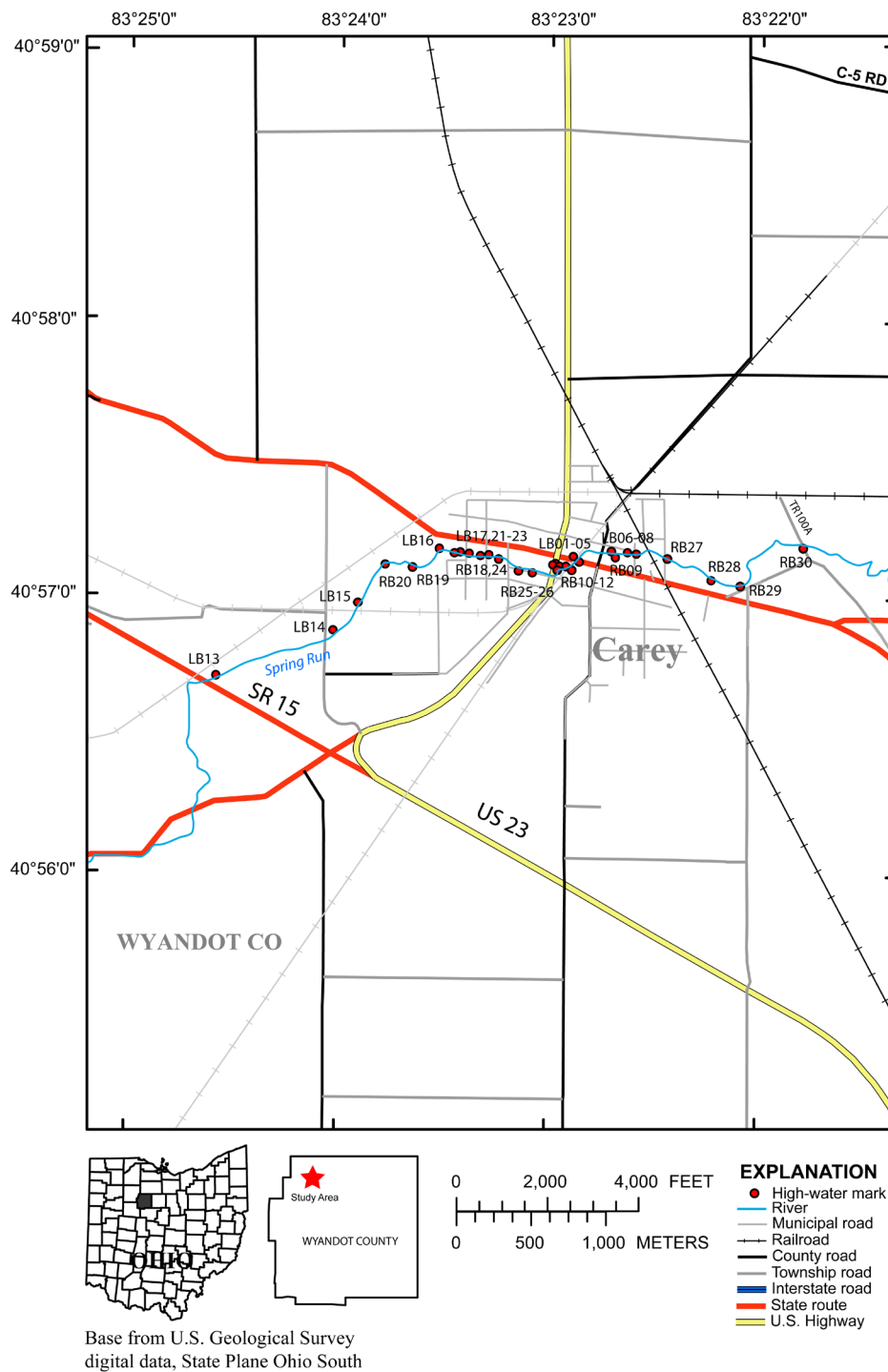


Figure 8. Locations of high-water marks along Spring Run in and near the village of Carey, Ohio.

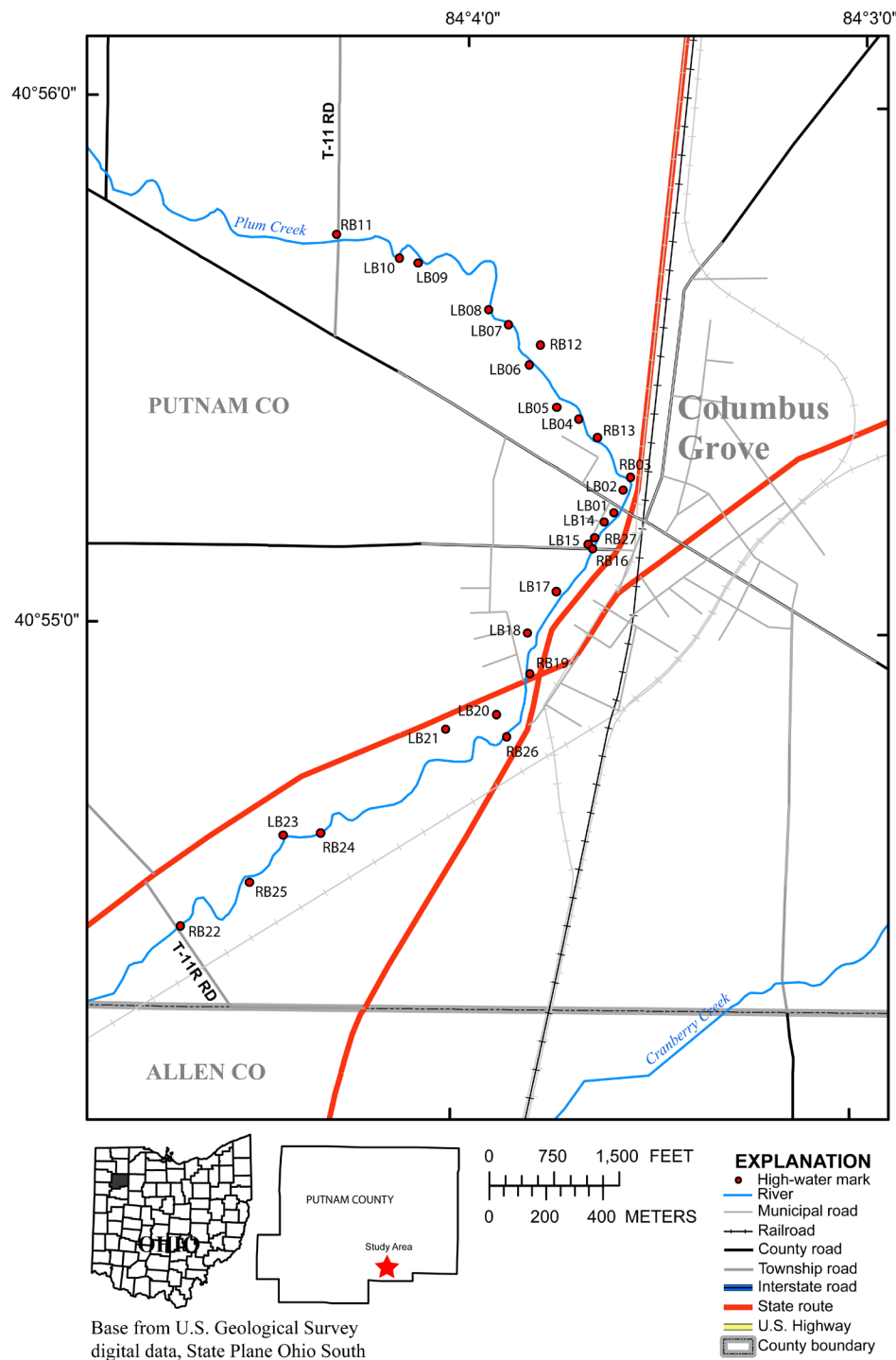


Figure 9. Locations of high-water marks along Plum Creek in and near the village of Columbus Grove, Ohio.

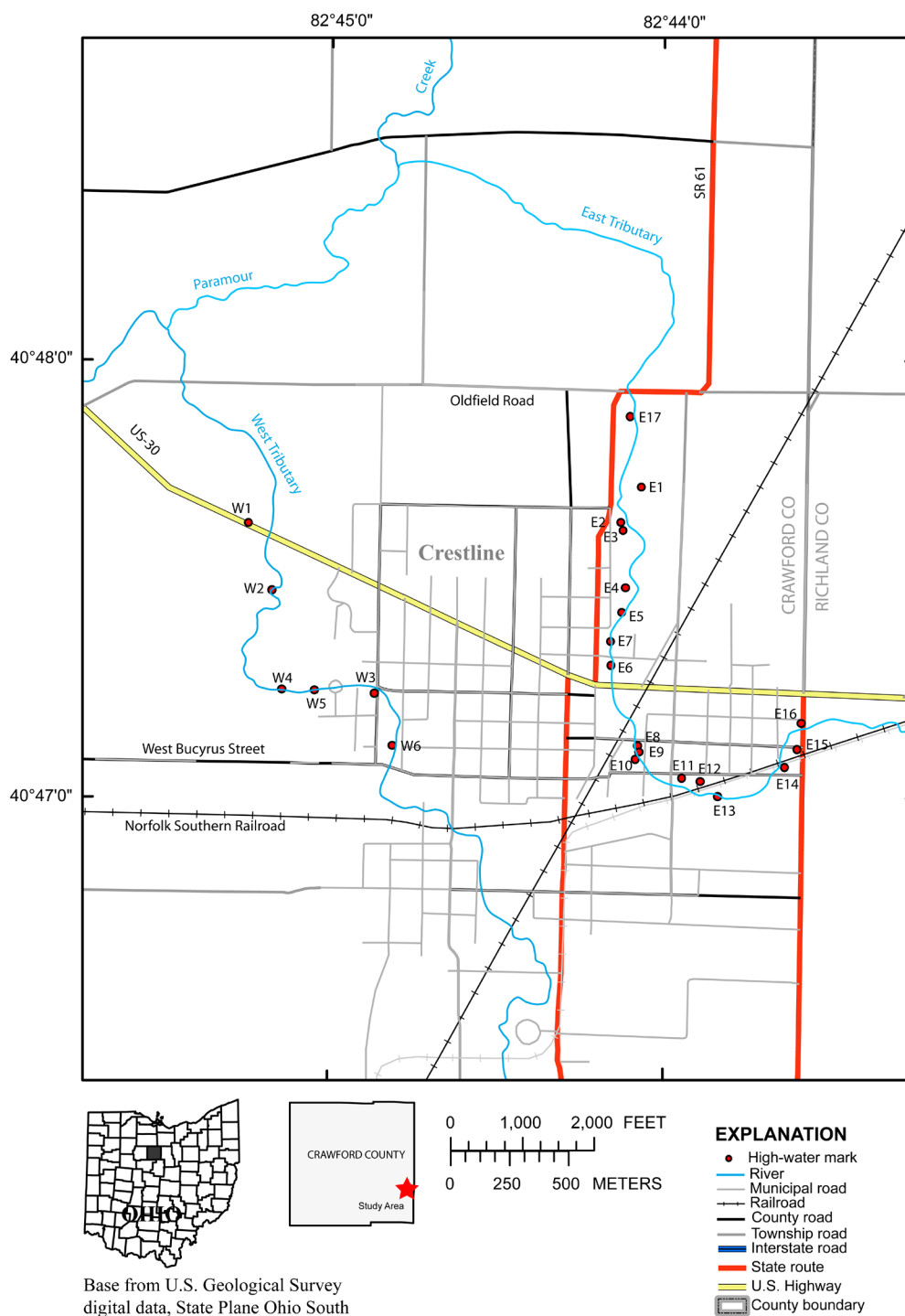


Figure 10. Locations of high-water marks along east and west unnamed tributaries of Paramour Creek in and near the village of Crestline, Ohio.

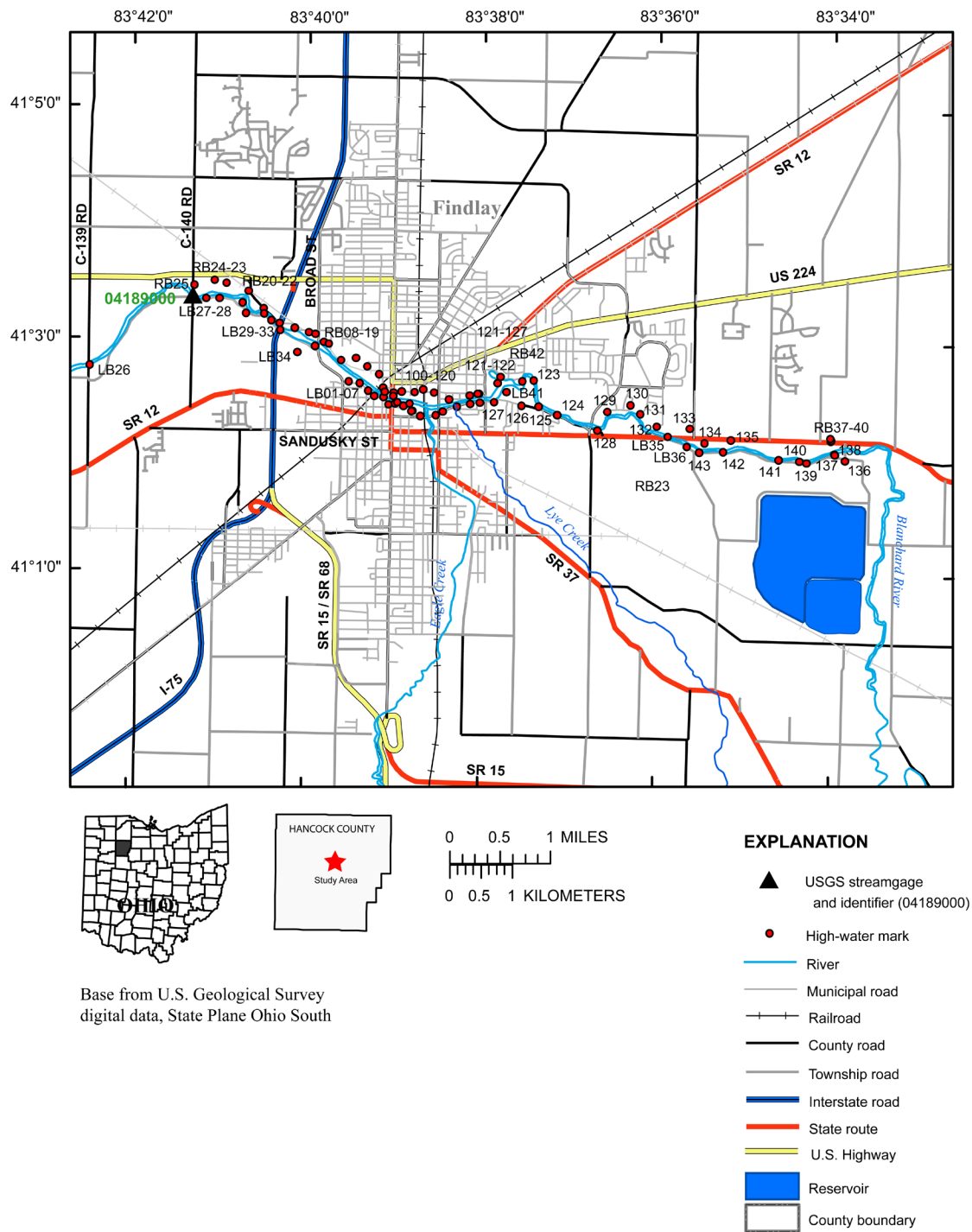


Figure 11. Locations of high-water marks along Blanchard River in and near the city of Findlay, Ohio.

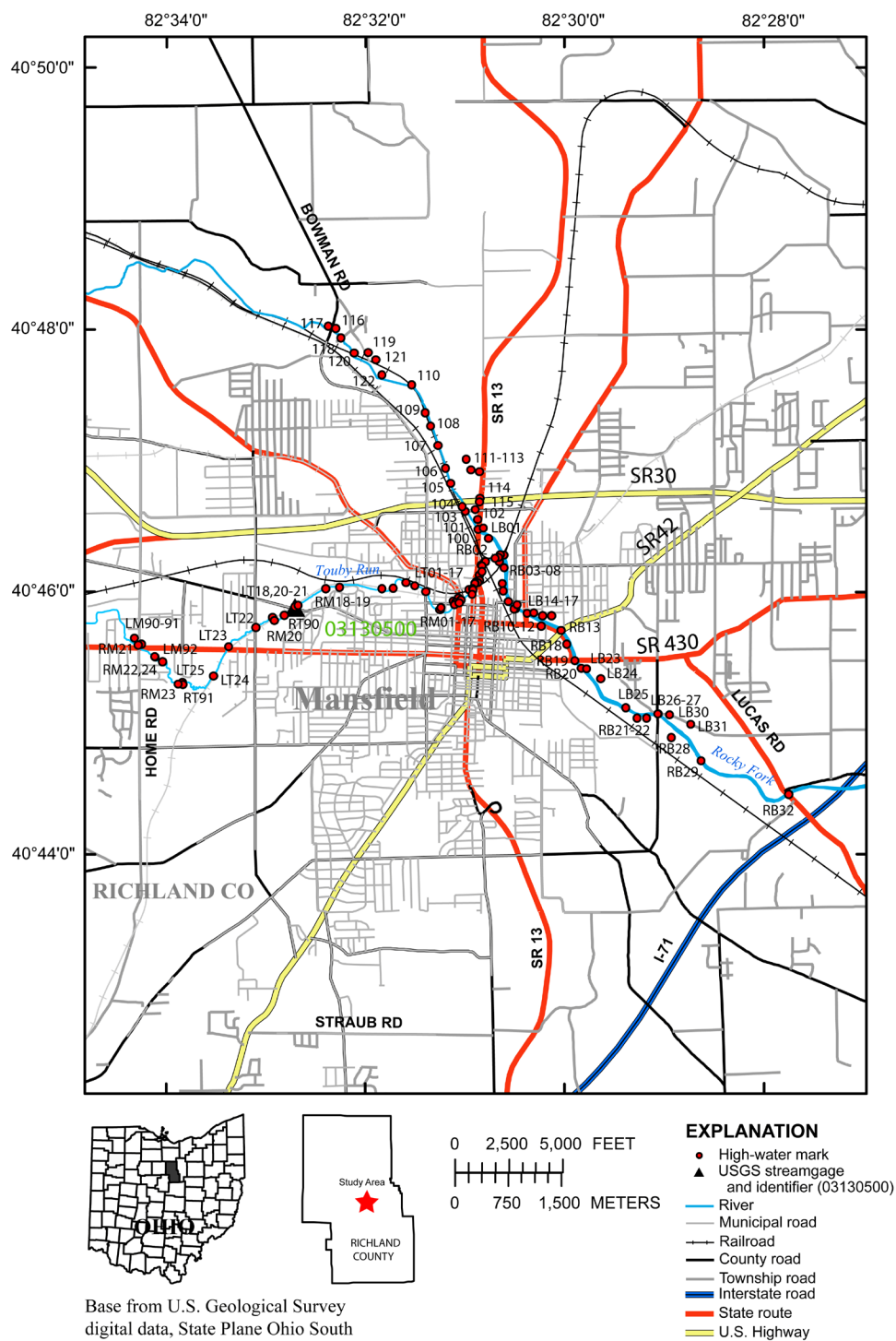


Figure 12. Locations of high-water marks along Rocky Fork Mohican River and Touby Run in and near the city of Mansfield, Ohio.

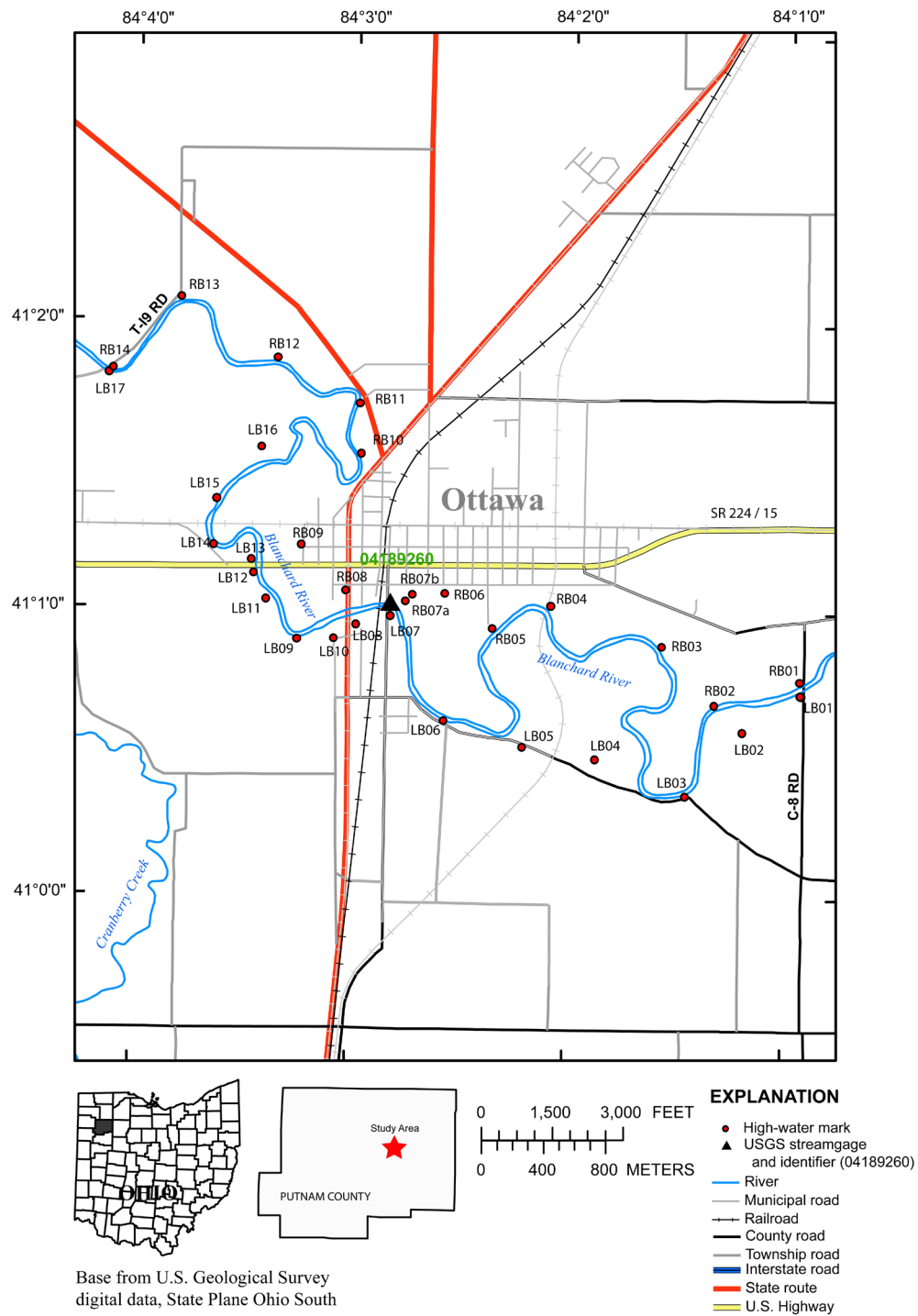


Figure 13. Locations of high-water marks along the Blanchard River in and near the city of Ottawa, Ohio.

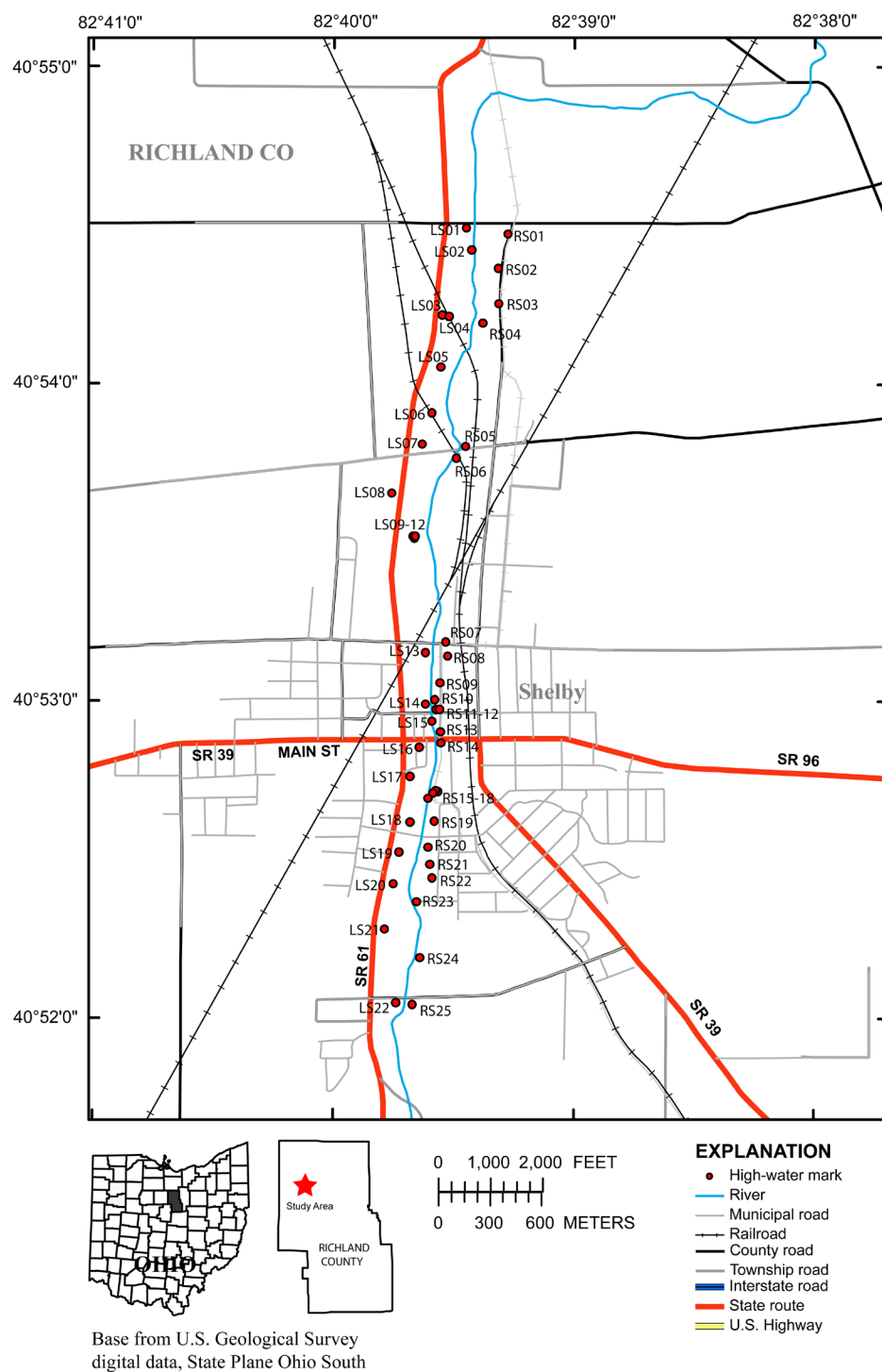


Figure 14. Locations of high-water marks along the Black Fork Mohican River in and near the city of Shelby, Ohio.

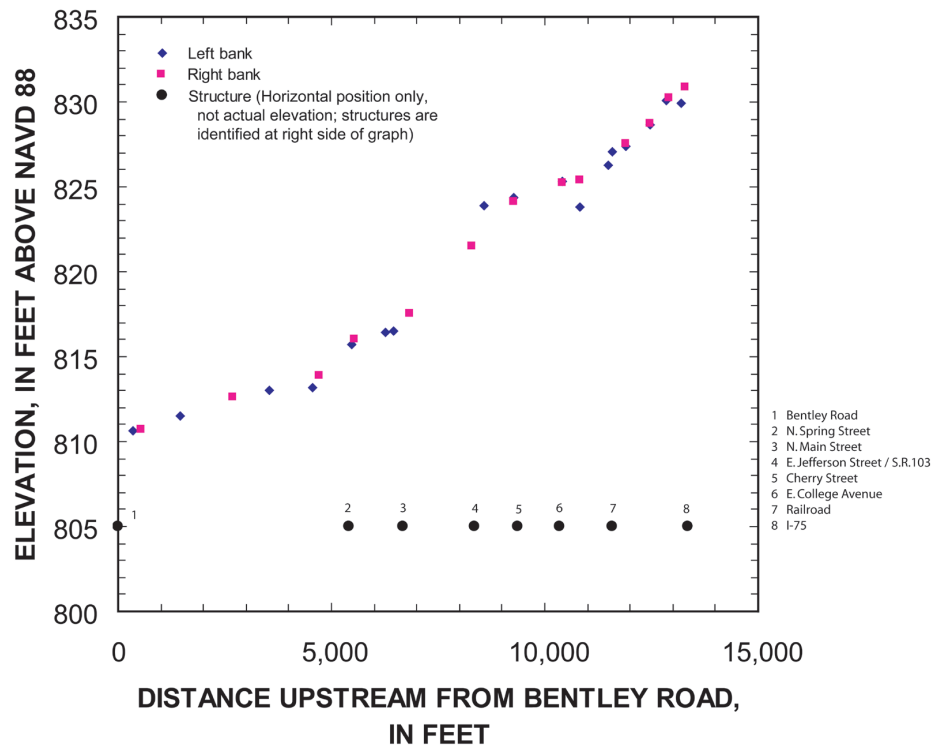


Figure 15. High-water-mark profile for Riley Creek in and near the village of Bluffton, Ohio.

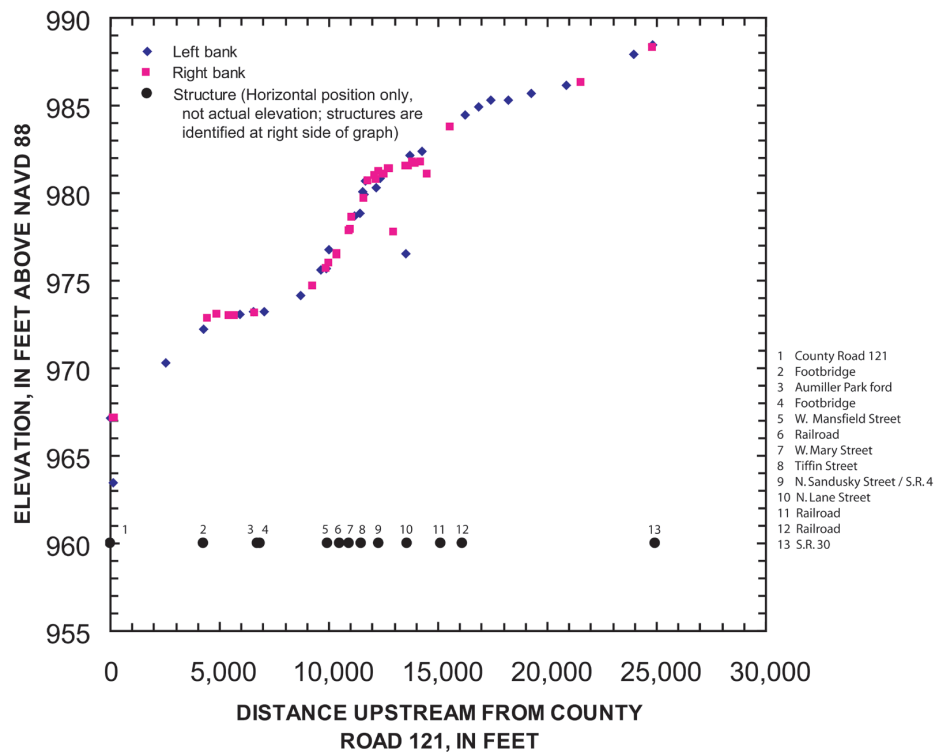


Figure 16. High-water-mark profile for the Sandusky River in and near the city of Bucyrus, Ohio.

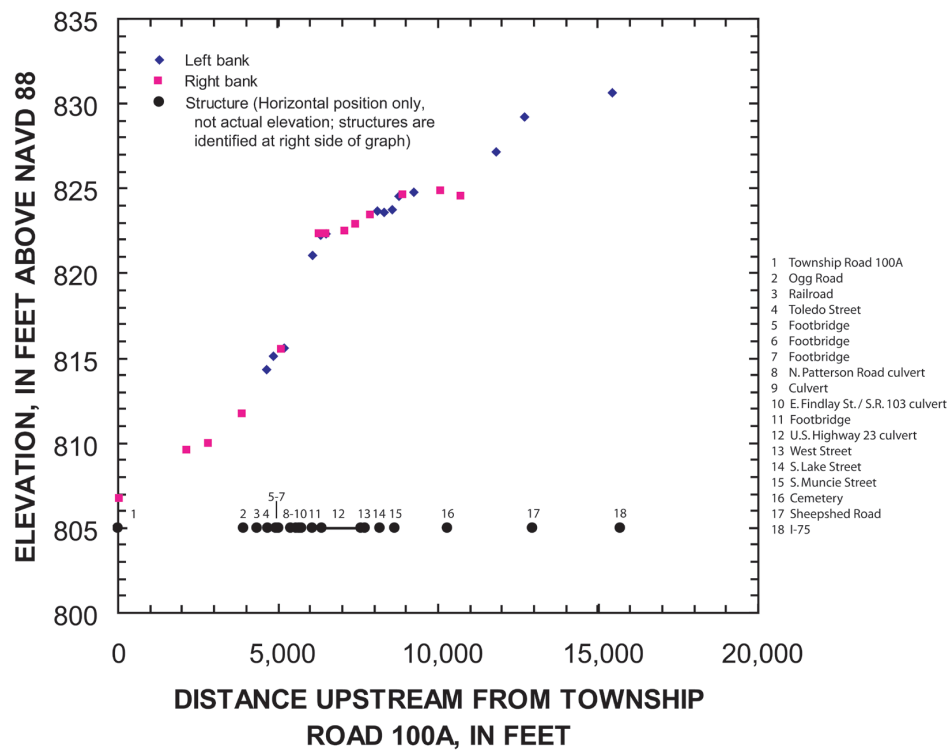


Figure 17. High-water-mark profile for Spring Run in and near the village of Carey, Ohio.

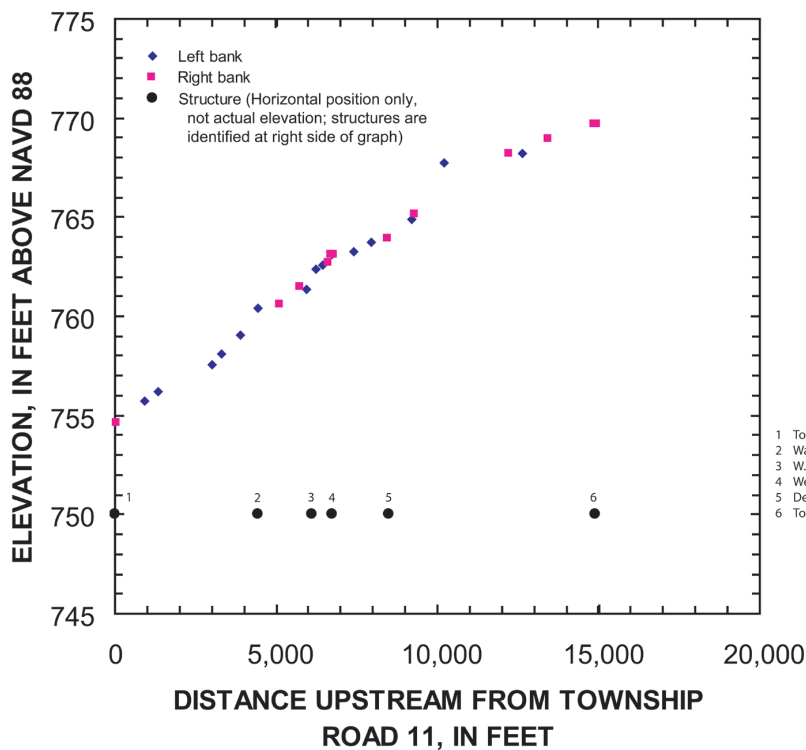


Figure 18. High-water-mark profile for Plum Creek in and near the village of Columbus Grove, Ohio.

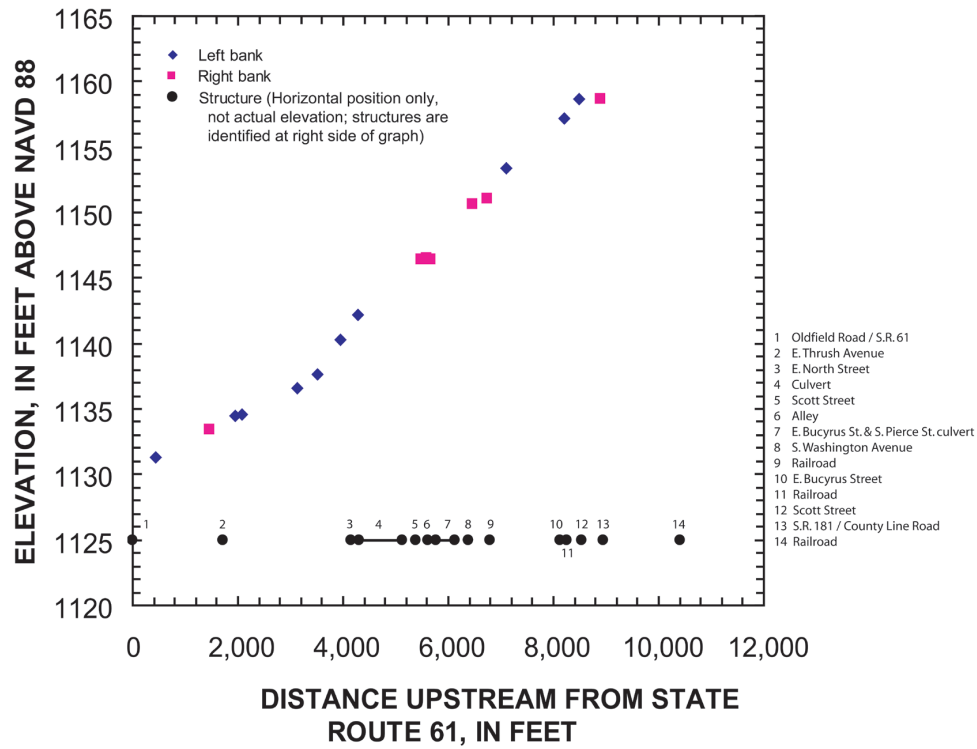


Figure 19. High-water-mark profile for the east unnamed tributary to Paramour Creek in and near the village of Crestline, Ohio.

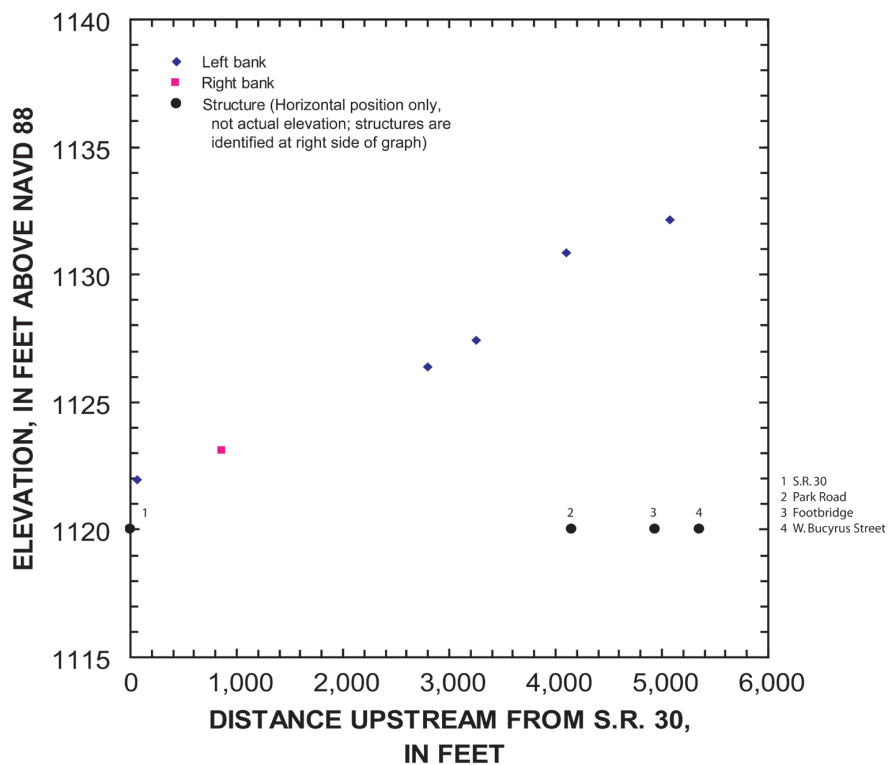


Figure 20. High-water-mark profile for the west unnamed tributary to Paramour Creek in and near the village of Crestline, Ohio.

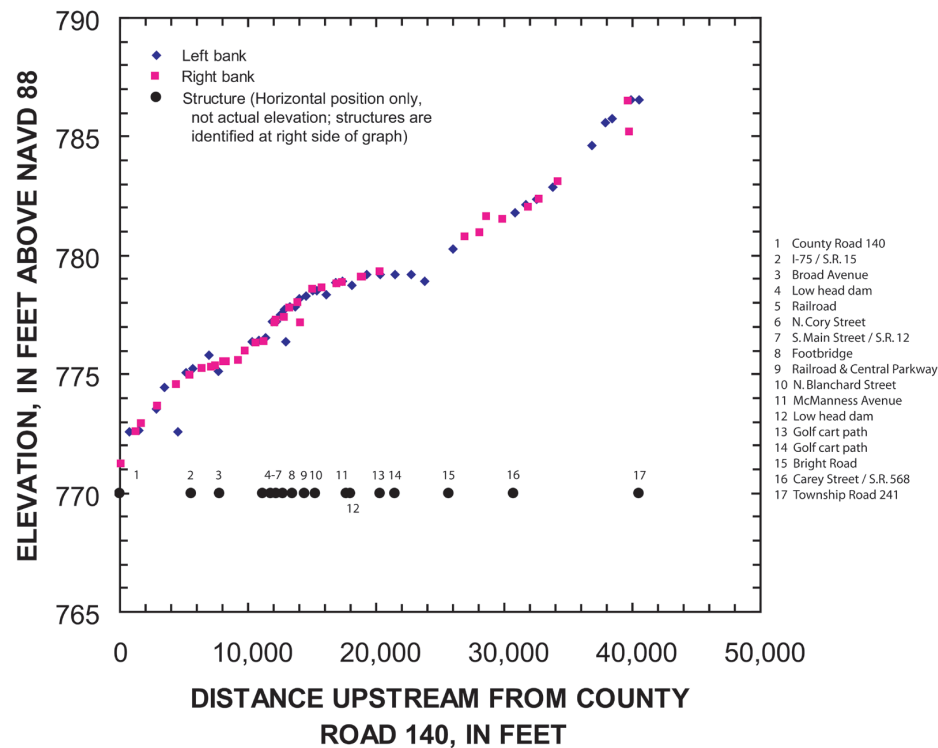


Figure 21. High-water-mark profile for the Blanchard River in and near the city of Findlay, Ohio.

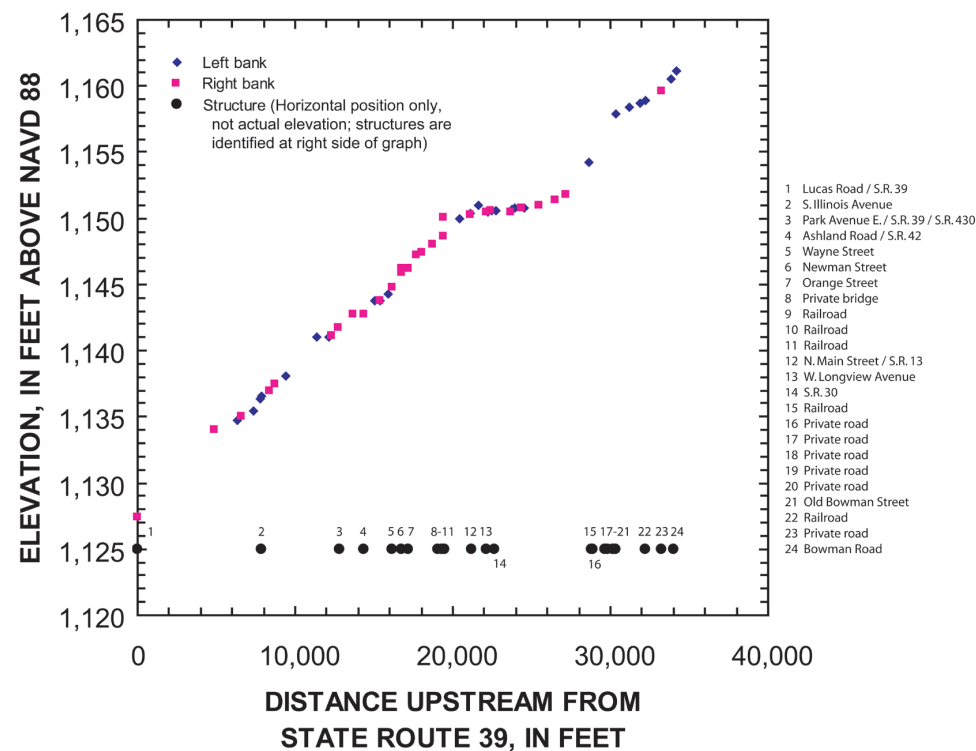


Figure 22. High-water-mark profile for the Rocky Fork Mohican River in and near the city of Mansfield, Ohio.

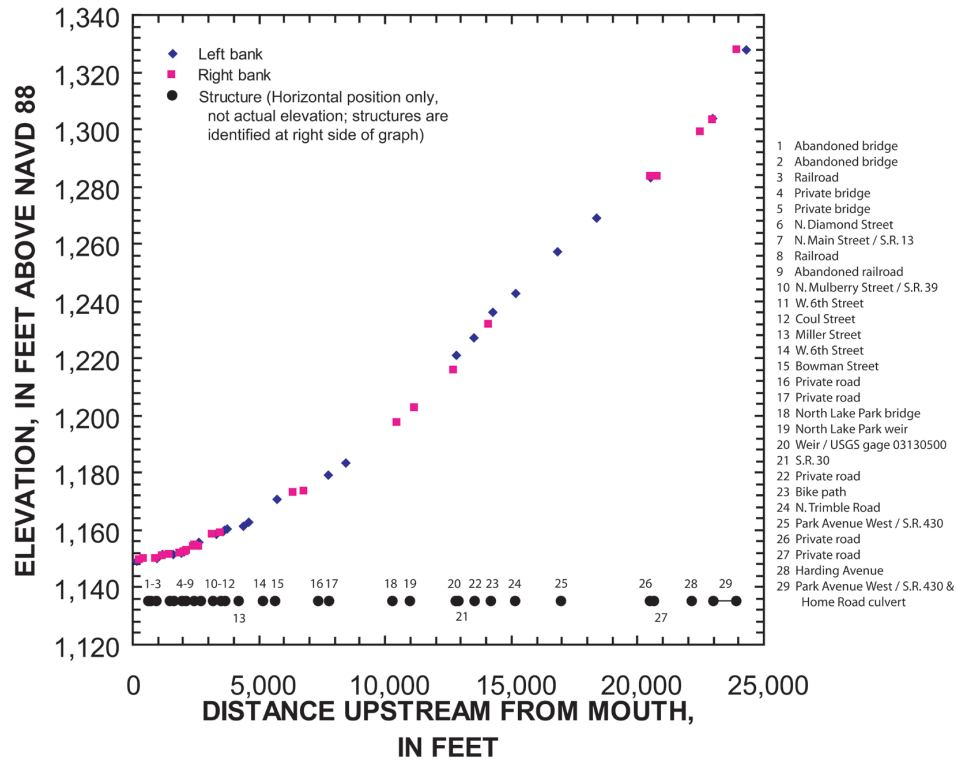


Figure 23. High-water-mark profile for Touby Run in and near the city of Mansfield, Ohio.

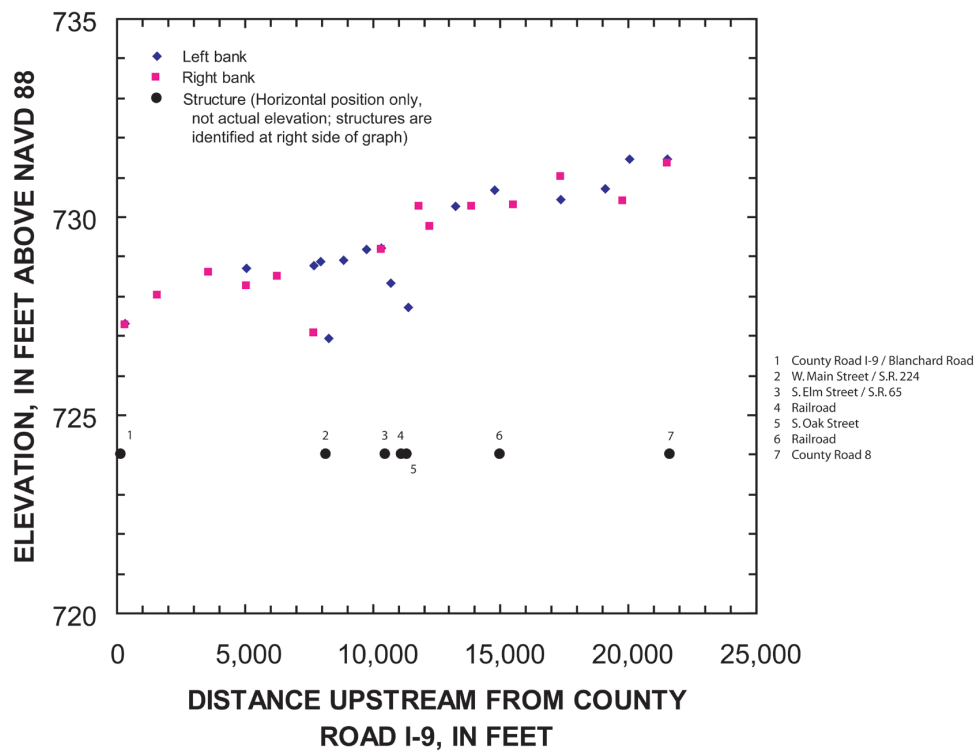


Figure 24. High-water-mark profile for the Blanchard River in and near the city of Ottawa, Ohio.

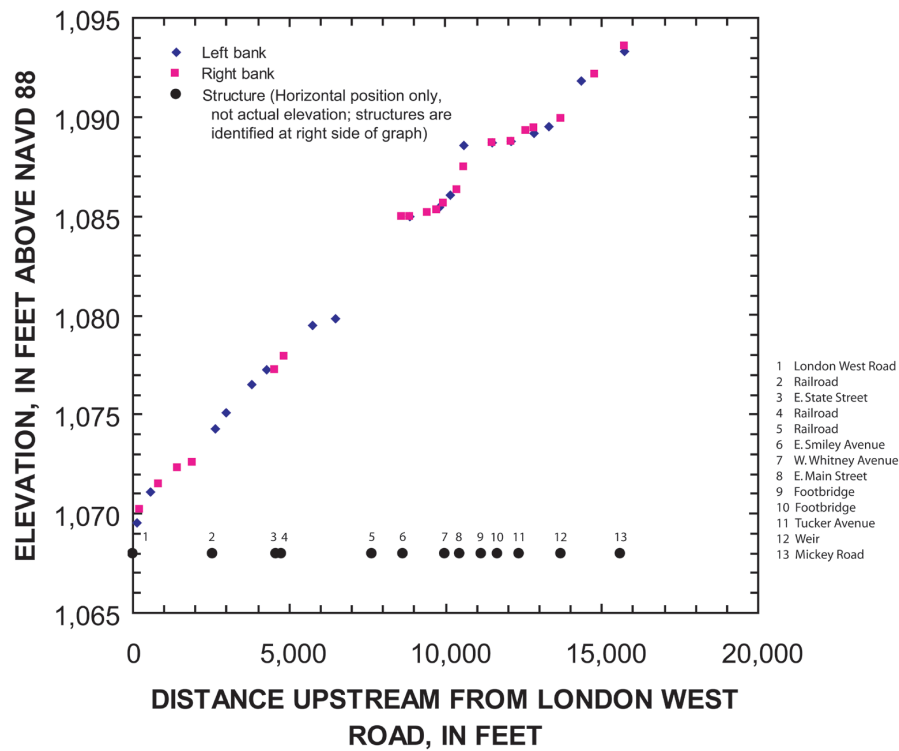


Figure 25. High-water-mark profile for the Black Fork Mohican River in and near the city of Shelby, Ohio.

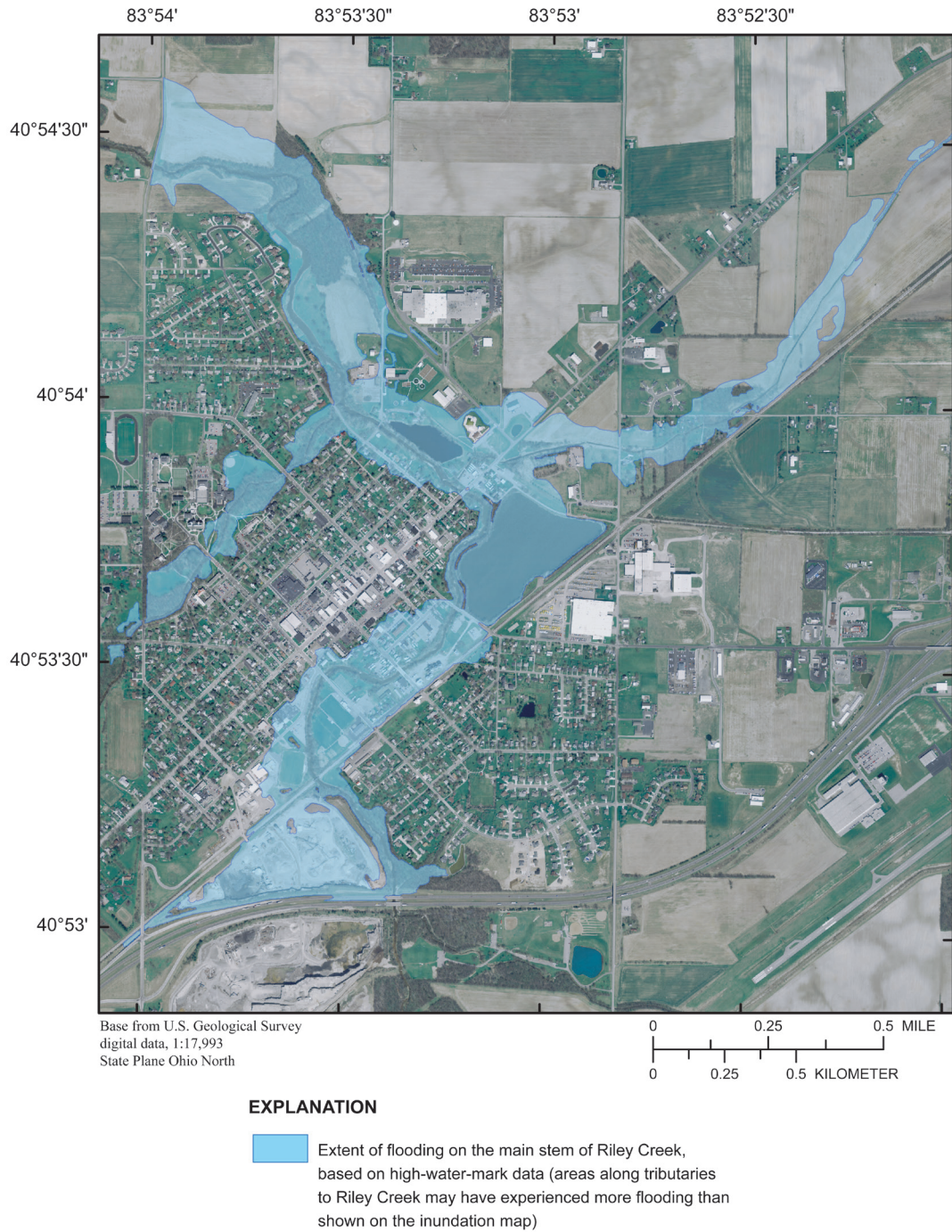
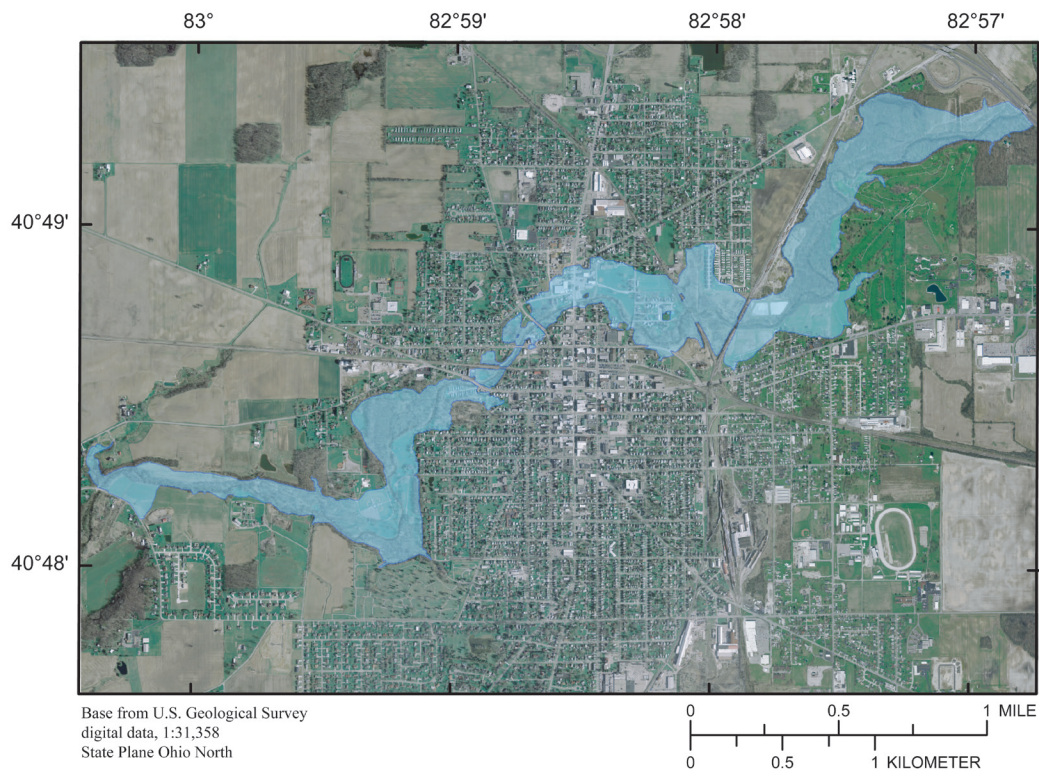


Figure 26. Estimated flood-inundation area for Riley Creek in and near the village of Bluffton, Ohio.



EXPLANATION

- Extent of flooding on the main stem of the Sandusky River, based on high-water-mark data (areas along tributaries to the Sandusky River may have experienced more flooding than shown on the inundation map)

Figure 27. Estimated flood-inundation area for the Sandusky River in and near the city of Bucyrus, Ohio.

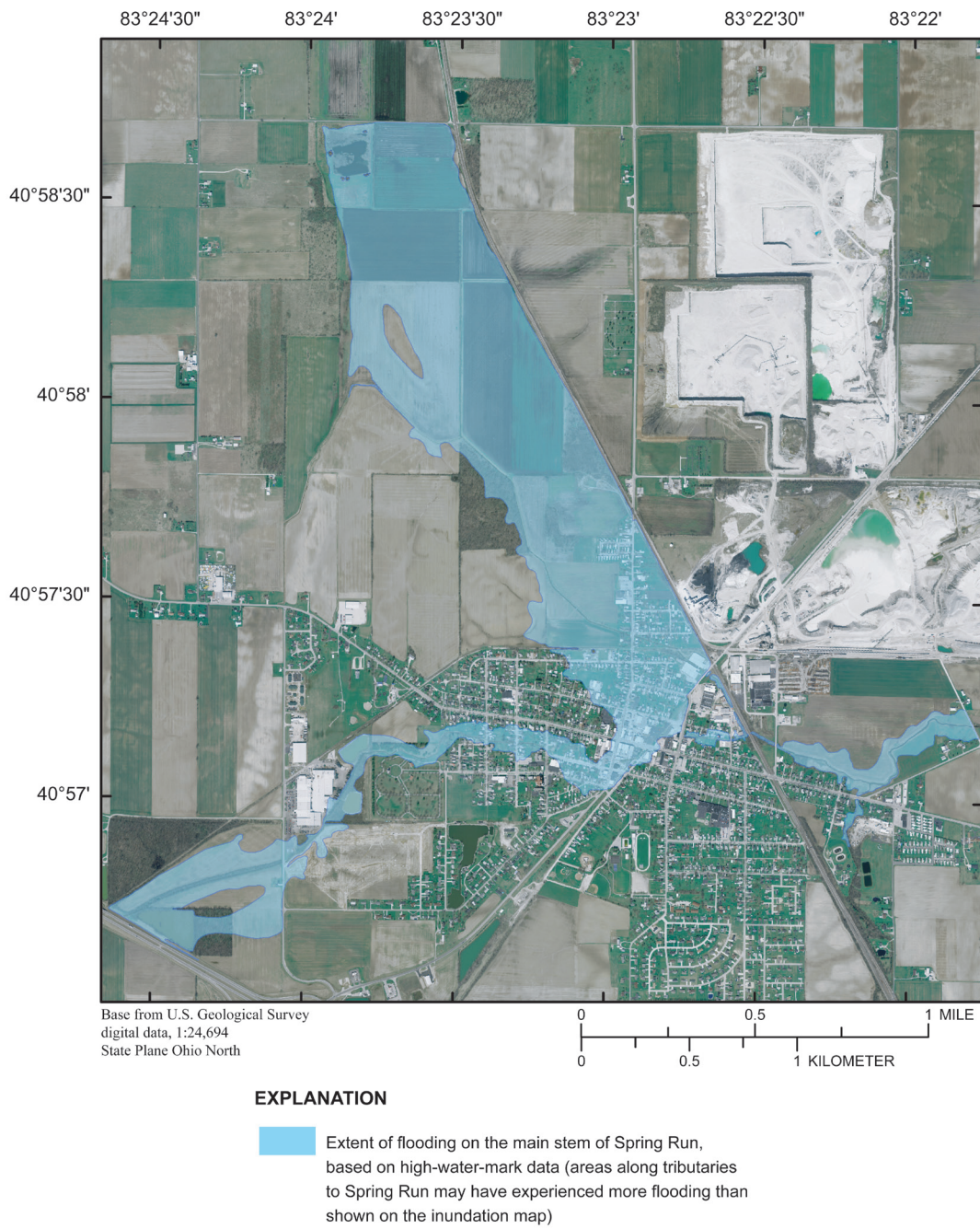


Figure 28. Estimated flood-inundation area for Spring Run in and near the village of Carey, Ohio.

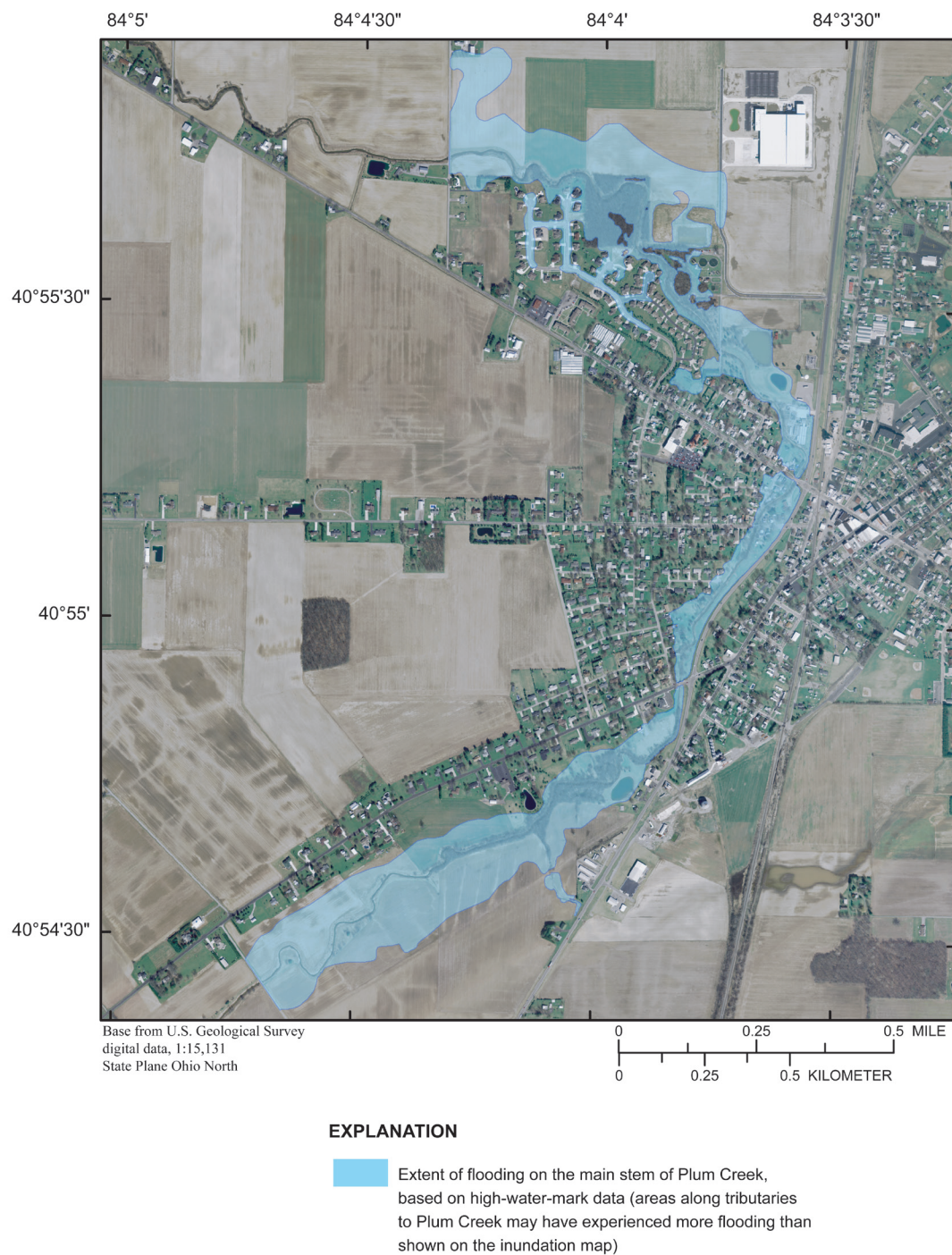


Figure 29. Estimated flood-inundation area for Plum Creek in and near the village of Columbus Grove, Ohio.

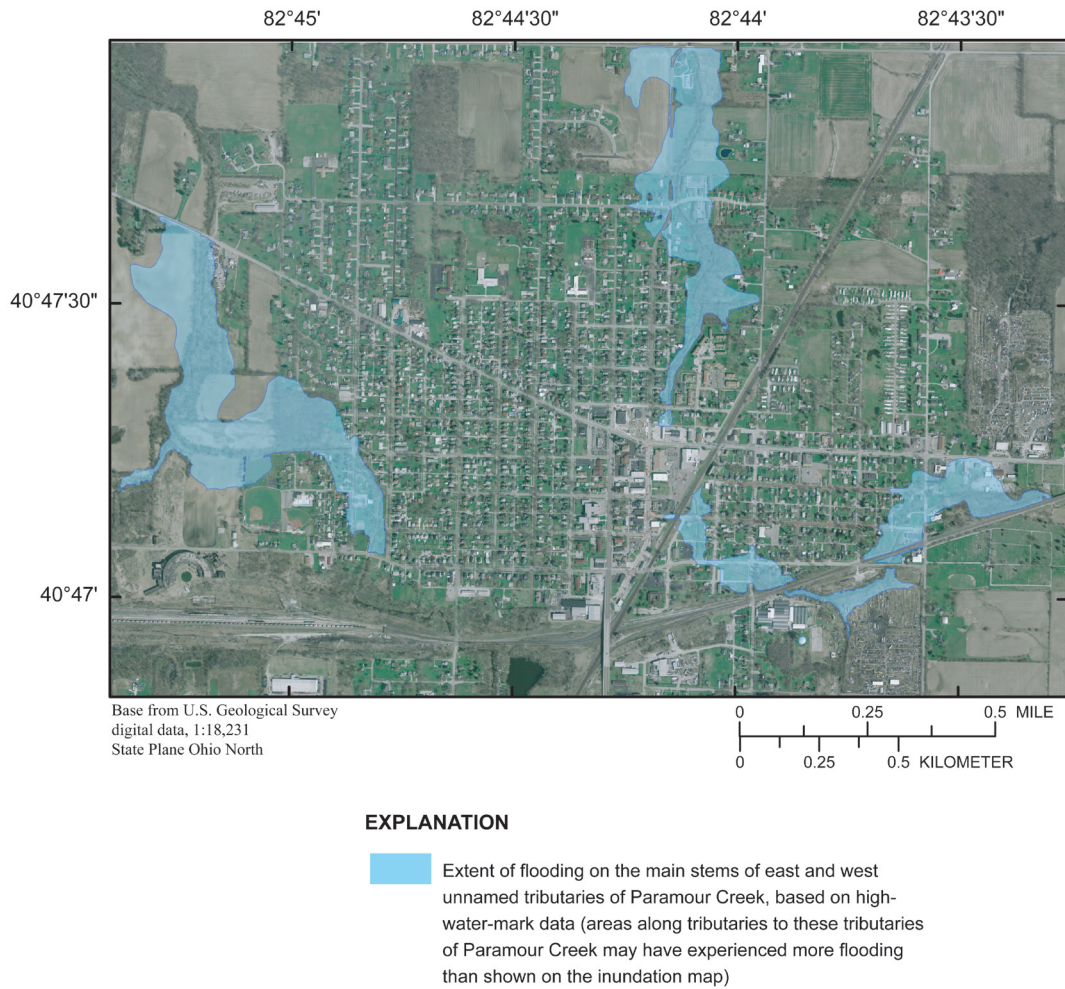


Figure 30. Estimated flood-inundation area for east and west unnamed tributaries of Paramour Creek in and near the village of Crestline, Ohio.

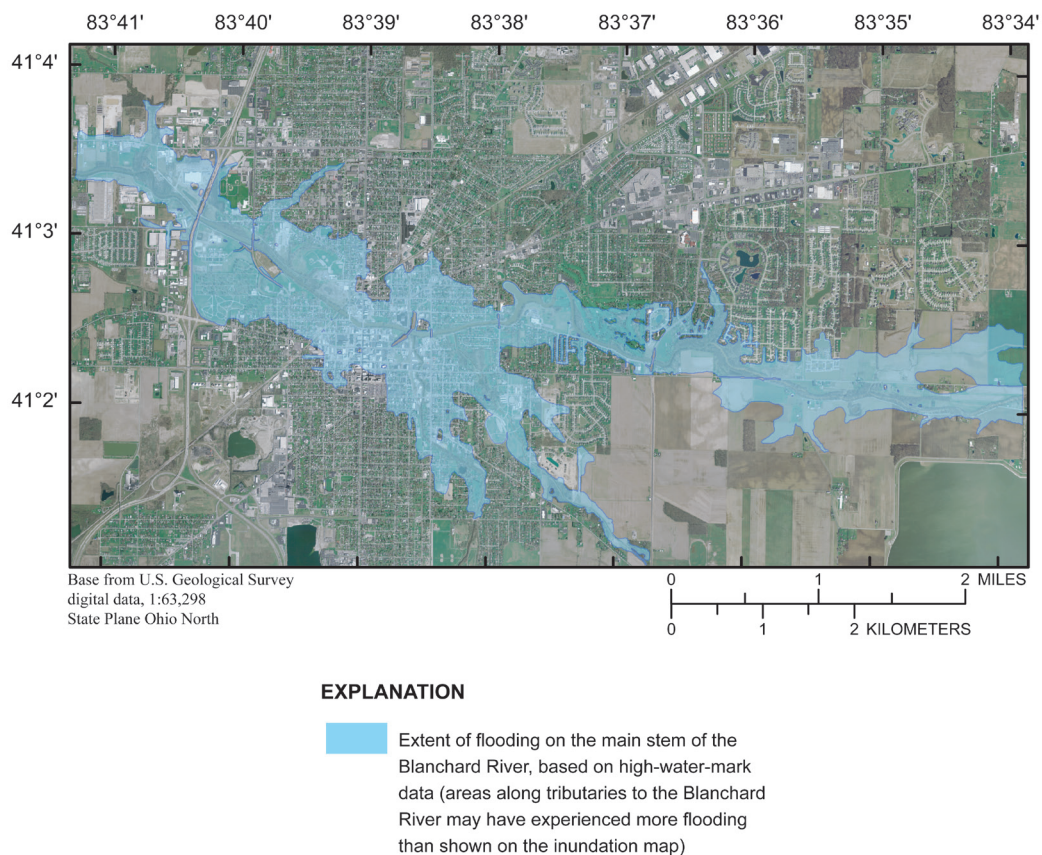


Figure 31. Estimated flood-inundation area for the Blanchard River in and near the city of Findlay, Ohio.

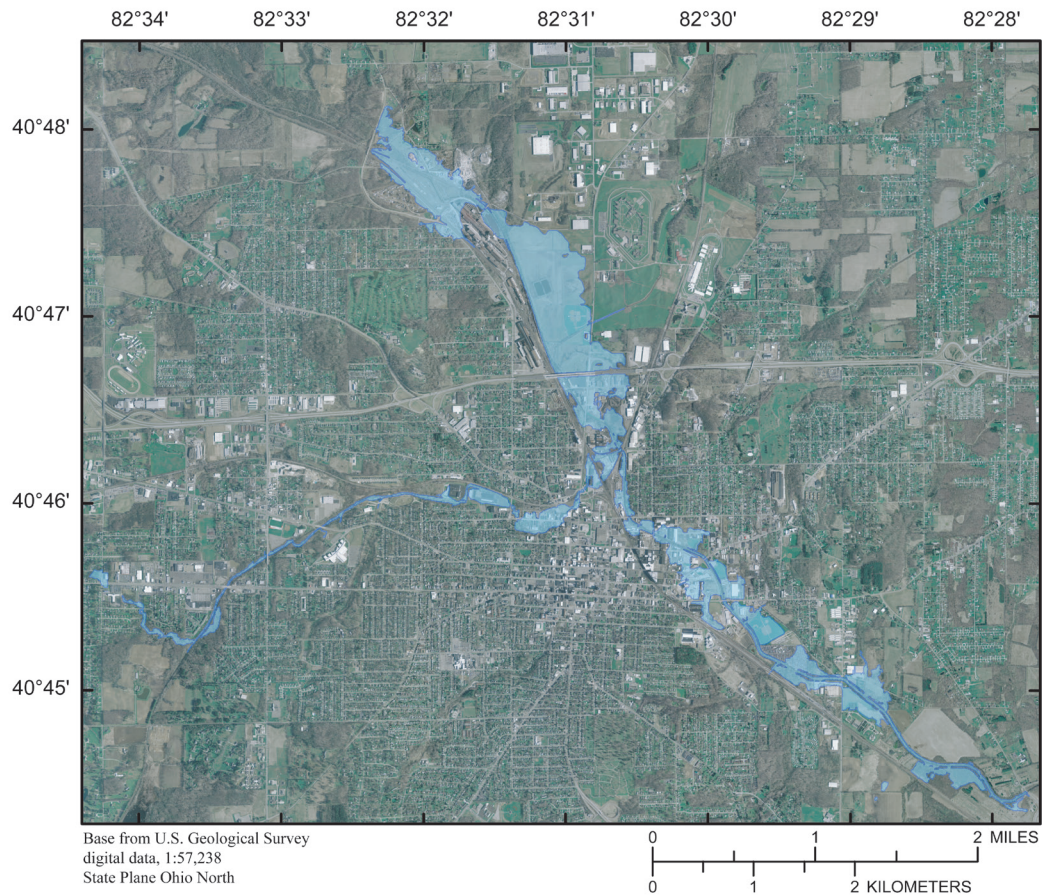


Figure 32. Estimated flood-inundation area for Rocky Fork Mohican River and Touby Run in and near the city of Mansfield, Ohio.

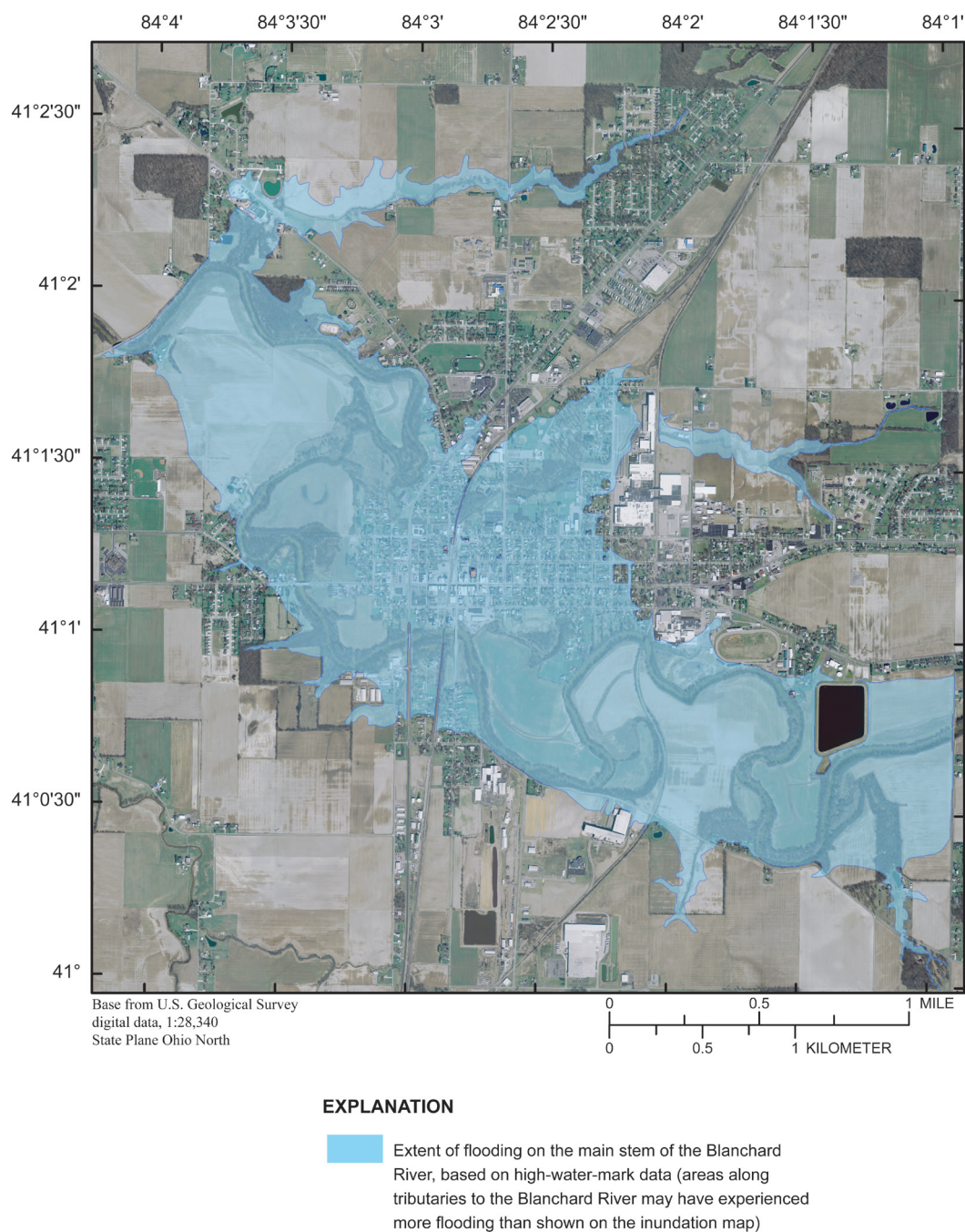


Figure 33. Estimated flood-inundation area for the Blanchard River in and near the city of Ottawa, Ohio.

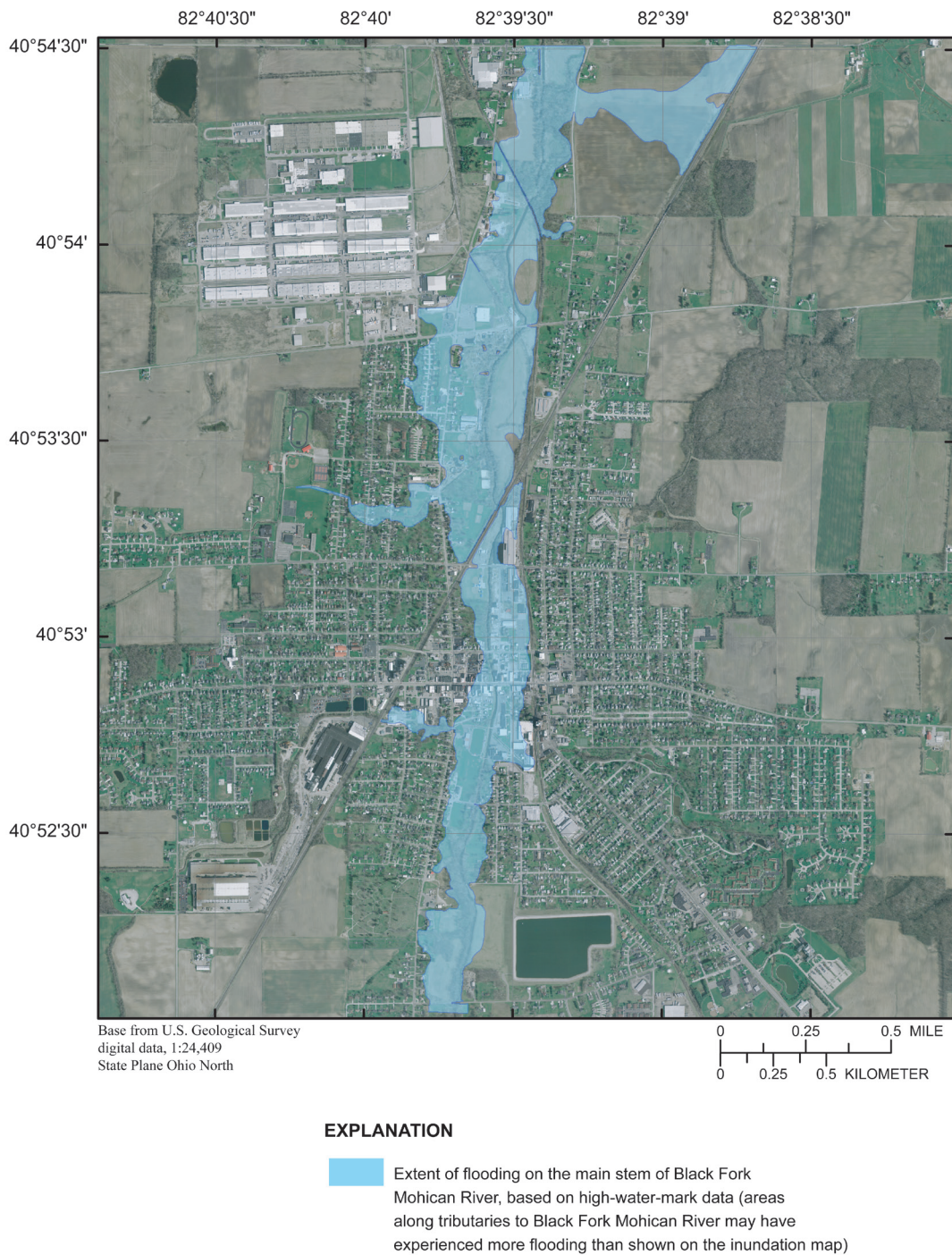


Figure 34. Estimated flood-inundation area for the Black Fork Mohican River in and near the city of Shelby, Ohio.

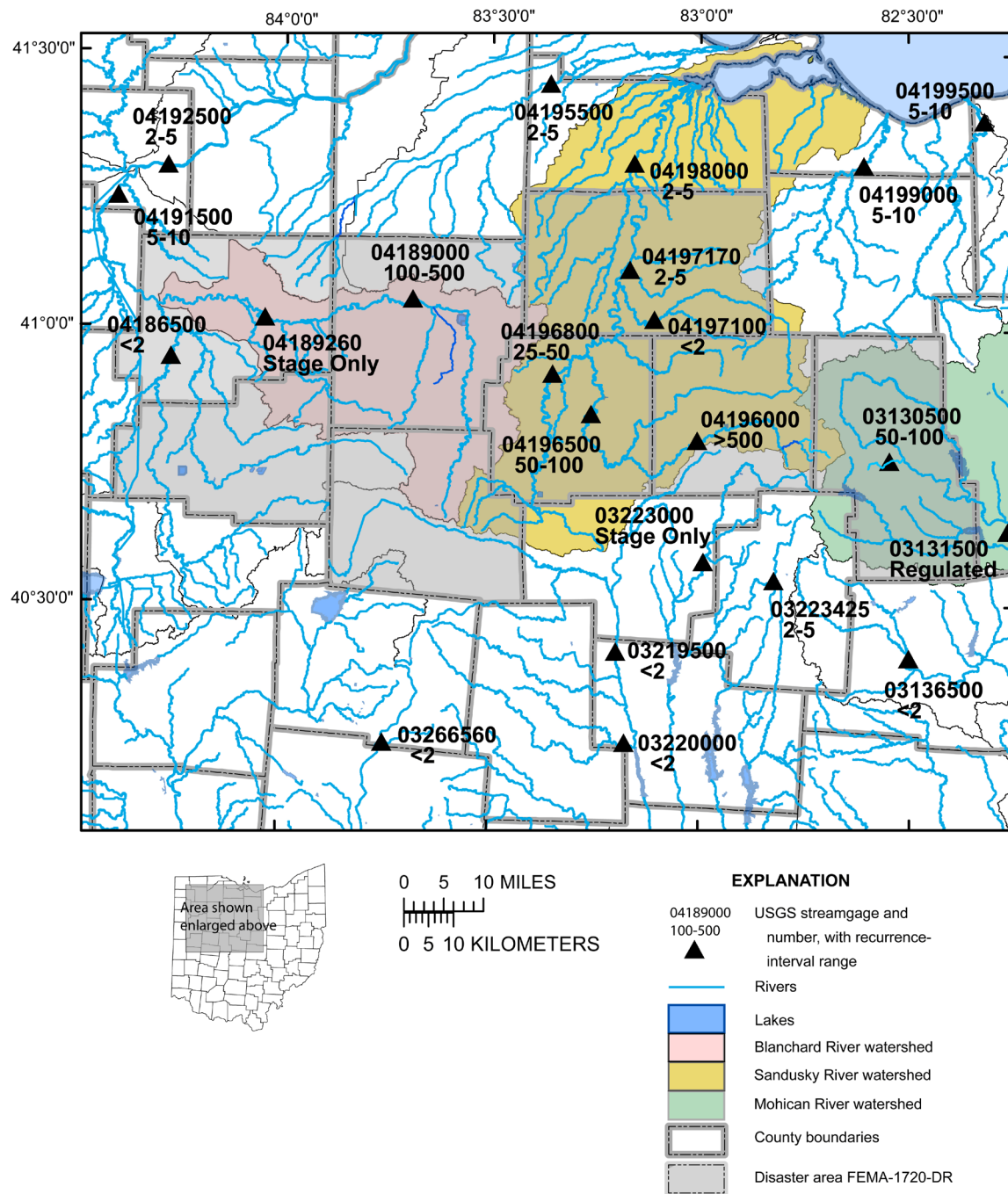


Figure 35. Location of selected USGS streamgages, with recurrence-interval ranges, in and around the designated disaster area for the flood of August 21-24, 2007.