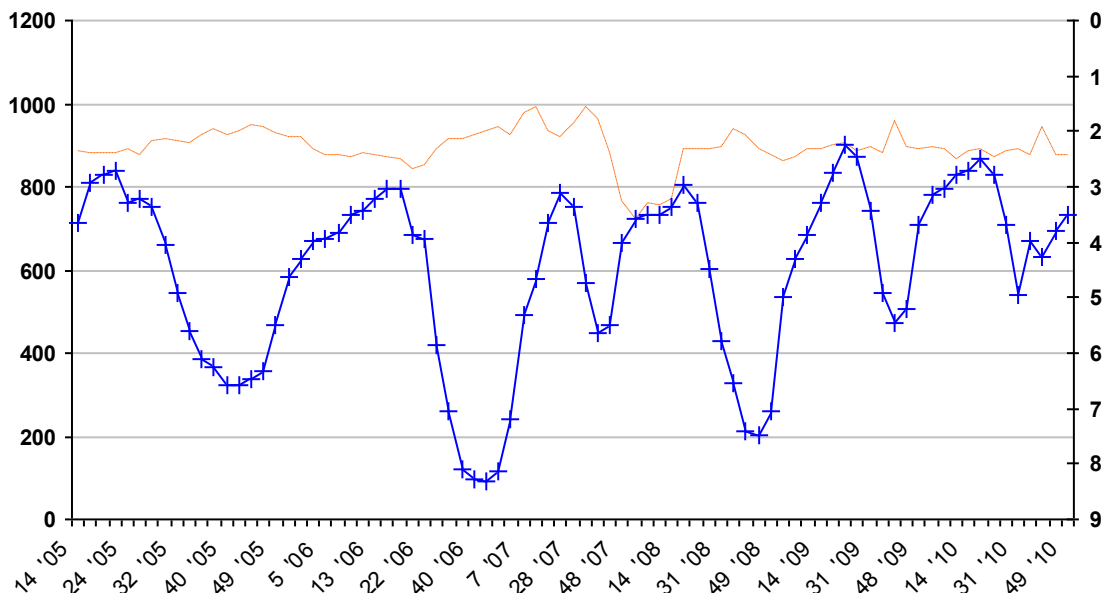


Appendix 3. Hydrograph for groundwater monitoring well GWM 12 modified from Danish Committee for Aid to Afghan Refugees (2011).

GWM_ID	12	Well type	Latitude	34.47863
District	Bagrami		Longitude	69.22864
Place	Gul buta		Organisation in charge of the measurement	
Method	manual (with modified well)		DACAAR	



EXPLANATION

+++++ depth to water (m) below ground surface – right vertical axis
 ——— groundwater specific conductance (µS/cm) – left vertical axis

The horizontal axis on the hydrograph is the date given as week number and year (for example, 14 '05 is week number 14 in 2005). The left vertical axis is the groundwater specific conductance in microsiemens per centimeter (µS/cm) and the right vertical is the depth to water in meters (m) below ground surface (bgs).