

Plate 53: DIATOMS FROM VARIOUS OR UNKNOWN LOCALITIES

Source of Material

All specimens are from slides in the Healey Collection (HC), held at the National Institute of Water and Atmospheric Research (NIWA), Greta Point, Wellington, New Zealand. Data on locality and maker of the slide have been added based on the slide labels. Where no locality is given, the slide presents a selected specimen.

Plate Fifty-three:

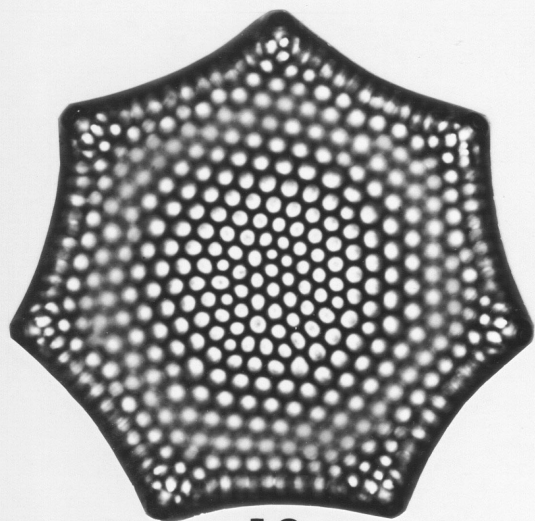
- 12-13 *Triceratium septangulatum* Kitton 1874. Slide HC-1778. See Schmidt's Atlas (1874-1959, pl. 85, figs. 1-2 and pl. 86, figs. 11-13) given as *T. grande* var. *septangulatum*.
- 14 *Mastogloia angulata* Lewis 1861. Slide HC-1815, Florida. See Hustedt (1933, fig. 885) and Foged (1975, pl. 13, figs. 1-2).
- 15 *Mastogloia angulata* Lewis 1861. Slide HC-3726, incorrectly identified as *M. apiculata*. See Foged (1975, pl. 12, figs. 2-3) correctly identified as *M. angulata* (compare with fig. 14). The original figure of W. Smith (1856, pl. 62, fig. 387) for *M. apiculata* agrees exactly with Foged (1975, pl. 14, figs. 9-10 and 13-14). The partectal band of *M. apiculata* is uniform throughout, whereas in *M. angulata* the central cells protrude noticeably.
- 16 *Lyrella durandii* (Kitton) Mann in Round, Crawford and Mann 1990. Slide HC-1082, Hong Kong. See Schmidt's Atlas (1874-1959, pl. 129, fig. 3) given as *Navicula durandii* var. *intermedia*, a specimen from Singapore.
- 17 *Mastogloia fimbriata* (Brightwell) Cleve 1895. Slide HC-1064, Viti Levu, Fiji. See Hustedt (1933, fig. 884) and Foged (1975, pl. 13, fig. 3) which exactly agrees with fig. 17.
- 18 *Cyclotella bodanica* Eulenstein in Grunow 1878, high focus-low focus. Slide HC-3703. See Schmidt's Atlas (1874-1959, pl. 224, figs. 29-32).
- 19 *Cocconeis extravagans* Janisch in Schmidt et al. 1894. Slide HC-1337, Kerguelen Islands. See Schmidt's Atlas (1874-1959, pl. 189, fig. 29). Slide HC-1337 in the Healey Collection is labeled "*Cocconeis magellanica*, select (= *imperatrix*) Kerguelan Island". According to the literature, the epithet "*magellanica*" has not been assigned in the genus *Cocconeis*. *C. magellanica* is, therefore, an invalid name. The reference "(= *imperatrix*)" on the slide label refers to *C. imperatrix* Schmidt 1894, but the specimen does not correspond to this species.
- 20 *Cocconeis extravagans* Janisch in Schmidt et al. 1894. Slide HC-1643, Adelaide, Australia. See Schmidt's Atlas (1874-1959, pl. 189, fig. 30). According to VanLandingham (1968b, p. 784), *Cocconeis extravagans* is a synonym of *C. costata* var. *kerguelensis* (Petit) Cleve (Cleve, 1895, p. 182).

- 21 *Nitzschia pulcherrima* (Grunow in Kitton) Grunow in Cleve and Möller 1878.
Slide HC-1371, Colon, Panama. This is an incorrect identification. See Schmidt's
Atlas (1874-1959, pl. 350, fig. 3 and pl. 351, fig. 1) which is of a specimen from
Colon.
- 22 *Tryblionella brightwellii* (Kitton in Pritchard) Mann in Round, Crawford and Mann
1990. Slide HC-1246, Sierra Leone. See Hendey (1958, pl. 6, fig. 6) identified as
Nitzschia brightwellii.

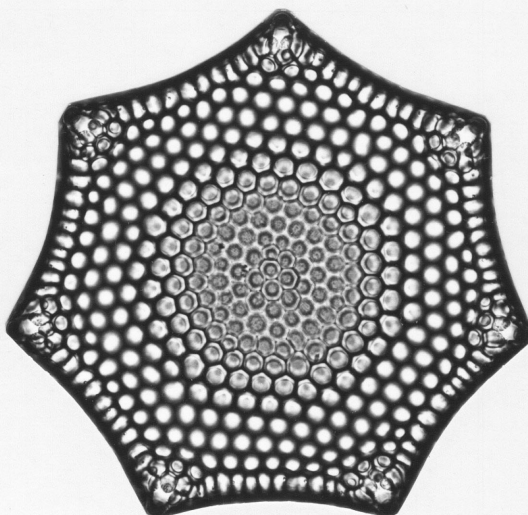
Magnifications: figs. 12-13: x250; figs. 21-22: x500; fig. 16: x750; all others: x1000

Scale Bar: scale bar is 120 microns for the figures at x250; 60 microns at x500;

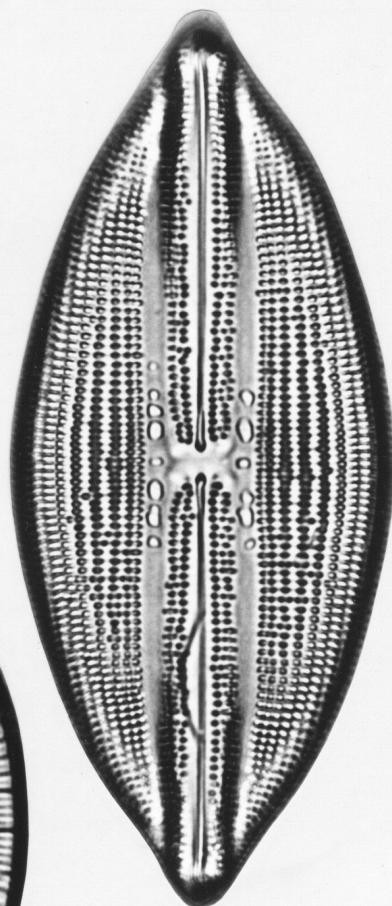
40 microns at x750; 30 microns at x1000



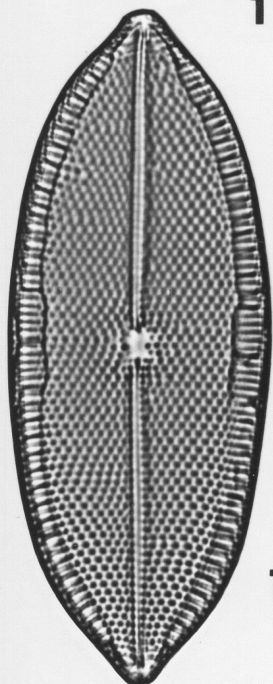
12



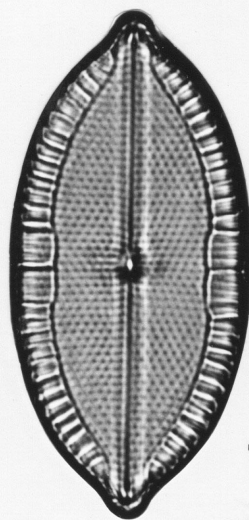
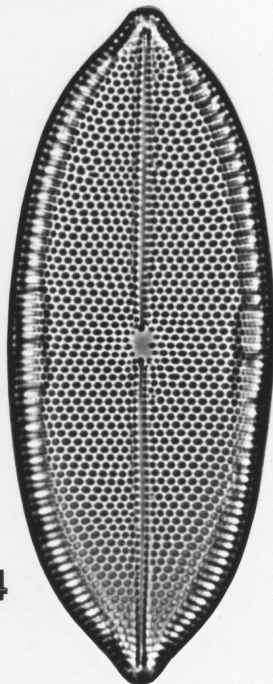
13



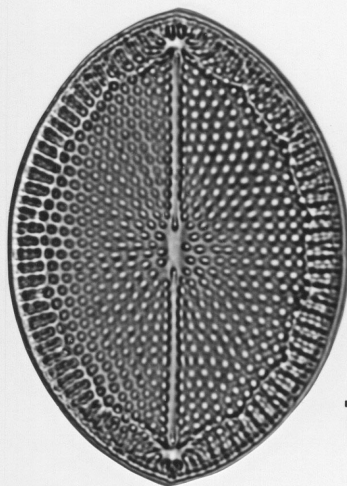
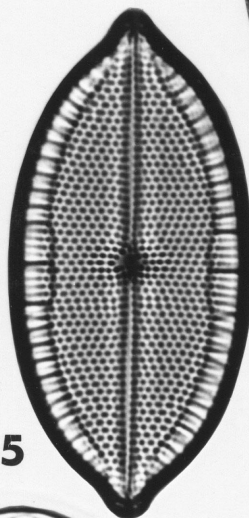
16



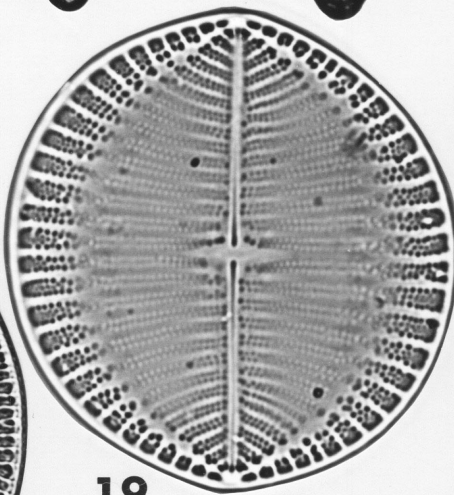
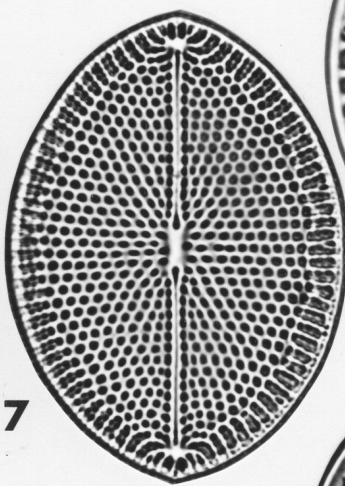
14



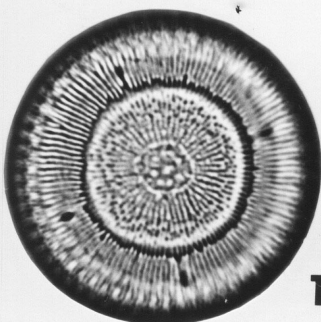
15



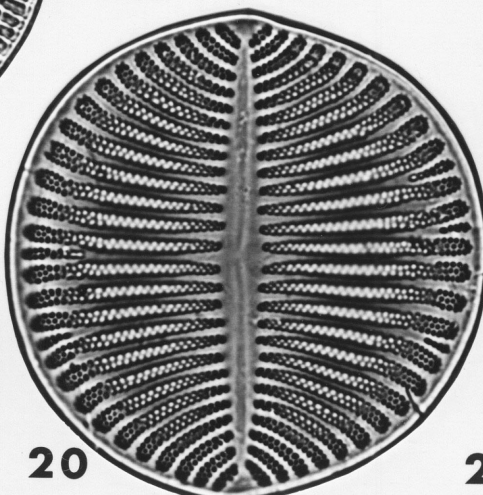
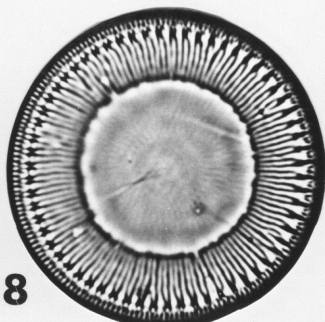
17



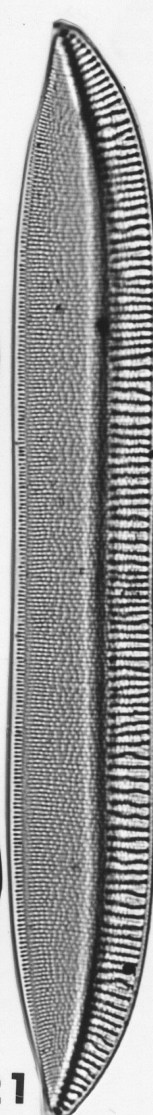
19



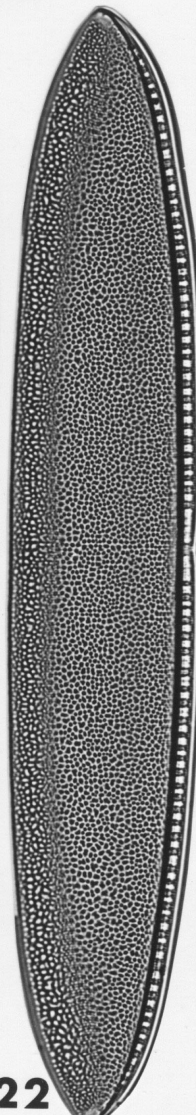
18



20



21



22