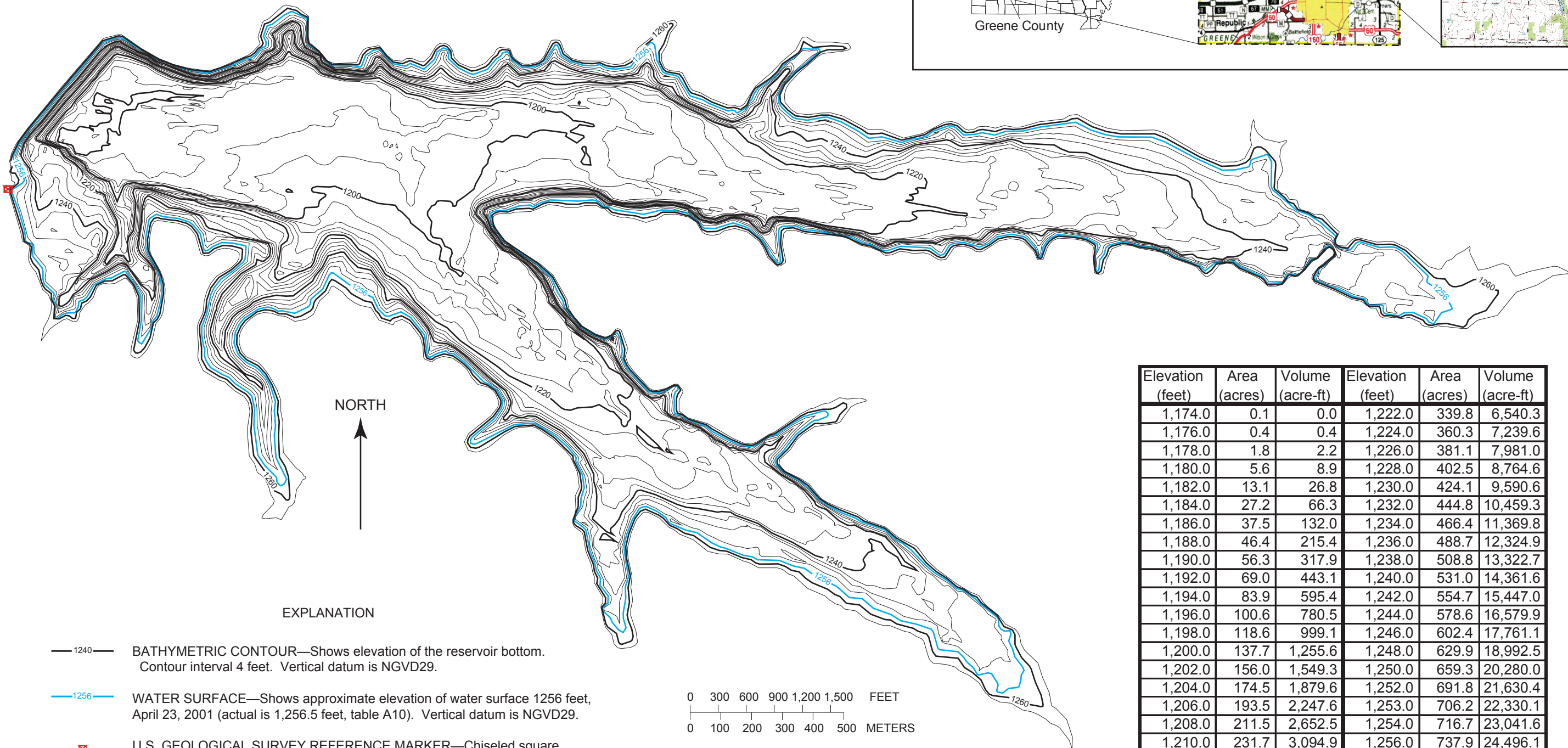
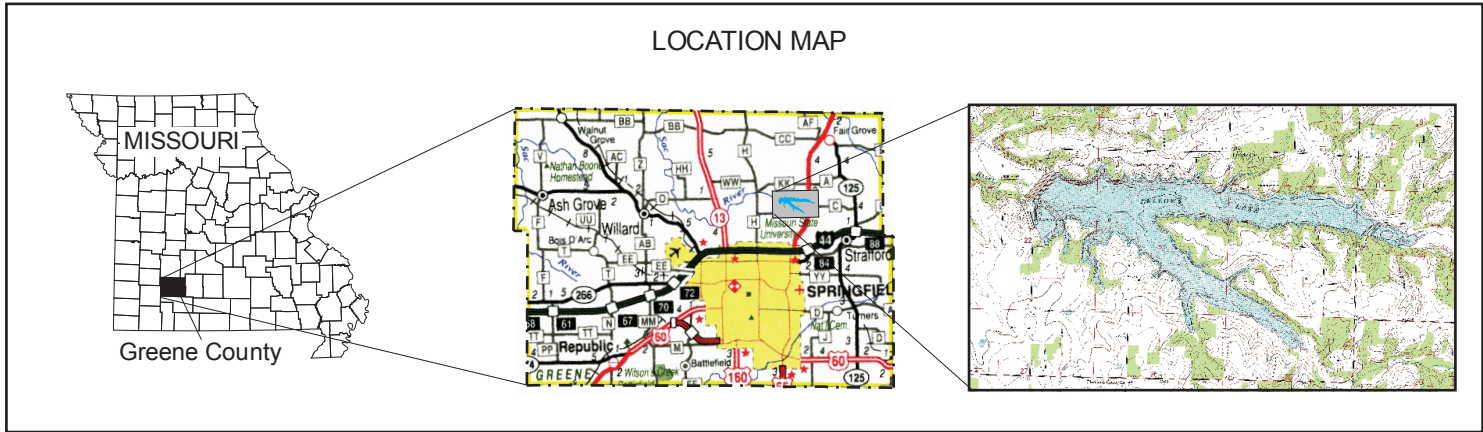
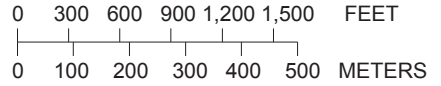


# FELLOWS LAKE



### EXPLANATION

- 1240 BATHYMETRIC CONTOUR—Shows elevation of the reservoir bottom. Contour interval 4 feet. Vertical datum is NGVD29.
- 1256 WATER SURFACE—Shows approximate elevation of water surface 1256 feet, April 23, 2001 (actual is 1,256.5 feet, table A10). Vertical datum is NGVD29.
- U.S. GEOLOGICAL SURVEY REFERENCE MARKER—Chiseled square located on north edge of concrete spillway abutment. Elevation is 1271.8 feet. Vertical datum is NGVD29.



Elevation (feet)	Area (acres)	Volume (acre-ft)	Elevation (feet)	Area (acres)	Volume (acre-ft)
1,174.0	0.1	0.0	1,222.0	339.8	6,540.3
1,176.0	0.4	0.4	1,224.0	360.3	7,239.6
1,178.0	1.8	2.2	1,226.0	381.1	7,981.0
1,180.0	5.6	8.9	1,228.0	402.5	8,764.6
1,182.0	13.1	26.8	1,230.0	424.1	9,590.6
1,184.0	27.2	66.3	1,232.0	444.8	10,459.3
1,186.0	37.5	132.0	1,234.0	466.4	11,369.8
1,188.0	46.4	215.4	1,236.0	488.7	12,324.9
1,190.0	56.3	317.9	1,238.0	508.8	13,322.7
1,192.0	69.0	443.1	1,240.0	531.0	14,361.6
1,194.0	83.9	595.4	1,242.0	554.7	15,447.0
1,196.0	100.6	780.5	1,244.0	578.6	16,579.9
1,198.0	118.6	999.1	1,246.0	602.4	17,761.1
1,200.0	137.7	1,255.6	1,248.0	629.9	18,992.5
1,202.0	156.0	1,549.3	1,250.0	659.3	20,280.0
1,204.0	174.5	1,879.6	1,252.0	691.8	21,630.4
1,206.0	193.5	2,247.6	1,253.0	706.2	22,330.1
1,208.0	211.5	2,652.5	1,254.0	716.7	23,041.6
1,210.0	231.7	3,094.9	1,256.0	737.9	24,496.1
1,212.0	251.1	3,577.6	<b>1,256.5</b>	<b>743.3</b>	<b>24,866.4</b>
1,214.0	270.0	4,098.5	1,258.0	759.5	25,993.5
1,216.0	287.9	4,656.1	1,260.0	787.3	27,534.5
1,218.0	305.5	5,249.9	1,262.0	815.2	29,136.8
1,220.0	322.3	5,877.6	1,264.0	844.1	30,795.6



Figure A10. Bathymetric map and area/volume table for Fellows Lake near Springfield, Missouri.

Table A10. Lake elevations and respective surface areas and volumes. Spillway elevation is approximately 1,264 feet. Vertical datum is National Geodetic Vertical Datum of 1929 (NGVD29).



In cooperation with Missouri Department of Natural Resources