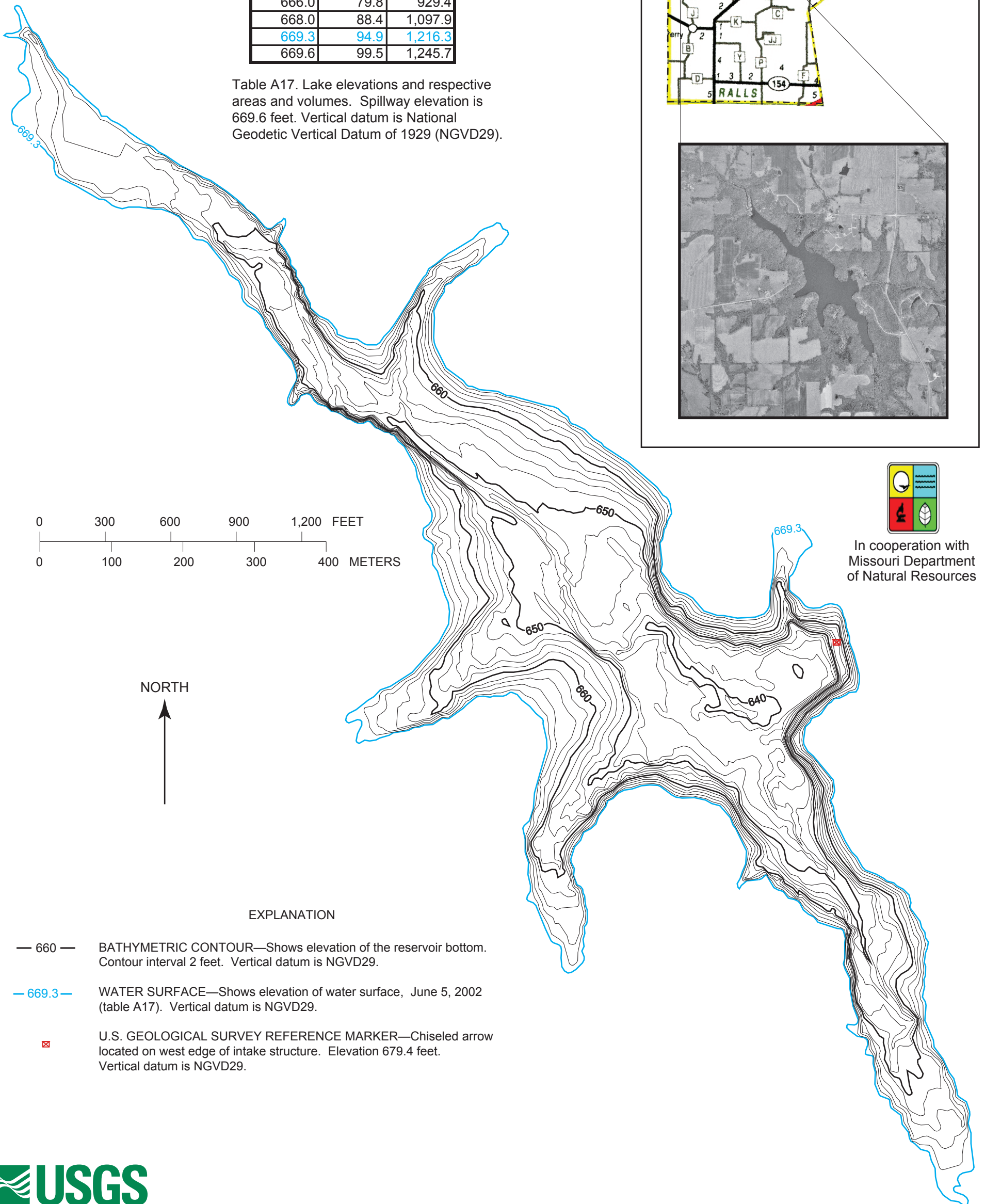
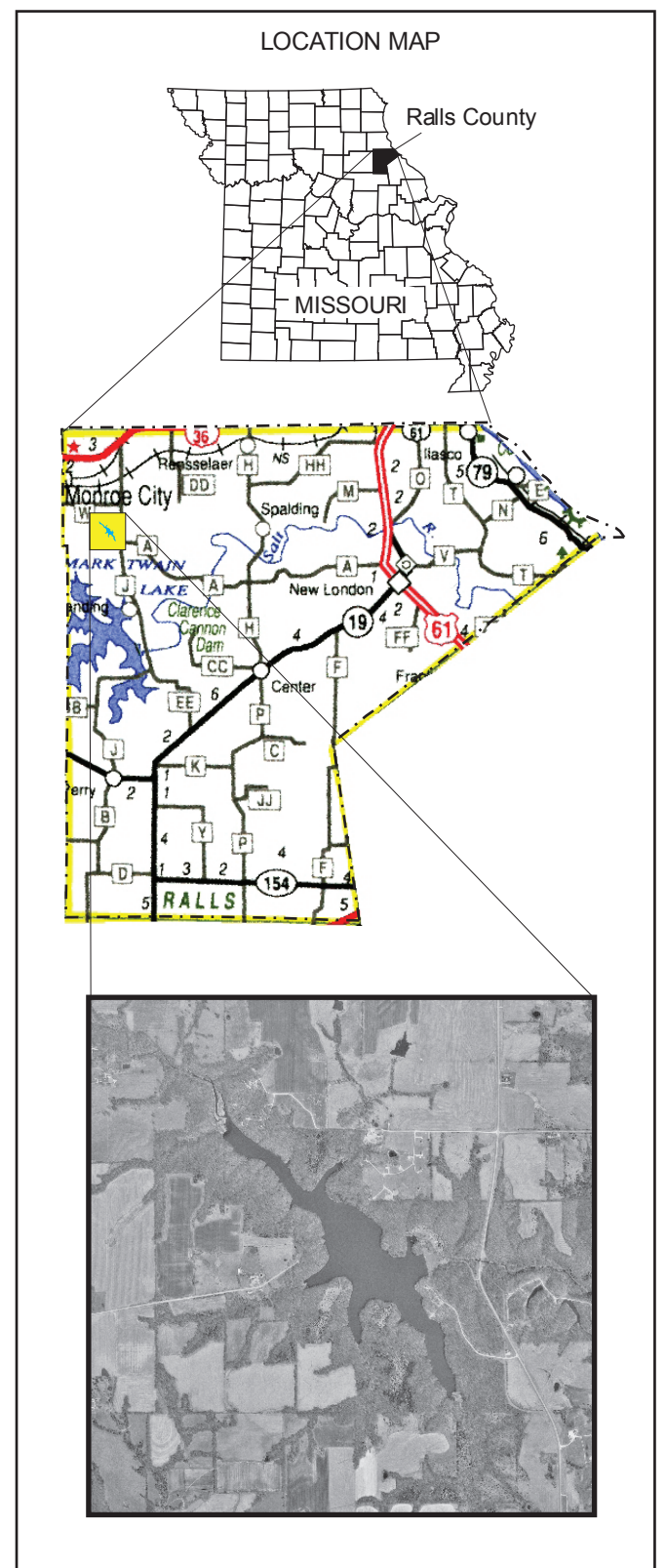


MONROE CITY LAKE

Elevation (feet)	Area (acres)	Volume (acre-ft)
638.0	0.1	0.0
640.0	1.0	1.0
642.0	4.0	5.5
644.0	9.0	18.4
646.0	14.4	41.8
648.0	19.3	75.4
650.0	25.2	119.9
652.0	31.0	175.8
654.0	37.1	243.9
656.0	43.5	324.4
658.0	50.1	418.0
660.0	56.7	524.8
662.0	63.7	645.3
664.0	70.7	779.5
666.0	79.8	929.4
668.0	88.4	1,097.9
669.3	94.9	1,216.3
669.6	99.5	1,245.7

Table A17. Lake elevations and respective areas and volumes. Spillway elevation is 669.6 feet. Vertical datum is National Geodetic Vertical Datum of 1929 (NGVD29).



In cooperation with Missouri Department of Natural Resources

EXPLANATION

- 660 — BATHYMETRIC CONTOUR—Shows elevation of the reservoir bottom. Contour interval 2 feet. Vertical datum is NGVD29.
- 669.3 — WATER SURFACE—Shows elevation of water surface, June 5, 2002 (table A17). Vertical datum is NGVD29.
- ☒ U.S. GEOLOGICAL SURVEY REFERENCE MARKER—Chiseled arrow located on west edge of intake structure. Elevation 679.4 feet. Vertical datum is NGVD29.