

Elevation (feet)	Area (acres)	Volume (acre-ft)
716.0	0.1	0.01
718.0	11.9	8.1
720.0	39.1	55.4
722.0	68.7	163
724.0	93.8	328
726.0	117	539
728.0	141	797
730.0	164	1,100
732.0	188	1,460
734.0	214	1,860
736.0	230	2,300
738.0	245	2,780
740.0	259	3,280
742.0	279	3,820
744.0	297	4,400
746.0	314	5,010
746.8	320	5,250
746.9	332	5,290

Table A31. Lake elevations and respective surface areas and volumes. Approximate elevation of spillway structure is 746.8 feet. Elevations referenced to North American Vertical Datum of 1988 (NAVD88). Note: Volumes calculated from surface testing 0.91 feet vertical accuracy at 95 percent confidence level.

EXPLANATION

- 730— BATHYMETRIC CONTOUR—Shows elevation of the reservoir bottom. Contour interval 2 feet. Contours tested 1.51 feet vertical accuracy at 95 percent confidence level. Vertical datum is NAVD88.
- 746— WATER SURFACE—Shows approximate elevation of water surface, December 15–18, 30–31, 2003 (mean water-surface elevation during survey period was 746.9 feet, table A31). Vertical datum is NAVD88.
- ☒ U.S. GEOLOGICAL SURVEY REFERENCE MARKER—Chiseled arrow located on center of walkway above primary spillway. Elevation 755.1 feet. Vertical datum is NAVD88.

LOCATION MAP

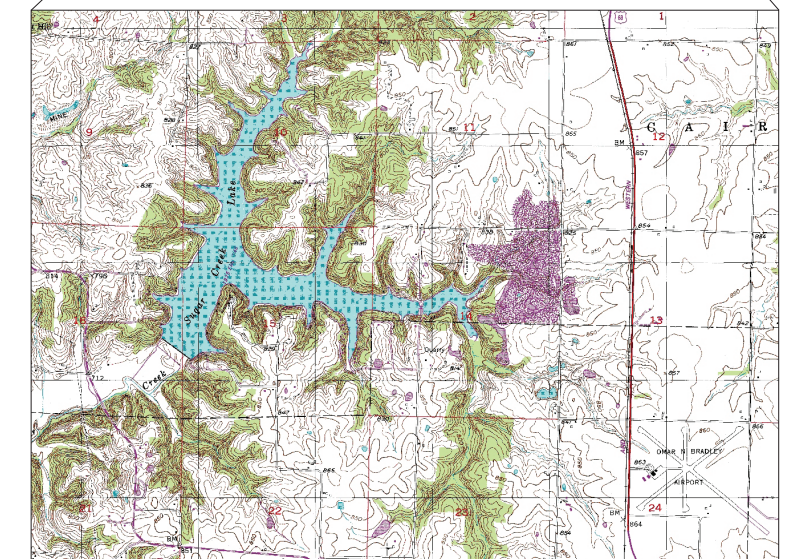
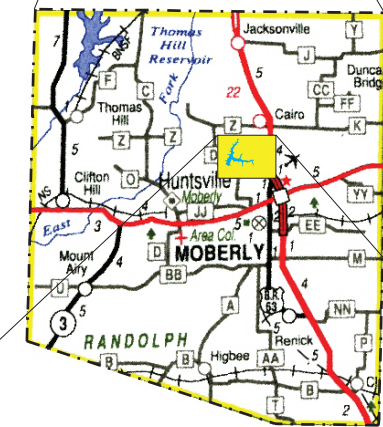


Figure A31. Bathymetric map and area/volume table for Sugar Creek Lake near Moberly, Missouri.