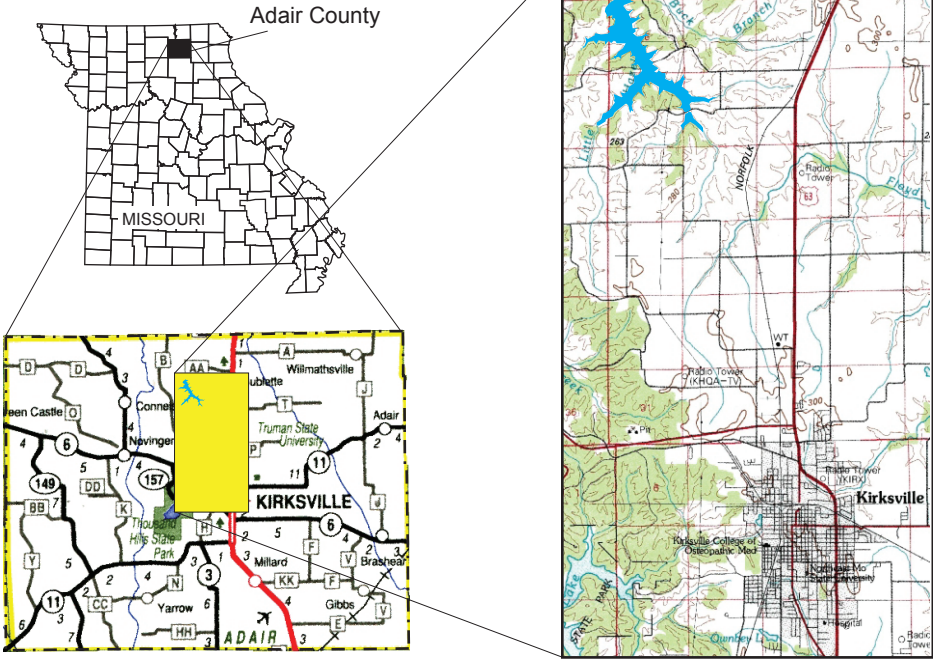


LOCATION MAP



HAZEL CREEK LAKE

Elevation (feet)	Area (acres)	Volume (acre-ft)
800.0	0.2	0.1
802.0	0.9	1.0
804.0	4.3	5.0
806.0	16.1	23.7
808.0	30.1	71.9
810.0	42.0	143
812.0	54.6	240
814.0	69.8	365
816.0	83.2	518
818.0	97.4	698
820.0	114	909
822.0	134	1,160
824.0	154	1,450
826.0	175	1,770
828.0	197	2,150
830.0	220	2,560
832.0	244	3,030
834.0	270	3,540
836.0	295	4,110
838.0	323	4,720
840.0	356	5,400
842.0	388	6,140
844.0	421	6,950
846.0	456	7,830
847.2	481	8,390
847.8	493	8,680

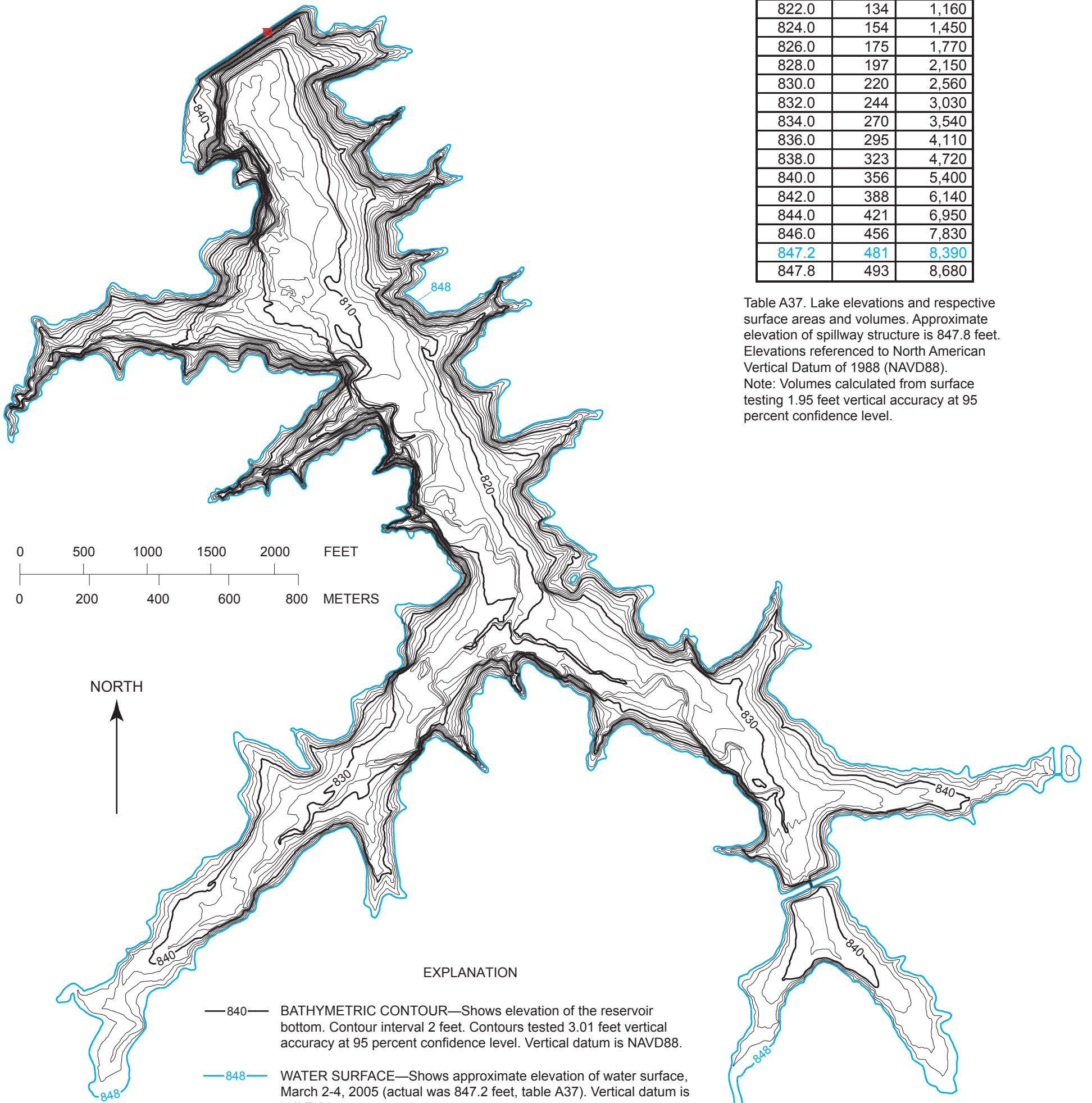


Table A37. Lake elevations and respective surface areas and volumes. Approximate elevation of spillway structure is 847.8 feet. Elevations referenced to North American Vertical Datum of 1988 (NAVD88). Note: Volumes calculated from surface testing 1.95 feet vertical accuracy at 95 percent confidence level.

EXPLANATION

- 840— BATHYMETRIC CONTOUR—Shows elevation of the reservoir bottom. Contour interval 2 feet. Contours tested 3.01 feet vertical accuracy at 95 percent confidence level. Vertical datum is NAVD88.
- 848— WATER SURFACE—Shows approximate elevation of water surface, March 2-4, 2005 (actual was 847.2 feet, table A37). Vertical datum is NAVD88.
- ▣ U.S. GEOLOGICAL SURVEY REFERENCE MARKER—Chiseled arrow located on south side of drop-box spillway structure. Elevation 855.1 feet. Vertical datum is NAVD88.