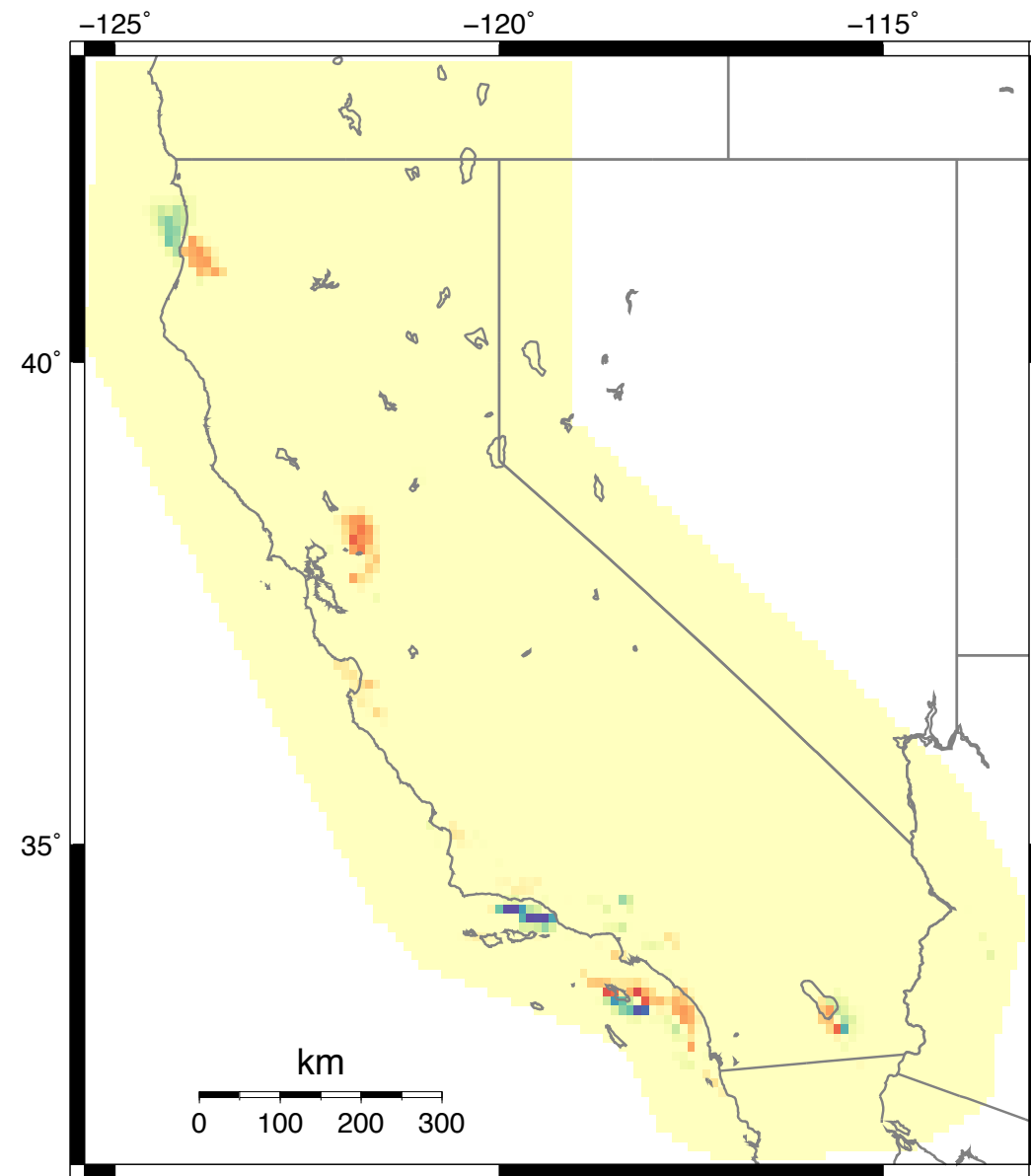
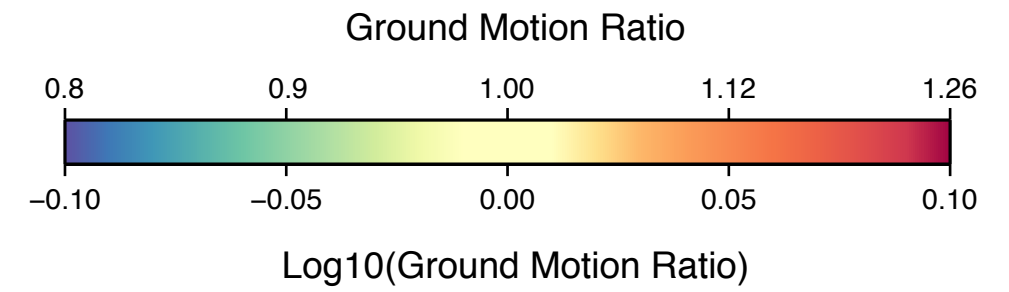
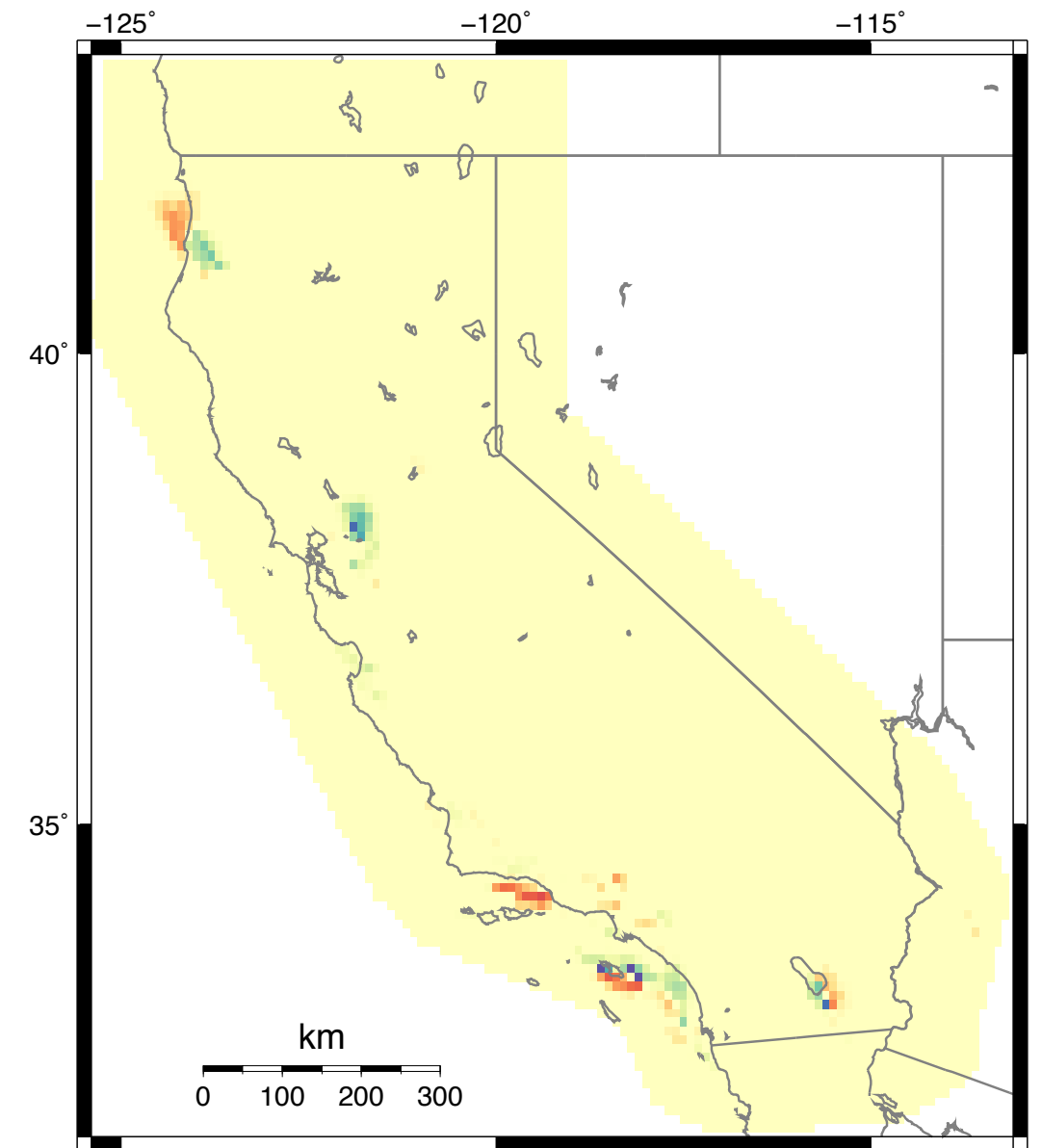


**UCERF3.3  
Fault Model  
Branch Ratio Maps  
(2% in 50 yrs. PGA)**

Maps showing the ratio of ground motion implied by each fault model to the total implied by UCERF3. Ground motion is measured as the peak ground acceleration (PGA) with a 2% probability of being exceeded in 50 yrs. Numbers in blue indicate respective branch weights.



**3.1 (0.5)**



**3.2 (0.5)**