

89°6'W

89°4'W

89°2'W

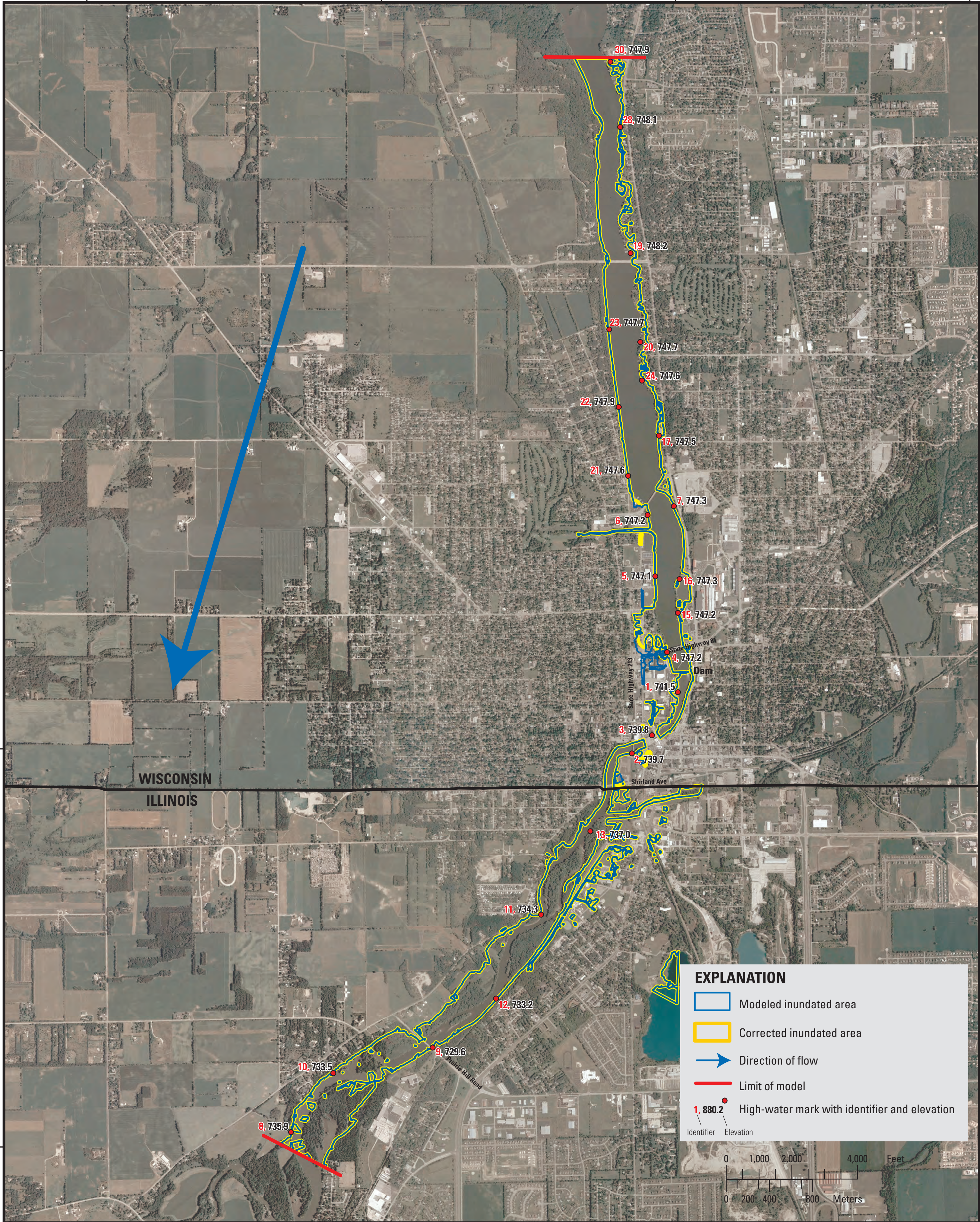
89°0'W

42°32'N

42°30'N

42°28'N

WISCONSIN
ILLINOIS



Base from 2006 National Agricultural Imagery Program (U.S. Department of Agriculture, 2006)

Appendix 9B. Flood-peak inundation map for the Rock River at Beloit, Wisconsin, for flood of June 2008. Elevation is referenced to the North American Vertical Datum of 1988 (NAVD 88).