

7 (200)
T67r
no. 361

~~RESTRICTED
SECURITY INFORMATION~~

~~OFFICIAL USE ONLY~~

Declassified 3/10/69

Stratigraphic Sections of the Phosphoria Formation in Montana, 1949-1950, Part I

By E. R. Cressman, W. H. Wilson, C. W. Tandy, and W. J. Garmoe

article report

1923-

361

~~This material contains information affecting the national defense of the United States within the meaning of the espionage laws, Title 18, U.S.C. Secs. 793 and 794, the transmission or revelation of which in any manner to an unauthorized person is prohibited by law.~~

Trace Elements Investigations Report 361

UNITED STATES DEPARTMENT OF THE INTERIOR
GEOLOGICAL SURVEY

~~OFFICIAL USE ONLY~~

~~RESTRICTED
SECURITY INFORMATION~~

*(200)
T67r
no.361

~~RESTRICTED~~
~~SECURITY INFORMATION~~

Geology and Mineralogy

This document consists of 28 pages.
Series A

UNITED STATES DEPARTMENT OF THE INTERIOR

✓ U.S. GEOLOGICAL SURVEY

STRATIGRAPHIC SECTIONS OF THE PHOSPHORIA FORMATION

IN MONTANA, 1949-1950, PART I*

Classification changed to OFFICIAL USE ONLY
by authority of P. L. Merrit

By *Bernie Phillips* #1/154
by (Signature of person making change and date thereof)

E. R. Cressman, W. H. Wilson,
C. W. Tandy, and W. J. Garmoe

July 1953

Trace Elements Investigations Report 361

This preliminary report is distributed without editorial and technical review for conformity with official standards and nomenclature. It is not for public inspection or quotation.

~~This material contains information affecting the national defense of the United States within the meaning of the espionage laws, Title 18, U.S.C., Secs. 793 and 794, the transmission or revelation of which in any manner to an unauthorized person is prohibited by law.~~

*This report concerns work done partly on behalf of the Division of Raw Materials of the U. S. Atomic Energy Commission.

~~RESTRICTED~~
~~SECURITY INFORMATION~~

USGS - TEI-361

GEOLOGY AND MINERALOGY

| <u>Distribution (Series A)</u> | <u>No. of copies</u> |
|--|----------------------|
| American Cyanamid Company, Winchester. | 1 |
| Argonne National Laboratory. | 1 |
| Atomic Energy Commission, Washington | 1 |
| Battelle Memorial Institute, Columbus. | 1 |
| Carbide and Carbon Chemicals Company, Y-12 Area. | 1 |
| Division of Raw Materials, Butte | 1 |
| Division of Raw Materials, Denver. | 1 |
| Division of Raw Materials, Grants. | 1 |
| Division of Raw Materials, Hot Springs | 1 |
| Division of Raw Materials, New York. | 6 |
| Division of Raw Materials, Richfield | 1 |
| Division of Raw Materials, Salt Lake City. | 1 |
| Division of Raw Materials, Washington. | 3 |
| Dow Chemical Company, Pittsburg. | 1 |
| Exploration Division, Grand Junction Operations Office | 1 |
| Grand Junction Operations Office | 1 |
| Technical Information Service, Oak Ridge | 6 |
| Tennessee Valley Authority, Wilson Dam | 1 |
| U. S. Geological Survey: | |
| Alaskan Geology Branch, Washington | 1 |
| Fuels Branch, Washington | 1 |
| Geochemistry and Petrology Branch, Washington. | 1 |
| Geophysics Branch, Washington. | 1 |
| Mineral Deposits Branch, Washington. | 2 |
| E. H. Bailey, San Francisco. | 1 |
| N. M. Denson, Denver | 1 |
| C. E. Dutton, Madison. | 1 |
| R. P. Fischer, Grand Junction. | 1 |
| R. G. Petersen, Plant City. | 1 |
| M. R. Klepper, Washington. | 1 |
| A. H. Koschmann, Denver. | 1 |
| R. A. Laurence, Knoxville. | 1 |
| D. M. Lemmon, Washington | 1 |
| K. L. Buck, Denver | 2 |
| R. J. Roberts, Salt Lake City. | 1 |
| R. W. Swanson, Spokane | 2 |
| A. E. Weissenborn, Spokane | 2 |
| TEPCO, Washington: | |
| Resource Compilation Section | 2 |
| Reports Processing Section | 2 |
| (Including master) | |

CONTENTS

| | Lot no. | Page |
|---|-----------|------|
| Introduction. | | 4 |
| Acknowledgments. | | 6 |
| Stratigraphy of the Phosphoria formation in Montana | | 7 |
| Stratigraphic sections. | | 9 |
| Literature cited. | | 9 |
| Tables of stratigraphic sections, Montana | | |
| Hogback Mountain | 1299 | 10 |
| West Fork of Blacktail Creek | 1302 | 15 |
| West Fork of Madison River | 1318 | 18 |
| Little Water Canyon. | 1341 | 19 |
| Little Sheep Creek | 1294-1295 | 21 |
| Crooked Creek. | 1296-1297 | 25 |
| Camp Frigid. | 1343 | 28 |

ILLUSTRATIONS

| | |
|--|---|
| Figure 1. Outcrops of the Phosphoria formation in Montana and localities sampled | 5 |
| 2. Generalized section of the Phosphoria formation at Sheep Creek, Montana, lot no. 1234. | 8 |

STRATIGRAPHIC SECTIONS OF THE PHOSPHORIA FORMATION IN MONTANA, 1949-1950

PART I

by E. R. Cressman, W. H. Wilson, C. W. Tandy, and W. J. Garmoe

INTRODUCTION

The U. S. Geological Survey has recently measured and sampled the Phosphoria formation at many localities in Montana and other western states. These data will not be fully synthesized and analyzed for several years, but segments of the data, accompanied by little or no interpretation, are published as preliminary reports as they are assembled. This report, which contains abstracts of many of the sections in southwestern Montana (fig. 1), is one of this series and is the third Montana report; it includes about half of the data gathered in Montana during 1949 and 1950. The field and laboratory procedures adopted in these investigations are described rather fully in a previous report (McKelvey and others, 1953).

Many people have taken part in this investigation. The program which this work is a part was organized by V. E. McKelvey and the field program was supervised by R. W. Swanson, T. M. Cheney, J. L. Elliott, F. D. Frieske, R. F. Gosman, R. S. Jones, B. K. Replogle, and R. G. Waring participated in the description of strata and the collection of samples referred to in this report. Crushing and splitting of the samples in the field was done by T. K. Rigby. The laboratory preparation of samples for chemical analysis was done in Denver Colo., under the direction of W. P. Huleatt.

The P_2O_5 and acid insoluble analyses were made for the Survey by the U. S. Bureau of Mines at the Northwest Electrodevelopment Laboratory, Albany,

Oreg., under the direction of S. M. Shelton and M. L. Wright. The Al_2O_3 , Fe_2O_3 , and loss-on-ignition analyses were made in the Trace Elements Section laboratory of the Survey in Washington, D. C., under the direction of J. C. Rabbitt by chemists H. Alberty, T. Farley, C. Hoy, and M. Landers. The radioactivity analyses were made in this laboratory by F. J. Flanagan and J. J. Warr, Jr., and in the Trace Elements Section laboratory in Denver, Colo., under the direction of L. F. Rader, by J. N. Rosholt. The chemical uranium analyses were made in the Washington laboratory by A. B. Caemmerer and A. L. White and in the Denver laboratory by G. T. Burrow and W. Mountjoy.

Compilation of the data has been by K. S. Bergman under the supervision of R. W. Swanson. Organization of the tabular data has been largely by Anita Wise.

Acknowledgments

Special thanks are due A. E. Weissenborn and M. R. Klepper, who gave much advice and help in carrying out the field program. The cost of the field and laboratory investigations has been borne partly by the Missouri River Basin Division of the Bureau of Reclamation and the Division of Raw Materials of the Atomic Energy Commission.

It is a pleasure to acknowledge the fine cooperation extended to the field parties by the local residents and property owners, who furnished information and services and gave access to property.

STRATIGRAPHY OF THE PHOSPHORIA FORMATION IN MONTANA

The Phosphoria formation in southwestern Montana consists in general of five members, two phosphatic shale members and three hard members (fig. 2). The lower two hard members are dominated by limestone and the top hard member by chert and sandstone or quartzite. Most of the members can be identified over a large part of the area of outcrop, though member correlation toward the east and northeast is much more difficult. The formation ranges in thickness from less than 100 feet to more than 800 feet.

The lowermost or A member is best developed toward the west and southwest and consists of limestone or dolomite, sandstone, mudstone, and chert with a maximum thickness of nearly 350 feet. It overlies the Quadrant formation of Pennsylvanian age and is probably equivalent to the upper member of the Wells formation of southeastern Idaho and adjacent Wyoming and Utah (McKelvey, 1949).

The lower phosphatic shale or B member is about 50 feet thick near the southwest corner of the state but thins markedly to the north and east where in some areas it cannot be recognized.

The middle or C member consists of as much as 200 feet of limestone and/or chert and sandstone. The upper phosphatic shale or D member is rather similar to and much more uniform and widespread than the B member, though minable phosphate is present only toward the north end of the field where the full thickness of the phosphatic zone may consist of a single 3- to 5-foot bed of high-grade phosphate rock.

The uppermost or E member is the most widespread and uniform, averaging about 100 feet in thickness and consisting chiefly of siliceous rocks-- siltstone, chert, and quartzitic sandstone. It is overlain by the Dinwoody

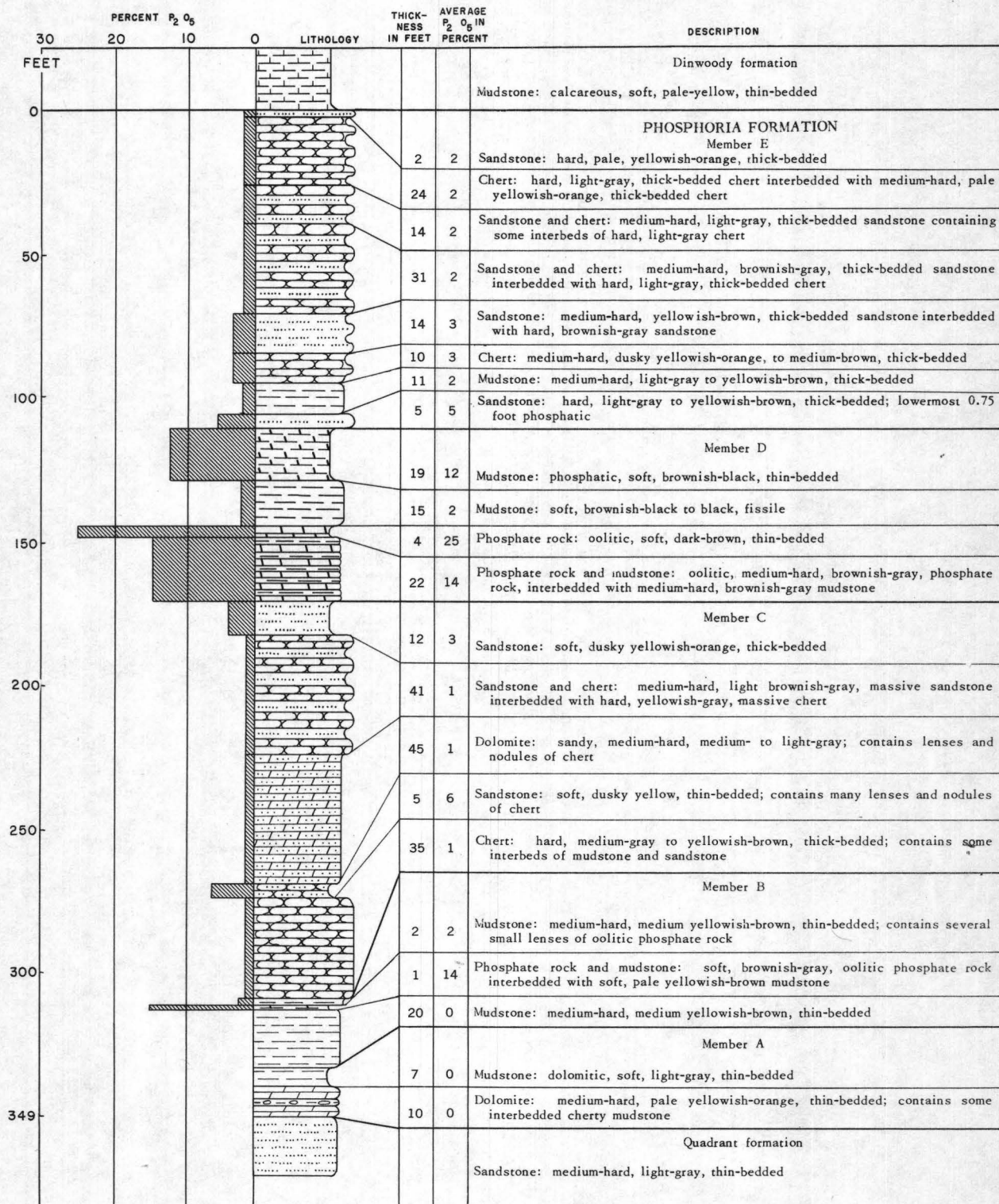


Figure 2. -- Generalized section of Phosphoria formation at Sheep Creek, Montana (lot no. 1234)

formation of Triassic age in the greater part of the area and by the Ellis group of Jurassic age toward the north and northeast.

STRATIGRAPHIC SECTIONS

Analytical data and abstracts of stratigraphic sections measured at seven localities follow. Their locations as well as the locations of other sections previously reported (Swanson and others, 1953, Klepper and others, 1953) and sections to be reported later are shown in figure 1.

LITERATURE CITED

- Clabaugh, P. S., 1946, Permian phosphate deposits of Montana, Idaho, Wyoming and Utah: U. S. Geol. Survey, Strategic Minerals Inv. Prelim. Map 3-198.
- Klepper, M. R., Honkala, F. S., Payne, O. A., and Ruppel, E. T., 1953, Stratigraphic sections of the Phosphoria formation in Montana, 1948: U. S. Geol. Survey Circ. 260.
- McKelvey, V. E., 1949, Geological studies of the western phosphate field: Am. Inst. Min. Met. Eng. Mining Trans., v. 184, p. 270-279.
- McKelvey, V. E., Davidson, D. F., O'Malley, F. W., and Smith, L. E., 1953, Stratigraphic sections of the Phosphoria formation in Idaho, 1947-48, Part I: U. S. Geol. Survey Circ. 208.
- Swanson, R. W., Lowell, W. R., Cressman, E. R., and Bostwick, D. A., 1953, Stratigraphic sections of the Phosphoria formation in Montana, 1947-48: U. S. Geol. Survey Circ. 209.

Hogback Mountain, Mont., lot 1299

Phosphoria formation sampled on Hogback Mountain, S $\frac{1}{2}$ NW $\frac{1}{4}$ sec. 8, T. 11 S., R. 4 W., Madison County, Mont., on overturned west limb of Ruby Valley syncline. A, C, and E members measured from natural exposure, and B and D members measured and sampled in hand trenches on east scarp of mountain. Beds strike N. 40° E. and dip 50° W. Section measured by W. H. Wilson, R. S. Jones, W. J. Garmoe, and B. K. Replogle and sampled by Replogle, J. L. Elliott, and R. F. Gosman in August 1949. Samples analyzed by U. S. Bureau of Mines laboratory, Albany, Oreg.

Samples analyzed for eU and chem. U by the U. S. Geological Survey laboratory, Geochemistry and Petrology Branch.

| Bed no. | Rock description | Sample no. | Thickness (feet) | Chemical analyses (percent) | | Cumulative thickness (feet) | Thickness x percent P ₂ O ₅ (cumulative) | Uranium content (percent) | | Thickness x percent eU (cumulative) |
|----------------------------------|--|------------|------------------|-------------------------------|----------------|-----------------------------|--|---------------------------|---------|-------------------------------------|
| | | | | P ₂ O ₅ | Acid insoluble | | | eU | Chem. U | |
| E member of Phosphoria formation | | | | | | | | | | |
| | Overlying beds covered. Top of E-27 may be Dinwoody contact. | | | | | | | | | |
| E-27 | Mudstone, carbonatic; fos. col. no. 11680 ¹ | -- | 7.3 | -- | -- | 7.3 | -- | -- | -- | -- |
| E-26 | Sandstone, carbonatic, contains glauconite | -- | .8 | -- | -- | 8.1 | -- | -- | -- | -- |
| E-25 | Sandstone, carbonatic, contains glauconite | -- | 2.9 | -- | -- | 11.0 | -- | -- | -- | -- |
| E-24 | Mudstone, carbonatic and dolomite, contains glauconite | -- | 1.5 | -- | -- | 12.5 | -- | -- | -- | -- |
| E-23 | Sandstone, carbonatic | -- | 1.6 | -- | -- | 14.1 | -- | -- | -- | -- |
| E-22 | Sandstone and carbonatic quartzite, contains glauconite | -- | 1.5 | -- | -- | 15.6 | -- | -- | -- | -- |
| E-21 | Sandstone, carbonatic, contains glauconite | -- | .5 | -- | -- | 16.1 | -- | -- | -- | -- |
| E-20 | Mudstone, cherty, carbonatic | -- | 1.9 | -- | -- | 18.0 | -- | -- | -- | -- |
| E-19 | Sandstone, contains glauconite | -- | .5 | -- | -- | 18.5 | -- | -- | -- | -- |
| E-18 | Chert | -- | 3.4 | -- | -- | 21.9 | -- | -- | -- | -- |
| E-17 | Sandstone, carbonatic, contains glauconite | -- | 5.9 | -- | -- | 27.8 | -- | -- | -- | -- |
| E-16 | Sandstone, contains glauconite | -- | 17.0 | -- | -- | 44.8 | -- | -- | -- | -- |
| E-15 | Sandstone, carbonatic | -- | 3.3 | -- | -- | 48.1 | -- | -- | -- | -- |
| E-14 | Sandstone, carbonatic; fos. col. no. 11679 | -- | 7.5 | -- | -- | 55.6 | -- | -- | -- | -- |
| E-13 | Sandstone | -- | 1.3 | -- | -- | 56.9 | -- | -- | -- | -- |
| E-12 | Sandstone | -- | 3.6 | -- | -- | 60.5 | -- | -- | -- | -- |
| E-11 | Sandstone | -- | 3.6 | -- | -- | 64.1 | -- | -- | -- | -- |
| E-10 | Sandstone | -- | 11.9 | -- | -- | 76.0 | -- | -- | -- | -- |
| E-9 | Sandstone | -- | 10.7 | -- | -- | 86.7 | -- | -- | -- | -- |
| E-8 | Sandstone, carbonatic, cherty | -- | 13.3 | -- | -- | 100.0 | -- | -- | -- | -- |
| E-7 | Sandstone, carbonatic | -- | 2.1 | -- | -- | 102.1 | -- | -- | -- | -- |
| E-6 | Sandstone, carbonatic | -- | 3.8 | -- | -- | 105.9 | -- | -- | -- | -- |

¹ Fossil collection made by W. R. Record, Paleontology and Stratigraphy Branch, U. S. Geological Survey.

Hogback Mountain—Continued

| Bed no. | Rock description | Sample no. | Thickness (feet) | Chemical analyses (percent) | | Cumulative thickness (feet) | Thickness x percent P ₂ O ₅ (cumulative) | Uranium content (percent) | | Thickness x percent eU (cumulative) |
|----------------------------------|--|------------|------------------|-------------------------------|----------------|-----------------------------|--|---------------------------|---------|-------------------------------------|
| | | | | P ₂ O ₅ | Acid insoluble | | | eU | Chem. U | |
| E- 5 | Sandstone, carbonatic ----- | -- | 2.8 | -- | -- | 108.7 | -- | -- | -- | -- |
| E- 4 | Sandstone, carbonatic ----- | -- | 4.4 | -- | -- | 103.1 | -- | -- | -- | -- |
| E- 3 | Sandstone ----- | -- | 4.8 | -- | -- | 117.9 | -- | -- | -- | -- |
| E- 2 | Chert ----- | -- | .8 | -- | -- | 118.7 | -- | -- | -- | -- |
| E- 1 | Sandstone; fos. col. no. 11678 ----- | -- | 3.6 | -- | -- | 122.3 | -- | -- | -- | -- |
| D member of Phosphoria formation | | | | | | | | | | |
| D-53 | Phosphate rock, argillaceous ----- | 3553- RSJ | 1.0 | 26.7 | 22.9 | 1.0 | 26.70 | 0.009 | 0.006 | 0.009 |
| D-52 | Phosphate rock ----- | 3552- RSJ | 1.0 | 31.2 | 14.7 | 2.0 | 57.90 | .007 | .010 | .016 |
| D-51 | Phosphate rock and mudstone ----- | 3551- WJG | 1.2 | 13.6 | 42.0 | 3.2 | 74.22 | .004 | .005 | .021 |
| D-50 | Mudstone, phosphatic ----- | 3550- WJG | 4.7 | 13.7 | 42.5 | 7.9 | 138.61 | .006 | .006 | .049 |
| D-49 | Mudstone and carbonatic mudstone ----- | 3549- WJG | 3.8 | 6.95 | 41.9 | 11.7 | 165.02 | .003 | .003 | .060 |
| D-48 | Mudstone, phosphatic ----- | 3548- WJG | .7 | 8.9 | 52.3 | 12.4 | 171.25 | .004 | .002 | .063 |
| D-47 | Mudstone ----- | 3547- WJG | .9 | 5.7 | 63.9 | 13.3 | 176.38 | .004 | .004 | .067 |
| D-46 | Mudstone, phosphatic ----- | 3546- WJG | .9 | 16.8 | 43.3 | 14.2 | 191.50 | .006 | .005 | .072 |
| D-45 | Mudstone and phosphatic mudstone ----- | 3545- WJG | .8 | 8.3 | 54.7 | 15.0 | 198.14 | .005 | .007 | .076 |
| D-44 | Mudstone ----- | 3544- WJG | 1.6 | 3.7 | 62.4 | 16.6 | 204.06 | .002 | .002 | .079 |
| D-43 | Mudstone, phosphatic ----- | 3543- WJG | 1.4 | 11.3 | 49.8 | 18.0 | 219.88 | .005 | .007 | .086 |
| D-42 | Mudstone, phosphatic ----- | 3542- WJG | 1.3 | 8.8 | 63.1 | 19.3 | 231.32 | .004 | .005 | .092 |
| D-41 | Mudstone, phosphatic ----- | 3541- WJG | 2.4 | 11.6 | 57.6 | 21.7 | 259.16 | .004 | .005 | .101 |
| D-40 | Mudstone, phosphatic ----- | 3540- WJG | .8 | 14.2 | 53.0 | 22.5 | 270.52 | .005 | .005 | .105 |
| D-39 | Mudstone, carbonatic ----- | 3539- WJG | 1.5 | 1.8 | 55.5 | 24.0 | 273.22 | .000 | .001 | .105 |
| D-38 | Mudstone, phosphatic ----- | 3538- WJG | 1.6 | 12.7 | 57.3 | 25.6 | 293.54 | .003 | .004 | .110 |
| D-37 | Mudstone, phosphatic, carbonatic ----- | 3537- WJG | 1.1 | 8.1 | 66.7 | 26.7 | 303.45 | .003 | .004 | .113 |
| D-36 | Chert, carbonatic, and carbonatic mudstone ----- | 3536- WJG | 1.7 | 4.3 | 55.3 | 28.4 | 309.76 | .002 | .003 | .117 |
| D-35 | Chert ----- | 3535- WJG | 2.0 | 2.7 | 87.2 | 30.4 | 315.16 | .001 | .002 | .119 |
| D-34 | Mudstone ----- | 3534- WJG | 1.1 | 6.1 | 71.7 | 31.5 | 321.87 | .004 | .004 | .123 |
| D-33 | Chert ----- | 3533- WJG | .8 | 1.7 | 88.1 | 32.3 | 323.23 | .002 | .002 | .125 |
| D-32 | Chert ----- | 3532- WJG | 2.6 | 1.1 | 92.8 | 34.9 | 326.09 | .000 | .002 | .125 |
| D-31 | Mudstone ----- | 3531- WJG | 2.3 | 1.7 | 88.9 | 37.2 | 330.00 | .002 | .003 | .129 |
| D-30 | Mudstone ----- | 3530- WJG | 2.3 | 2.8 | 85.7 | 39.5 | 336.44 | .002 | .002 | .134 |
| D-29 | Mudstone ----- | 3529- WJG | 2.6 | 3.4 | 81.4 | 42.1 | 345.28 | .002 | .002 | .139 |
| D-28 | Mudstone, phosphatic ----- | 3528- WJG | 1.0 | 11.2 | 54.1 | 43.1 | 356.48 | .005 | .007 | .144 |
| D-27 | Mudstone, carbonatic ----- | 3527- WJG | 1.7 | 5.7 | 35.4 | 44.8 | 366.17 | .003 | .003 | .149 |
| D-26 | Mudstone, phosphatic ----- | 3526- WJG | 3.0 | 15.6 | 43.7 | 47.8 | 412.97 | .007 | .008 | .170 |
| D-25 | Mudstone, phosphatic ----- | 3525- WJG | .8 | 12.0 | 44.4 | 48.6 | 422.57 | .006 | .006 | .175 |
| D-24 | Mudstone, phosphatic ----- | 3524- WJG | 1.3 | 12.3 | 37.5 | 49.9 | 438.56 | .006 | .006 | .183 |

OFFICIAL USE ONLY

OFFICIAL USE ONLY

ORIGINAL USE ONLY

ORIGINAL USE ONLY

| | | | | | | | | | | |
|------|--|----------|-----|------|------|------|--------|------|------|------|
| D-23 | Mudstone, phosphatic ----- | 3523-WJG | 1.2 | 11.0 | 47.1 | 51.1 | 451.76 | .006 | .007 | .190 |
| D-22 | Mudstone and argillaceous phosphate rock --- | 3522-WJG | 1.2 | 11.9 | 43.4 | 52.3 | 466.04 | .005 | .007 | .196 |
| D-21 | Mudstone, carbonatic ----- | 3521-WJG | 2.5 | 6.3 | 51.3 | 54.8 | 481.79 | .006 | .006 | .211 |
| D-20 | Mudstone ----- | 3520-WJG | .8 | 2.3 | 71.0 | 55.6 | 483.63 | .004 | .002 | .214 |
| D-19 | Mudstone and argillaceous phosphate rock --- | 3519-WJG | 2.5 | 13.1 | 48.7 | 58.1 | 516.38 | .006 | .006 | .229 |
| D-18 | Phosphate rock ----- | 3518-WJG | .9 | 34.5 | 4.5 | 59.0 | 547.43 | .011 | .013 | .239 |
| D-17 | Mudstone, phosphatic ----- | 3517-WJG | 3.0 | 8.1 | 55.7 | 62.0 | 571.73 | .005 | .004 | .254 |
| D-16 | Mudstone, phosphatic, carbonatic ----- | 3516-WJG | 2.0 | 10.7 | 37.3 | 64.0 | 593.13 | .006 | .007 | .266 |
| D-15 | Phosphate rock ----- | 3515-WJG | 1.0 | 29.3 | 10.7 | 65.0 | 622.43 | .013 | .015 | .279 |
| D-14 | Phosphate rock, argillaceous ----- | 3514-WJG | 1.7 | 17.3 | 32.7 | 66.7 | 651.84 | .008 | .011 | .293 |
| D-13 | Mudstone, phosphatic ----- | 3513-WJG | 1.9 | 13.9 | 33.3 | 68.6 | 678.25 | .009 | .011 | .310 |
| D-12 | Mudstone ----- | 3512-WJG | 2.0 | 5.3 | 59.0 | 70.6 | 688.85 | .004 | .005 | .318 |
| D-11 | Mudstone, carbonatic ----- | 3511-WJG | .8 | 5.7 | 37.5 | 71.4 | 693.41 | .005 | .006 | .322 |
| D-10 | Mudstone, phosphatic, carbonatic ----- | 3510-WJG | .7 | 9.7 | 43.3 | 72.1 | 700.20 | .007 | .008 | .327 |
| D-9 | Phosphate rock, argillaceous ----- | 3509-WJG | 1.7 | 16.6 | 30.7 | 73.8 | 728.42 | .009 | .008 | .342 |
| D-8 | Phosphate rock ----- | 3508-WJG | .8 | 32.1 | 5.2 | 74.6 | 754.10 | .008 | .010 | .348 |
| D-7 | Mudstone, phosphatic, and mudstone ----- | 3507-WJG | 1.6 | 10.1 | 57.5 | 76.2 | 770.58 | .003 | .003 | .353 |
| D-6 | Phosphate rock, argillaceous ----- | 3506-WJG | .8 | 29.7 | 18.5 | 77.0 | 793.34 | .008 | .010 | .360 |
| D-5 | Mudstone, phosphatic, carbonatic ----- | 3505-WJG | .5 | 12.3 | 32.7 | 77.5 | 800.49 | .003 | .004 | .361 |
| D-4 | Mudstone ----- | 3504-WJG | 1.5 | 6.0 | 64.5 | 79.0 | 809.49 | .004 | .003 | .367 |
| D-3 | Mudstone, phosphatic ----- | 3503-WJG | 1.2 | 9.8 | 46.2 | 80.2 | 821.25 | .006 | .006 | .374 |
| D-2 | Mudstone and phosphate rock ----- | 3502-WJG | .4 | 22.8 | 23.6 | 80.6 | 830.37 | .009 | .010 | .378 |
| D-1 | Mudstone ----- | 3501-WJG | .7 | 3.1 | 80.5 | 81.3 | 832.54 | .003 | .002 | .380 |

C member of Phosphoria formation

| | | | | | | | | | | |
|------|--------------------------------------|----------|------|-----|------|-------|----|-------|----|----|
| C-11 | Chert and sandstone ----- | -- | 2.8 | -- | -- | 2.8 | -- | -- | -- | -- |
| C-10 | Sandstone and quartzite ----- | -- | 18.2 | -- | -- | 21.0 | -- | -- | -- | -- |
| C-9 | Limestone ----- | -- | 10.1 | -- | -- | 31.1 | -- | -- | -- | -- |
| C-8 | Siltstone, calcareous ----- | -- | 8.5 | -- | -- | 39.6 | -- | -- | -- | -- |
| C-7 | Limestone, silty, dolomitic ----- | -- | 24.0 | -- | -- | 63.6 | -- | -- | -- | -- |
| C-6 | Limestone ----- | -- | 22.5 | -- | -- | 86.1 | -- | -- | -- | -- |
| C-5 | Limestone; fos. col. no. 11677 ----- | -- | 46.0 | -- | -- | 132.1 | -- | -- | -- | -- |
| C-4 | Sandstone and carbonate rock ----- | -- | 20.0 | -- | -- | 152.1 | -- | -- | -- | -- |
| C-3 | Chert and carbonate rock ----- | -- | 23.5 | -- | -- | 175.6 | -- | -- | -- | -- |
| C-2 | Chert ----- | -- | 30.2 | -- | -- | 205.8 | -- | -- | -- | -- |
| C-1 | Chert, carbonatic ----- | 3374-WHW | 2.8 | 0.4 | 64.0 | 208.6 | -- | 0.002 | -- | -- |

B member of Phosphoria formation

| | | | | | | | | | | |
|-----|---|----------|-----|------|------|-----|--------|-------|-------|-------|
| B-4 | Sandstone phosphatic and mudstone ----- | 3373-WHW | 3.0 | 6.0 | 67.7 | 3.0 | 18.00 | 0.003 | -- | 0.009 |
| B-3 | Mudstone, phosphatic ----- | 3372-WHW | 2.1 | 8.8 | 66.5 | 5.1 | 36.48 | .005 | 0.004 | .220 |
| B-2 | Phosphate rock ----- | 3371-WHW | 4.0 | 28.8 | 16.0 | 9.1 | 151.68 | .013 | .013 | .072 |

Hogback Mountain—Continued

| Bed no. | Rock description | Sample no. | Thickness (feet) | Chemical analyses (percent) | | Cumulative thickness (feet) | Thickness x percent P ₂ O ₅ (cumulative) | Uranium content (percent) | | Thickness x percent eU (cumulative) |
|----------------------------------|--|------------|------------------|-------------------------------|----------------|-----------------------------|--|---------------------------|---------|-------------------------------------|
| | | | | P ₂ O ₅ | Acid insoluble | | | eU | Chem. U | |
| B- 1 | Sandstone and phosphate rock; fos. col. no. 11676----- | 3370-WHW | 1.8 | 19.3 | 43.2 | 10.9 | 186.42 | 0.006 | 0.006 | 0.082 |
| -- | Phosphate rock, argillaceous----- | 3370b-WHW | (.7) | 23.4 | 34.1 | -- | -- | .006 | .006 | -- |
| -- | Sandstone----- | 3370a-WHW | (1.1) | 0.8 | 91.8 | -- | -- | .000 | .001 | -- |
| 3370-WHW resampled as two units. | | | | | | | | | | |
| A member of Phosphoria formation | | | | | | | | | | |
| A-45 | Carbonate rock----- | 3369-WHW | 3.5 | 0.5 | 11.5 | 3.5 | 1.75 | 0.001 | -- | 0.004 |
| A-44 | Carbonate rock, argillaceous, silty----- | 3368-WHW | 3.4 | .9 | 28.0 | 6.9 | 4.81 | .001 | -- | .007 |
| A-43 | Mudstone----- | 3367-WHW | 7.5 | .2 | 70.3 | 14.4 | 6.31 | .002 | -- | .022 |
| A-42 | Mudstone----- | 3366-WHW | 6.2 | .2 | 68.2 | 20.6 | 7.55 | .001 | -- | .028 |
| A-41 | Sandstone and mudstone----- | 3365-WHW | 6.0 | .1 | 71.8 | 26.6 | 8.15 | .001 | -- | .034 |
| A-40 | Mudstone----- | 3364-WHW | 5.4 | .2 | 71.2 | 32.0 | 9.23 | .002 | -- | .045 |
| A-39 | Mudstone, carbonatic----- | 3363-WHW | 5.5 | .2 | 67.8 | 37.5 | 10.33 | .002 | -- | .056 |
| A-38 | Mudstone, carbonatic----- | 3362-WHW | 6.0 | .2 | 63.7 | 43.5 | 11.53 | .002 | -- | .068 |
| A-37 | Mudstone, carbonatic----- | 3361-WHW | 4.8 | .1 | 64.6 | 48.3 | 12.01 | .002 | -- | .078 |
| A-26 | Mudstone----- | 3360-WHW | 4.9 | .1 | 70.5 | 53.2 | 12.50 | .001 | -- | .082 |
| A-35 | Mudstone----- | 3359-WHW | 11.2 | .1 | 71.0 | 64.4 | 13.62 | .001 | -- | .094 |
| A-34 | Sandstone----- | -- | 10.8 | -- | -- | 75.2 | -- | -- | -- | -- |
| A-33 | Carbonate rock----- | -- | 33.4 | -- | -- | 108.6 | -- | -- | -- | -- |
| A-32 | Carbonate rock----- | -- | 26.4 | -- | -- | 135.0 | -- | -- | -- | -- |
| A-31 | Carbonate rock; fos. col. no. 11675----- | -- | 30.2 | -- | -- | 165.2 | -- | -- | -- | -- |
| A-30 | Sandstone, carbonatic----- | -- | 7.3 | -- | -- | 172.5 | -- | -- | -- | -- |
| A-29 | Carbonate rock----- | -- | 15.0 | -- | -- | 187.5 | -- | -- | -- | -- |
| A-28 | Carbonate rock; fos. col. no. 11674----- | -- | 10.8 | -- | -- | 198.3 | -- | -- | -- | -- |
| A-27 | Carbonate rock, argillaceous----- | -- | 2.6 | -- | -- | 200.9 | -- | -- | -- | -- |
| A-26 | Carbonate rock----- | -- | 15.0 | -- | -- | 215.9 | -- | -- | -- | -- |
| A-25 | Carbonate rock----- | -- | 7.8 | -- | -- | 223.7 | -- | -- | -- | -- |
| A-24 | Carbonate rock----- | -- | 6.0 | -- | -- | 229.7 | -- | -- | -- | -- |
| A-23 | Sandstone----- | -- | 6.5 | -- | -- | 236.2 | -- | -- | -- | -- |
| A-22 | Carbonate rock----- | -- | 12.8 | -- | -- | 249.0 | -- | -- | -- | -- |
| A-21 | Carbonate rock----- | -- | 13.0 | -- | -- | 262.0 | -- | -- | -- | -- |
| A-20 | Carbonate rock----- | -- | 15.0 | -- | -- | 277.0 | -- | -- | -- | -- |
| A-19 | Carbonate rock and sandstone----- | -- | 4.9 | -- | -- | 281.9 | -- | -- | -- | -- |
| A-18 | Sandstone----- | -- | 9.4 | -- | -- | 291.3 | -- | -- | -- | -- |
| A-17 | Carbonate rock----- | -- | 9.0 | -- | -- | 300.3 | -- | -- | -- | -- |
| A-16 | Carbonate rock----- | -- | 15.0 | -- | -- | 315.3 | -- | -- | -- | -- |

OFFICIAL USE ONLY

OFFICIAL USE ONLY

| | | | | | | | | | | |
|---------------------------------|---|----|------|----|----|-------|----|----|----|----|
| A-15 | Carbonate rock; fos. col. no. 11673 ----- | -- | 10.5 | -- | -- | 325.3 | -- | -- | -- | -- |
| A-14 | Carbonate rock ----- | -- | 8.5 | -- | -- | 334.3 | -- | -- | -- | -- |
| A-13 | Mudstone, carbonatic, and carbonatic sandstone ----- | -- | 6.1 | -- | -- | 340.4 | -- | -- | -- | -- |
| A-12 | Carbonate rock ----- | -- | 8.8 | -- | -- | 349.2 | -- | -- | -- | -- |
| A-11 | Sandstone and carbonate rock ----- | -- | 10.2 | -- | -- | 359.4 | -- | -- | -- | -- |
| A-10 | Sandstone ----- | -- | 4.0 | -- | -- | 363.4 | -- | -- | -- | -- |
| A-9 | Carbonate rock ----- | -- | 2.6 | -- | -- | 366.0 | -- | -- | -- | -- |
| A-8 | Carbonate rock, sandstone, and mudstone ----- | -- | 1.0 | -- | -- | 367.0 | -- | -- | -- | -- |
| A-7 | Carbonate rock and sandstone ----- | -- | 2.6 | -- | -- | 369.6 | -- | -- | -- | -- |
| A-6 | Sandstone ----- | -- | .3 | -- | -- | 369.9 | -- | -- | -- | -- |
| A-5 | Carbonate rock ----- | -- | 3.0 | -- | -- | 372.9 | -- | -- | -- | -- |
| A-4 | Sandstone and carbonate rock ----- | -- | 6.8 | -- | -- | 379.7 | -- | -- | -- | -- |
| A-3 | Carbonate rock ----- | -- | 1.0 | -- | -- | 380.7 | -- | -- | -- | -- |
| A-2 | Carbonate rock ----- | -- | 2.7 | -- | -- | 383.4 | -- | -- | -- | -- |
| A-1 | Mudstone ----- | -- | .3 | -- | -- | 383.7 | -- | -- | -- | -- |
| Quadrant formation—top bed only | | | | | | | | | | |
| Cq-1 | Sandstone ----- | -- | 4.6 | -- | -- | 4.6 | -- | -- | -- | -- |

RESTRICTION
OFFICIAL USE ONLY

RESTRICTION
OFFICIAL USE ONLY
14

West Fork of Blacktail Creek, Mont., lot 1302

Phosphoria formation measured and B and D members sampled near West Fork of Blacktail Creek, SE $\frac{1}{4}$ sec. 26, T. 12 S., R. 6 W., Beaverhead County, Mont., on southeast limb of an anticline. Beds A-1 through C-3 measured in bulldozer trench near top of hill on northeast side of creek; beds C-15 through E-1 measured in hand trench 500 yards farther south and about 250 feet up the slope from Blacktail road; rest of section measured from natural exposures near road. Beds strike N. 73° E. and dip 37° S. Section measured by E. R. Cressman, C. W. Tandy, and W. H. Wilson, and sampled by J. L. Elliott, B. K. Replogle, W. J. Garmoe, and R. F. Gosman in July 1949. Samples analyzed by U. S. Bureau of Mines laboratory, Albany, Oreg.

Samples analyzed for eU and chem. U by the U. S. Geological Survey laboratory, Geochemistry and Petrology Branch.

| Bed no. | Rock description | Sample no. | Thickness (feet) | Chemical analyses (percent) | | Cumulative thickness (feet) | Thickness x percent P ₂ O ₅ (cumulative) | Uranium content (percent) | | Thickness x percent eU (cumulative) |
|------------------------------------|---|------------|------------------|-------------------------------|----------------|-----------------------------|--|---------------------------|---------|-------------------------------------|
| | | | | P ₂ O ₅ | Acid insoluble | | | eU | Chem. U | |
| Dinwoody formation—lower beds only | | | | | | | | | | |
| Td-1 | Mudstone, calcareous ----- | -- | 1.2 | -- | -- | 1.2 | -- | -- | -- | -- |
| Td-2 | Covered ----- | -- | 8.0 | -- | -- | 9.2 | -- | -- | -- | -- |
| Td-3 | Limestone, argillaceous ----- | -- | 1.2 | -- | -- | 10.4 | -- | -- | -- | -- |
| Td-4 | Dolomite ----- | -- | .3 | -- | -- | 10.7 | -- | -- | -- | -- |
| Td-5 | Covered ----- | -- | 7.2 | -- | -- | 17.9 | -- | -- | -- | -- |
| E member of Phosphoria formation | | | | | | | | | | |
| E-10 | Limestone, sandy ----- | -- | 2.7 | -- | -- | 2.7 | -- | -- | -- | -- |
| E-9 | Dolomite, argillaceous; fos. col. no. 11670 ----- | -- | 3.4 | -- | -- | 6.1 | -- | -- | -- | -- |
| E-8 | Dolomite, cherty, argillaceous ----- | -- | 12.2 | -- | -- | 18.3 | -- | -- | -- | -- |
| E-7 | Chert, dolomitic, argillaceous, and cherty dolomite ----- | -- | 4.6 | -- | -- | 22.9 | -- | -- | -- | -- |
| E-6 | Chert, dolomitic ----- | -- | 3.8 | -- | -- | 26.7 | -- | -- | -- | -- |
| E-5 | Sandstone, cherty ----- | -- | 2.0 | -- | -- | 28.7 | -- | -- | -- | -- |
| E-4 | Chert, dolomitic ----- | -- | 5.1 | -- | -- | 33.8 | -- | -- | -- | -- |
| E-3 | Sandstone ----- | -- | 18.0 | -- | -- | 51.8 | -- | -- | -- | -- |
| E-2 | Chert ----- | -- | 11.9 | -- | -- | 63.7 | -- | -- | -- | -- |
| E-1 | Sandstone, cherty ----- | -- | 48.0 | -- | -- | 111.7 | -- | -- | -- | -- |
| D member of Phosphoria formation | | | | | | | | | | |
| D-34 | Phosphate rock, argillaceous ----- | 668-ERC | 0.7 | 26.4 | 25.8 | 0.7 | 18.48 | 0.010 | 0.010 | 0.007 |
| D-33 | Phosphate rock, argillaceous ----- | 667-ERC | 1.0 | 27.5 | 20.2 | 1.7 | 45.98 | .010 | .010 | .017 |
| D-32 | Phosphate rock, argillaceous; fos. col. no. 11669 ----- | 666-ERC | 2.7 | 16.3 | 37.8 | 4.4 | 89.99 | .008 | .007 | .039 |
| D-31 | Mudstone, phosphatic ----- | 665-ERC | 3.8 | 8.1 | 52.2 | 8.2 | 120.77 | .006 | .004 | .061 |
| D-30 | Mudstone, carbonatic ----- | 664-ERC | 2.4 | 5.6 | 40.8 | 10.6 | 134.21 | .002 | -- | .066 |
| D-29 | Mudstone, phosphatic ----- | 663-ERC | 3.3 | 8.3 | 53.7 | 13.9 | 161.60 | .004 | -- | .079 |
| D-28 | Mudstone, phosphatic ----- | 662-ERC | 3.3 | 10.6 | 49.3 | 17.2 | 196.58 | .005 | .005 | .096 |
| D-27 | Mudstone, carbonatic ----- | 661-CWT | 2.7 | 3.4 | 46.7 | 19.9 | 205.76 | .001 | -- | .099 |
| D-26 | Mudstone, phosphatic, carbonatic; fos. col. no. 11668 ----- | 660-CWT | .8 | 8.1 | 47.2 | 20.7 | 212.24 | .004 | -- | .102 |
| D-25 | Mudstone ----- | 659-CWT | 1.5 | 4.6 | 63.4 | 22.2 | 219.14 | .003 | -- | .106 |

OFFICIAL USE ONLY

OFFICIAL USE ONLY

OFFICIAL USE ONLY

RESERVED

| | | | | | | | | | | |
|------|--|----------|-----|------|------|------|--------|------|------|------|
| D-24 | Phosphate rock, argillaceous----- | 658- CWT | 2.5 | 16.1 | 34.6 | 24.7 | 259.39 | .007 | .007 | .124 |
| D-23 | Mudstone, phosphatic----- | 657- CWT | 2.9 | 12.0 | 39.0 | 27.6 | 294.19 | .005 | .005 | .138 |
| D-22 | Mudstone, phosphatic, carbonatic----- | 656- CWT | .8 | 11.4 | 37.8 | 28.4 | 303.31 | .004 | -- | .142 |
| D-21 | Mudstone, phosphatic----- | 655- CWT | 2.0 | 8.1 | 52.2 | 30.4 | 319.51 | .004 | -- | .150 |
| D-20 | Mudstone, carbonatic----- | 654- CWT | 3.0 | 7.3 | 44.8 | 33.4 | 341.41 | .005 | .005 | .164 |
| D-19 | Mudstone, phosphatic----- | 653- CWT | 2.4 | 10.2 | 46.6 | 35.8 | 365.89 | .006 | .005 | .179 |
| D-18 | Carbonate rock----- | 669- ERC | .8 | 1.7 | 9.8 | 36.6 | 367.25 | .002 | -- | .180 |
| D-17 | Phosphate rock, argillaceous----- | 652- ERC | 1.1 | 26.7 | 14.2 | 37.7 | 396.62 | .009 | .010 | .190 |
| D-16 | Mudstone, carbonatic----- | 651- ERC | 2.8 | 4.6 | 52.7 | 40.5 | 409.50 | .005 | .006 | .204 |
| D-15 | Mudstone----- | 650- ERC | 3.0 | 2.5 | 63.2 | 43.5 | 417.00 | .004 | -- | .216 |
| D-14 | Mudstone----- | 649- ERC | 1.7 | 4.6 | 58.0 | 45.2 | 424.82 | .004 | -- | .223 |
| D-13 | Phosphate rock and phosphatic mudstone----- | 648- ERC | .9 | 21.6 | 26.2 | 46.1 | 444.26 | .008 | .007 | .230 |
| D-12 | Phosphate rock; fos. col. no. 11667----- | 647- ERC | 1.3 | 30.6 | 11.3 | 47.4 | 484.04 | .008 | .010 | .241 |
| D-11 | Mudstone, phosphatic, carbonatic----- | 677- CWT | 2.7 | 8.4 | 44.8 | 50.1 | 506.72 | .006 | .004 | .257 |
| D-10 | Mudstone, phosphatic and phosphate rock----- | 676- CWT | 1.1 | 18.6 | 27.9 | 51.2 | 527.18 | .007 | .006 | .265 |
| D- 9 | Carbonate rock, argillaceous----- | 675- CWT | 1.5 | 3.1 | 28.1 | 52.7 | 531.83 | .003 | -- | .269 |
| D- 8 | Mudstone, phosphatic, carbonatic----- | 674- CWT | .8 | 10.3 | 35.1 | 53.5 | 540.07 | .007 | .005 | .275 |
| D- 7 | Carbonate rock, argillaceous----- | 673- CWT | 1.0 | 1.2 | 21.2 | 54.5 | 541.27 | .002 | -- | .277 |
| D- 6 | Mudstone, phosphatic, carbonatic----- | 672- CWT | .8 | 13.8 | 34.2 | 55.3 | 552.31 | .007 | .005 | .282 |
| D- 5 | Carbonate rock----- | 671- CWT | 1.0 | 1.2 | 17.2 | 56.3 | 553.51 | .002 | -- | .284 |
| D- 4 | Mudstone, phosphatic; fos. col. no. 11666----- | 670- CWT | 1.5 | 14.7 | 36.0 | 57.8 | 575.56 | .007 | .005 | .295 |
| D- 3 | Phosphate rock, argillaceous----- | 680- ERC | .7 | 26.7 | 20.5 | 58.5 | 594.25 | .007 | .006 | .300 |
| D- 2 | Covered interval----- | -- | 1.0 | -- | -- | 59.5 | -- | -- | -- | -- |
| D- 1 | Mudstone and argillaceous phosphate rock; fos. col. no. 11665----- | 679- ERC | 1.6 | 12.9 | 50.5 | 61.1 | -- | .007 | .006 | -- |

C member of Phosphoria formation

| | | | | | | | | | | |
|------|--|----------|------|-----|------|-------|----|--------|-------|----|
| C-15 | Chert----- | 678- ERC | 2.9 | 0.5 | 94.3 | 2.9 | -- | 0.0005 | 0.000 | -- |
| C-14 | Chert----- | -- | 3.0 | -- | -- | 5.9 | -- | -- | -- | -- |
| C-13 | Sandstone----- | -- | 14.0 | -- | -- | 19.9 | -- | -- | -- | -- |
| C-12 | Covered interval----- | -- | 47.0 | -- | -- | 66.9 | -- | -- | -- | -- |
| C-11 | Dolomite----- | -- | 8.1 | -- | -- | 75.0 | -- | -- | -- | -- |
| C-10 | Dolomite----- | -- | 2.6 | -- | -- | 77.6 | -- | -- | -- | -- |
| C- 9 | Chert, dolomitic, and argillaceous dolomite----- | -- | 13.5 | -- | -- | 91.1 | -- | -- | -- | -- |
| C- 8 | Dolomite----- | -- | 1.2 | -- | -- | 92.3 | -- | -- | -- | -- |
| C- 7 | Dolomite, cherty, argillaceous----- | -- | 4.2 | -- | -- | 96.5 | -- | -- | -- | -- |
| C- 6 | Covered interval----- | -- | 4.5 | -- | -- | 101.0 | -- | -- | -- | -- |
| C- 5 | Dolomite, silty, and dolomitic chert----- | -- | 3.5 | -- | -- | 104.5 | -- | -- | -- | -- |
| C- 4 | Covered interval----- | -- | 9.5 | -- | -- | 114.0 | -- | -- | -- | -- |
| C- 3 | Chert----- | -- | 15.3 | -- | -- | 129.3 | -- | -- | -- | -- |
| C- 2 | Chert----- | -- | 7.9 | -- | -- | 137.2 | -- | -- | -- | -- |

Bed C-2 is cut by several faults, true thickness not known.

¹ Fossil collection made by W. R. Record, Paleontology and Stratigraphy Branch, U. S. Geological Survey.

OFFICIAL USE ONLY

West Fork of Blacktail Creek—Continued

| Bed no. | Rock description | Sample no. | Thickness (feet) | Chemical analyses (percent) | | Cumulative thickness (feet) | Thickness x percent P ₂ O ₅ (cumulative) | Uranium content (percent) | | Thickness x percent eU (cumulative) |
|--|---|------------|------------------|-------------------------------|----------------|-----------------------------|--|---------------------------|---------|-------------------------------------|
| | | | | P ₂ O ₅ | Acid insoluble | | | eU | Chem. U | |
| C- 1 | Chert ----- | -- | 17.3 | -- | -- | 154.5 | -- | -- | -- | -- |
| B member of Phosphoria formation | | | | | | | | | | |
| B-10 | Chert, silty----- | 646- ERC | 0.5 | 0.3 | 94.0 | 0.5 | 0.15 | 0.001 | -- | 0.000 |
| B- 9 | Mudstone and chert ----- | 645-WHW | 1.1 | .2 | 95.2 | 1.6 | .37 | .0005 | -- | .001 |
| B- 8 | Mudstone ----- | 644-WHW | 1.8 | .6 | 87.0 | 3.4 | 1.45 | .003 | 0.001 | .006 |
| B- 7 | Mudstone and phosphatic mudstone ----- | 643-WHW | 1.5 | 6.5 | 69.5 | 4.9 | 11.20 | .004 | -- | .012 |
| B- 6 | Mudstone ----- | 642-WHW | 1.9 | 2.3 | 81.3 | 6.8 | 15.57 | .002 | -- | .016 |
| B- 5 | Mudstone, phosphatic, and argillaceous phosphate rock ----- | 641-WHW | 1.6 | 12.0 | 52.5 | 8.4 | 34.77 | .005 | .004 | .024 |
| B- 4 | Phosphate rock, argillaceous ----- | 640-WHW | .5 | 20.3 | 26.3 | 8.9 | 44.92 | .011 | .011 | .030 |
| B- 3 | Mudstone ----- | 639- ERC | .6 | 3.2 | 71.5 | 9.5 | 46.84 | .005 | .003 | .033 |
| B- 2 | Mudstone, phosphatic and phosphate rock ----- | 638- ERC | 1.5 | 19.8 | 28.8 | 11.0 | 76.54 | .009 | .008 | .046 |
| B- 1 | Phosphate rock, cherty, and phosphatic sandstone; fos. col. no. 11664 ----- | 637- ERC | 1.4 | 19.4 | 41.0 | 12.4 | 103.70 | .008 | .007 | .057 |
| A member of Phosphoria formation—upper part only | | | | | | | | | | |
| A- 9 | Mudstone ----- | -- | 3.4 | -- | -- | 3.4 | -- | -- | -- | -- |
| A- 8 | Dolomite, argillaceous ----- | -- | 2.7 | -- | -- | 6.1 | -- | -- | -- | -- |
| A- 7 | Dolomite, argillaceous ----- | -- | 6.0 | -- | -- | 12.1 | -- | -- | -- | -- |
| A- 6 | Sandstone, dolomitic ----- | -- | 5.6 | -- | -- | 17.7 | -- | -- | -- | -- |
| A- 5 | Dolomite ----- | -- | 2.2 | -- | -- | 19.9 | -- | -- | -- | -- |
| A- 4 | Dolomite, argillaceous ----- | -- | 2.9 | -- | -- | 22.8 | -- | -- | -- | -- |
| A- 3 | Dolomite, argillaceous ----- | -- | 4.5 | -- | -- | 27.3 | -- | -- | -- | -- |
| A- 2 | Sandstone ----- | -- | 5.0 | -- | -- | 32.3 | -- | -- | -- | -- |
| A- 1 | Dolomite, argillaceous ----- | -- | 15.0 | -- | -- | 47.3 | -- | -- | -- | -- |

OFFICIAL USE ONLY

OFFICIAL USE ONLY

West Fork of Madison River, Mont., lot 1318

D member of Phosphoria formation sampled and part of E member measured near West Fork of Madison River, SE $\frac{1}{4}$ sec. 30, T. 12 S., R. 2 W., Beaverhead County, Mont., on northeast limb of small anticline. D member sampled in bulldozer trench; E member measured from natural exposure at northeast end of trench. Beds strike N. 30° W. and dip 30° NE. Section measured by C. W. Tandy, J. L. Elliott, and E. R. Cressman and sampled by B. K. Replogle in August 1949. Samples analyzed by U. S. Bureau of Mines laboratory, Albany, Oreg.

Samples analyzed for eU and chem. U by the U. S. Geological Survey laboratory, Geochemistry and Petrology Branch.

| Bed no. | Rock description | Sample no. | Thickness (feet) | Chemical analyses (percent) | | Cumulative thickness (feet) | Thickness x percent P ₂ O ₅ (cumulative) | Uranium content (percent) | | Thickness x percent chem. U (cumulative) |
|--|--|------------|------------------|-------------------------------|----------------|-----------------------------|--|---------------------------|---------|--|
| | | | | P ₂ O ₅ | Acid insoluble | | | eU | Chem. U | |
| E member of Phosphoria formation—top not exposed | | | | | | | | | | |
| E- 8 | Quartzite ----- | -- | 13.5 | -- | -- | 13.5 | -- | -- | -- | -- |
| E- 7 | Quartzite ----- | -- | 10.1 | -- | -- | 23.6 | -- | -- | -- | -- |
| E- 6 | Quartzite ----- | -- | 1.9 | -- | -- | 25.5 | -- | -- | -- | -- |
| E- 5 | Quartzite ----- | -- | 16.9 | -- | -- | 42.4 | -- | -- | -- | -- |
| E- 4 | Chert ----- | -- | 10.6 | -- | -- | 53.0 | -- | -- | -- | -- |
| E- 3 | Chert ----- | -- | 19.0 | -- | -- | 72.0 | -- | -- | -- | -- |
| E- 2 | Chert ----- | -- | 1.3 | -- | -- | 73.3 | -- | -- | -- | -- |
| E- 1 | Chert ----- | -- | 13.5 | -- | -- | 86.8 | -- | -- | -- | -- |
| D member of Phosphoria formation | | | | | | | | | | |
| D-11 | Mudstone ----- | -- | 13.0 | -- | -- | 13.0 | -- | -- | -- | -- |
| D-10 | Mudstone ----- | 3404- JLE | 2.0 | 1.8 | 81.3 | 15.0 | 3.60 | 0.003 | 0.002 | 0.004 |
| D- 9 | Mudstone ----- | 3403- JLE | .8 | .8 | 82.0 | 15.8 | 4.24 | .003 | .001 | .005 |
| D- 8 | Mudstone ----- | 3402- JLE | 3.1 | 3.3 | 74.0 | 18.9 | 14.47 | .004 | .002 | .011 |
| D- 7 | Phosphate rock, argillaceous ----- | 3401- JLE | .9 | 17.8 | 42.6 | 19.8 | 30.49 | .007 | .008 | .018 |
| D- 6 | Phosphate rock and argillaceous phosphate rock ----- | 3400- JLE | .8 | 28.4 | 20.0 | 20.6 | 53.21 | .010 | .012 | .028 |
| D- 5 | Mudstone ----- | 3399- JLE | 4.1 | 5.5 | 63.3 | 24.7 | 88.06 | .005 | .004 | .044 |
| D- 4 | Phosphate rock and phosphatic mudstone ----- | 3398- JLE | 1.1 | 21.1 | 27.5 | 25.8 | 111.27 | .009 | .011 | .056 |
| -- | Phosphate rock ----- | 3398b- JLE | (.7) | 29.3 | 14.7 | -- | -- | .010 | .014 | -- |
| -- | Mudstone, phosphatic ----- | 3398a- JLE | (.4) | 8.5 | 49.9 | -- | -- | .006 | .007 | -- |
| 3398- JLE resampled as two units. | | | | | | | | | | |
| D- 3 | Mudstone, phosphatic ----- | 3397-CWT | .8 | 12.5 | 49.3 | 26.6 | 121.27 | .007 | .006 | .061 |
| D- 2 | Phosphate rock ----- | 3396-CWT | .8 | 30.7 | 9.3 | 27.4 | 145.83 | .008 | .009 | .068 |
| D- 1 | Mudstone, phosphatic ----- | 3395-CWT | 1.0 | 11.5 | 55.0 | 28.4 | 157.33 | .005 | .004 | .072 |
| C member of Phosphoria formation—top bed not logged, remainder not exposed | | | | | | | | | | |

OFFICIAL USE ONLY

OFFICIAL USE ONLY

Little Water Canyon, Mont., lot 1341

B and D members of Phosphoria formation sampled in two bulldozer trenches and C member measured from natural exposures near the head of Little Water Canyon between Timber Butte and Dixon Mountain on the north limb of a synclinal structure, SE $\frac{1}{4}$ sec. 4, T. 13 S., R. 10 W., Beaverhead County, Mont. Most beds strike N. 50° W. and dip 45-50° SW. but faulted segment of E member is nearly horizontal. Section measured and sampled by R. F. Gosman, R. G. Waring, T. M. Cheney, and F. D. Frieske in September 1950. Samples analyzed by U. S. Bureau of Mines laboratory, Albany, Oreg.

Samples analyzed for eU and chem. U by the U. S. Geological Survey laboratory, Geochemistry and Petrology Branch.

| Bed no. | Rock description | Sample no. | Thickness (feet) | Chemical analyses (percent) | | Cumulative thickness (feet) | Thickness x percent P ₂ O ₅ (cumulative) | Uranium content (percent) | | Thickness x percent eU (cumulative) |
|--|---|------------|------------------|-------------------------------|----------------|-----------------------------|--|---------------------------|---------|-------------------------------------|
| | | | | P ₂ O ₅ | Acid insoluble | | | eU | Chem. U | |
| E member of Phosphoria formation—lower part (?) only | | | | | | | | | | |
| E- 2 | Chert and mudstone ----- Fault—unknown displacement. | -- | 7.4 | -- | -- | 7.4 | -- | -- | -- | -- |
| E- 1 | Mudstone and chert ----- Probable fault between D and E members. | -- | 13.8 | -- | -- | 21.2 | -- | -- | -- | -- |
| D member of Phosphoria formation | | | | | | | | | | |
| D-25 | Mudstone, carbonatic----- | 5364-TMC | 2.6 | 4.1 | 53.8 | 2.6 | 10.66 | 0.005 | 0.003 | 0.013 |
| D-24 | Mudstone, carbonatic----- Beds D-24 and D-25 sheared and bedding indistinct. | 5363-TMC | 2.4 | 4.5 | 49.2 | 5.0 | 21.46 | .006 | .004 | .027 |
| D-23 | Mudstone, carbonatic----- | 5362-TMC | 2.4 | 5.5 | 47.4 | 7.4 | 34.66 | .005 | .004 | .039 |
| D-22 | Mudstone, phosphatic----- | 5361-TMC | .9 | 8.3 | 51.9 | 8.3 | 42.13 | .005 | .004 | .044 |
| D-21 | Mudstone, carbonatic----- | 5360-TMC | 2.2 | 6.1 | 51.7 | 10.5 | 55.55 | .005 | .004 | .055 |
| D-20 | Mudstone----- | 5359-TMC | 1.5 | 6.1 | 52.4 | 12.0 | 64.70 | .004 | -- | .061 |
| D-19 | Mudstone, phosphatic, carbonatic----- | 5358-RGW | 1.1 | 10.4 | 39.7 | 13.1 | 76.14 | .004 | -- | .065 |
| D-18 | Phosphate rock, argillaceous----- | 5357-RGW | 1.2 | 21.9 | 24.0 | 14.3 | 102.42 | .005 | .004 | .071 |
| D-17 | Phosphate rock, argillaceous----- | 5356-RGW | 1.5 | 19.5 | 29.9 | 15.8 | 131.67 | .001 | -- | .073 |
| D-16 | Phosphate rock ----- | 5355-RGW | .8 | 31.5 | 5.0 | 16.6 | 156.87 | .004 | -- | .076 |
| D-15 | Mudstone, carbonatic----- | 5354-RGW | .6 | 4.1 | 53.8 | 17.2 | 159.33 | .005 | .004 | .079 |
| D-14 | Mudstone, carbonatic, and phosphatic mudstone | 5353-RGW | .6 | 4.5 | 49.2 | 17.8 | 162.03 | .003 | -- | .081 |
| D-13 | Mudstone, carbonatic----- | 5352-RGW | .8 | 5.5 | 47.4 | 18.6 | 166.43 | .004 | -- | .084 |
| D-12 | Mudstone, phosphatic----- | 5351-RGW | 1.4 | 13.3 | 40.3 | 20.0 | 185.05 | .003 | -- | .088 |
| D-11 | Phosphate rock and mudstone----- | 5350-RGW | 1.9 | 22.7 | 19.9 | 21.9 | 228.18 | .004 | -- | .096 |
| D-10 | Mudstone----- | 5349-RGW | 1.6 | 3.8 | 68.5 | 23.5 | 234.26 | .004 | -- | .102 |
| D- 9 | Mudstone, phosphatic----- | 5348-RFG | 1.5 | 13.9 | 41.3 | 25.0 | 255.11 | .005 | .003 | .110 |
| D- 8 | Phosphate rock, argillaceous----- | 5347-RFG | 1.8 | 21.1 | 24.6 | 26.8 | 293.09 | .006 | .004 | .120 |

OFFICIAL USE ONLY

OFFICIAL USE ONLY

| | | | | | | | | | | |
|------|--|----------|-----|------|------|------|--------|------|------|------|
| D- 7 | Mudstone and phosphatic mudstone ----- | 5346-RFG | 1.2 | 10.2 | 52.6 | 28.0 | 305.33 | .005 | .002 | .126 |
| D- 6 | Mudstone and phosphatic mudstone ----- | 5345-RGW | .9 | 10.4 | 51.8 | 28.9 | 314.69 | .004 | .002 | .130 |
| D- 5 | Mudstone, phosphatic ----- | 5344-RGW | 1.8 | 13.5 | 41.0 | 30.7 | 338.99 | .004 | -- | .137 |
| D- 4 | Mudstone ----- | 5343-RGW | 1.3 | 5.2 | 56.1 | 32.0 | 345.75 | .002 | -- | .140 |
| D- 3 | Mudstone, phosphatic ----- | 5342-RGW | .9 | 9.2 | 55.5 | 32.9 | 354.03 | .003 | -- | .143 |
| D- 2 | Sandstone, phosphatic ----- | 5341-RGW | 1.9 | 11.1 | 58.2 | 34.8 | 375.12 | .005 | .004 | .152 |
| D- 1 | Sandstone ----- | 5340-RGW | .9 | 6.4 | 64.1 | 35.7 | 380.88 | .003 | -- | .155 |

C member of Phosphoria formation

| | | | | | | | | | | |
|------|------------------------------|----|------|----|----|-------|----|----|----|----|
| C- 8 | Carbonate rock ----- | -- | 2.9 | -- | -- | 2.9 | -- | -- | -- | -- |
| C- 7 | Covered interval ----- | -- | 21. | -- | -- | 23.9 | -- | -- | -- | -- |
| C- 6 | Carbonate rock, cherty ----- | -- | 23.5 | -- | -- | 47.4 | -- | -- | -- | -- |
| C- 5 | Covered interval ----- | -- | 10. | -- | -- | 57.4 | -- | -- | -- | -- |
| C- 4 | Sandstone, calcareous ----- | -- | 14.2 | -- | -- | 71.6 | -- | -- | -- | -- |
| C- 3 | Carbonate rock ----- | -- | 2.8 | -- | -- | 74.4 | -- | -- | -- | -- |
| C- 2 | Sandstone, calcareous ----- | -- | 24.8 | -- | -- | 99.2 | -- | -- | -- | -- |
| C- 1 | Chert ----- | -- | 20.0 | -- | -- | 119.2 | -- | -- | -- | -- |

B member of Phosphoria formation

| | | | | | | | | | | |
|------|---|----------|------|------|------|------|--------|-------|-------|-------|
| B-21 | Phosphate rock, sandy ----- | 5373-TMC | 0.2 | 18.2 | 45.6 | 0.2 | -- | 0.009 | 0.008 | -- |
| B-20 | Carbonate rock and carbonatic chert ----- | -- | .9 | -- | -- | 1.1 | -- | -- | -- | -- |
| B-19 | Chert, carbonatic ----- | -- | 1.6 | -- | -- | 2.7 | -- | -- | -- | -- |
| B-18 | Chert ----- | -- | 14.2 | -- | -- | 16.9 | -- | -- | -- | -- |
| B-17 | Mudstone ----- | -- | 3.4 | -- | -- | 20.3 | -- | -- | -- | -- |
| B-16 | Mudstone, cherty and chert ----- | -- | 2.0 | -- | -- | 22.3 | -- | -- | -- | -- |
| B-15 | Mudstone ----- | -- | 4.6 | -- | -- | 26.9 | -- | -- | -- | -- |
| B-14 | Chert ----- | -- | 1.4 | -- | -- | 28.3 | -- | -- | -- | -- |
| B-13 | Mudstone ----- | -- | .6 | -- | -- | 28.9 | -- | -- | -- | -- |
| B-12 | Chert ----- | -- | .6 | -- | -- | 29.5 | -- | -- | -- | -- |
| B-11 | Mudstone ----- | -- | 2.3 | -- | -- | 31.8 | -- | -- | -- | -- |
| B-10 | Mudstone, calcareous ----- | -- | 1.0 | -- | -- | 32.8 | -- | -- | -- | -- |
| B- 9 | Mudstone ----- | -- | 1.5 | -- | -- | 34.3 | -- | -- | -- | -- |
| B- 8 | Mudstone and phosphate rock ----- | 5372-RGW | 2.1 | 14.2 | 43.0 | 36.4 | 29.82 | .007 | .005 | 0.015 |
| B- 7 | Phosphate rock ----- | 5371-RGW | .8 | 24.2 | 12.8 | 37.2 | 49.18 | .011 | .011 | .024 |
| B- 6 | Mudstone, phosphatic and mudstone ----- | 5370-RGW | 1.6 | 17.0 | 28.2 | 38.8 | 76.38 | .010 | .010 | .040 |
| B- 5 | Carbonate rock ----- | 5369-RGW | 2.6 | 7.0 | 17.3 | 41.4 | 94.58 | .005 | .004 | .052 |
| B- 4 | Mudstone, phosphatic ----- | 5368-RGW | 2.3 | 12.7 | 40.2 | 43.7 | 123.79 | .006 | .006 | .066 |
| B- 3 | Phosphate rock and mudstone ----- | 5367-RGW | .8 | 20.2 | 22.2 | 44.5 | 139.95 | .008 | .009 | .073 |
| B- 2 | Phosphate rock, argillaceous ----- | 5366-RGW | 1.1 | 19.5 | 29.9 | 45.6 | 161.40 | .008 | .007 | .082 |
| B- 1 | Phosphate rock ----- | 5365-TMC | 1.5 | 31.5 | 5.0 | 47.1 | 208.65 | .011 | .011 | .098 |

A member of Phosphoria formation—top bed only

| | | | | | | | | | | |
|------|----------------------|----|-----|----|----|-----|----|----|----|----|
| A- 1 | Carbonate rock ----- | -- | 5.6 | -- | -- | 5.6 | -- | -- | -- | -- |
|------|----------------------|----|-----|----|----|-----|----|----|----|----|

OFFICIAL USE ONLY

OFFICIAL USE ONLY

Little Sheep Creek, Mont., lots 1294 and 1295

Phosphoria formation sampled at Little Sheep Creek, Beaverhead County, Mont., on south end of major anticlinal structure. Beds A-1 to C-1 from bulldozer trench, and beds C-2 to C-12 from natural exposure near Middle Fork of Little Sheep Creek, SW $\frac{1}{4}$ sec. 34, T. 14 S., R. 9 W. strike N. 50° W. and dip 25° SE. Beds C-13 to E-6 from bulldozer trench near West Fork of Little Sheep Creek, S $\frac{1}{2}$ sec. 33, T. 14 S., R. 9 W. strike N. 80° E. and dip 10° S. Section measured by E. R. Cressman, W. H. Wilson, and C. W. Tandy and sampled by W. J. Garmoe, B. K. Replogle, R. F. Gosman, and J. L. Elliott in July 1949. Samples analyzed by U. S. Bureau of Mines laboratory, Albany, Oreg.

Samples analyzed for eU and chem. U by the U. S. Geological Survey laboratory, Geochemistry and Petrology Branch.

| Bed no. | Rock description | Sample no. | Thickness (feet) | Chemical analyses (percent) | | Cumulative thickness (feet) | Thickness x percent P ₂ O ₅ (cumulative) | Uranium content (percent) | | Thickness x percent eU (cumulative) |
|--|---|------------|------------------|-------------------------------|----------------|-----------------------------|--|---------------------------|---------|-------------------------------------|
| | | | | P ₂ O ₅ | Acid insoluble | | | eU | Chem. U | |
| E member of Phosphoria formation, lot 1295— lower part only | | | | | | | | | | |
| E- 6 | Chert and silty chert ----- | -- | 11.0 | -- | -- | 11.0 | -- | -- | -- | -- |
| E- 5 | Chert, silty, silty dolomite, chert, and dolomite ----- | -- | 22.8 | -- | -- | 33.8 | -- | -- | -- | -- |
| E- 4 | Chert, silty; fos. col. no. 11663 ----- | -- | 12.8 | -- | -- | 46.6 | -- | -- | -- | -- |
| E- 3 | Chert, silty; fos. col. no. 11662 ----- | -- | 5.5 | -- | -- | 52.1 | -- | -- | -- | -- |
| E- 2 | Chert, silty; fos. col. no. 11661 ----- | -- | 10.4 | -- | -- | 62.5 | -- | -- | -- | -- |
| E- 1 | Mudstone, cherty; fos. col. no. 11660 ----- | -- | 15.0 | -- | -- | 77.5 | -- | -- | -- | -- |
| D member of Phosphoria formation, lot 1295 | | | | | | | | | | |
| D-18 | Mudstone, carbonatic; fos. col. no. 11659 --- | 358-ERC | 2.3 | 2.0 | 53.6 | 2.3 | -- | 0.002 | -- | -- |
| D-17 | Mudstone, carbonatic; fos. col. no. 11658 --- | 357-ERC | 5.3 | 5.5 | 46.0 | 7.6 | -- | .002 | -- | -- |
| Beds D-16 and D-17 separated by fault of unknown stratigraphic displacement. | | | | | | | | | | |
| D-16 | Mudstone ----- | 356-ERC | 3.7 | 1.0 | 84.5 | 11.3 | 3.70 | .001 | -- | 0.004 |
| D-15 | Mudstone, carbonatic ----- | 355-ERC | 1.8 | 1.3 | 59.2 | 13.1 | 6.04 | .003 | -- | .009 |
| D-14 | Mudstone, carbonatic ----- | 354-ERC | 1.7 | 3.8 | 54.2 | 14.8 | 12.50 | .004 | -- | .016 |
| D-13 | Mudstone, phosphatic, carbonatic, and carbonatic mudstone ----- | 353-ERC | 2.0 | 6.7 | 41.9 | 16.8 | 25.90 | .004 | -- | .024 |
| D-12 | Carbonate rock, phosphatic, argillaceous --- | 352-ERC | .7 | 11.5 | 20.9 | 17.5 | 33.95 | .004 | -- | .027 |
| D-11 | Mudstone, carbonatic, phosphatic mudstone, and phosphate rock ----- | 351-ERC | 2.0 | 10.7 | 41.1 | 19.5 | 55.35 | .004 | -- | .035 |
| Bed D-11 is sheared; D-10 to D-12 interval not more than 2 feet. | | | | | | | | | | |
| D-10 | Mudstone, carbonatic, and phosphatic, carbonatic mudstone ----- | 350-ERC | 1.0 | 14.3 | 26.9 | 20.5 | 69.65 | .002 | -- | .037 |
| D- 9 | Carbonate rock, argillaceous ----- | 349-ERC | .5 | 2.5 | 20.3 | 21.0 | 70.90 | .001 | -- | .037 |
| D- 8 | Mudstone, phosphatic; fos. col. no. 11657 --- | 348-ERC | 1.4 | 10.6 | 45.1 | 22.4 | 85.74 | .007 | -- | .047 |

OFFICIAL USE ONLY

OFFICIAL USE ONLY

| | | | | | | | | | | |
|------|--|----------|------|-------|-------|--------|---------|-------|----|-------|
| D- 7 | Mudstone and argillaceous phosphate rock--- | 347- ERC | . 7 | 8. 6 | 54. 9 | 23. 1 | 91. 76 | . 004 | -- | . 050 |
| D- 6 | Mudstone, phosphatic, and argillaceous phosphate rock----- | 346- ERC | 1. 7 | 17. 0 | 37. 1 | 24. 8 | 120. 66 | . 006 | -- | . 060 |
| D- 5 | Mudstone----- | 345- ERC | . 45 | 1. 5 | 72. 9 | 25. 25 | 121. 34 | . 003 | -- | . 061 |
| D- 4 | Phosphate rock, phosphatic mudstone, and mudstone----- | 344- ERC | . 9 | 23. 7 | 23. 7 | 26. 15 | 142. 66 | . 007 | -- | . 068 |
| D- 3 | Mudstone----- | 343- ERC | . 5 | 6. 7 | 63. 2 | 26. 65 | 146. 02 | . 003 | -- | . 069 |
| D- 2 | Mudstone, phosphatic, calcareous ----- | 342- ERC | . 6 | 8. 5 | 56. 3 | 27. 25 | 151. 12 | . 005 | -- | . 072 |
| D- 1 | Phosphate rock, sandy ; fos. col. no. 11656- | 341- ERC | 1. 1 | 16. 9 | 25. 4 | 28. 35 | 169. 70 | . 009 | -- | . 082 |

C member of Phosphoria formation, lots 1294 and 1295

| | | | | | | | | | | |
|------|---|----------|-------|------|-------|--------|----|--------|----|----|
| | lot 1295 | | | | | | | | | |
| C-13 | Limestone----- | 340- ERC | 1. 8 | 0. 9 | 5. 0 | 1. 8 | -- | 0. 001 | -- | -- |
| C-12 | Limestone; fos. col. no. 11653 ----- | -- | 7. 0 | -- | -- | 8. 8 | -- | -- | -- | -- |
| C-11 | Limestone----- | -- | 9. 0 | -- | -- | 17. 8 | -- | -- | -- | -- |
| C-10 | Limestone; fos. col. no. 11652 ----- | -- | 4. 6 | -- | -- | 22. 4 | -- | -- | -- | -- |
| C- 9 | Limestone, cherty, silty, and silty limestone----- | -- | 31. 0 | -- | -- | 53. 4 | -- | -- | -- | -- |
| C- 8 | Mudstone, calcareous, dolomitic; fos. col. no. 11651----- | -- | 25. 0 | -- | -- | 78. 4 | -- | -- | -- | -- |
| C- 7 | Chert and limestone; fos. col. no. 11650 ----- | -- | 11. 0 | -- | -- | 89. 4 | -- | -- | -- | -- |
| C- 6 | Limestone; fos. col. no. 11649 ----- | -- | 6. 0 | -- | -- | 95. 4 | -- | -- | -- | -- |
| C- 5 | Limestone----- | -- | 4. 7 | -- | -- | 100. 1 | -- | -- | -- | -- |
| C- 4 | Dolomite, sandy ----- | -- | 11. 0 | -- | -- | 111. 1 | -- | -- | -- | -- |
| C- 3 | Dolomite ----- | -- | 24. 0 | -- | -- | 135. 1 | -- | -- | -- | -- |
| C- 2 | Sandstone, dolomitic ; fos. col. no. 11648-- | -- | 4. 5 | -- | -- | 139. 6 | -- | -- | -- | -- |
| -- | Covered interval----- | -- | 30 | -- | -- | 169. 6 | -- | -- | -- | -- |
| | lot 1294 | | | | | | | | | |
| C- 1 | Mudstone----- | 339-CWT | 6. 0 | . 6 | 88. 7 | 175. 6 | -- | . 001 | -- | -- |

B member of Phosphoria formation, lot 1294

| | | | | | | | | | | |
|------|---|---------|-------|-------|-------|-------|--------|--------|--------|--------|
| B-15 | Phosphate rock, argillaceous; fos. col. no. 11647 ----- | 338-CWT | 1. 3 | 25. 3 | 17. 8 | 1. 3 | 32. 89 | 0. 008 | 0. 008 | 0. 010 |
| B-14 | Chert----- | 337-CWT | 13. 3 | . 3 | 92. 5 | 14. 6 | 36. 88 | . 001 | -- | . 024 |
| B-13 | Mudstone----- | 336-CWT | 9. 3 | . 2 | 87. 2 | 23. 9 | 38. 74 | . 002 | -- | . 042 |
| B-12 | Mudstone and chert----- | 335-CWT | . 8 | 2. 9 | 83. 8 | 24. 7 | 41. 06 | . 002 | -- | . 044 |
| B-11 | Phosphate rock, argillaceous----- | 334-CWT | . 8 | 16. 5 | 39. 5 | 25. 5 | 54. 26 | . 011 | . 011 | . 053 |
| B-10 | Mudstone----- | 333-CWT | 2. 5 | . 3 | 79. 7 | 28. 0 | 55. 01 | . 003 | -- | . 060 |
| B- 9 | Mudstone, phosphatic and mudstone ----- | 332-CWT | 1. 7 | 8. 3 | 62. 3 | 29. 7 | 69. 12 | . 006 | . 006 | . 070 |
| B- 8 | Mudstone, phosphatic and mudstone ----- | 331-CWT | . 7 | 9. 2 | 51. 8 | 30. 4 | 75. 56 | . 007 | . 006 | . 075 |

¹ Fossil collection made by W. R. Record, Paleontology and Stratigraphy Branch, U. S. Geological Survey.

Little Sheep Creek—Continued

| Bed no. | Rock description | Sample no. | Thickness (feet) | Chemical analyses (percent) | | Cumulative thickness (feet) | Thickness x percent P ₂ O ₅ (cumulative) | Uranium content (percent) | | Thickness x percent eU (cumulative) |
|---------|--|------------|------------------|-------------------------------|----------------|-----------------------------|--|---------------------------|---------|-------------------------------------|
| | | | | P ₂ O ₅ | Acid insoluble | | | eU | Chem. U | |
| B- 7 | Mudstone, phosphatic ----- | 330-CWT | 0.6 | 9.4 | 44.8 | 31.0 | 81.20 | 0.008 | 0.006 | 0.080 |
| B- 6 | Phosphate rock, argillaceous ----- | 329-CWT | 1.3 | 26.5 | 16.0 | 32.3 | 115.65 | .018 | .017 | .104 |
| B- 5 | Mudstone ----- | 328-CWT | 1.4 | 6.4 | 65.3 | 33.7 | 124.61 | .006 | .004 | .112 |
| B- 4 | Phosphate rock, sandy; fos. col. no. 11645 ----- | 327-CWT | 1.5 | 20.3 | 24.3 | 35.2 | 155.06 | .007 | .006 | .122 |
| B- 3 | Phosphate rock ----- | 326-ERC | 1.2 | 33.0 | 1.7 | 36.4 | 194.66 | .008 | .011 | .132 |
| B- 2 | Mudstone and phosphate rock ----- | 325-ERC | .8 | 21.2 | 28.5 | 37.2 | 211.62 | .008 | .008 | .138 |
| B- 1 | Phosphate rock ----- | 324-ERC | 1.5 | 32.4 | 5.0 | 38.7 | 260.22 | .008 | .008 | .150 |

A member of Phosphoria formation, lot 1294—upper part only

| | | | | | | | | | | |
|------|--|---------|------|-----|------|-------|------|-------|----|-------|
| A-29 | Sandstone, calcareous ----- | -- | 6.2 | -- | -- | 6.2 | -- | -- | -- | -- |
| A-28 | Mudstone, dolomitic ----- | -- | 3.0 | -- | -- | 9.2 | -- | -- | -- | -- |
| | Bed A-28 is bounded by faults; it may be the equivalent of bed A-26. | | | | | | | | | |
| A-27 | Carbonate rock ----- | 323-CWT | 10.6 | 0.3 | 1.5 | 19.8 | 3.18 | 0.001 | -- | 0.011 |
| A-26 | Mudstone, carbonatic ----- | 322-ERC | 3.0 | .2 | 55.5 | 22.8 | 3.78 | .002 | -- | .017 |
| A-25 | Carbonate rock ----- | 321-ERC | 4.7 | .1 | 3.7 | 27.5 | 4.25 | .0005 | -- | .019 |
| A-24 | Dolomite and dolomitic siltstone ----- | 320-ERC | 1.3 | .1 | 25.7 | 28.8 | 4.38 | .002 | -- | .022 |
| A-23 | Mudstone, carbonatic ----- | 319-CWT | 6.2 | .2 | 57.1 | 35.0 | 5.62 | .002 | -- | .034 |
| A-22 | Mudstone, carbonatic ----- | 318-CWT | 4.8 | .1 | 63.1 | 39.8 | 6.10 | .002 | -- | .044 |
| A-21 | Mudstone ----- | 317-CWT | 11.2 | .0 | 70.7 | 51.0 | 6.10 | .004 | -- | .088 |
| A-20 | Mudstone ----- | 316-ERC | 13.4 | .0 | 72.3 | 64.4 | 6.10 | .001 | -- | .102 |
| A-19 | Mudstone, carbonatic ----- | 315-ERC | 10.0 | .1 | 64.0 | 74.4 | 7.10 | .002 | -- | .122 |
| A-18 | Mudstone, calcareous, dolomite, and dolomitic mudstone ----- | -- | 3.5 | -- | -- | 77.9 | -- | -- | -- | -- |
| A-17 | Dolomite ----- | -- | 6.3 | -- | -- | 84.2 | -- | -- | -- | -- |
| A-16 | Dolomite, argillaceous and dolomite ----- | -- | 4.5 | -- | -- | 88.7 | -- | -- | -- | -- |
| A-15 | Dolomite; fos. col. no. 11644 ----- | -- | 3.5 | -- | -- | 92.2 | -- | -- | -- | -- |
| A-14 | Dolomite ----- | -- | 7.1 | -- | -- | 99.3 | -- | -- | -- | -- |
| A-13 | Limestone, dolomitic ----- | -- | 5.6 | -- | -- | 104.9 | -- | -- | -- | -- |
| A-12 | Limestone ----- | -- | 3.8 | -- | -- | 108.7 | -- | -- | -- | -- |
| | Bed A-12 is bounded by a fault of unknown displacement. | | | | | | | | | |
| A-11 | Dolomite ----- | -- | 1.8 | -- | -- | 110.5 | -- | -- | -- | -- |
| A-10 | Dolomite; fos. col. no. 11643 ----- | -- | 14.4 | -- | -- | 124.9 | -- | -- | -- | -- |
| A- 9 | Limestone, sandy; fos. col. no. 11642 ----- | -- | 5.5 | -- | -- | 130.4 | -- | -- | -- | -- |

OFFICIAL USE ONLY

OFFICIAL USE ONLY

| | | | | | | | | | | |
|------|---|----|------|----|----|-------|----|----|----|----|
| | Faults of unknown displacement occur between beds A-9 and A-8 and beds A-6 and A-5 below. | | | | | | | | | |
| A- 8 | Dolomite, dolomitic siltstone, and calcareous siltstone | -- | 4.4 | -- | -- | 134.8 | -- | -- | -- | -- |
| A- 7 | Dolomite, calcareous, silty | -- | 1.7 | -- | -- | 136.5 | -- | -- | -- | -- |
| A- 6 | Sandstone, calcareous | -- | 7.4 | -- | -- | 143.9 | -- | -- | -- | -- |
| A- 5 | Sandstone and calcareous sandstone | -- | 9.8 | -- | -- | 153.7 | -- | -- | -- | -- |
| A- 4 | Sandstone and sandy limestone | -- | 10.8 | -- | -- | 164.5 | -- | -- | -- | -- |
| A- 3 | Dolomite, silty | -- | 2.5 | -- | -- | 167.0 | -- | -- | -- | -- |
| A- 2 | Dolomite, mudstone, and silty dolomite; fos. col. no. 11641 | -- | 1.0 | -- | -- | 168.0 | -- | -- | -- | -- |
| A- 1 | Dolomite | -- | 2.1 | -- | -- | 170.1 | -- | -- | -- | -- |

OFFICIAL USE ONLY

OFFICIAL USE ONLY

Crooked Creek, Mont., lots 1296 and 1297

B and D members of Phosphoria formation sampled and parts of A, C, and D members described in two bulldozer trenches near the head of Crooked Creek, SW $\frac{1}{4}$ sec. 1, T. 15 S., R. 8 W., Beaverhead County, Mont., from southeastward-dipping strata near the south end of a large anticlinal structure. Beds A-1 through C-5 described at the upper trench (lot 1296) from beds striking N. 60° E. and dipping 65° SE. Beds C-6 through E-2 described at the lower trench (lot 1297) 350 feet east from overturned beds striking N. 50° E. and dipping 70° NW. D member is so strongly sheared that the thickness and stratigraphic sequence may be incorrect. Section measured by E. R. Cressman and W. H. Wilson and sampled by J. L. Elliott, B. K. Replogle, and W. J. Garmoe in July 1949. Samples analyzed by U. S. Bureau of Mines laboratory, Albany, Oreg.

Samples analyzed for eU and chem. U by the U. S. Geological Survey laboratory, Geochemistry and Petrology Branch.

| Bed no. | Rock description | Sample no. | Thickness (feet) | Chemical analyses (percent) | | Cumulative thickness (feet) | Thickness x percent P ₂ O ₅ (cumulative) ^e | Uranium content (percent) | | Thickness x percent eU (cumulative) |
|--|--|------------|------------------|-------------------------------|----------------|-----------------------------|---|---------------------------|---------|-------------------------------------|
| | | | | P ₂ O ₅ | Acid insoluble | | | eU | Chem. U | |
| E member of Phosphoria formation, lot 1297—lower part only | | | | | | | | | | |
| E- 2 | Mudstone----- | -- | 11.7 | -- | -- | 11.7 | -- | -- | -- | -- |
| E- 1 | Chert, argillaceous----- | 636-WHW | 15.2 | 1.3 | 82.0 | 26.9 | -- | -- | -- | -- |
| D member of Phosphoria formation, lot 1297 | | | | | | | | | | |
| D-21 | Mudstone, phosphatic and mudstone----- | 635- ERC | 2.3 | 4.4 | 65.5 | 2.3 | 10.12 | 0.003 | -- | 0.007 |
| D-20 | Mudstone----- | 634- ERC | 4.3 | 7.4 | 56.1 | 6.6 | 41.94 | .004 | -- | .024 |
| D-19 | Mudstone, phosphatic----- | 633- ERC | 4.3 | 13.7 | 45.8 | 10.9 | 100.85 | .004 | -- | .041 |
| D-18 | Mudstone----- | 632- ERC | 3.5 | 7.5 | 53.9 | 14.4 | 127.10 | .004 | -- | .055 |
| D-17 | Mudstone, carbonatic----- | 631- ERC | 4.8 | 6.5 | 48.0 | 19.2 | 158.30 | .004 | -- | .074 |
| D-16 | Mudstone, carbonatic----- | 630- ERC | 3.8 | 7.1 | 48.3 | 23.0 | 185.28 | .004 | -- | .090 |
| D-15 | Mudstone, carbonatic----- | 629- ERC | 4.3 | 6.4 | 47.3 | 27.3 | 212.80 | .004 | -- | .107 |
| D-14 | Mudstone, carbonatic----- | 628- ERC | 4.0 | 5.5 | 48.3 | 31.3 | 234.80 | .004 | -- | .123 |
| D-13 | Mudstone, carbonatic----- | 627- ERC | 4.2 | 3.6 | 53.1 | 35.5 | 249.92 | .003 | -- | .136 |
| D-12 | Mudstone, carbonatic----- | 626- ERC | 4.4 | 7.5 | 36.0 | 39.9 | 282.92 | .005 | 0.005 | .158 |
| D-11 | Mudstone, carbonatic----- | 625- ERC | 4.5 | 7.6 | 37.4 | 44.4 | 317.12 | .005 | .005 | .180 |
| D-10 | Phosphate rock, argillaceous----- | 624-WHW | 3.5 | 14.5 | 32.9 | 47.9 | 367.87 | .004 | -- | .194 |
| D- 9 | Mudstone, carbonatic----- | 623-WHW | 5.0 | 7.4 | 40.7 | 52.9 | 404.87 | .004 | -- | .214 |
| D- 8 | Carbonate rock, argillaceous, phosphatic----- | 622-WHW | 1.7 | 8.6 | 18.7 | 54.6 | 419.49 | .004 | -- | .221 |
| D- 7 | Mudstone----- | 621-WHW | 3.7 | 5.2 | 59.6 | 58.3 | 438.73 | .003 | -- | .232 |
| D- 6 | Phosphate rock, argillaceous----- | 384-WHW | .8 | 18.3 | 31.3 | 59.1 | 453.37 | .005 | -- | .236 |
| D- 5 | Mudstone, phosphatic----- | 383-WHW | 2.5 | 8.1 | 48.0 | 61.6 | 473.62 | .003 | -- | .243 |
| D- 4 | Mudstone, phosphatic, carbonatic----- | 382- ERC | 1.2 | 8.7 | 45.3 | 62.8 | 484.06 | .004 | -- | .248 |
| D- 3 | Phosphate rock, argillaceous----- | 381- ERC | 1.7 | 18.3 | 35.3 | 64.5 | 515.17 | .006 | .005 | .258 |
| D- 2 | Mudstone, phosphatic mudstone, and phosphate rock----- | 380- ERC | .9 | 13.7 | 47.0 | 65.4 | 527.50 | .006 | .005 | .264 |
| D- 1 | Phosphate rock----- | 379- ERC | 1.6 | 27.9 | 14.3 | 67.0 | 572.14 | .007 | .006 | .276 |

OFFICIAL USE ONLY

OFFICIAL USE ONLY

C member of Phosphoria formation, lots 1296 and 1297—upper and lower parts only

| | | | | | | | | | | |
|------|--|----------|------|------|------|------|----|-------|-------|----|
| | lot 1297 | | | | | | | | | |
| C- 7 | Mudstone ----- | 378- ERC | 1.6 | 4.7 | 68.5 | 1.6 | -- | 0.004 | -- | -- |
| C- 6 | Sandstone, phosphatic----- | 377- ERC | 5.9 | 13.6 | 35.3 | 7.5 | -- | .009 | 0.009 | -- |
| | Fos. col. no. 11694 ¹ 4.0 feet below base of bed C-6. | | | | | | | | | |
| | Unknown stratigraphic interval between beds C-5 and C-6. | | | | | | | | | |
| | lot 1296 | | | | | | | | | |
| C- 5 | Sandstone, dolomitic, and calcareous dolomite----- | -- | 11.9 | -- | -- | 19.4 | -- | -- | -- | -- |
| C- 4 | Chert----- | -- | 3.6 | -- | -- | 23.0 | -- | -- | -- | -- |
| C- 3 | Dolomite, cherty ----- | -- | 9.9 | -- | -- | 32.9 | -- | -- | -- | -- |
| C- 2 | Dolomite, mudstone, and chert ----- | -- | 2.5 | -- | -- | 35.4 | -- | -- | -- | -- |
| C- 1 | Mudstone ----- | 376- ERC | 4.3 | 1.2 | 84.8 | 39.7 | -- | .003 | -- | -- |

B member of Phosphoria formation, lot 1296

| | | | | | | | | | | |
|------|---|----------|-----|------|------|------|--------|-------|-------|-------|
| B-17 | Phosphate rock and mudstone ----- | 375- ERC | 1.1 | 24.5 | 26.0 | 1.1 | 26.95 | 0.002 | -- | 0.002 |
| B-16 | Chert and argillaceous phosphate rock; contains sponge spicules ----- | 374- ERC | 1.1 | 10.9 | 58.8 | 2.2 | 38.94 | .007 | 0.005 | .010 |
| B-15 | Chert----- | 373- ERC | 5.4 | .3 | 89.0 | 7.6 | 40.56 | .001 | -- | .015 |
| B-14 | Chert----- | 372- ERC | 3.7 | .3 | 89.8 | 11.3 | 41.67 | .001 | -- | .019 |
| B-13 | Chert----- | 371- ERC | 5.5 | 1.0 | 87.5 | 16.8 | 47.17 | .002 | -- | .030 |
| B-12 | Phosphate rock, cherty and phosphate rock ----- | 370- ERC | .6 | 23.1 | 28.0 | 17.4 | 61.03 | .001 | -- | .031 |
| B-11 | Mudstone ----- | 369- ERC | 1.9 | .5 | 80.8 | 19.3 | 61.98 | .003 | .002 | .036 |
| B-10 | Carbonate rock, argillaceous ----- | 368- ERC | 1.3 | .0 | 36.5 | 20.6 | 61.98 | .001 | -- | .038 |
| B- 9 | Mudstone and phosphatic mudstone----- | 367- ERC | 1.1 | 5.9 | 59.7 | 21.7 | 68.47 | .005 | .004 | .043 |
| B- 8 | Mudstone, carbonatic ----- | 366- ERC | 2.3 | 2.1 | 64.5 | 24.0 | 73.30 | .002 | -- | .048 |
| B- 7 | Mudstone, carbonatic, and phosphatic mudstone ----- | 365- ERC | 1.3 | 5.8 | 49.7 | 25.3 | 80.84 | .004 | -- | .053 |
| B- 6 | Mudstone, phosphatic, carbonatic ----- | 364- ERC | .8 | 7.9 | 46.5 | 26.1 | 87.16 | .004 | -- | .056 |
| B- 5 | Phosphate rock ----- | 363- ERC | .5 | 27.1 | 11.6 | 26.6 | 100.71 | .020 | -- | .066 |
| B- 4 | Mudstone, carbonatic ----- | 362- ERC | 1.2 | 6.4 | 38.0 | 27.8 | 108.39 | .005 | .004 | .072 |
| B- 3 | Mudstone, carbonatic ----- | 361- ERC | .6 | 3.9 | 58.0 | 28.4 | 110.73 | .004 | -- | .074 |
| B- 2 | Phosphate rock; fos. col. no. 11693 ----- | 360- ERC | 1.5 | 31.2 | 6.2 | 29.9 | 157.53 | .016 | .016 | .098 |
| B- 1 | Phosphate rock; fos. col. no. 11692 ----- | 359- ERC | .5 | 27.3 | 17.2 | 30.4 | 171.18 | .007 | .007 | .102 |

¹

Fossil collection made by W. R. Record, Paleontology and Stratigraphy Branch, U. S. Geological Survey.

OFFICIAL USE ONLY

OFFICIAL USE ONLY

Crooked Creek—Continued

| Bed no. | Rock description | Sample no. | Thickness (feet) | Chemical analyses (percent) | | Cumulative thickness (feet) | Thickness x percent P ₂ O ₅ (cumulative) | Uranium content (percent) | | Thickness x percent eU (cumulative) |
|--|------------------------------------|------------|------------------|-------------------------------|----------------|-----------------------------|--|---------------------------|---------|-------------------------------------|
| | | | | P ₂ O ₅ | Acid insoluble | | | eU | Chem. U | |
| A member of Phosphoria formation, lot 1296 | | | | | | | | | | |
| A-24 | Sandstone, dolomitic----- | -- | 3.3 | -- | -- | 3.3 | -- | -- | -- | -- |
| A-23 | Dolomite ----- | -- | .5 | -- | -- | 3.8 | -- | -- | -- | -- |
| A-22 | Dolomite, cherty----- | -- | .6 | -- | -- | 4.4 | -- | -- | -- | -- |
| A-21 | Dolomite ----- | -- | 3.3 | -- | -- | 7.7 | -- | -- | -- | -- |
| A-20 | Dolomite, silty----- | -- | 8.9 | -- | -- | 16.6 | -- | -- | -- | -- |
| A-19 | Dolomite, calcareous----- | -- | 10.0 | -- | -- | 26.6 | -- | -- | -- | -- |
| A-18 | Dolomite ----- | -- | 6.3 | -- | -- | 32.9 | -- | -- | -- | -- |
| A-17 | Dolomite ----- | -- | 1.6 | -- | -- | 34.5 | -- | -- | -- | -- |
| A-16 | Mudstone ----- | -- | .9 | -- | -- | 35.4 | -- | -- | -- | -- |
| A-15 | Dolomite, calcareous----- | -- | 3.3 | -- | -- | 38.7 | -- | -- | -- | -- |
| A-14 | Siltstone, dolomitic----- | -- | 4.5 | -- | -- | 43.2 | -- | -- | -- | -- |
| A-13 | Dolomite; fos. col. no. 11690----- | -- | 5.0 | -- | -- | 48.2 | -- | -- | -- | -- |
| A-12 | Mudstone, dolomitic----- | -- | 5.8 | -- | -- | 54.0 | -- | -- | -- | -- |
| A-11 | Mudstone, dolomitic----- | -- | 6.3 | -- | -- | 60.3 | -- | -- | -- | -- |
| A-10 | Sandstone, calcareous----- | -- | 8.0 | -- | -- | 68.3 | -- | -- | -- | -- |
| A-9 | Sandstone, dolomitic----- | -- | 10.6 | -- | -- | 78.9 | -- | -- | -- | -- |
| A-8 | Dolomite ----- | -- | 7.2 | -- | -- | 86.1 | -- | -- | -- | -- |
| A-7 | Dolomite ----- | -- | 7.4 | -- | -- | 93.5 | -- | -- | -- | -- |
| A-6 | Dolomite, sandy----- | -- | 14.1 | -- | -- | 107.6 | -- | -- | -- | -- |
| A-5 | Sandstone, dolomitic----- | -- | 7.5 | -- | -- | 115.1 | -- | -- | -- | -- |
| A-4 | Sandstone, dolomitic----- | -- | 6.0 | -- | -- | 121.1 | -- | -- | -- | -- |
| A-3 | Covered interval----- | -- | 10.0 | -- | -- | 131.1 | -- | -- | -- | -- |
| A-2 | Dolomite ----- | -- | 12.5 | -- | -- | 143.6 | -- | -- | -- | -- |
| A-1 | Sandstone, dolomitic----- | -- | 13.2 | -- | -- | 156.8 | -- | -- | -- | -- |
| | Covered to Quadrant contact----- | -- | 10.0 | -- | -- | 166.8 | -- | -- | -- | -- |

OFFICIAL USE ONLY

OFFICIAL USE ONLY

Camp Frigid, Mont., lot 1343

B member of Phosphoria formation measured and sampled at natural exposure $\frac{1}{2}$ mile northeast of Camp Frigid, SW $\frac{1}{4}$ sec. 34, T. 14 S., R. 1 W., Beaverhead County, Mont., by B. K. Replogle in September 1950. Samples analyzed for P₂O₅ and acid insoluble by U. S. Bureau of Mines laboratory, Albany, Oreg., and for other constituents by Trace Elements Section laboratory, U.S. Geological Survey, Washington, D. C.

Samples analyzed for eU and chem. U by the U. S. Geological Survey laboratory, Geochemistry and Petrology Branch.

| Bed no. | Rock description | Sample no. | Thickness (feet) | Chemical analyses (percent) | | | | | Cumulative thickness (feet) | Thickness x percent P ₂ O ₅ (cumulative) | Uranium content (percent) | | Thickness x percent eU (cumulative) |
|---|---|------------|------------------|-------------------------------|--------------------------------|--------------------------------|------------------|----------------|-----------------------------|--|---------------------------|---------|-------------------------------------|
| | | | | P ₂ O ₅ | Al ₂ O ₃ | Fe ₂ O ₃ | Loss on ignition | Acid insoluble | | | eU | Chem. U | |
| C member of Phosphoria formation—not measured | | | | | | | | | | | | | |
| B member of Phosphoria formation | | | | | | | | | | | | | |
| B-7 | Sandstone and carbonate rock ----- | 5561-BKR | 1.0 | 4.7 | -- | -- | -- | 62.2 | 1.0 | -- | 0.002 | -- | -- |
| B-6 | Phosphate rock ----- | 5560-BKR | .7 | 32.4 | -- | -- | -- | 7.0 | 1.7 | -- | .012 | 0.013 | -- |
| B-5 | Covered interval; some phosphate rock in float ----- | -- | 9.0 | -- | -- | -- | -- | -- | 10.7 | -- | -- | -- | -- |
| B-4 | Phosphate rock ----- | 5559-BKR | 1.8 | 33.9 | 0.24 | 0.28 | 4.30 | 2.8 | 12.5 | 61.02 | .016 | .018 | 0.029 |
| B-3 | Phosphate rock ----- | 5558-BKR | 2.2 | 33.4 | .83 | .38 | 3.45 | 6.3 | 14.7 | 134.50 | .015 | .012 | .062 |
| B-2 | Carbonate rock, sandy ----- | 5557-BKR | 1.8 | 3.7 | .10 | .43 | 24.01 | 39.7 | 16.5 | 141.16 | .002 | -- | .065 |
| B-1 | Phosphate rock ----- | 5556-BKR | 2.4 | 31.0 | .28 | .43 | 5.68 | 9.3 | 18.9 | 215.56 | .007 | .009 | .082 |
| A member of Phosphoria formation—top bed only | | | | | | | | | | | | | |
| A-1 | Carbonate rock ----- | -- | 2.5 | -- | -- | -- | -- | -- | 2.5 | -- | -- | -- | -- |

OFFICIAL USE ONLY

OFFICIAL USE ONLY