

# **NetpathXL—An Excel<sup>®</sup> Interface to the Program NETPATH**

Techniques and Methods 6-A26

# **NetpathXL—An Excel<sup>®</sup> Interface to the Program NETPATH**

By David L. Parkhurst and Scott R. Charlton

Techniques and Methods 6-A26

**U.S. Department of the Interior  
U.S. Geological Survey**

**U.S. Department of the Interior**  
DIRK KEMPTHORNE, Secretary

**U.S. Geological Survey**  
Mark D. Myers, Director

U.S. Geological Survey, Reston, Virginia: 2008

**About USGS Products**

*For product and ordering information:*

World Wide Web: <http://www.usgs.gov/pubprod>

Telephone: 1-888-ASK-USGS

*For more information on the USGS—the Federal source for science about the Earth, its natural and living resources, natural hazards, and the environment:*

World Wide Web: <http://www.usgs.gov>

Telephone: 1-888-ASK-USGS

**About this Product**

*For more information concerning this publication, contact:*

Chief, Branch of Regional Research, Central Region, WRD

Box 25046

Denver Federal Center

MS 418

Denver, CO 80225-0046

(303) 236-5344

*Or visit the Central Region Branch of Regional Research Web site at:*

<http://www.brr.cr.usgs.gov>

This publication is available online at:

<http://pubs.usgs.gov/tm/tm6a26>

*Publishing support provided by:*

Denver Publishing Service Center, Denver, Colorado

Manuscript approved for publication, January 2008

Edited by Jon W. Raese

Layout by Margo VanAlstine

Suggested citation:

Parkhurst, D.L., and Charlton, S.R., 2008, NetpathXL—An Excel® interface to the program NETPATH: U.S. Geological Survey Techniques and Methods 6-A26, 11 p.

Any use of trade, product, or firm names is for descriptive purposes only and does not imply endorsement by the U.S. Government.

Although this report is in the public domain, permission must be secured from the individual copyright owners to reproduce any copyrighted materials contained within this report.

## Contents

Abstract .....	1
Introduction.....	1
NetpathXL.....	2
Installing DBXL and NetpathXL .....	3
Using DBXL .....	3
Using NetpathXL .....	3
Summary and Conclusions .....	6
References Cited.....	6
Appendix 1. NetpathXL Spreadsheet File.....	8
Appendix 2. Coding methods.....	10
Appendix 3. Interfacing with PHREEQC.....	11

## Figures

1–5. Screen images showing:	
1. Options screen for DBXL.....	3
2. File browser using DBXL option 3.....	4
3. Options screen for NetpathXL.....	4
4. Edit screen for NetpathXL.....	5
5. Selecting the edit screen from the main screen of NetpathXL .....	5

## Tables

1. Description of cells in a NetpathXL spreadsheet file.....	8
--	---

# NetpathXL—An Excel<sup>®</sup> Interface to the Program NETPATH

By David L. Parkhurst and Scott R. Charlton

## Abstract

NetpathXL is a revised version of NETPATH that runs under Windows<sup>®</sup> operating systems. NETPATH is a computer program that uses inverse geochemical modeling techniques to calculate net geochemical reactions that can account for changes in water composition between initial and final evolutionary waters in hydrologic systems. The inverse models also can account for the isotopic composition of waters and can be used to estimate radiocarbon ages of dissolved carbon in ground water. NETPATH relies on an auxiliary, database program, DB, to enter the chemical analyses and to perform speciation calculations that define total concentrations of elements, charge balance, and redox state of aqueous solutions that are then used in inverse modeling. Instead of DB, NetpathXL relies on Microsoft Excel<sup>®</sup> to enter the chemical analyses. The speciation calculation formerly included in DB is implemented within the program NetpathXL. A program DBXL can be used to translate files from the old DB format (*.lon* files) to NetpathXL spreadsheets, or to create new NetpathXL spreadsheets. Once users have a NetpathXL spreadsheet with the proper format, new spreadsheets can be generated by copying or saving NetpathXL spreadsheets. In addition, DBXL can convert NetpathXL spreadsheets to PHREEQC input files. New capabilities in PHREEQC (version 2.15) allow solution compositions to be written to a *.lon* file, and inverse models developed in PHREEQC to be written as NetpathXL *.pat* and model files. NetpathXL can open NetpathXL spreadsheets, NETPATH-format path files (*.pat* files), and NetpathXL-format path files (*.pat* files). Once the speciation calculations have been performed on a spreadsheet file or a *.pat* file has been opened, the NetpathXL calculation engine is identical to the original NETPATH. Development of models and viewing results in NetpathXL rely on keyboard entry as in NETPATH.

## Introduction

NETPATH (Plummer and others, 1991, 1994) is an interactive Fortran 77 computer program used to interpret net geochemical mass-balance reactions between initial (or multiple initial waters that mix) and final waters along real or hypothetical flow paths in aquifers or other hydrologic systems. The program uses inverse geochemical modeling techniques (Plummer and others, 1983; Plummer 1985; Parkhurst and Plummer, 1993; Glynn and Brown, 1996; Nordstrom, 2007) to construct geochemical reaction models by using chemical and isotopic data for waters from the hydrochemical system. The inverse model is a set of mixing fractions and mole transfers that exactly account for the changes in concentration of elements in the waters. Inverse models between selected evolutionary waters are found for every possible combination of the plausible phases that can account for the composition of a selected set of chemical and isotopic constraints in the system. The processes of dissolution, precipitation, ion exchange, oxidation/reduction, degradation of organic compounds, incongruent reaction, gas exchange, mixing, evaporation, and dilution are included. It also is possible to account for changes in isotopic compositions of six elements: hydrogen (deuterium and tritium) and oxygen isotopic evolution is accounted for by mixing of waters (no fractionation or mineral mass transfer); carbon (carbon-13 and carbon-14), sulfur, nitrogen, and strontium isotopic evolution is accounted for by mixing, mineral mass transfer, isotopic fractionation, and isotopic exchange. Finally, the inverse models can be used to adjust radiocarbon data for geochemical reaction effects and to refine estimates of radiocarbon age. The NETPATH software includes a data-base program, DB, for storing and editing chemical and isotopic data for use in NETPATH.

## 2 NetpathXL—An Excel® Interface to the Program NETPATH

NETPATH has been used to investigate geochemical and isotopic reactions in a large number of hydrologic systems for more than 15 years (see for example: Plummer and others, 1990; Aravena and others, 1995; Plummer and Sprinkle, 2001). The modeling concepts in NETPATH can be traced to geochemical mass-balance calculations originally demonstrated by Garrels and Mackenzie (1967) and have evolved through a series of theoretical (Plummer and Back, 1980; Plummer and others, 1983; Plummer, 1992; Glynn and Plummer, 2005; Parkhurst, 1997) and software contributions (Plummer and others, 1975; Parkhurst and others, 1982; Plummer and others, 1991, 1992, 1994).

More recently, inverse geochemical modeling has been built into the geochemical model PHREEQC (Parkhurst and Appelo, 1999) and its graphical user interface Phreeqcl (Charlton and Parkhurst, 2002) and into a spreadsheet program, SpreadBal (Bowser and Jones, 2002a, 2002b). Advantages and limitations of the NETPATH and Phreeqcl inverse modeling capabilities are discussed in Glynn and Brown (1996) and Glynn and Plummer (2005). NETPATH, PHREEQC (and Phreeqcl), and SpreadBal are all capable of performing basic inverse modeling. The strengths of each program are as follows: NETPATH allows for isotope fractionation, radiocarbon dating, isotope mole balance, and redox processes. PHREEQC considers uncertainties in analytical data for elements and isotopes; it considers redox processes and isotope mole balance, but not isotope fractionation or radiocarbon dating. SpreadBal primarily is designed for aluminosilicate and clay reactions, with special emphasis on the variable compositions of these minerals.

The data entry program for NETPATH, DB, requires editing data one piece at a time. DB saves data in two formats: the *.lon* file contains the raw concentration data and the *.pat* file contains selected results from speciation calculations performed by DB (total concentrations of elements, redox state, and isotopic compositions). NETPATH reads the *.pat* file to obtain the data needed for inverse modeling.

Since the original publication of NETPATH, advances in computer technology permit replacement of the DB data-entry style with the universally familiar spreadsheet. NetpathXL is a revised version of NETPATH that can read an Excel spreadsheet that contains the concentration data (Appendix 1). The speciation calculation, formerly in the program DB, has been moved to the program NetpathXL. Each time NetpathXL reads a NetpathXL spreadsheet, speciation calculations are performed and a *.pat* file is written; although the format of a *.pat* file written by NetpathXL differs from one written by DB, NetpathXL can read data from a *.pat* file created by either DB or NetpathXL.

DBXL has a feature that allows exporting solution composition data from the NetpathXL spreadsheet to a format that can be read by PHREEQC. In addition, capabilities have been added to PHREEQC to export solution compositions to DBXL (*.lon* file) and to export inverse models to NetpathXL (*.pat* and model files).

The purpose of this report is to document the programs DBXL and NetpathXL. In addition, the report describes new features added to PHREEQC that allow solution composition data and inverse models to be exported to NetpathXL. The report describes how to install and use the DBXL and NetpathXL, the format of the Excel spreadsheet created by DBXL and used by NetpathXL, the capability of DBXL to export data from a NetpathXL spreadsheet for use in PHREEQC, and the capability of PHREEQC to export data and inverse models for use in NetpathXL.

## NetpathXL

The NetpathXL spreadsheet has a fixed set of columns and header rows (see Appendix 1, table 1). The program DBXL generates a spreadsheet of the proper format, into which concentration and isotopic data can be entered. DBXL also can translate a *.lon* file [written by NETPATH or PHREEQC (version 2.15 or later)] to a NetpathXL spreadsheet. Additional NetpathXL spreadsheets can be generated by copying old spreadsheets and clearing the concentration data. New chemical and isotopic data can be entered cell-by-cell or copied and pasted from other spreadsheets or files into NetpathXL spreadsheets. The calculation engine for NetpathXL is identical to NETPATH. Although the screen-painting data entry for NetpathXL appears identical to NETPATH, new routines are used that avoid the need for the *ansi.sys* device required by NETPATH (Appendix 2).

New capabilities have been added to facilitate the interchange of data between PHREEQC and NetpathXL. DBXL can read the data from a NetpathXL spreadsheet and write a file with all of the solution definitions that is readable by PHREEQC (*.pqi* file). Thus, PHREEQC can be used to calculate inverse models or forward models by using data that were entered for NetpathXL. In addition, PHREEQC (version 2.15 and later) can write files that are readable by DBXL and NetpathXL. The solution data defined in PHREEQC (**SOLUTION**, **SOLUTION\_SPREAD**, and **SAVE solution**) can be written to a *.lon* file by using the `-lon_netpath` identifier in the **INVERSE\_MODELING** data block. This file can be read by DBXL and converted into a NetpathXL spreadsheet. In addition, PHREEQC inverse models can be saved as *.pat* and model files by using the `-pat_netpath` identifier in the **INVERSE\_MODELING** data block. PHREEQC adjusts concentrations in the process of finding inverse models. The *.pat* file written by PHREEQC contains these adjusted concentrations for each solution for each model, and each model is written to a NetpathXL model file, which can be read by NetpathXL. By using these files, NetpathXL can reproduce exactly a PHREEQC inverse model. This capability is useful, for example, if inverse model development is done in PHREEQC, but radiocarbon-age dating is done with NetpathXL.

## Installing DBXL and NetpathXL

DBXL and NetpathXL use Microsoft Excel to store and retrieve data. Excel must be accessible on the computer on which NetpathXL and DBXL are installed.

The latest versions of the programs can be downloaded from the web site [http://wwwbrr.cr.usgs.gov/projects/GWC\\_coupled/netpath](http://wwwbrr.cr.usgs.gov/projects/GWC_coupled/netpath). The file will have the extension *.msi*, and can be installed by using the Windows Installer, which is available automatically in Windows XP and higher. As administrator, simply double-click on the downloaded *.msi* file. The programs will be installed in the *C:\Program Files* directory by default. It is possible to install as a nonadministrator if a different directory is selected. Once installed, the programs can be run through the Start Menu at the bottom left corner of the screen.

The programs normally are installed in the directory *c:\Program Files\USGS\NetpathXL*. Within this directory are subdirectories: *bin*, which contains the executables for NetpathXL and DBXL; *database*, which contains the database for the speciation model, *db.dat*, and the database of mineral stoichiometries, *netpath.dat*; *doc*, which contains PDF versions of this report and the documentation for NETPATH (Plummer and others, 1994); and *examples*, which contains the data and model files for the examples described in the NETPATH documentation (Plummer and others, 1994).

## Using DBXL

DBXL can be executed from the Windows start menu at the bottom left of the screen or by browsing for the executable file (*c:\Program Files\USGS\NetpathXL\bin\dbxl.exe*) and double-clicking with the mouse. The user may want to add a desktop icon by right-clicking on the start-menu item or the executable file (Send To->Desktop). When the program starts, a screen (fig. 1) appears that has five options: (1) create a NetpathXL spreadsheet from a *.lon* file that has been written by DB, (2) open a NetpathXL spreadsheet (*.xls* suffix), (3) create a new (empty) NetpathXL spreadsheet, (4) create a PHREEQC

input file (*.pqi*) from a NetpathXL spreadsheet file, or (5) exit DBXL. Options are selected by typing 1, 2, 3, 4, or 5 followed by enter. Selecting options 1, 2, 3, or 4 will start the standard Windows file browser to select the file to be read or to specify the name of the new NetpathXL spreadsheet (fig. 2). For options 1, 2, and 3, after a file has been selected, an Excel session will be started, and DBXL will close. For option 4, after a file has been selected, a PHREEQC *.pqi* file will be written, after which, DBXL will close (Appendix 3). Other functionality of DB, including “Check” charge balance and “Print” data reports was not retained in DBXL.

## Using NetpathXL

NetpathXL can be executed from the Windows start menu at the bottom left of the screen or by browsing for the executable file (*c:\Program Files\USGS\NetpathXL\bin\netpathxl.exe*) and double-clicking with the mouse. The user may want to add a desktop icon by right-clicking on the start-menu item or the executable file (Send To->Desktop). When the program starts, a screen (fig. 3) appears that has three options: (1) open an existing NetpathXL spreadsheet (*.xls* suffix), (2) open a *.pat* file created by DB or NetpathXL, or (3) quit NetpathXL. Options are selected by typing 1, 2, or 3 followed by enter. After option 1 or 2 is selected, the standard Windows file browser is used to select a file. After a file has been selected, execution will be the same as the program NETPATH (except for one additional file-reading option); all options and data entry are by keystrokes, and the mouse is not functional except to give focus to the NetpathXL window. The working directory will be the directory that contains the file selected by the file browser.

If a NetpathXL spreadsheet is selected (option 1), a speciation calculation will be performed. A database file named *db.dat* is required for this speciation calculation. The default database file is found in the *database* subdirectory of the installation directory (*c:\Program Files\USGS\NetpathXL\database\db.dat*).

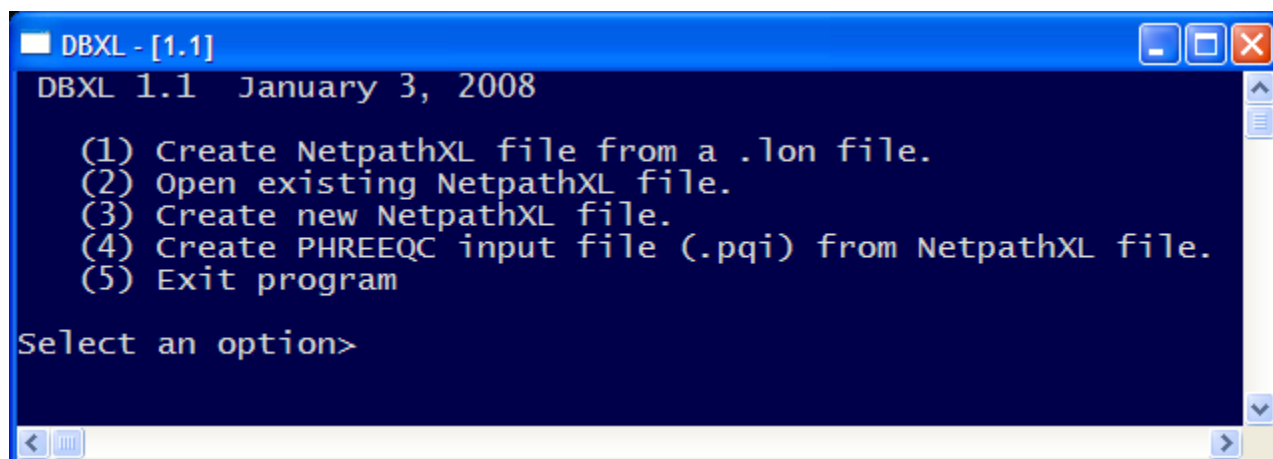


Figure 1. Options screen for DBXL.

4 NetpathXL—An Excel® Interface to the Program NETPATH

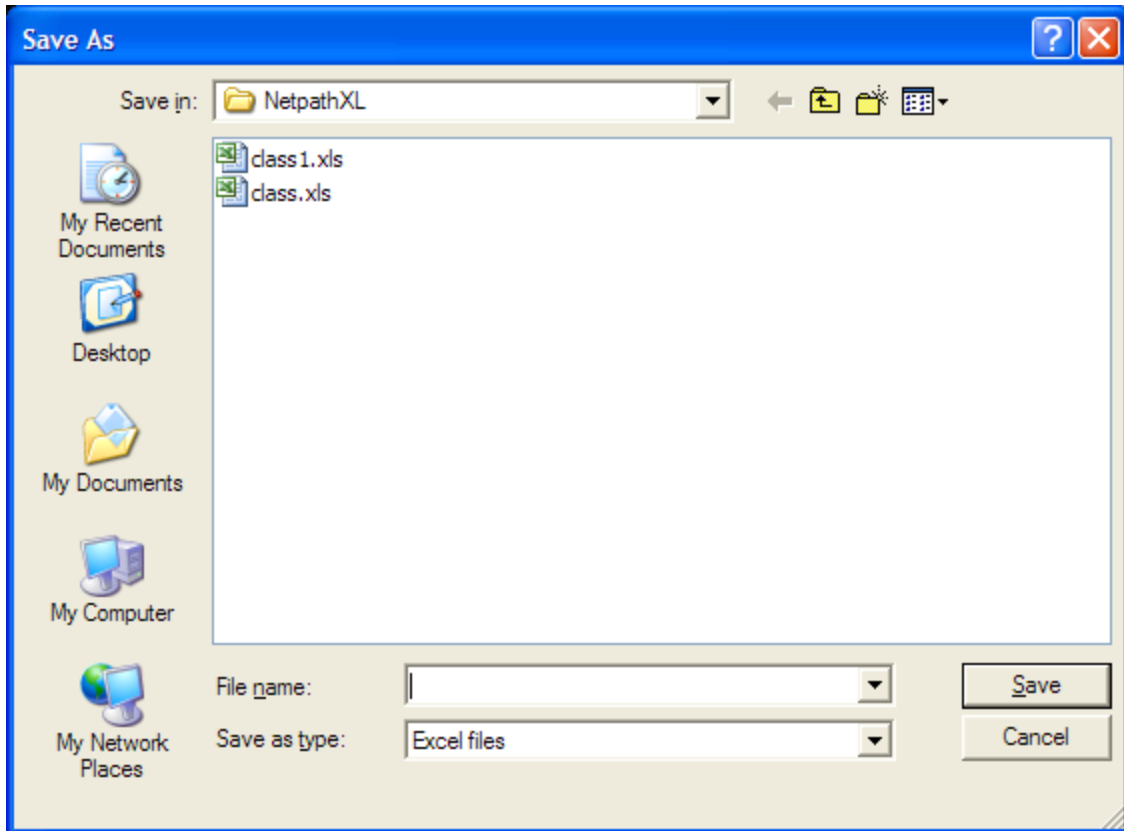


Figure 2. File browser using DBXL option 3.

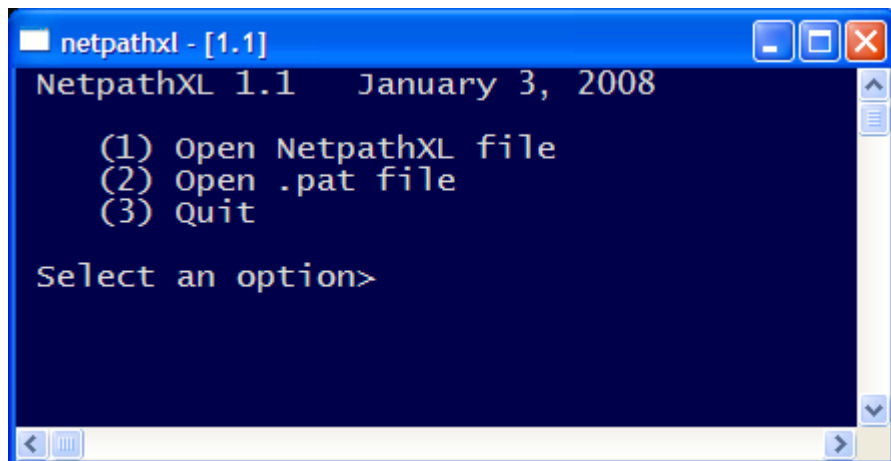


Figure 3. Options screen for NetpathXL.

Another file, *netpath.dat*, contains the stoichiometry and isotopic composition of minerals, which are needed for inverse modeling calculations. NetpathXL will look for this file in the working directory (the directory containing the file read at startup). If it is not found in the working directory, the file will be copied from the database subdirectory of the installation directory (*c:\Program Files\USGS\NetpathXL\database\ netpath.dat*).

If a NetpathXL spreadsheet is read, one additional option is added to the edit screen that was not in the original NETPATH program. The first option of the edit screen is now “1) Reread Excel file” (fig. 4), which is not available in NETPATH. (The edit screen is invoked by typing “E” or “e” on the main screen of NetpathXL, fig. 5.) This option will reread the last NetpathXL spreadsheet and perform speciation calculations

by using the same options (charge-balance option and database file) that were used when the NetpathXL spreadsheet was originally read. (To reread the Excel file, but use different options, select the option “Well file,” which will query for each option.) The current inverse model—wells, phases, constraints, and other options—is retained when the NetpathXL spreadsheet is reread. By using the reread option, concentration or isotopic data can be revised in the NetpathXL spreadsheet and then quickly imported into NetpathXL. Typically, the Excel spreadsheet will be left open and the reread option will be used whenever changes are made to the spreadsheet. Note that the changes to the spreadsheet must be saved (File->Save within Excel) before the spreadsheet is reread. The capability to view Excel while running NetpathXL replaces the <V>iew option of the main screen of NETPATH.

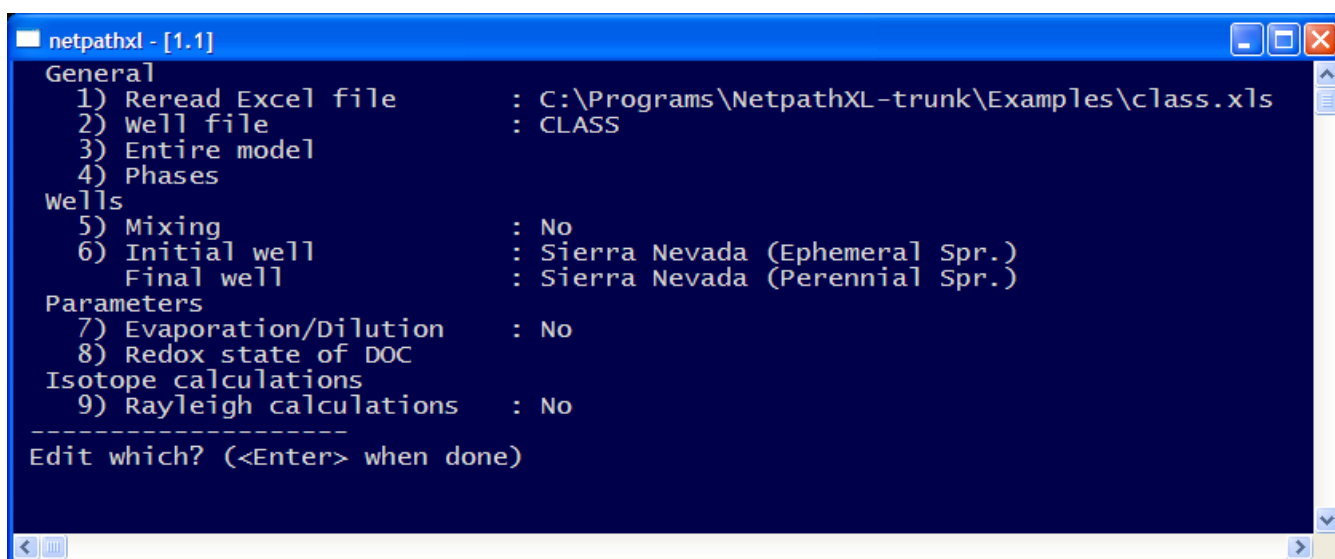


Figure 4. Edit screen for NetpathXL.

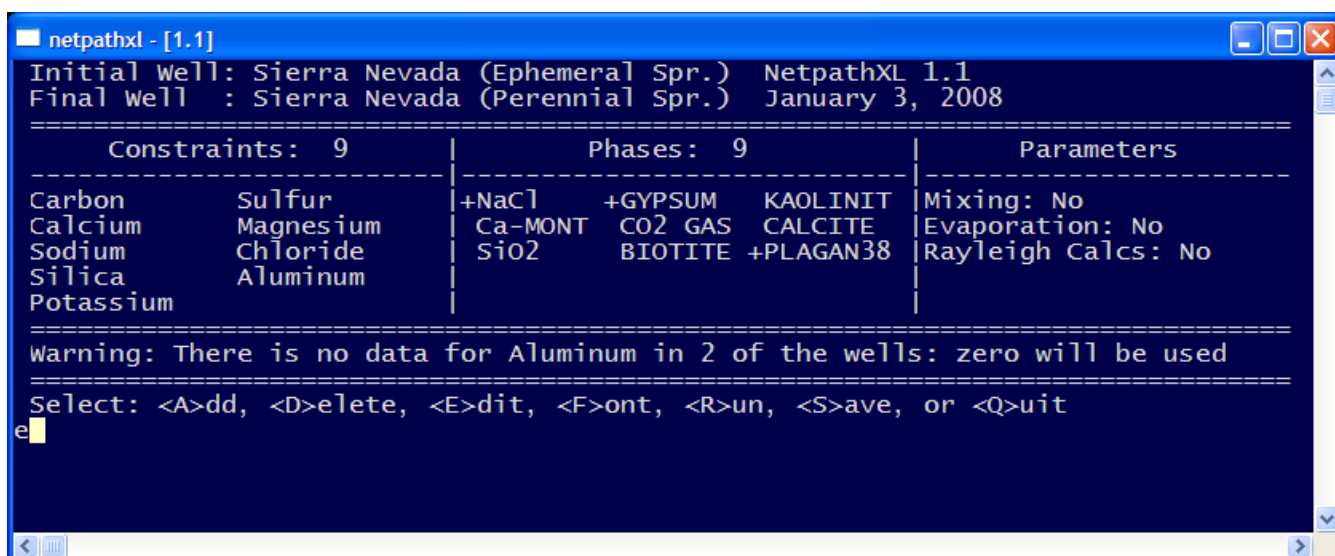


Figure 5. Selecting the edit screen from the main screen of NetpathXL.

One additional option (<F>ont) has been added to the main screen (fig. 5). Typing “F” at the main-screen prompt will result in queries for font height, font brightness, and background brightness. The default font size is 16; specifying a smaller or larger number (8 to 24) correspondingly will decrease or increase the font size used for painting the screens in NetpathXL. The default font brightness is 0.85; decreasing or increasing the number (0.3 to 1.0) correspondingly will dim or brighten the font. The default background brightness is 0.25 (midnight blue); a value of 0 will produce a black background, and a value of 1.0 will produce a bright blue background.

## Summary and Conclusions

NETPATH is unique in the capabilities it provides for geochemical inverse modeling and radiocarbon dating of ground waters. NetpathXL is a partial modernization of the program NETPATH. NetpathXL simplifies data input by using a fixed-format Excel spreadsheet in place of the program DB. File browsing, installation, and concentration data input have the look and feel of current computer programs. The model-development process remains unchanged from that of NETPATH and requires keyboard input rather than point and click technology. However, keyboard input is efficient and the model-development process is simple and straightforward. The calculation engine in NetpathXL is identical to NETPATH.

New capabilities have been added to allow the interchange of data from NetpathXL to PHREEQC and from PHREEQC to NetpathXL. DBXL can translate a NetpathXL spreadsheet file to PHREEQC format (.*pqi*). PHREEQC can translate solution compositions to a NetpathXL .*lon* file. In addition, each inverse model derived by PHREEQC can be written to NetpathXL .*pat* and model files, which allows the PHREEQC inverse model to be reproduced in NetpathXL.

## References Cited

- Aravena, R., Wassenaar, L.I., and Plummer, L.N., 1995, Estimating C-14 groundwater ages in a methanogenic aquifer: *Water Resources Research*, v. 31, p. 2307–2317.
- Bowser, C.J., and Jones, B.F., 2002a, Mineralogic controls on the composition of natural waters dominated by silicate hydrolysis: *American Journal of Science*, v. 302, p. 582–662.
- Bowser, C.J., and Jones, B.F., 2002b, Mineral mass balance documentation for SPREADBAL-2002: accessed January 24, 2008, at <http://water.usgs.gov/software/SPREADBAL-2002>.
- Charlton, S.R., and Parkhurst, D.L., 2002, PhreeqcI—A graphical user interface to the geochemical model PHREEQC: U.S. Geological Survey Fact Sheet FS-031-02, 2 p., accessed January 24, 2008, at <http://pubs.er.usgs.gov/usgspubs/fs/fs03102>.
- Garrels, R.M., and Mackenzie, F.T., 1967, Origin of the chemical compositions of some springs and lakes, *in* Equilibrium concepts in natural water systems: American Chemical Society, *Advances in Chemistry Series*, no. 67: Washington, D.C., chap. 10, p. 222–242.
- Glynn, P.D., and Brown, J.G., 1996, Reactive transport modeling of acidic metal-contaminated ground water at a site with sparse spatial information, *in* Reactive transport in porous media—General principles and application to geochemical processes, *Reviews in Mineralogy*, Steefel, C.I., Lichtner, P., and Oelkers, E., eds.: Mineralogical Society of America, v. 34, chap. 9, p. 377–438.
- Glynn, P.D., and Plummer, L.N., 2005, Geochemistry and the understanding of ground-water systems: *Hydrogeology Journal*, v. 13, p. 263–287.
- Nordstrom, D.K., 2007, Modeling low-temperature geochemical processes, *in* Drever, J.I., ed., *Treatise on Geochemistry*, Volume 5—Surface and ground water, weathering and soils: Elsevier, p. 1–38.
- Parkhurst, D.L., 1997, Geochemical mole-balance modeling with uncertain data: *Water Resources Research*, v. 33, no. 8, p. 1957–1970.
- Parkhurst, D. L., and Appelo, C.A.J., 1999, User’s guide to PHREEQC (Version 2) —A computer program for speciation, batch-reaction, one-dimensional transport, and inverse geochemical calculations: U.S. Geological Survey Water-Resources Investigations Report 99-4259, 312 p.
- Parkhurst, D.L., and Plummer, L.N., 1993, Geochemical models, *in* Alley, W.M., ed., *Regional Ground-Water Quality*: Van Nostrand Reinhold, chap. 9, p. 199–225.
- Parkhurst, D.L., Plummer, L.N., and Thorstenson, D.C., 1982, BALANCE, A computer program for calculating mass transfer for geochemical reactions in ground water: U.S. Geological Survey Water-Resources Investigations Report 82-14, 29 p.
- Plummer, L.N., 1985, Geochemical modeling—A comparison of forward and inverse methods, *in* Hitchon, B., and Wallick, E.I., eds., *Canadian/American Conference on Hydrogeology*, 1<sup>st</sup>, Banff, Alberta, June 1984, *Proceedings: National Water Well Association*, p. 149–177.

- Plummer, L.N., 1992, Geochemical modeling— Past, present, future, *in* Kharaka, Y., and Maest, A.S., eds., International Symposium on Water-rock Interaction, 7<sup>th</sup>, Park City, Utah, July 9–23, 1992, Proceedings: Rotterdam, Balkema, p. 23–33.
- Plummer, L.N., and Back, William, 1980, The mass balance approach—Application to interpreting the chemical evolution of hydrologic systems: *American Journal of Science*, v. 280, p. 30–142.
- Plummer, L.N., Busby, J.F., Lee, R.W., and Hanshaw, B.B., 1990, Geochemical modeling of the Madison aquifer in parts of Montana, Wyoming, and South Dakota: *Water Resources Research*, v. 26, no. 9, p. 1981–2014.
- Plummer, L.N., Parkhurst, D.L., and Kosiur, D.R., 1975, MIX2: A computer program for modeling chemical reactions in natural waters: U.S. Geological Survey Water-Resources Investigations Report 75-61, 68 p., accessed January 24, 2008, at <http://pubs.er.usgs.gov/usgspubs/wri/wri7561>.
- Plummer, L.N., Parkhurst, D.L., and Thorstenson, D.C., 1983, Development of reaction models for ground-water systems: *Geochimica et Cosmochimica Acta*, v. 47, p. 665–686.
- Plummer, L.N., Prestemon, E.C., and Parkhurst, D.L., 1991, An interactive code (NETPATH) for modeling NET geochemical reactions along a flow PATH: U.S. Geological Survey Water-Resources Investigations Report 91-4078, 227 p., accessed January 24, 2008, at <http://pubs.er.usgs.gov/usgspubs/wri/wri914078>.
- Plummer, L.N., Prestemon, E.C., and Parkhurst, D.L., 1992, NETPATH: An interactive code for interpreting NET geochemical reactions from chemical and isotopic data along a flow PATH, *in* Kharaka, Y., and Maest, A.S., eds., International Symposium on Water-rock Interaction, 7<sup>th</sup>, Park City, Utah, July 9–23, 1992, Proceedings: Rotterdam, Balkema, p. 239–242.
- Plummer, L.N., Prestemon, E.C., and Parkhurst, D.L., 1994, An interactive code (NETPATH) for modeling NET geochemical reactions along a flow PATH, version 2.0: U.S. Geological Survey Water-Resources Investigations Report 94-4169, 130 p., accessed January 24, 2008, at <http://pubs.er.usgs.gov/usgspubs/wri/wri944169>.
- Plummer, L.N., and Sprinkle, C.L., 2001, Radiocarbon dating of dissolved inorganic carbon in groundwater from confined parts of the Upper Floridan aquifer, Florida, USA: *Hydrogeology Journal*, v. 9, p. 127–150.

## Appendix 1 NetpathXL Spreadsheet File

NetpathXL requires an Excel file with a specified format. Cell A1 must contain the string “Netpath Spreadsheet 2.14.” Cells A7–AU7 must contain the literal headings specified in table 1. In files generated by DBXL, the cells A1–AU7 are locked so that they cannot be edited. The maximum number of analyses is limited to 400, compared to the limit of 50 in DB and NETPATH. Only rows 8 through 407 may contain analyses. Rows of analyses need not be contiguous; a nonempty well name is required in column 2 for a row to be considered a valid chemical analysis.

If data for an analysis are given in milligrams per liter (mg/L) or parts per million (ppm), then a gram formula weight is used to convert from mass to moles. The default gram formula weights for analytes are given in column 3 of table 1, and, for the case of alkalinity, in footnote 5 of table 1. These gram formula weights are specified in the file *db.dat*. The conversion factor from equivalents of  $\text{CaCO}_3$  to equivalents of  $\text{HCO}_3$  (1.2193) is hard coded in the source for NetpathXL.

**Table 1.** Description of cells in a NetpathXL spreadsheet file.

Cell number	Required heading	Default gram formula weight in <i>db.dat</i> grams per mole	Meaning of data values	Foot-note
A7	Number		Well identification number	
B7	Well name (required)		Well identifier (character string)	
C7	Units Flag		Options for concentration units	1
D7	Eh Flag		Options for interpretation of Eh	2
E7	Alk/TDIC Flag		Flag for interpretation of carbon data	3
F7	Act Coef Flag		Flag for activity coefficient selection	4
G7	Temp		Temperature, Celsius	
H7	pH		pH, standard units	
I7	Eh		Eh, in volts	
J7	Ca	40.08	Calcium concentration	
K7	Mg	24.312	Magnesium concentration	
L7	Na	22.9898	Sodium concentration	
M7	K	39.102	Potassium concentration	
N7	Cl	35.453	Chloride concentration	
O7	SO4 as SO4	96.0616	Sulfate concentration	
P7	Alk/TDIC	61.0173 or 50.04289	Alkalinity or total dissolved inorganic carbon concentration	5
Q7	Fe	55.847	Iron concentration	
R7	Mn	54.938	Manganese concentration	
S7	Al	26.9815	Aluminum concentration	
T7	F	18.9984	Fluoride concentration	
U7	Si as SiO2	60.0848	Silica concentration	
V7	Br	79.904	Bromide concentration	

**Table 1.** Description of cells in a NetpathXL spreadsheet file.—Continued

Cell number	Required heading	Default gram formula weight in db.dat grams per mole	Meaning of data values	Foot-note
W7	B	10.81	Boron concentration	
X7	Ba	137.34	Barium concentration	
Y7	Li	6.939	Lithium concentration	
Z7	Sr	87.62	Strontium concentration	
AA7	NO <sub>3</sub> as N	14.0067	Nitrate concentration	
AB 7	NH <sub>4</sub> as N	14.0067	Ammonium concentration	
AC7	P	30.9738	Phosphorus concentration	
AD7	O <sub>2</sub> (aq) as O <sub>2</sub>	31.9988	Dissolved oxygen concentration	
AE7	H <sub>2</sub> S(aq) as S	32.06	Dissolved sulfide concentration	
AF7	N <sub>2</sub> (aq) as N	14.0067	Dissolved nitrogen concentration	
AG7	CH <sub>4</sub> (aq) as CH <sub>4</sub>	16.0428	Dissolved methane concentration	
AH7	DOC as C	12.011	Dissolved organic carbon concentration	
AI7	RS of DOC		Redox state of dissolved organic carbon	
AJ7	C-13 TDIC		Carbon-13 ratio, permil	
AK7	C-14 TDIC		Carbon-14 concentration, percent modern carbon	
AL7	S-34 SO <sub>4</sub>		Sulfur-34 ratio of sulfate, permil	
AM7	S-34 H <sub>2</sub> S		Sulfur-34 ratio of sulfide, permil	
AN7	H-2		Hydrogen-2 ratio, permil	
AO7	H-3		Tritium concentration, tritium units	
AP7	O-18		Oxygen-18 ratio, permil	
AQ7	Sr-87		Strontium-87 ratio	
AR7	N-15 N <sub>2</sub> (aq)		Nitrogen-15 ratio of dissolved nitrogen, permil	
AS7	N-15 NO <sub>3</sub>		Nitrogen-15 ratio of nitrate, permil	
AT7	N-15 NH <sub>4</sub>		Nitrogen-15 ratio of ammonium, permil	
AU7	Density		Density, grams per centimeter cubed	

<sup>1</sup>Options for concentration units: 0 millimole per liter; 1 milliequivalent per liter; 2 milligrams per liter; 3 parts per million; and 4 millimoles per kilogram water.

<sup>2</sup>Options for calculating the Eh used to speciate redox elements (Fe and Mn): 0 redox is ignored; 1 specified Eh is used; 2 dissolved oxygen is used to calculate Eh; 3 the Sato relation is used to calculate Eh from dissolved oxygen concentration; and 4 sulfate and sulfide concentrations are used to calculate Eh.

<sup>3</sup>Options for alkalinity and total dissolved inorganic carbon (Alk/TDIC) data: 0 field alkalinity is entered as HCO<sub>3</sub><sup>-</sup>; 1 carbonate alkalinity (exclusive of all other alkalinity species) is entered as HCO<sub>3</sub><sup>-</sup>; 2 total dissolved inorganic carbon (TDIC) is entered as HCO<sub>3</sub><sup>-</sup>; and 3 field alkalinity is entered as CaCO<sub>3</sub>. Note that the gram equivalent weights for the formulas HCO<sub>3</sub><sup>-</sup> and CaCO<sub>3</sub> are needed only for converting mass concentration units—mg/L (milligrams per liter) and ppm (parts per million)—to moles or equivalents per kilogram water.

<sup>4</sup>Options for activity coefficients: 0 use the extended Debye-Hückel formula; and 1 use the Davies formula.

<sup>5</sup>Gram formula or equivalent weights for carbon and alkalinity: for TDIC, the gram formula weight used to convert milligrams per liter and parts per million to moles per kilogram water is 61.0173; for alkalinity, the gram equivalent weights used to convert milligrams per liter and parts per million to equivalents per kilogram of water are 61.0173 for HCO<sub>3</sub><sup>-</sup> and 50.04289 for CaCO<sub>3</sub>.

## Appendix 2. Coding methods

NetpathXL is written in FORTRAN 90 and compiled with Intel® FORTRAN compiler within the Microsoft Visual Studio® 8.0 programming environment. Originally, NetpathXL and DBXL were written to eliminate the method of screen painting that is used in NETPATH. NETPATH relies on a terminal mode described by *ansi.sys*, which is increasingly difficult to implement in recent Windows® operating systems. NetpathXL replaces the routines that cleared the screen and moved the cursor position (*clpart*, *moverelative*, *cls*, *home*, *poscur*) with new routines that use subroutines available for Intel FORTRAN QuickWin Applications, thereby eliminating the use of *ansi.sys*.

With the use of Intel FORTRAN, it also was possible to implement file browsing with standard Windows system calls,

which gives NetpathXL and DBXL more of the look and feel of current (2008) programming and simplifies the application of these programs in multiple directories.

Finally, the Excel Component Object Module (COM) interface was accessible through Intel FORTRAN, and it was possible to replace the functions of DB with Excel. A fixed format spreadsheet was devised for entering the data that were formerly entered through DB. Data entry is much simpler through a spreadsheet, and spreadsheet manipulations are familiar to most users. The use of Excel obviates the need for DB although DBXL is used to generate the fixed format spreadsheet and to translate solution data written by PHREEQC.

## Appendix 3. Interfacing with PHREEQC

DBXL can be used to translate analytical data from a NetpathXL spreadsheet (*.xls*) into a PHREEQC input file (*.pqi*). Translation is invoked by the fourth option of the options screen for DBXL [“(4) Create PHREEQC input file (*.pqi*) from NetpathXL file.”]. The root name of the *.xls* file is the file name, less the *.xls* extension. The new PHREEQC input file will be named with the root name plus a *.pqi* extension and will be located in the same directory in which the *.xls* file resides. The PHREEQC file will be a single **SOLUTION\_SPREAD** data block with a row for each analysis in the NetpathXL spreadsheet.

PHREEQC and PhreeqcI versions 2.15 have new capabilities to translate data and inverse models from PHREEQC formats to NetpathXL formats. The “-lon\_netpath *root*” identifier of the **INVERSE\_MODELING** data block will write a file named *root.lon* (DBXL *.lon* format) that contains an entry for each solution composition that has been defined previous to the **INVERSE\_MODELING** data block in the PHREEQC input file, including solutions defined by **SOLUTION**, **SOLUTION\_SPREAD**, and **SAVE**. The units of the analyses in the *.lon* file will be millimoles per kilogram water, which may differ from the units by which the solution data were originally defined in PHREEQC. The *.lon* file can be converted to a NetpathXL spreadsheet with DBXL.

The “-pat\_netpath *root*” identifier of the **INVERSE\_MODELING** data block will write a NetpathXL *.pat* file and multiple NetpathXL model files, one model file for each model found by PHREEQC inverse modeling. Because

PHREEQC adjusts concentrations of solutions as part of the inverse-modeling calculation, the adjusted concentrations of a solution may be slightly different for each model that includes that solution. Model-specific solution compositions are written to the *.pat* file for each inverse model. These adjusted solutions combined with the constraints and reactive phases saved in the model file can be used in NetpathXL to reproduce the PHREEQC model. The solutions in the *.pat* file are identified by model number at the beginning of the solution description (Well name). The model number corresponds with the name of the associated model file (*root-n.mod*, where *n* is the model number).

PHREEQC can produce models with fewer phases than constraints, whereas NetpathXL requires an equal number of phases and constraints for each model. Be sure to have at least as many phases as constraints when running NetpathXL; it may be necessary to include additional phases in the NetpathXL model definition to be able to reproduce the PHREEQC model. However, the mole transfers of the additional phases in the NetpathXL model (compared to the PHREEQC model) should be near zero for at least one model found by NetpathXL (roundoff errors may lead to slightly nonzero mole transfers for the added phases). In addition, the definitions of the model file may not be complete for isotope calculations. Any definitions missing from the model that is read by NetpathXL will have to be added through the NetpathXL data-entry screens.

