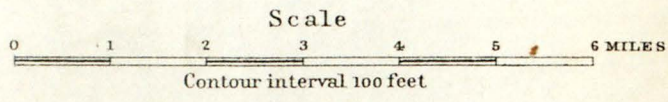


SKETCH MAP SHOWING GEOLOGY AND TOPOGRAPHY OF THE BIRCH CREEK GOLD MINING DISTRICT ALASKA



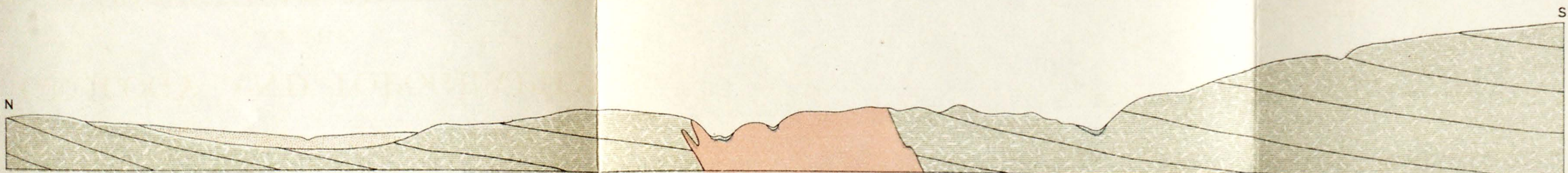
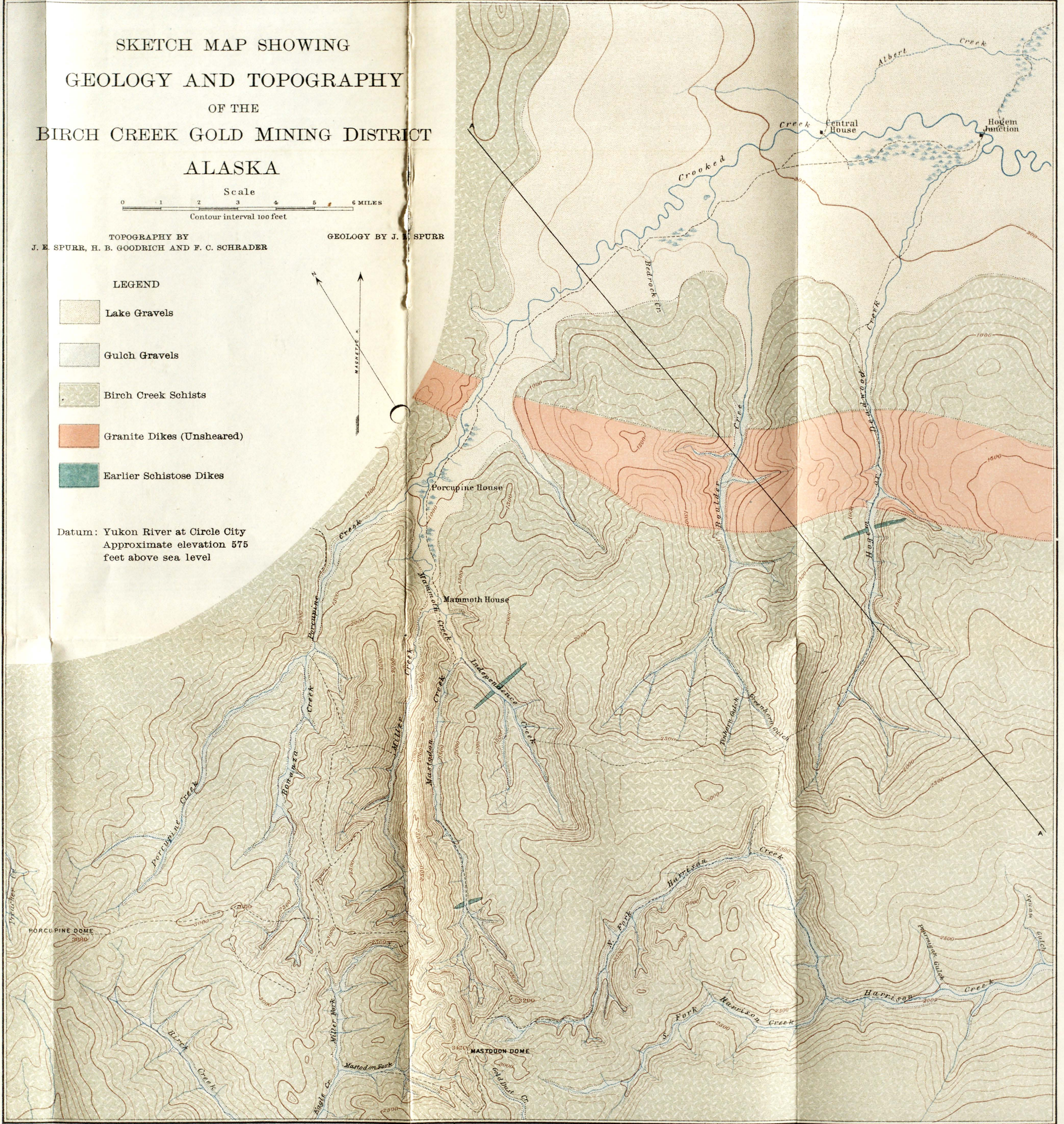
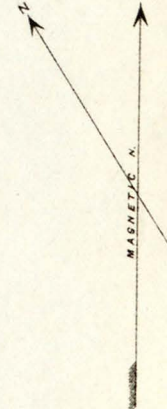
TOPOGRAPHY BY
J. E. SPURR, H. B. GODDRICH AND F. C. SCHRADER

GEOLOGY BY J. E. SPURR

LEGEND

-  Lake Gravels
-  Gulch Gravels
-  Birch Creek Schists
-  Granite Dikes (Unsheared)
-  Earlier Schistose Dikes

Datum: Yukon River at Circle City
Approximate elevation 575
feet above sea level



SECTION ON LINE A-A VERTICAL SCALE 4 TIMES EXAGGERATED.

JULIUS BIEN & CO. LITH. N. Y.