

Bulletin No. 285

Series A, Economic Geology, 73

DEPARTMENT OF THE INTERIOR
UNITED STATES GEOLOGICAL SURVEY

CHARLES D. WALCOTT, DIRECTOR

CONTRIBUTIONS

TO

ECONOMIC GEOLOGY

1905

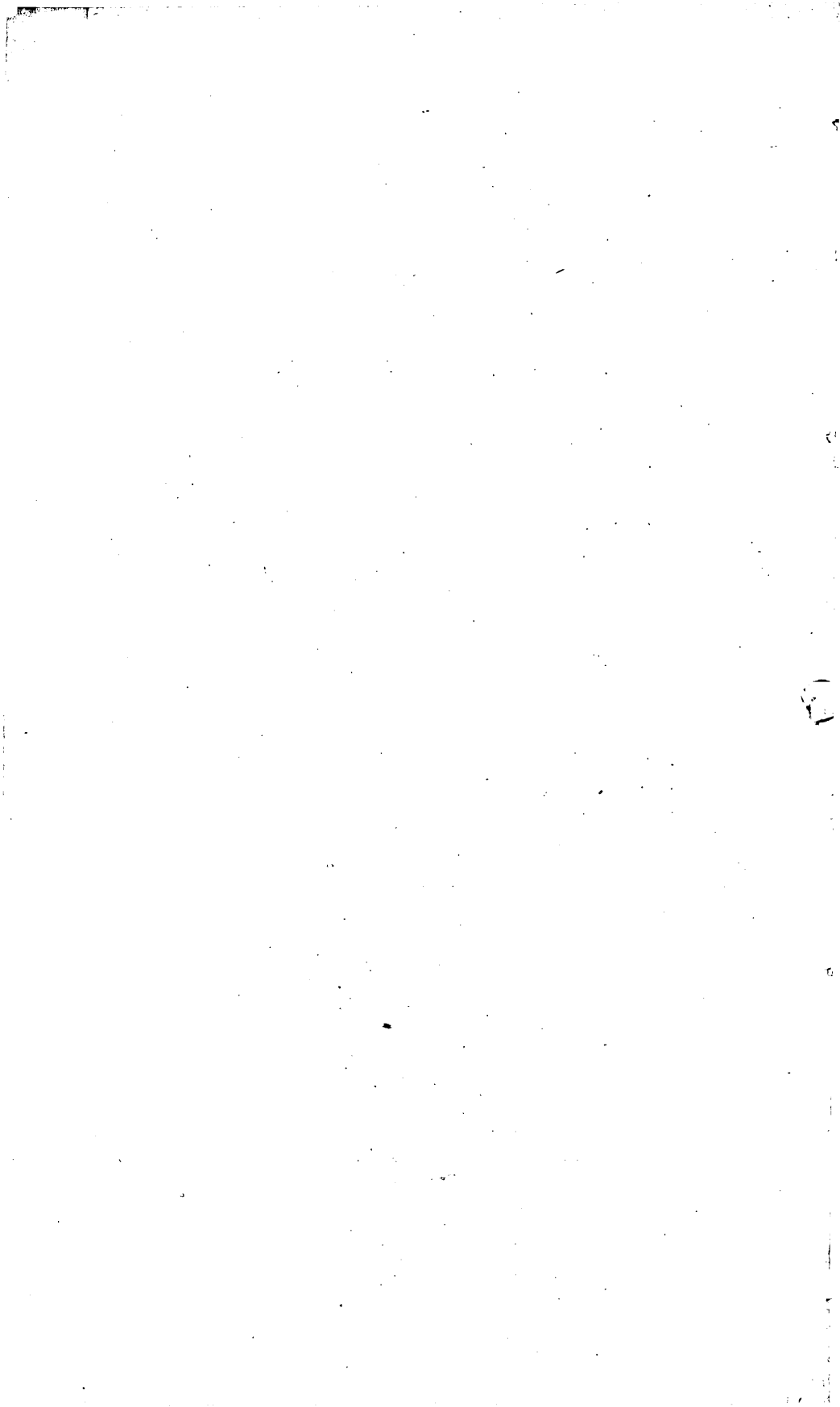
S. F. EMMONS

E. C. ECKEL

Geologists in Charge



WASHINGTON
GOVERNMENT PRINTING OFFICE
1906



CONTENTS.

	Page.
INTRODUCTION, by C. W. Hayes.....	7
INVESTIGATION OF METALLIFEROUS ORES, by S. F. Emmons.....	14
INVESTIGATION OF IRON ORES AND NONMETALLIFEROUS MINERALS, by E. C. Eckel ..	20
GOLD AND SILVER.....	25
Colorado:	
Ore deposits of Bear Creek, near Silverton, by W. H. Emmons.....	25
The Hahns Peak gold field, by H. S. Gale.....	28
The Idaho Springs mining district, by G. H. Garrey.....	35
Idaho-Montana:	
Economic features of northern Idaho and northwestern Montana, by D. F. MacDonald.....	41
Nevada-California:	
Notes on the ore deposits of southwestern Nevada and eastern California, by S. H. Ball.....	53
New Mexico:	
A reconnaissance of the mineral deposits of New Mexico, by Waldemar Lindgren and L. C. Graton.....	74
Utah:	
The Annie Laurie mine, Piute County, by Waldemar Lindgren.....	87
Survey publications on gold and silver.....	91
COPPER.....	93
General United States:	
The copper mines of the United States in 1905, by W. H. Weed.....	93
Colorado:	
The Cashin mine, Montrose County, by W. H. Emmons.....	125
Idaho:	
Ore deposits in the St. Joe River basin, by A. J. Collier.....	129
Virginia:	
Copper deposits near Luray, by W. C. Phalen.....	140
Survey publications on copper.....	144
TIN, QUICKSILVER, PLATINUM, ETC.....	146
Texas:	
Tin in the Franklin Mountains, by G. B. Richardson.....	146
General:	
Investigation of black sands from placer mines, by D. T. Day and R. H. Richards.....	150
Survey publications on tin, quicksilver, platinum, etc.....	165
LEAD AND ZINC.....	166
Nevada:	
A Nevada zinc deposit, by H. F. Bain.....	166
Survey publications on lead and zinc.....	170
ALUMINUM.....	171
Survey publications on aluminum ores.....	171

	Page.
IRON AND MANGANESE.....	172
Alabama:	
The "Clinton" or red ores of northern Alabama, by E. C. Eckel.....	172
Kentucky:	
The iron ores of Bath County, by E. M. Kindle.....	180
Virginia:	
The Oriskany and Clinton iron ores of Virginia, by E. C. Eckel.....	183
The brown ores of the New River-Cripple Creek district, by R. J. Holden..	190
Western United States and British Columbia:	
Iron ores of the western United States and British Columbia, by C. K. Leith.....	194
Survey publications on iron and manganese.....	201
COAL, LIGNITE, AND PEAT.....	203
General United States:	
Survey work on coal during 1905, by M. R. Campbell.....	203
Alabama:	
The Warrior coal basin in the Birmingham quadrangle, by Charles Butts..	211
California:	
Coal in the Mount Diablo Range, Monterey County, by Ralph Arnold.....	223
Colorado-New Mexico:	
The Yampa coal field, Routt County, Colo., by N. M. Fenneman and H. S. Gale.....	226
The Engle coal field, New Mexico, by W. T. Lee.....	240
The Durango-Gallup coal field of Colorado and New Mexico, by F. C. Schrader.....	241
Kentucky:	
Coal resources of the Kenova quadrangle [Ky.-Ohio-W. Va.], by W. C. Phalen.....	259
Montana:	
Development of the Bear Creek coal fields, by C. A. Fisher.....	269
Pennsylvania:	
The Clearfield coal field, by G. H. Ashley.....	271
The Punxsutawney and Glen Campbell coal fields of Indiana and Jefferson counties, by F. B. Peck and G. H. Ashley.....	276
Utah:	
Coal in Sanpete County, by G. B. Richardson.....	280
Notes on the Weber River coal field, by J. A. Taff.....	285
The Book Cliffs coal field, west of Green River, by J. A. Taff.....	289
Wyoming-Montana-North Dakota:	
Mineral resources of the Bighorn Mountain region, by N. H. Darton.....	303
Mineral resources of the Bighorn Basin, by C. A. Fisher.....	311
The North Dakota-Montana lignite area, by A. G. Leonard.....	316
Coal and oil in southern Uinta County, by A. C. Veatch.....	331
Survey publications on coal, lignite, and peat.....	354
PETROLEUM AND NATURAL GAS.....	357
California:	
The Salt Lake oil field near Los Angeles, by Ralph Arnold.....	357
Pennsylvania:	
The Nineveh and Gordon oil sands in western Greene County, by F. G. Clapp.....	362
Survey publications on petroleum and natural gas.....	367
ASPHALT.....	369
Utah:	
Ozokerite deposits in Utah, by J. A. Taff and C. D. Smith.....	369
Survey publications on asphalts.....	373

	Page.
PORTLAND, NATURAL, AND PUZZOLAN CEMENTS.....	374
Tennessee-Virginia:	
Cement resources of the Cumberland Gap district, by E. C. Eckel.....	374
Washington:	
Cement resources of Washington, by Henry Landes.....	377
Survey publications on Portland, natural, and puzzolan cements.....	384
LIME AND MAGNESIA.....	385
California:	
Some magnesite deposits of California, by F. L. Hess.....	385
Maine:	
The lime industry of Knox County, by E. S. Bastin.....	393
GYPSUM AND PLASTERS.....	401
Colorado:	
Gypsum of the Uncompahgre region, by C. E. Siebenthal.....	401
Wyoming:	
Gypsum deposits of the Laramie district, by C. E. Siebenthal.....	404
Survey publications on gypsum, salt, borax, and soda.....	406
CLAYS.....	407
Arkansas:	
Clays of Garland County, by E. C. Eckel.....	407
Kentucky-Tennessee:	
Clay resources of northeastern Kentucky, by W. C. Phalen.....	412
Clays of western Kentucky and Tennessee, by A. F. Crider.....	417
Maine:	
Clays of the Penobscot Bay region, by E. S. Bastin.....	428
Massachusetts:	
Clays of Cape Cod, by M. L. Fuller.....	432
Pennsylvania:	
Notes on clays and shales in central Pennsylvania, by G. H. Ashley.....	442
Wyoming:	
Bentonite of the Laramie basin, by C. E. Siebenthal.....	445
Survey publications on clays, fuller's earth, etc.....	448
BUILDING STONE AND ROAD METAL.....	449
Maine:	
Note on a new variety of Maine slate, by T. N. Dale.....	449
Survey publications on building stone and road metal.....	451
GLASS-MAKING MATERIALS.....	452
General:	
The requirements of sand and limestone for glass making, by E. F. Burchard.....	452
Mississippi basin:	
Glass sand of the middle Mississippi basin, by E. F. Burchard.....	459
West Virginia:	
The glass-sand industry in eastern West Virginia, by G. W. Stose.....	473
MISCELLANEOUS NONMETALS.....	476
Colorado:	
Volcanic ash near Durango, by L. H. Woolsey.....	476
Maine:	
Graphite in Maine, by G. O. Smith.....	480
Survey publications on mica, graphite, abrasive materials, etc.....	484
Survey publications on sulphur and pyrite.....	485
Survey publications on phosphates and other mineral fertilizers.....	486
Survey work on water.....	487
INDEX.....	489

ILLUSTRATIONS.

	Page.
PLATE I. Geologic map of Hahns Peak and vicinity, Colorado, showing distribution of rock formations and placer ground.....	28
II. Hahns Peak and vicinity, Colorado.....	30
III. Map showing the distribution of the productive copper mines of the United States.....	94
IV. Map of the St. Joe River district, Idaho.....	130
V. Map of the Warrior coal basin in the Birmingham quadrangle, Alabama..	212
VI. Map of Yampa coal field, Routt County, Colorado.....	226
VII. Reconnaissance map of part of Durango-Gallup coal field, showing outcrops of coal-bearing rocks.....	242
VIII. Sketch map of part of Sanpete Valley, Utah, showing sections across the Wales and Sterling coal beds.....	280
IX. Map of Book Cliffs coal field, west of Green River, Utah, showing outcrops of coal-bearing rocks.....	290
X. Map of coal fields of southern Uinta County, Wyoming.....	336
XI. Geologic map of southern Uinta County, Wyoming, showing economic data relating to oil, underground water, and copper.....	342
XII. A, Cross section along line AA, Pls. X and XI, showing geologic relations of oil springs at Hilliard and of wells in the Spring Valley region; B, cross section along line BB, Pls. X and XI, showing geologic relations of coal beds, and oil springs and wells in the fossil region.....	350
XIII. Map showing clay-producing localities of western Tennessee and Kentucky.....	418
FIG. 1. Cross section through Hahns Peak and Farwell Mountain.....	29
2. Outline map of northern Idaho and northwestern Montana.....	42
3. Sketch map of southwestern Nevada and eastern California, showing location of mining camps.....	54
4. Map of New Mexico.....	75
5. Diagram showing production and prices of copper in the United States from 1893 to 1905.....	94
6. Map showing location of St. Joe River basin.....	130
7. Geologic map of the Franklin Mountains, Texas.....	147
8. Generalized section at Iron Gate, Va.....	185
9. Theoretical section from the Stone Canyon coal mine, Monterey County, Cal., northward to the main ridge, showing relation of Upper Miocene beds to the coal-bearing formation.....	224
10. Sketch map of northeastern Kentucky and portions of adjacent States.....	260
11. Sketch map of southern Clearfield and parts of Indiana and Jefferson counties, Pa.....	272
12. Map of the Salt Lake oil field, 7 miles west of Los Angeles, Cal.....	358
13. Map showing distribution of limestone and locations of quarries in vicinity of Rockport, Me.....	393
14. Map showing distribution of limestone and locations of quarries in vicinity of Rockland and Thomaston, Me.....	394
15. Diagrammatic geologic section across the principal limestone belt, southwest of Rockland, Me.....	397
16. Gypsum measures of the Uncompahgre region.....	401