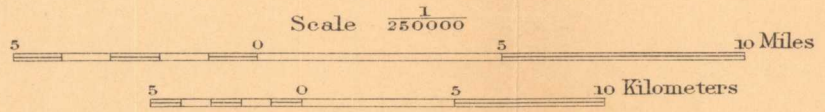
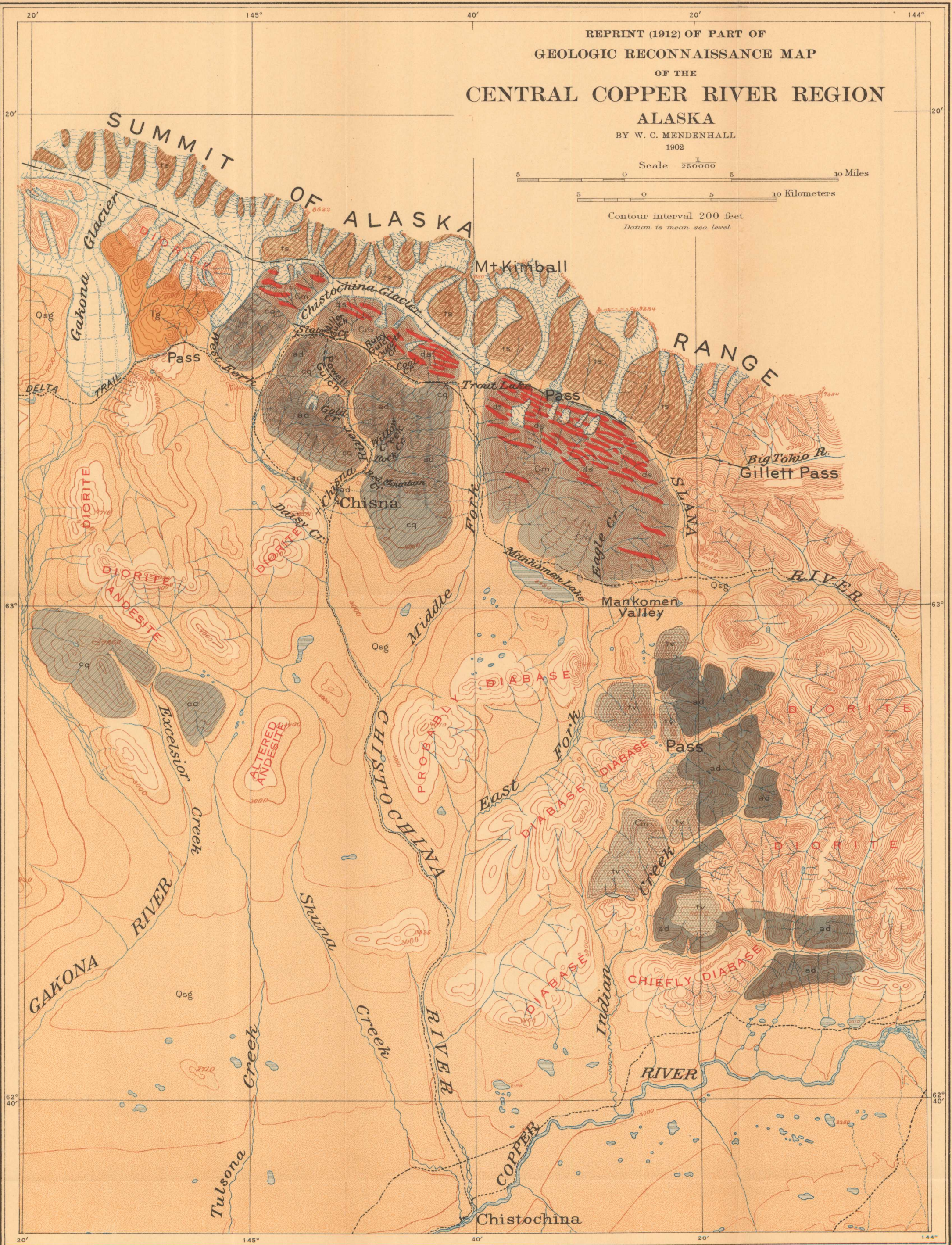


REPRINT (1912) OF PART OF  
GEOLOGIC RECONNAISSANCE MAP  
OF THE  
**CENTRAL COPPER RIVER REGION**  
ALASKA

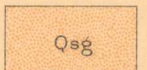
BY W. C. MENDENHALL  
1902



Contour interval 200 feet  
Datum is mean sea level



LEGEND



Silts, sands, and gravels

QUATERNARY



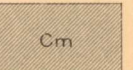
Gakona formation  
(conglomerates, sandstones,  
and shales of Eocene age)

TERTIARY



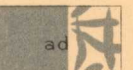
Dikes and sills  
chiefly basic

POST-CARBONIFEROUS



Mankomen formation  
(sandstones, tuffaceous  
beds, shales, and lime-  
stones of Permian age)

CARBONIFEROUS

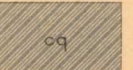


Ahtell diorite  
(chiefly quartz diorite or  
quartz diorite porphyry)

UPPER PALEOZOIC



Tetelna volcanics  
(usually altered andesites)

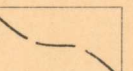


Chisna formation  
(conglomerates, quartzites,  
and tuffs)

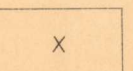


Tanana schist  
(Birch Creek schist of later  
reports)  
(sericitic, graphitic, and  
other types of schists)

PRE-SILURIAN



Fault



Gold placer