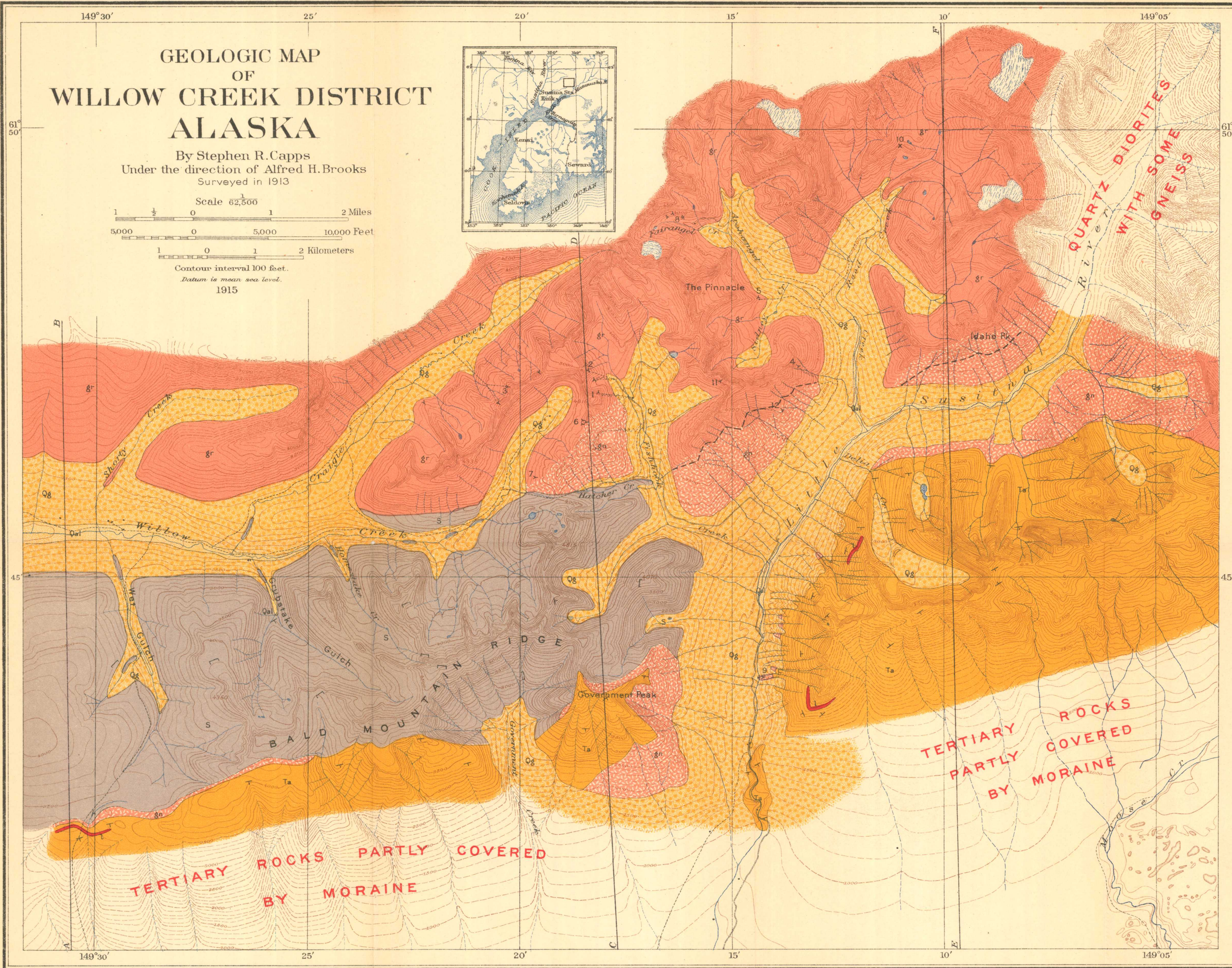
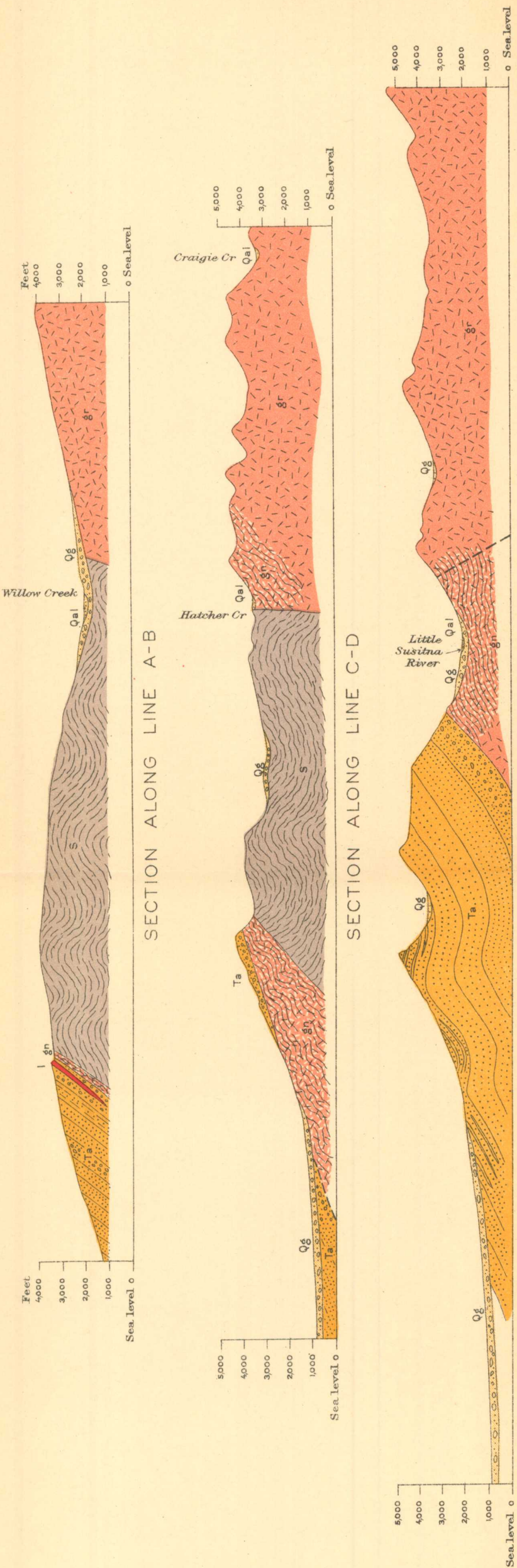
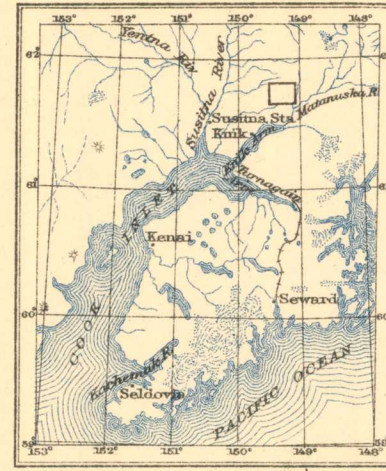


U. S. GEOLOGICAL SURVEY
GEORGE OTIS SMITH, DIRECTOR

GEOLOGIC MAP OF WILLOW CREEK DISTRICT ALASKA

By Stephen R. Capps
Under the direction of Alfred H. Brooks
Surveyed in 1913

Scale 62,500
1 1/2 1 2 Miles
5,000 0 5,000 10,000 Feet
1 0 1 2 Kilometers
Contour interval 100 feet.
Datum is mean sea level.
1915



- LEGEND
- SEDIMENTARY ROCKS
- Qal Alluvium (Deposits of present streams)
 - Qg Glacial deposits (Glacial till and outwash gravel)
 - Ta Arkose, shale, sandstone, and conglomerate of Eocene age
 - S Mica schist (Includes also some igneous rocks intruded into the schist)
- IGNEOUS ROCKS
- L Lava flows (Interbedded with Eocene sedimentary rocks)
 - Gn Granitic intrusives, predominantly quartz diorite
 - Gn Gneiss (Grades into granitic intrusives at contact)
- PROBABLE FAULT
- Strike and dip of bedding
Strike and dip of schistosity

- MINES AND PROSPECTS
- 1 Alaska Free Gold Mining Co.
 - 2 Alaska Gold Quartz Mining Co.
 - 3 Gold Bullion Mining Co.
 - 4 Mabel mine
 - 5 Arch prospect
 - 6 Brooklyn Development Co.
 - 7 Mammoth prospect
 - 8 Matanuska Gold Mining Co.
 - 9 Miller prospect
 - 10 Mogul prospect
 - 11 Rosenthal prospect
 - 12 Shough prospect

Alfred H. Brooks, Geologist in charge of division
Topography by C. E. Giffin and R. H. Sargent
Control by C. E. Giffin
Geodetic position based upon data
by Coast and Geodetic Survey
Broken lines represent approximate topography
Surveyed in 1909-1913

SNYDER & BLACK, N.Y.