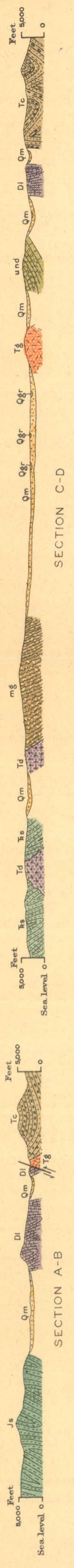




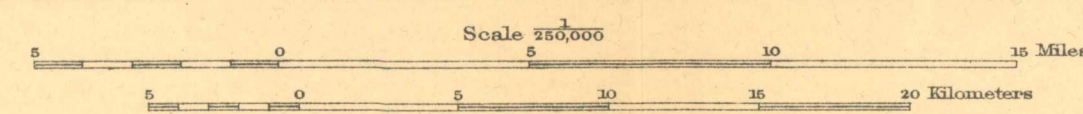
- QUATERNARY**
- Recent
 - Qgr Stream gravels, sands, and silts, with some glacial deposits
 - Qm Glacial gravels, sands, and silts and morainal deposits
- TERTIARY**
- Eocene
 - Ts Shale, sandstone, and conglomerate, slightly indurated
 - Tc Cantwell formation (heavy beds of massive to schistose conglomerate, with intercalated beds of sandstone, graywacke, argillite, and carbonaceous shale and slate carrying leaf impressions)
 - und Undifferentiated Mesozoic (?) (gently folded limestones and argillites of variegated aspect, more or less silicified; closely folded slate and gray thin-bedded limestone, with intercalations of schistose graywacke; gently folded white silicified limestone with some blue slate)
 - Js Closely folded dark-blue slate with beds of conglomerate, graywacke, and impure, more or less altered limestone
- JURASSIC?**
- TRIASSIC?**
- Upper Triassic?
 - Rs Slate with intercalated beds of coarser sediments (graywacke, arkose, etc.), closely folded and in part schistose
 - Tal Amygdaloidal lava flows (basalt and andesite) with intercalated suffaceous beds
- DEVONIAN**
- Middle or Upper Devonian
 - D Limestone, more or less silicified and altered, with intercalated conglomerate
- IGNEOUS ROCKS**
- Post-Eocene
 - Ta Amygdaloidal andesite
 - Tal Acidic lava flows, mostly rhyolite and trachyte, with some andesite
- TERTIARY**
- Post-Eocene?
 - Tgp Granite porphyry
 - Tg Granite with some quartz monzonite
- JURASSIC?**
- Post-Triassic
 - Tog Olivine gabbro
 - Td Quartz diorite and quartz monzonite
 - Tg Gneiss (altered granular intrusive)
- Pre-Tertiary
 - Fault
 - X Gold placer



Alfred H. Brooks, Geologist in charge of division
 Topography by J. W. Bagley and D. C. Witherspoon
 Surveyed in 1910 and 1913

GEOLOGIC RECONNAISSANCE MAP OF THE BROAD PASS REGION, ALASKA

Geology by Fred H. Moffit,
 B. L. Johnson, and J. E. Pogue
 Surveyed in 1910 and 1913



Note: Datum proves to be approximately 200 feet higher than that of the maps of areas in the Yukon region.
 Broken contour lines indicate probable topography of unsurveyed areas

