

DEPARTMENT OF THE INTERIOR

FRANKLIN K. LANE, Secretary

UNITED STATES GEOLOGICAL SURVEY

GEORGE OTIS SMITH, Director

Bulletin 662

MINERAL RESOURCES OF ALASKA

REPORT ON PROGRESS OF
INVESTIGATIONS IN

1916

BY

ALFRED H. BROOKS AND OTHERS

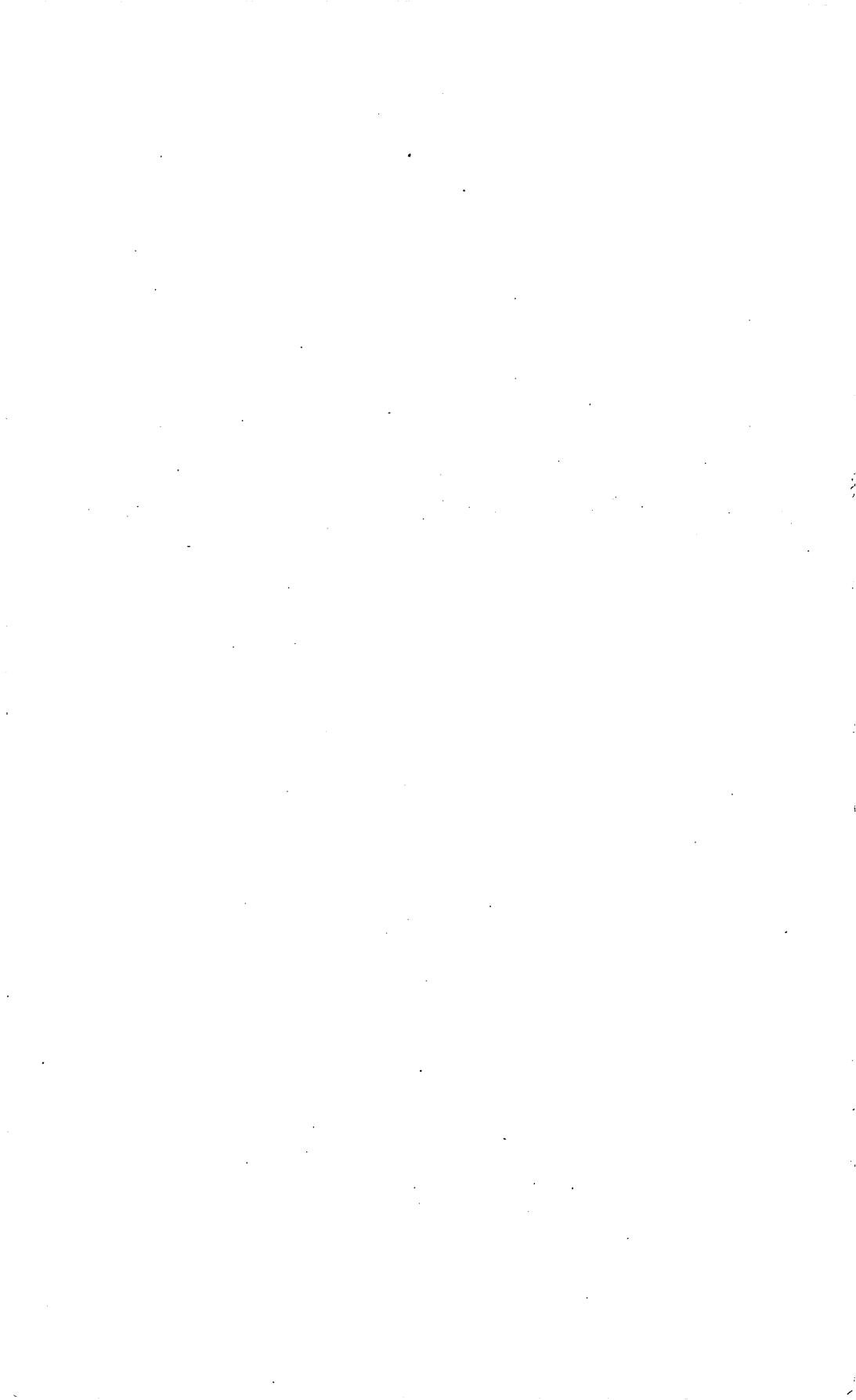


JANCELLED.

WASHINGTON

GOVERNMENT PRINTING OFFICE

1918



CONTENTS.

	Page.
Preface, by A. H. Brooks.....	1
Administrative report, by A. H. Brooks.....	3
The Alaskan mining industry in 1916, by A. H. Brooks.....	11
Mining developments in the Ketchikan and Wrangell mining districts, by Theodore Chapin.....	63
Lode mining in the Juneau gold belt, by H. M. Eakin.....	77
Gold placer mining in the Porcupine district, by H. M. Eakin.....	93
Water-power investigations in southeastern Alaska, by G. H. Canfield.....	101
Mining in the lower Copper River basin, by F. H. Moffit.....	155
Mining on Prince William Sound, by B. L. Johnson.....	183
Copper deposits of the Latouche and Knight Island districts, Prince William Sound, by B. L. Johnson.....	193
The gold placers of the Tolovana district, by J. B. Mertie, jr.....	221
Mineral resources of the Kantishna region, by S. R. Capps.....	279
Gold placers of the Anvik-Andreafski region, by G. L. Harrington.....	333
Lode deposits near the Nenana coal field, by R. M. Overbeck.....	351
Gold placers near the Nenana coal field, by A. G. Maddren.....	363
Lode mining in the Fairbanks district, by J. B. Mertie, jr.....	403
Lode mining and prospecting on Seward Peninsula, by J. B. Mertie, jr.....	425
Placer mining on Seward Peninsula, by J. B. Mertie, jr.....	451
Index.....	459
Recent Survey publications on Alaska.....	I

ILLUSTRATIONS.

	Page.
PLATE I. Map of Alaska showing distribution of mineral resources.....	In pocket.
II. Diagram of value of mineral production of Alaska, 1880-1916.....	12
III. Map showing location of Katalla and Yakataga oil fields.....	32
IV. Map showing location of Iniskin Bay and Cold Bay oil fields.....	36
V. Map of Ketchikan mining district.....	64
VI. Map of the northern part of the Juneau gold belt.....	78
VII. Map showing location of mining properties in the Juneau district..	80
VIII. Map showing economic geology in the vicinity of Porcupine.....	94
IX. Map of southeastern Alaska, showing location of gaging stations.....	102
X. Map showing mineral resources of lower Copper River region.....	156
XI. Sketch map of vicinity of McCarthy and Kennicott.....	164
XII. Geologic sketch map of the Latouche and Knight Island districts	194
XIII. Geologic map of Tolovana district.....	222
XIV. Livengood and asymmetric valley of Livengood Creek.....	260
XV. Sketch map of Kantishna region, showing distribution of rock formations and location of mines and prospects.....	282
XVI. Geologic sketch map of Anvik-Andreafski region.....	338
XVII. Map showing location of lode deposits and gold placers near the Nenana coal field.....	352
XVIII. Map showing lode mines and prospects in the Fairbanks district.....	404
FIGURE 1. Map showing location of prospects in the vicinity of Wrangell.....	74
2. Section showing geologic structure on Golden Creek.....	161
3. Sketch showing displacement of ore body along a vertical fault, 100-foot level of Kennecott-Bonanza mine.....	168
4. Horizontal section of ore body of Jumbo mine, 500-foot level.....	171
5. Sketch map showing watershed between Yukon and Tanana drainage basins.....	224
6. Sketch map of placer gold bench claims on Livengood Creek.....	267
7. Index map showing location of the Kantishna region.....	280
8. Sketch map showing tungsten lode claims in the Fairbanks district..	418