

DEPARTMENT OF THE INTERIOR

ALBERT B. FALL, Secretary

UNITED STATES GEOLOGICAL SURVEY

GEORGE OTIS SMITH, Director

Bulletin 726

CONTRIBUTIONS TO ECONOMIC GEOLOGY

(SHORT PAPERS AND PRELIMINARY REPORTS)

1921

PART II.—MINERAL FUELS

DAVID WHITE AND M. R. CAMPBELL

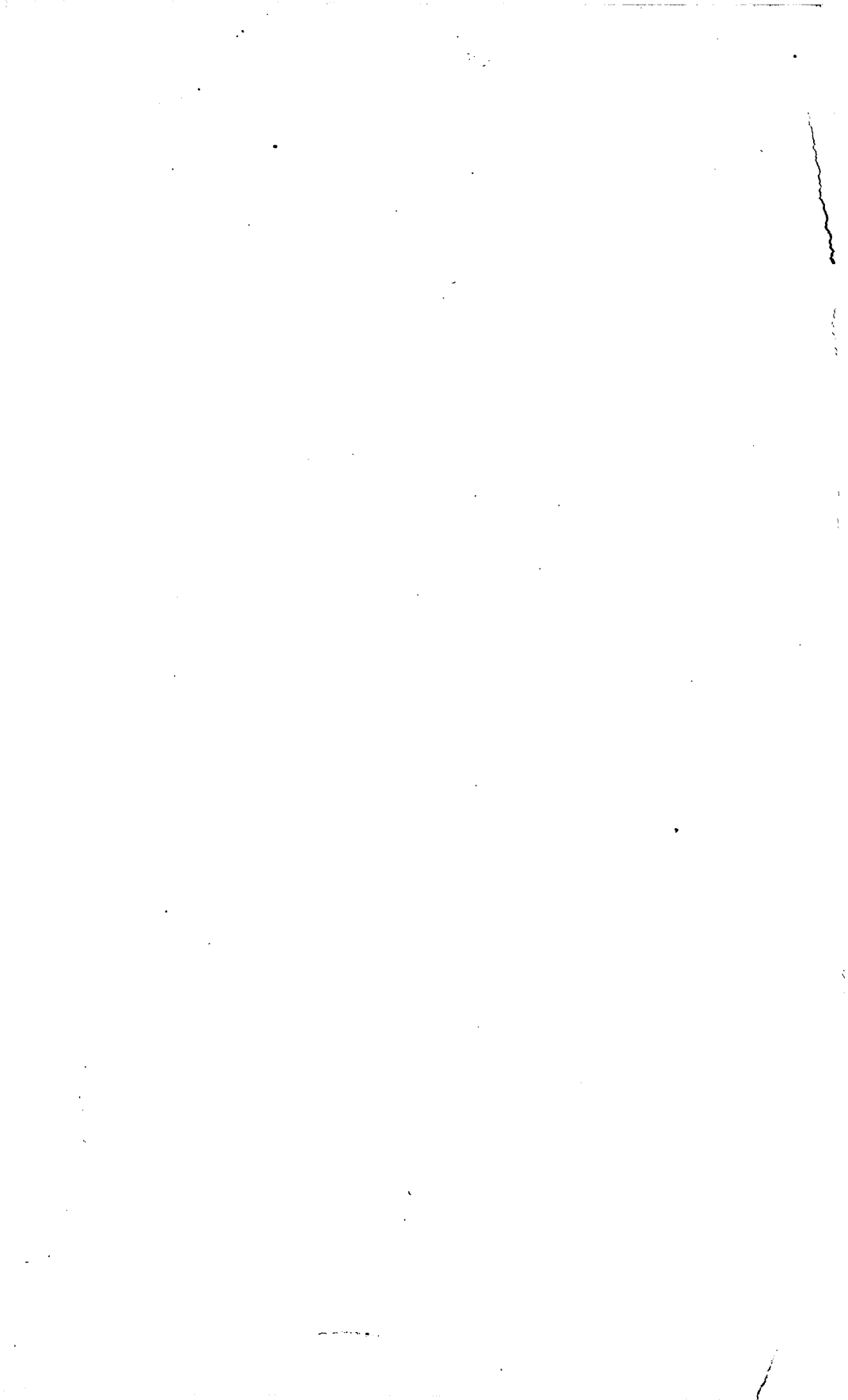
GEOLOGISTS IN CHARGE



WASHINGTON

GOVERNMENT PRINTING OFFICE

1922



CONTENTS.

[The letters in parentheses preceding the titles are those used to designate the papers for advance publication.]

	Page.
(A) The New Salem lignite field, Morton County, N. Dak., by E. T. Hancock (published May 6, 1921)-----	1
(B) Geology of the Cement oil field, Caddo County, Okla., by Frank Reeves (published August 10, 1921)-----	41
(C) Oil prospects in Washington County, Utah, by Harvey Bassler and J. B. Reeside, jr. (published August 15, 1921)-----	87
(D) Lignite in the Fort Berthold Indian Reservation, N. Dak., by C. M. Bauer and F. A. Herald (published December 3, 1921)-----	109
(E) Geologic structure of parts of New Mexico, by N. H. Darton (published March 31, 1922)-----	173
(F) Geologic structure and oil and gas prospects of a part of Jefferson County, Okla., by H. M. Robinson (published December 20, 1921)-----	277
(G) The Lacasa area, Ranger district, north-central Texas, by C. S. Ross (published December 23, 1921)-----	303
Index-----	315

ILLUSTRATIONS.

	Page.
PLATE I. A, Level upland in vicinity of New Salem, N. Dak.; B, Valley of Heart River in T. 138 N., R. 83 W., N. Dak.-----	6
II. A, Large glacial boulders on upland in sec. 17, T. 138 N., R. 84 W., N. Dak.; B, Cannonball marine member of Lance formation in bluff of Heart River, sec. 10, T. 138 N., R. 83 W., N. Dak.-----	7
III. Sections showing thickness, positions, and names of lignite beds in New Salem field, Morton County, N. Dak.-----	14
IV. A, Dakota Products Co.'s mine near New Salem, N. Dak.; B, Crown Butte, on upland in sec. 31, T. 140 N., R. 82 W., N. Dak.-----	26
V. Geologic map of the New Salem lignite field, Morton County, N. Dak.-----	38
VI. Geologic map of Oklahoma showing oil and gas fields.-----	42
VII. Erosion features of Cyril gypsum and Whitehorse sandstone.-----	48
VIII. Erosion features of Cyril gypsum and Whitehorse sandstone.-----	49
IX. Cross-bedding in Whitehorse sandstone.-----	60

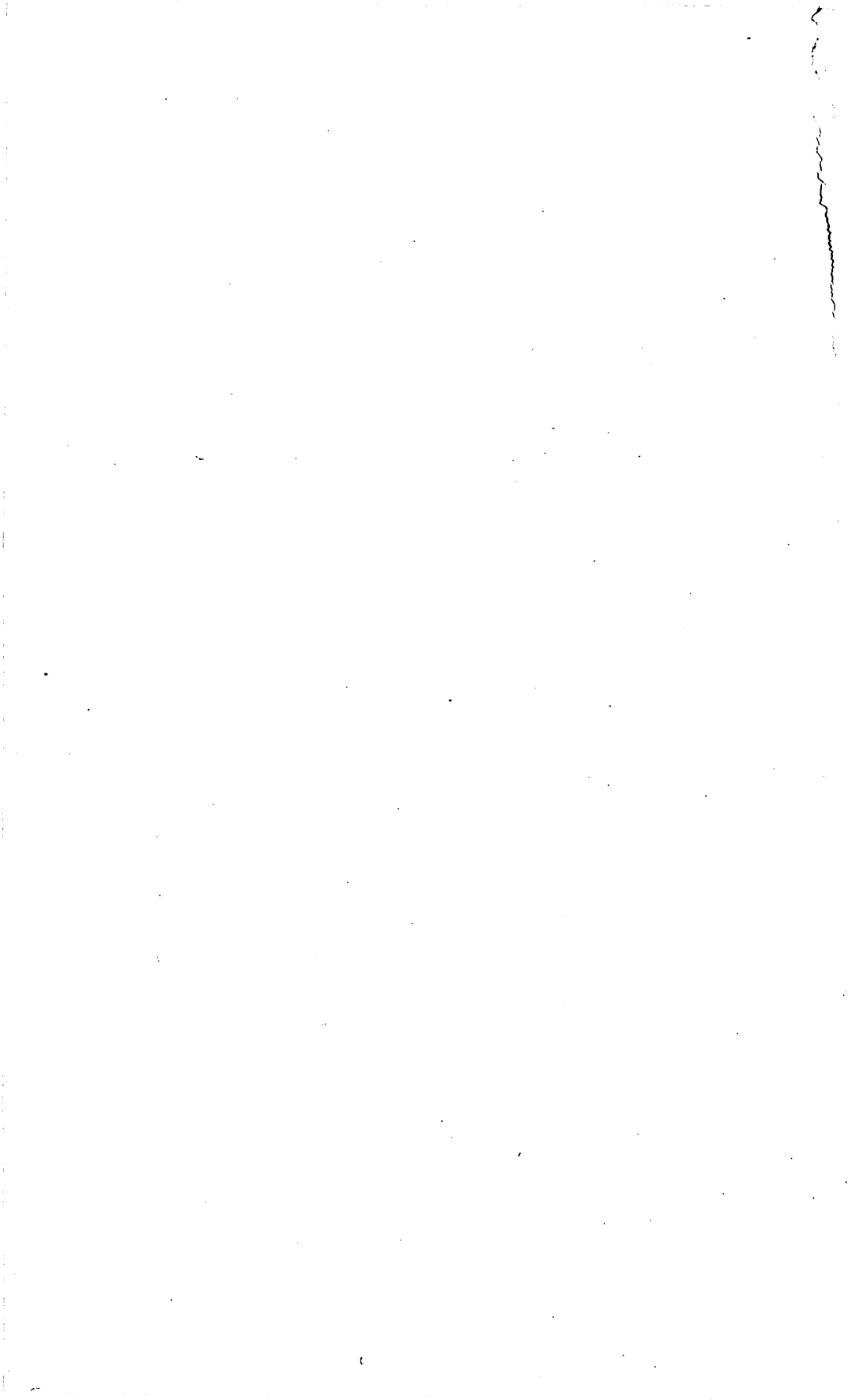
	Page.
PLATE X. Plotted logs of 11 wells in Cement oil field, Caddo County, Okla -----	72
XI. Structural map of Cement oil field and surrounding territory, Caddo County, Okla ----- In pocket.	
XII. Structural map of Kiowa area, Caddo County, Okla ----- In pocket.	
XIII. A, "Breaks" of the Little Missouri, looking southeast toward the mouth of Hans Creek, N. Dak. ; B, A thick bed of lignite in the Fort Berthold Indian Reservation, N. Dak. -----	112
XIV. A, Badlands in sec. 26, T. 147 N., R. 93 W., N. Dak. ; B, Badlands in sec. 25, T. 147 N., R. 93 W., N. Dak. -----	113
XV. A, Missouri River, N. Dak., as seen from the upper margin of the badlands, looking north ; B, Valley of Moccasin Creek near its mouth, in sec. 6, T. 147 N., R. 92 W., N. Dak. -----	114
XVI. Stratigraphic sections in Fort Berthold Indian Reservation, N. Dak., showing correlation of coal beds -----	128
XVII. Sections of lignite beds in the northern part of the Fort Berthold Indian Reservation, N. Dak. -----	132
XVIII. A, Bare buttes of the Fort Union formation on the south side of Hans Creek, N. Dak. ; B, Log concretions in Fort Union formation -----	140
XIX. A, Glacial boulders on the upland in T. 147 N., R. 93 W., N. Dak. ; B, Bed of lignite 8 feet thick in natural exposure in sec. 14, T. 147 N., R. 93 W., N. Dak. -----	141
XX. Sections of lignite beds in the northern part of the Fort Berthold Indian Reservation, N. Dak. -----	144
XXI. A, Fossil log standing nearly upright in clay shale of the Fort Union formation ; B, Fossil stump in Fort Union formation -----	152
XXII. A, Sage-brush flat of Hans Creek, N. Dak., and bluffs of the Fort Union formation ; B, Rolling upland in the Fort Berthold Indian Reservation, N. Dak. -----	153
XXIII. Sections of lignite beds in the southwestern part of the Fort Berthold Indian Reservation, N. Dak. -----	154
XXIV. A, Buttes in sec. 9, T. 148 N., R. 93 W., N. Dak. ; B, Buttes in T. 148 N., R. 93 W., N. Dak. -----	160
XXV. A, View up Squaw Creek, N. Dak. ; B, Bare buttes in Squaw Creek valley in sec. 10, T. 148 N., R. 93 W., N. Dak. -----	161
XXVI. Sections of lignite in the southern part of the Fort Berthold Indian Reservation, N. Dak. -----	172
XXVII. Map of the northern part of the Fort Berthold Indian Reservation, N. Dak., showing outcrops of lignite beds ----- In pocket.	
XXVIII. Map of the southwestern part of the Fort Berthold Indian Reservation, N. Dak., showing outcrops of lignite beds ----- In pocket.	
XXIX. Map of the southern part of the Fort Berthold Indian Reservation, N. Dak., showing outcrops of lignite beds ----- In pocket.	
XXX. Map of New Mexico -----	174
XXXI. A, Bliss sandstone, San Andres Mountains, N. Mex. ; B, Coyote Butte, N. Mex. -----	188
XXXII. A, Bluewater Canyon, N. Mex. ; B, Inscription Rock, N. Mex. -----	188
XXXIII. A, Wingate sandstone at Rito, N. Mex. ; B, Sandstone of Glorieta Mesa, near La Cuesta, N. Mex. -----	188

	Page.
PLATE XXXIV. Sandstones at Navajo Church, N. Mex.....	189
XXXV. A, Navajo and Dakota sandstones at Atarque, N. Mex.; B, Dakota sandstone at Bluewater Falls, N. Mex.....	196
XXXVI. A, Dome near San Ignacio, N. Mex.; B, West front of Sacramento Mountains, N. Mex.....	197
XXXVII. West front of Sandia Mountains at Bernalillo, N. Mex....	218
XXXVIII. Geologic map of Sandia and Manzano mountains and Sierra de los Pinos, N. Mex.....	218
XXXIX. A, Dakota sandstone on west slope of Cerrillos Basin, N. Mex.; B, West front of Chupadera Mesa, N. Mex....	220
XL. Geologic map of Tularosa Basin, N. Mex.....	224
XLI. Pilot Knob on west slope of San Andres Mountains, N. Mex.....	228
XLII. Geologic map of Jornada del Muerto, N. Mex.....	230
XLIII. Geologic map of part of Socorro County, N. Mex.....	234
XLIV. A, Base of Magdalena group east of Socorro, N. Mex.; B, Upturned Magdalena beds east-northeast of So- corro, N. Mex.....	236
XLV. A, Mesa del Yeso, N. Mex.; B, Sierrita Mesa, Naci- miento uplift, N. Mex.....	237
XLVI. A, Pyramid Rock, N. Mex.; B, Uplift at Atarque, N. Mex.....	254
XLVII. A, West slope of Zuni uplift at Nutria, N. Mex.; B, Northwest slope of Zuni uplift east of Gallup, N. Mex.....	255
XLVIII. Geologic map of parts of Valencia and Socorro counties, N. Mex.....	262
XLIX. Sections across Sierra Lucero in Valencia and Socorro counties, N. Mex.....	264
L. Map showing structure of valleys of Rio Salado and Alamosa Creek, Socorro County, N. Mex.....	266
LI. Index map of Oklahoma.....	278
LII. Map showing the geologic structure in a part of Jeffer- son County, Okla.....	284
LIII. Map showing geologic structure in Lacasa area, Tex....	308
LIV. Selected well records in Lacasa area, Tex.....	314
FIGURE 1. Index map of North Dakota showing location of New Salem lignite field.....	2
2. Structure section through New Salem and Sims, N. Dak.....	11
3. Sections showing position of lignite beds in Fort Union forma- tion in New Salem lignite field, N. Dak.....	13
4. Graph showing the heating value of North Dakota lignite as compared with other coals with which it may have to com- pete.....	22
5. Generalized section of Permian "Red Beds" of Oklahoma.....	46
6. Rocks exposed in Cement oil field, Caddo County, Okla.....	47
7. Approximate boundary between marine and nonmarine sedi- ments of basal Permian and upper Pennsylvanian in Kansas, Oklahoma, and Texas.....	59
8. Map showing absence of relation of ridges to structure and other features in Cement oil field, Caddo County, Okla.....	70

	Page.
FIGURE 9. Map of parts of Washington County, Utah, and Mohave County, Ariz -----	88
10. Map of the oil field near Virgin City, Utah -----	94
11. Map of part of the Virgin anticline, Washington County, Utah, showing the Harrisburg and Washington domes -----	100
12. Map of the Bloomington dome, Washington County, Utah -----	103
13. Index map showing location of Fort Berthold Indian Reservation, N. Dak -----	110
14. Diagram showing heating value of North Dakota lignite, compared with that of certain subbituminous and bituminous coals -----	123
15. Sections of lignite bed C, Fort Berthold Indian Reservation, N. Dak., showing characteristics of the bed and of partings --	126
16. Map showing the major structure of northeastern New Mexico --	189
17. Section across Colfax and Union counties, N. Mex -----	190
18. Section from Pedernal Mountain across Guadalupe and Quay counties, N. Mex -----	195
19. Map of Esterito dome, Guadalupe County, N. Mex -----	196
20. Section from south end of Rocky Mountains to Cuervo Butte, Guadalupe County, N. Mex -----	197
21. Generalized sections across the Rocky Mountains in New Mexico --	201
22. Sections across the plateaus of southeastern Santa Fe County, southwestern San Miguel County, and eastern Torraine County, N. Mex -----	202
23. Sections across the Sacramento Cuesta and Guadalupe Mountains, N. Mex -----	208
24. Sketch section of anticlines and fault between Alamogordo and High Rolls, N. Mex -----	209
25. Map showing relation of anticline in Tijeras coal field, N. Mex --	218
26. Sections across the Sanida and Manzano mountains and the Sierra de los Pinos, N. Mex -----	219
27. Sections across Chupadera Mesa, N. Mex -----	222
28. Sections across Tularosa Basin, N. Mex -----	225
29. Log of deep boring at Oscuro, N. Mex -----	228
30. Logs of two railroad wells at Carrizozo, N. Mex -----	228
31. Sections across the Jornada del Muerto, N. Mex -----	230
32. Sections across eastern Socorro County, N. Mex -----	235
33. Sketch section across the Joyita Hills, Socorro County, N. Mex --	240
34. Sections across San Pedro Mountain and Nacimiento Range, N. Mex -----	242
35. Map showing structure in part of Rio Arriba County, N. Mex --	243
36. Section across the plateau in Rio Arriba County, N. Mex -----	245
37. Section along San Juan River, San Juan County, N. Mex -----	246
38. Geologic sketch map of part of McKinley County, N. Mex -----	248
39. Map showing structure of part of northwestern New Mexico --	255
40. Sections across the Zuni Mountain uplift, N. Mex -----	256
41. Sections across the Gallup-Zuni Basin, N. Mex -----	258
42. Section across north-central Socorro County, N. Mex -----	267
43. Section from Mimbres Mountains eastward through Kingston and Hillsboro, N. Mex -----	269
44. Sections across the Florida Mountains, Luna County, N. Mex --	271

ILLUSTRATIONS.

	Page.
FIGURE 45. Section through the Snake Hills, southwest of Deming, Luna County, N. Mex.-----	272
46. Section through the Klondike Hills, Luna County, N. Mex.-----	273
47. Section across the Victorio Mountains, south of Gage, Luna County, N. Mex.-----	273
48. Sketch section across the north end of the Big Hatchet Mountains, Hidalgo County, N. Mex.-----	274
49. Diagram showing principal sandstone and conglomerate beds that were found serviceable in mapping the structure of a part of Jefferson County, Okla.-----	281
50. Key map of north-central Texas showing location of Lacasa area -----	303
51. Columnar section of rocks exposed in Lacasa area, Tex.-----	305
52. Key map of Lacasa area, Tex., showing locations of wells whose logs are given in Plate LIV.-----	312



CONTRIBUTIONS TO ECONOMIC GEOLOGY, 1921.

PART II. MINERAL FUELS.

DAVID WHITE and M. R. CAMPBELL, *Geologists in charge.*

INTRODUCTION.

The Survey's "Contributions to economic geology" have been published annually since 1902. In 1906 the increase in the number of papers coming under this classification made it necessary to divide the contributions into two parts, one including papers on metals and nonmetals except fuels and the other including papers on mineral fuels. In 1915 the year included in the title was changed from the year in which the field work reported in these papers was done to the year of publication, and in consequence there was no volume entitled "Contributions to economic geology, 1914." The subjoined table gives a summary of these bulletins.

United States Geological Survey "Contributions to economic geology."

Date in title.	Date of publication. ^a	Bulletin No.	Date in title.	Date of publication. ^a	Bulletin No.
1902	1903	213	1913, Part I.	1915	580
1903	1904	225	Part II.	1915	581
1904	1905	260	1915, Part I.	1916	620
1905	1906	285	Part II.	1916	621
1906, Part I.	1907	315	1916, Part I.	1917	640
Part II.	1907	316	Part II.	1917	641
1907, Part I.	1908	340	1917, Part I.	1918	660
Part II.	1909	341	Part II.	1918	661
1908, Part I.	1909	380	1918, Part I.	1919	690
Part II.	1910	381	Part II.	1919	691
1909, Part I.	1910	430	1919, Part I.	1920	710
Part II.	1911	431	Part II.	1920	711
1910, Part I.	1911	470	1920, Part I.	1921	715
Part II.	1912	471	Part II.	1921	716
1911, Part I.	1913	530	1921, Part I.	1922	725
Part II.	1913	531	Part II.	1922	726
1912, Part I.	1914	540			
Part II.	1914	541			

^a The date given is that of the complete volume; beginning with Bulletin 285, the papers have been issued as advance chapters as soon as they were ready.

As a subtitle indicates, most of the papers in these volumes are of three classes—(1) short papers describing as thoroughly as conditions will permit areas or deposits on which no other report is

likely to be prepared; (2) brief notes on mining districts or economic deposits whose examination has been merely incidental to other work; and (3) preliminary reports on economic investigations the results of which are to be published later in more detailed form.

Although these papers set forth mainly the practical results of economic investigations they include brief theoretical discussions and summary statements of conclusions if these appear to require prompt publication.