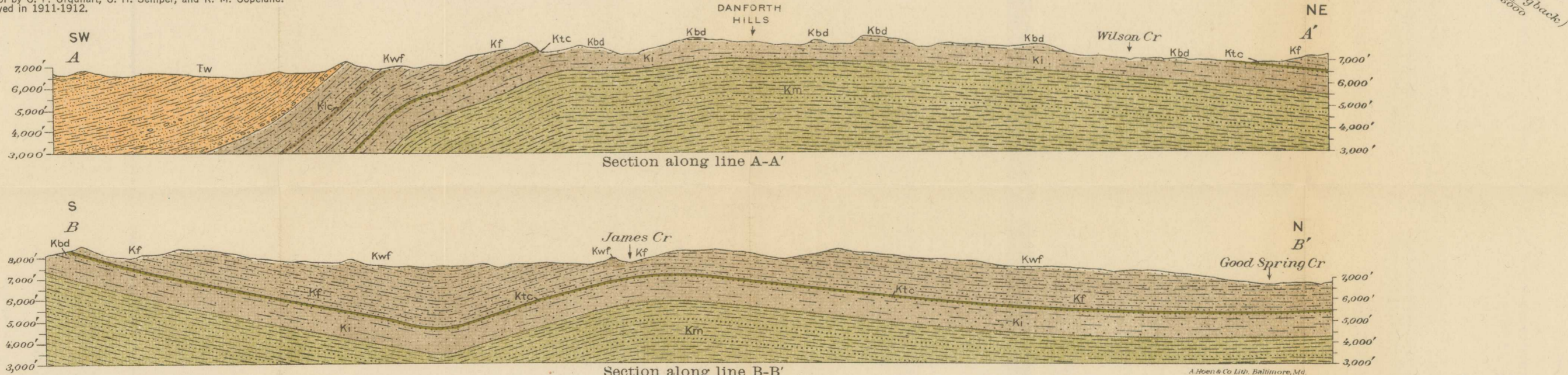


EXPLANATION

- Recent**
- Quaternary**
- Qal Alluvium and terrace deposits
- Eocene**
- Tertiary**
- Tw Wasatch formation  
(Chiefly sandstone and sandy shale with some lignite and lenses of conglomerate; varicolored clay, and shale at top; conglomerate at base)
- Mesozoic group**
- Upper Cretaceous**
- UNCONFORMITY**
- Kwf Williams Fork formation  
(Alternating series of massive and shaly sandstones, sandy and black carbonaceous shale, and coal beds. The Lion Canyon sandstone member, Klc, is mapped in part; the Lion Canyon and Gulp coal groups lie respectively above and below the Lion Canyon sandstone member; the Fairplay coal group, Kf, occupies the lower part of formation)
- Ktc Kls Ktc Kls Kt Formation  
(Massive sandstone, interbedded with shaly sandstone, sandy shale, black carbonaceous shale, and a few coal beds, especially toward the top; Trout Creek sandstone member, Ktc, at top; the Black Diamond coal group, Kbd, in the upper 100 feet of the formation; and the lower coal group in the lower 300 feet)
- Km Mancos shale  
(Chiefly clay shale with some thin bedded sandstone; ridge-making shaly and sandy beds in lower part; brown to black platy shale with rectangular joint planes at base)
- Kd Dakota (?) sandstone  
(Chiefly quartzite and quartzitic sandstone with a basalt conglomerate)
- Lower Cretaceous (?)**
- Cretaceous (?)**
- Kms Morrison formation  
(Greenish sandy shale and indurated clay)
- Structure contours  
On top of Trout Creek sandstone member of the formation  
Contour interval 500 feet. Datum is mean sea level. Broken lines used where formation has been removed by erosion
- Fault  
D shows downthrown side
- Strike and dip of rocks  
N 45° E
- Outcrop of coal bed  
Figures show location of measured section of bed on plates or in text
- Coal mine
- Coal prospect
- Abandoned well
- Location of dinosaur fossils

R. B. Marshall, Chief Geographer,  
Sledge Tatum, Geographer in charge,  
Topography by Gilbert Young and C. W. Rowell,  
Control by C. F. Urichart, C. H. Semper, and R. M. Copeland.  
Surveyed in 1911-1912.

Geology surveyed by E. T. Hancock in 1911 and by J. B. Eby in 1923 and 1924



TOPOGRAPHIC AND GEOLOGIC MAP AND STRUCTURE CROSS SECTIONS  
OF MEEKER QUADRANGLE, COLORADO

