

6-E.
N.

EXPLANATION

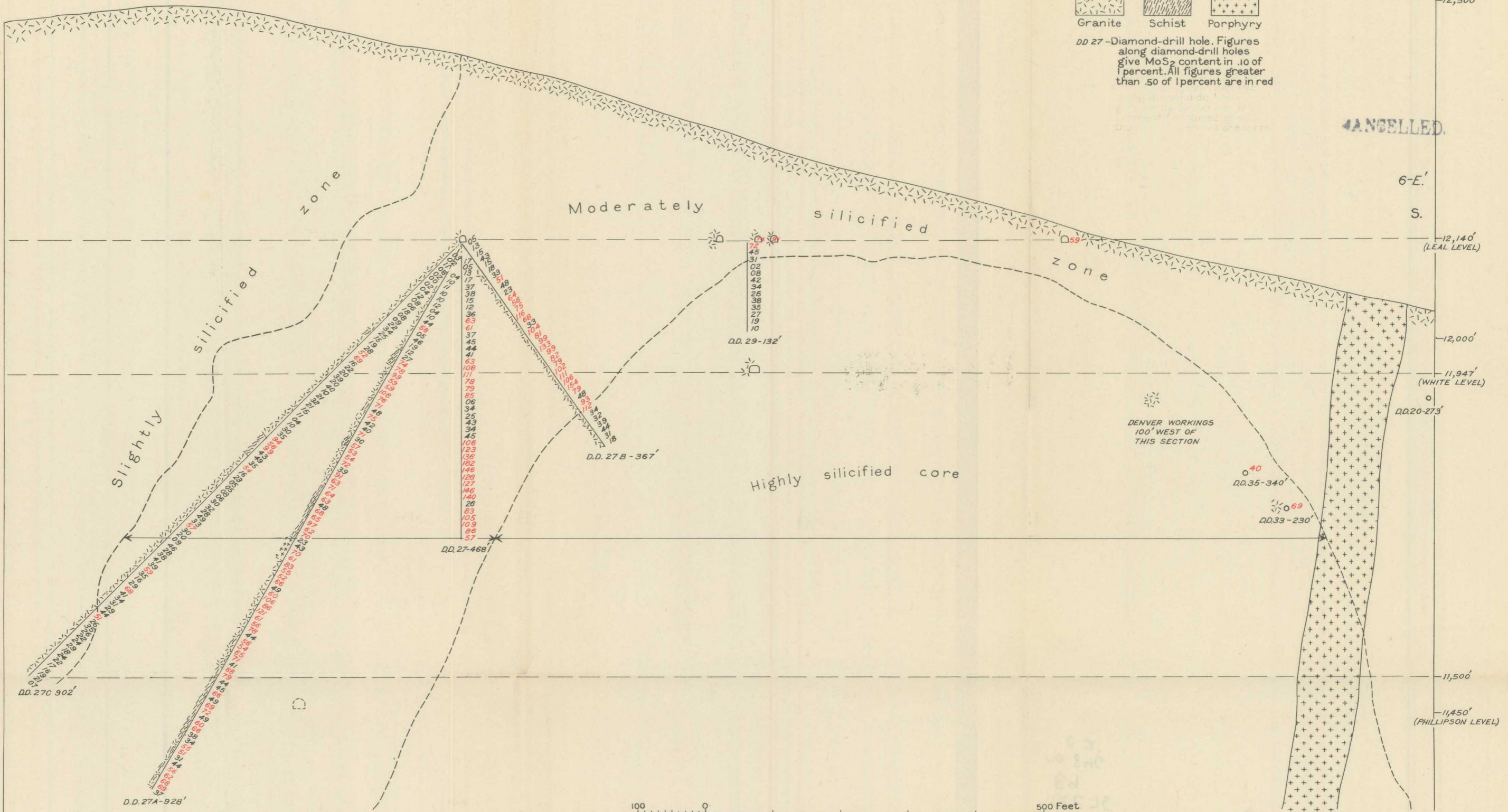
- Granite
- Schist
- Porphyry

DD 27—Diamond-drill hole. Figures along diamond-drill holes give MoS₂ content in .10 of 1 percent. All figures greater than .50 of 1 percent are in red.

ELEVATION ABOVE SEA LEVEL
12,500'

CANCELLED.

6-E.
S.



CROSS SECTION SHOWING MOLYBDENUM DEPOSIT ALONG LINE 6E-6E'

Copyright © 1914
 The United States
 Geological Survey
 Washington, D. C.