

UNCLASSIFIED

EXPLANATION

SEDIMENTARY ROCKS

Recent

- Thermal-spring deposits
- Glacial and stream deposits

Upper Cretaceous (?) and Recent

- Greenstone tuff
- UNCONFORMITY
- Argillite and graywacke

PRE-CRETACEOUS (?)

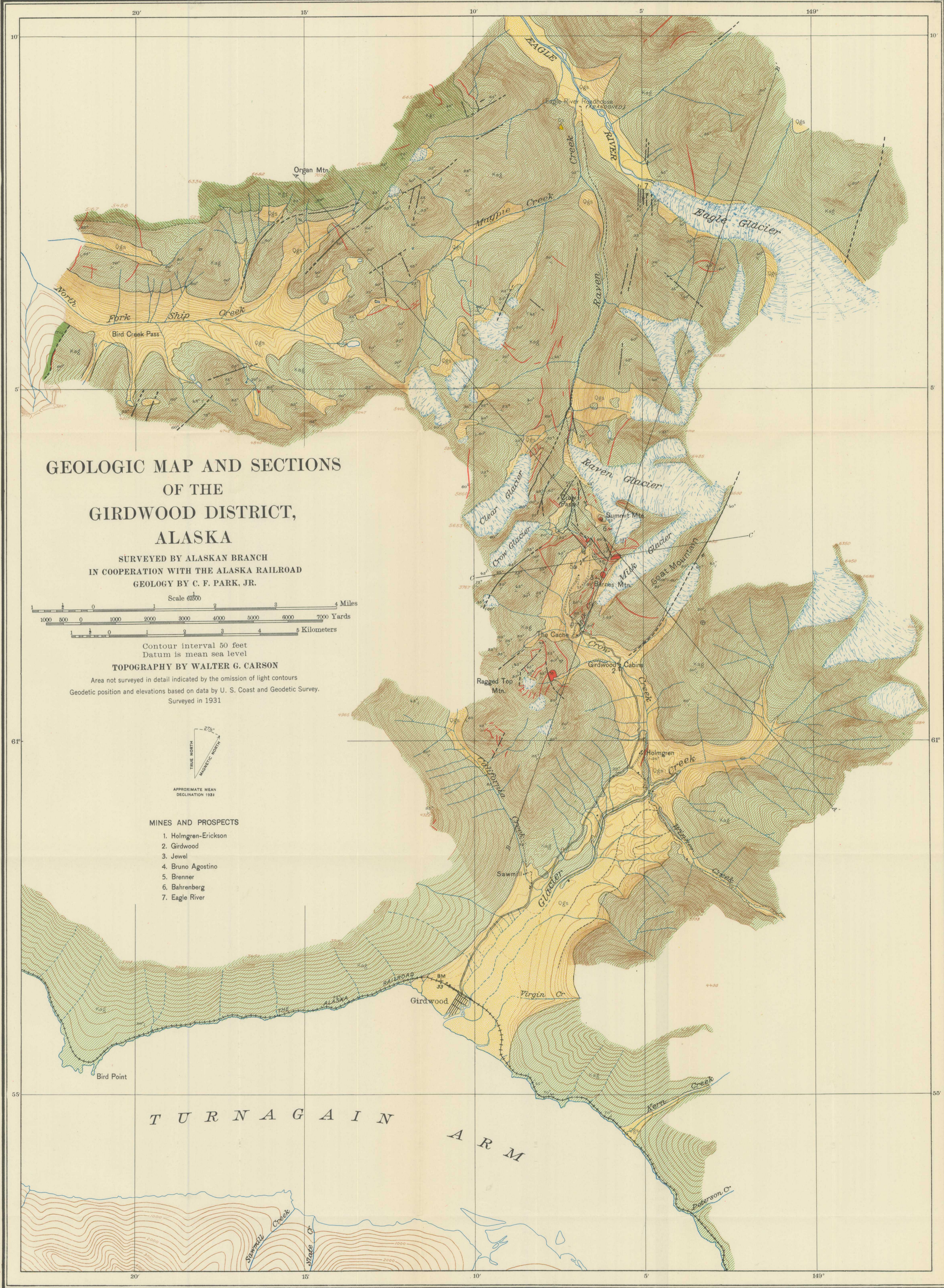
- Undifferentiated metamorphic rocks

IGNEOUS ROCKS

- Post-Cretaceous (Quartz diorite, diorite, and dioritic apolite, pipes, dikes, and sills)

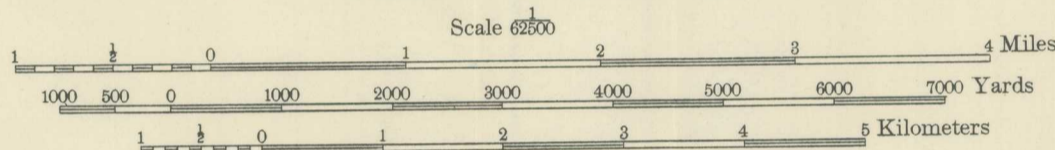
Geological Symbols

- Fault
- Strike and dip of rocks
- Strike of vertical rocks
- Horizontal bed

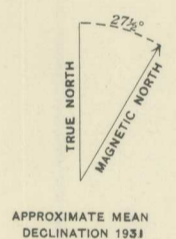


**GEOLOGIC MAP AND SECTIONS
OF THE
GIRDWOOD DISTRICT,
ALASKA**

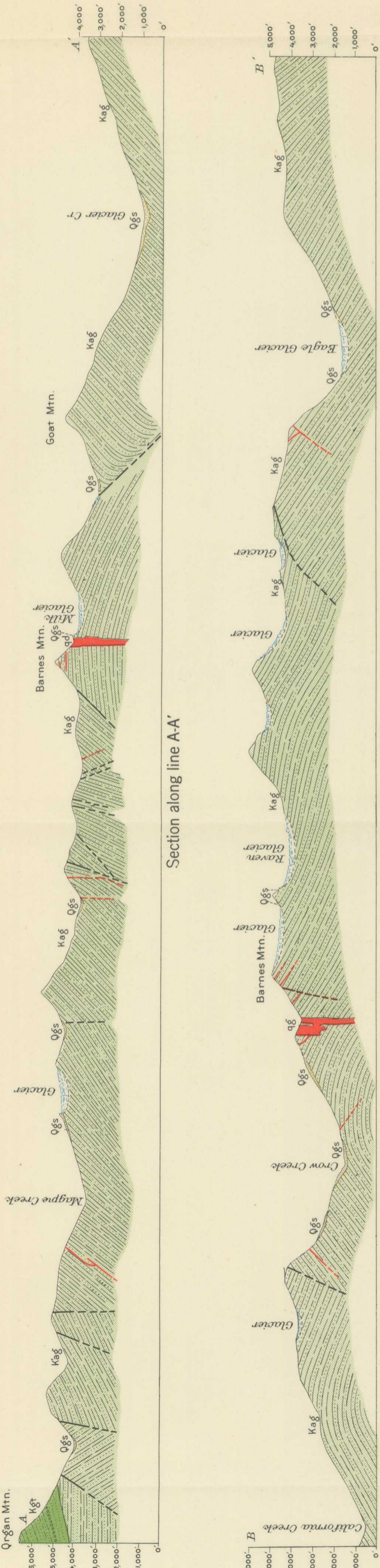
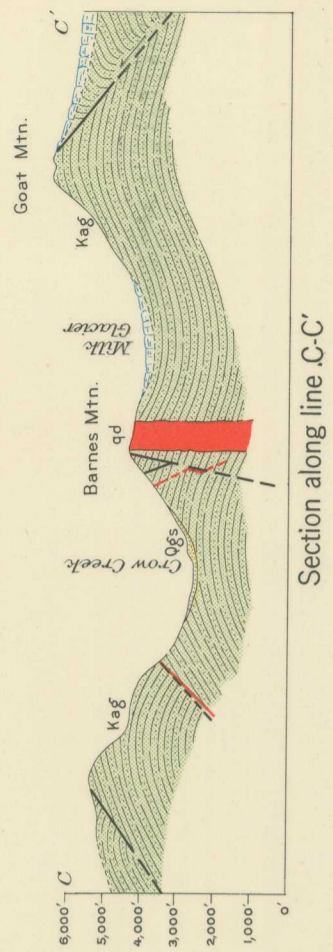
SURVEYED BY ALASKAN BRANCH
IN COOPERATION WITH THE ALASKA RAILROAD
GEOLOGY BY C. F. PARK, JR.



TOPOGRAPHY BY WALTER G. CARSON
Area not surveyed in detail indicated by the omission of light contours
Geodetic position and elevations based on data by U. S. Coast and Geodetic Survey.
Surveyed in 1931



- MINES AND PROSPECTS**
1. Holmgren-Erickson
 2. Girdwood
 3. Jewel
 4. Bruno Agostino
 5. Brenner
 6. Bahrenberg
 7. Eagle River



T U R N A G A I N
A R M