

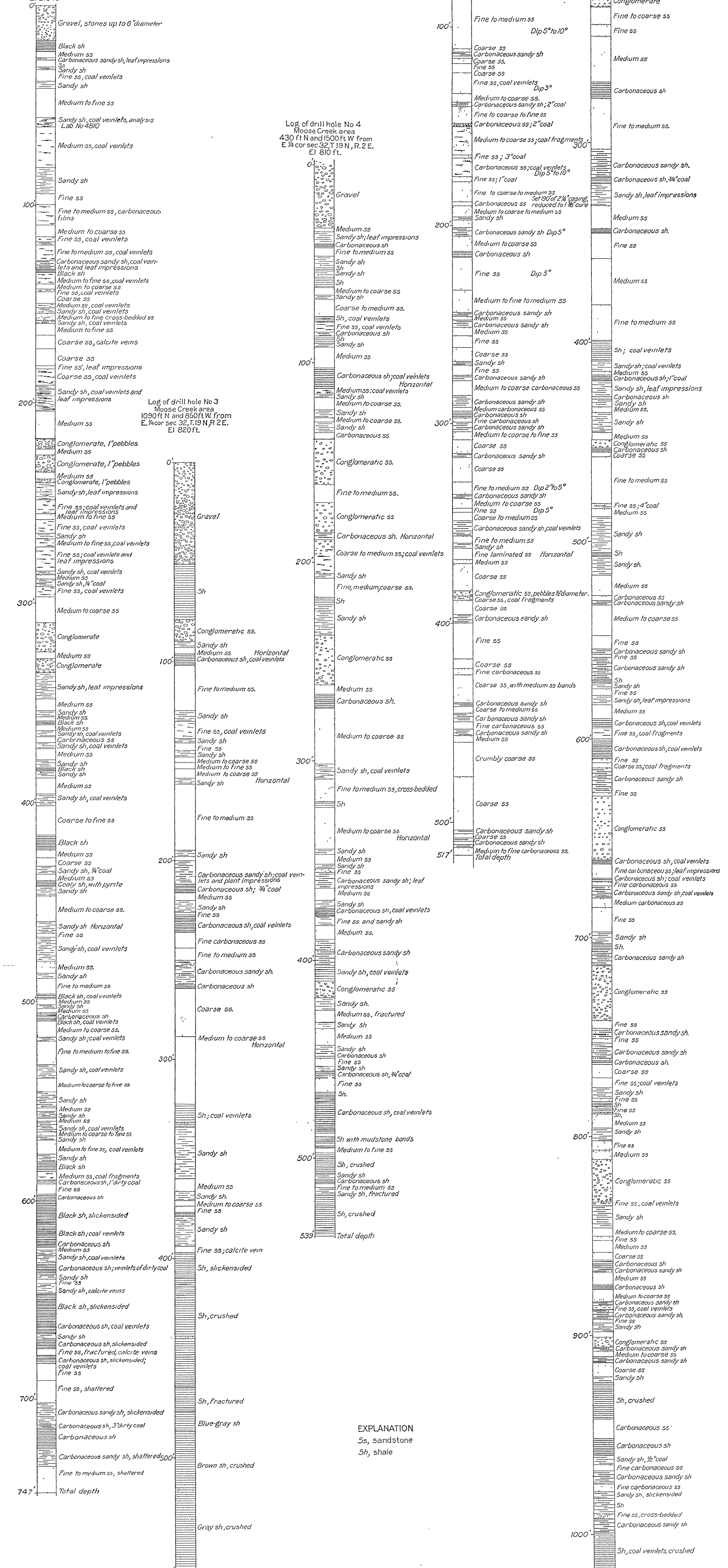
Log of drill hole No 2
Moose Creek area
490 ft N and 210 ft E from
S 1/4 cor sec 32, T.19N, R.2 E.
El 840 ft

Log of drill hole No 5
Moose Creek area
460 ft S and 1560 ft W from
E 1/4 cor sec 32, T.19N, R.2 E.
El 810 ft

Log of drill hole No 4
Moose Creek area
430 ft N and 1500 ft W from
E 1/4 cor sec 32, T.19N, R.2 E.
El 810 ft

Log of drill hole No 3
Moose Creek area
1090 ft N and 850 ft W from
E 1/4 cor sec 32, T.19N, R.2 E.
El 820 ft

Log of drill hole No 1
Moose Creek area
320 ft N and 40 ft W from
E 1/4 cor sec 32, T.19N, R.2 E.
El 810 ft



LOGS OF DIAMOND-DRILL HOLES IN THE MOOSE CREEK AREA.