

INDEX OF MINES AND PROSPECTS

- NUMERICAL ORDER**
- Black Eagle
 - Black Queen
 - Catapha
 - Evening Star
 - Gold Pan vein
 - Lizard Lake
 - Inez tunnel
 - Lucky Boy
 - Miwauakee
 - Undine
 - Pioneer (Warrior) tunnel
 - Sheep Mountain tunnel
 - Tennessee of the Black Queen group
 - Lead King
 - Daisy
 - Belle of Titusville
 - Burt
 - Shear Mountain tunnel
 - Lead Bullet
 - Skyline
 - Yule Creek
 - Crystal Mountain tunnel
 - Harris-Farley
 - High Tide
 - North Pole
 - Mexican Cut
 - Blue Jay tunnel
 - Rockett tunnel
 - Brooklyn tunnel
 - Whisper ledge
 - Baron's tunnel
 - Hercules Ajax
 - Eureka
 - Head of Yule Creek
 - Bennet tunnel
- ALPHABETIC ORDER**
- Ajax. See Hercules-Ajax, 33.
 Baron's tunnel, 32.
 Bear Mountain tunnel, 18.
 Belle of Titusville, 16.
 Bennet tunnel, 36.
 Black Eagle, 1.
 Black Queen, 2.
 Blue Jay tunnel, 27.
 Brooklyn tunnel, 30.
 Burt, 17.
 Catapha, 3.
 Crystal Mountain tunnel, 22.
 Daisy, 15.
 Eagle claim. See Skyline, 20.
 Eureka, 34.
 Evening Star, 4.
 Gold Pan vein, 5.
 Harris-Farley, 23.
 Head of Yule Creek, 35.
 Hercules Ajax, 33.
 High Tide, 24.
 Homestake tunnel, 29.
 Inez tunnel, 7.
 Lead Bullet, 19.
 Lead King, 14.
 Lizard Lake, 6.
 Lucky Boy, 8.
 Mexican Cut, 26.
 Miwauakee, 9.
 North Pole, 25.
 Pioneer (Warrior) tunnel, 11.
 Rockett tunnel, 28.
 Sheep Mountain tunnel, 12.
 Tennessee of the Black Queen group, 13.
 Undine, 10.
 Whisper ledge, 31.
 Yule Creek, 21.



EXPLANATION

IGNEOUS ROCKS

STOCKS

- Tgd Granodiorite (Snowmass Mountain stock)
- Tgr Granite (Treasure Mountain stock)

DIKES AND SILLS

- Lamprophyric rocks
- Porphyry of Lincoln type
- Felsite porphyry
- Gabbro porphyry

SEDIMENTARY ROCKS

- Mancos shale (Laramie member of Niobrara age (Ks))
- Dakota (?) quartzite
- Morrison formation (Underlying Dakota sandstone included in place)
- Maroon formation
- Hermosa (?) formation
- Leadville limestone
- Chaffee formation (Dyer and Purkin members undifferentiated)
- Fremont limestone, Harding quartzite, and Manitou dolomite
- Sawatch quartzite (Quartzite overlain by Purkin shale member (Cs))
- Gneiss

UNCONFORMITY

- Cm
- Ch
- Om

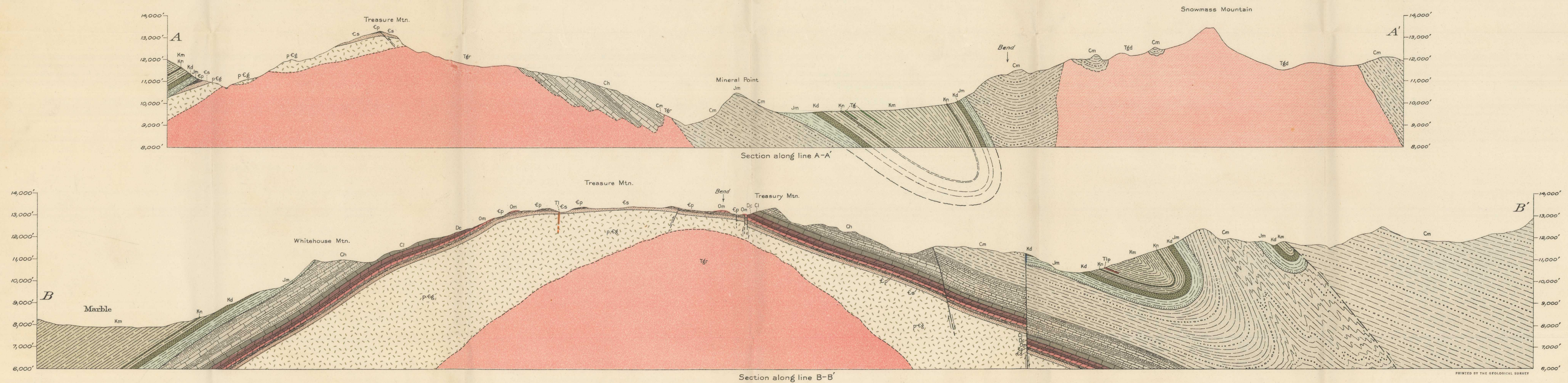
Geological Eras: TERTIARY, CRETACEOUS, JURASSIC, CARBONIFEROUS, DEVONIAN, ONDOLITHIC, CAMBRIAN, PRE-CAMBRIAN.

Structural Features:

- Faults (D, shows downthrown side; T, overthrust side)
- Strike and dip of beds
- Vein
- Vertical dip
- Mine tunnel
- Prospect (Numbers refer to list on left side of map)

Topography from Geological Survey map of Snowmass Mountain quadrangle. Enlarged from original drawing on 1:48,000 scale.

Geology by John W. Vanderwilt



GEOLOGIC MAP AND SECTIONS OF SNOWMASS MOUNTAIN AREA, COLORADO

Scale 1:50,000
 Contour interval 50 feet
 Elevation in meters sea level.
 1937