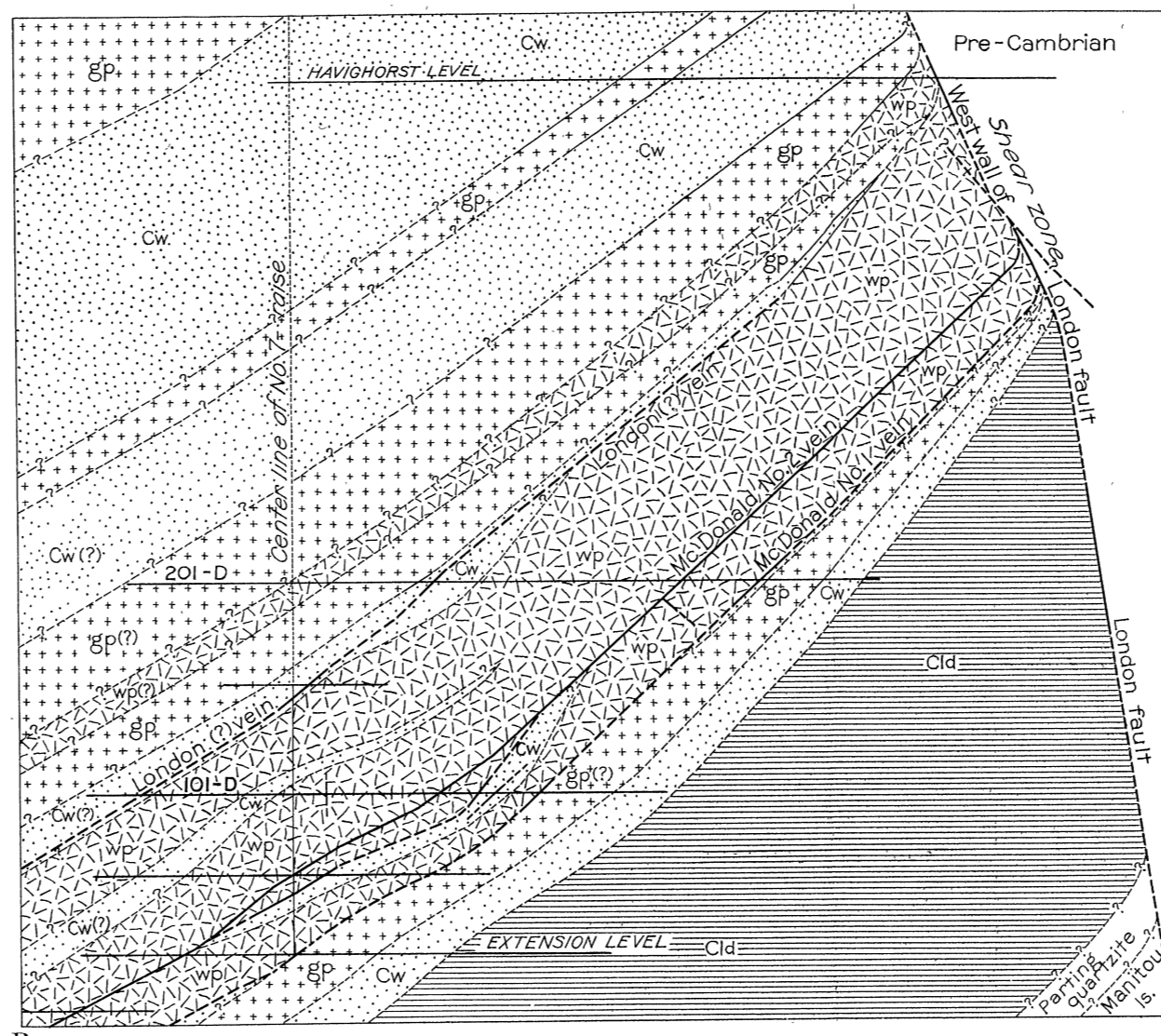
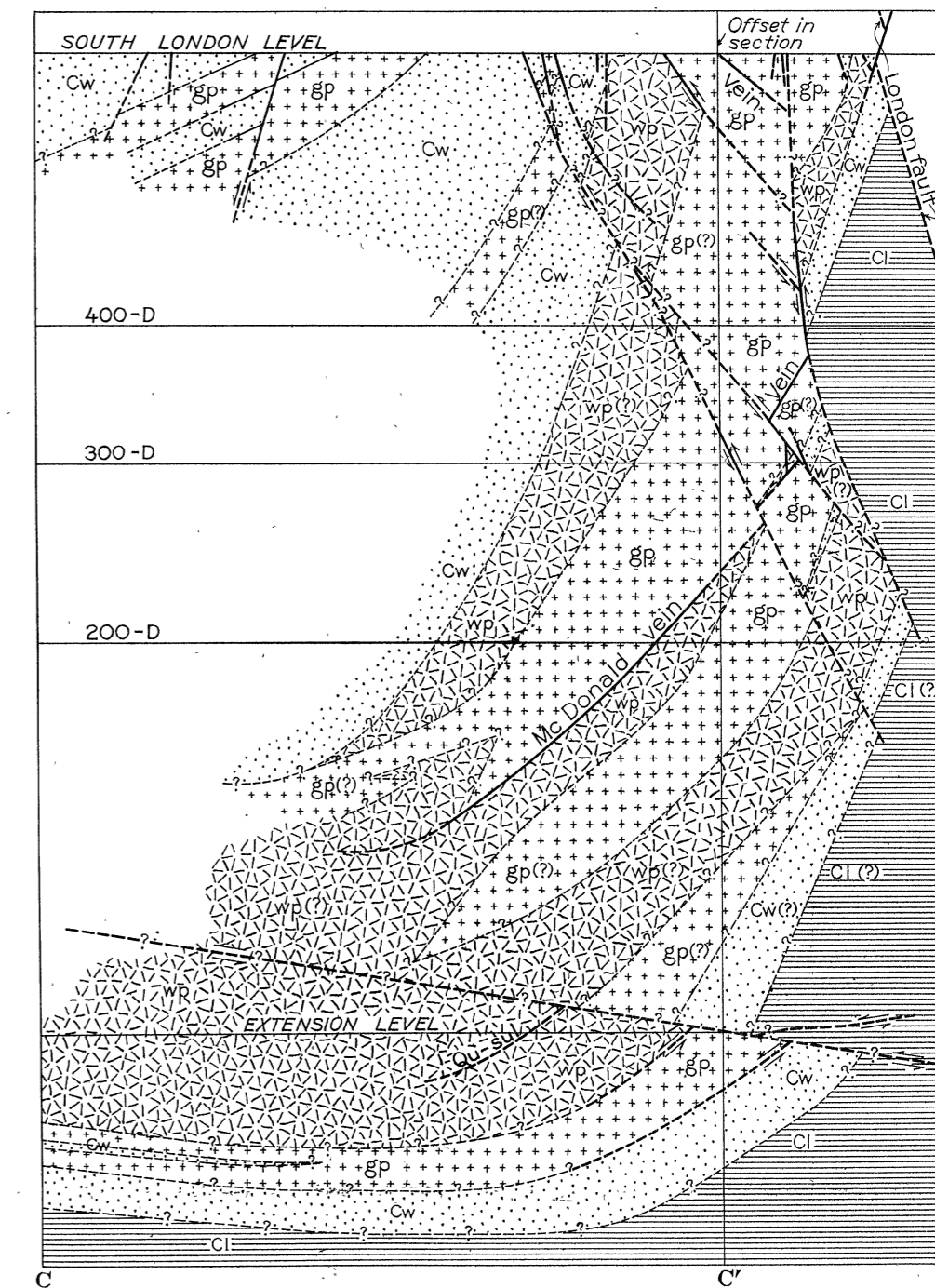


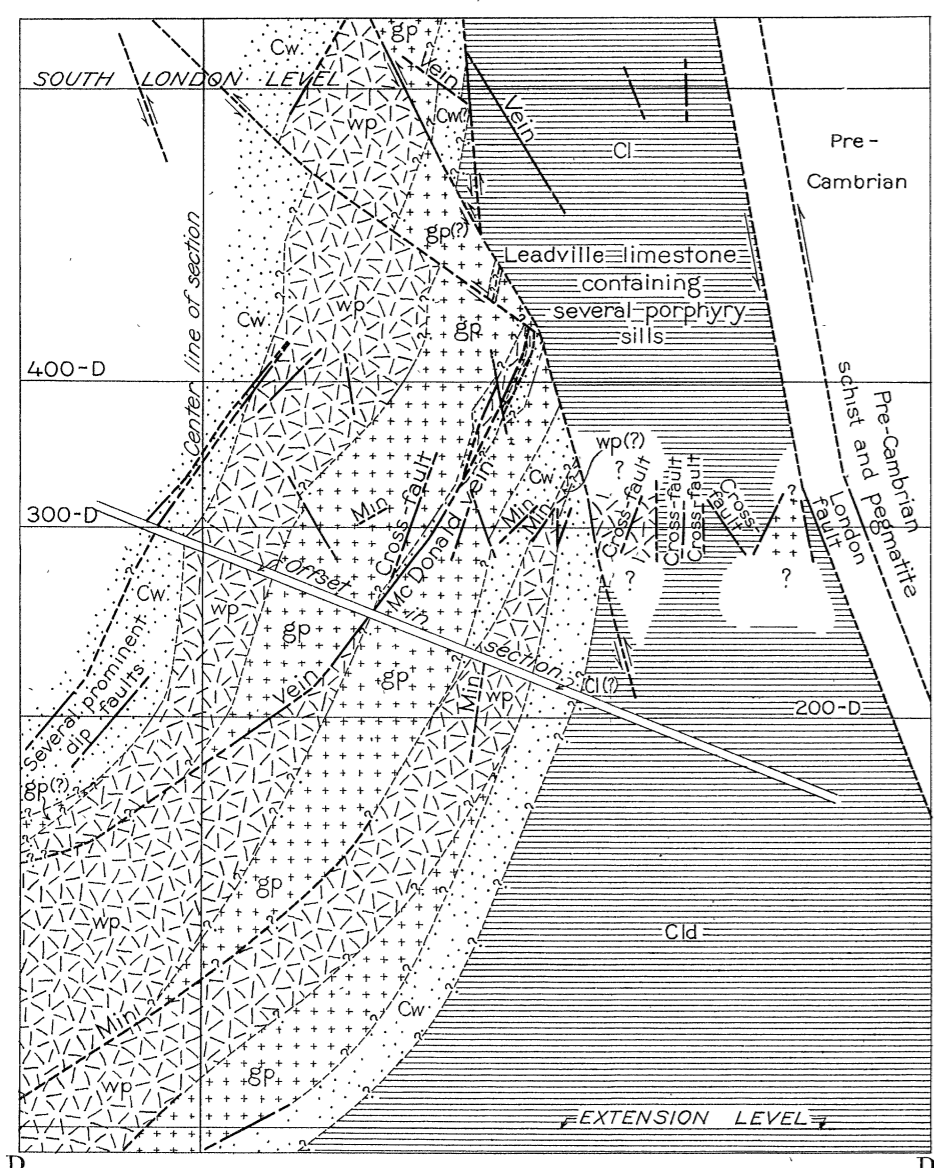
SECTION ALONG LINE A-A'



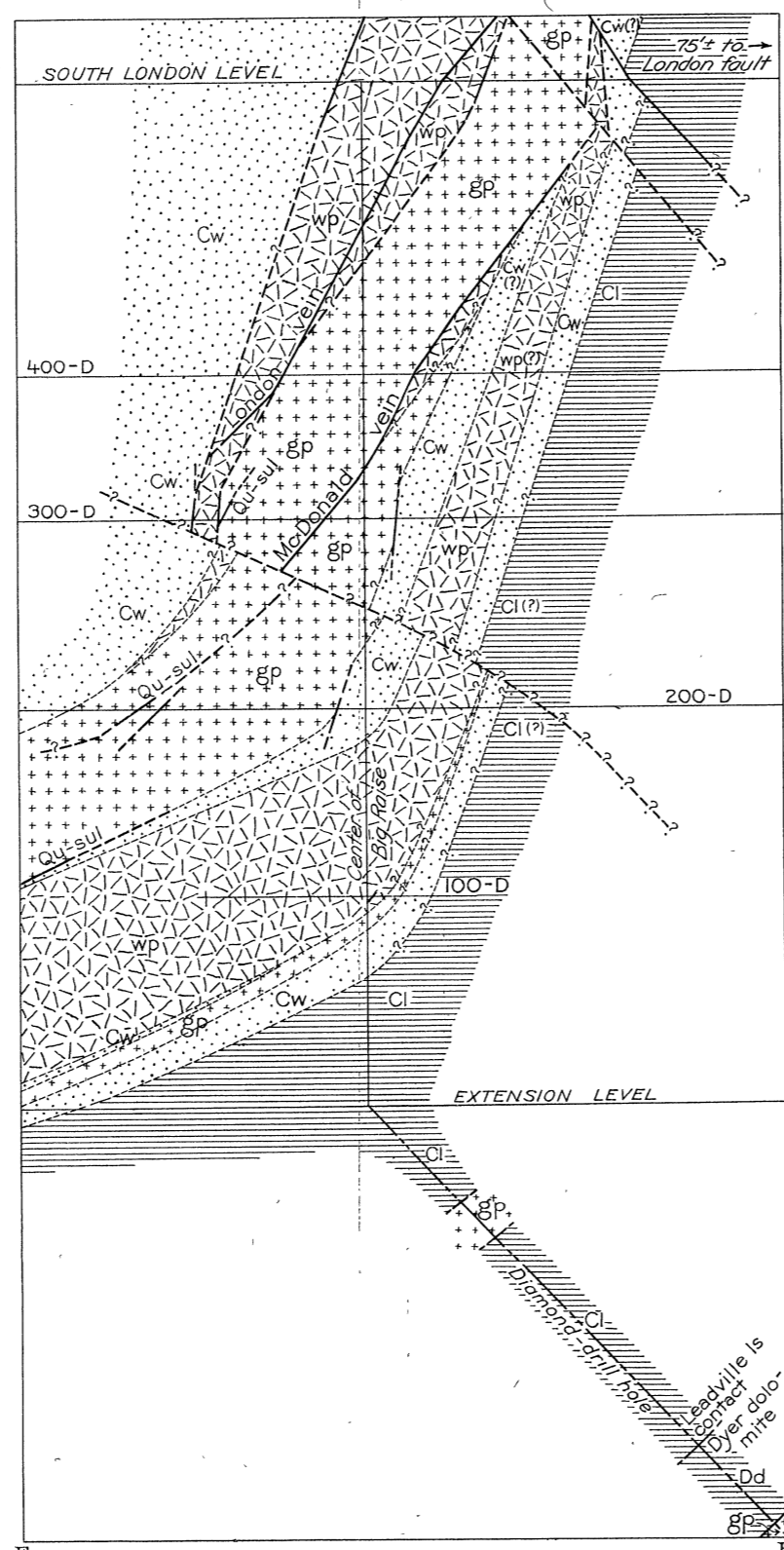
SECTION ALONG LINE B-B'



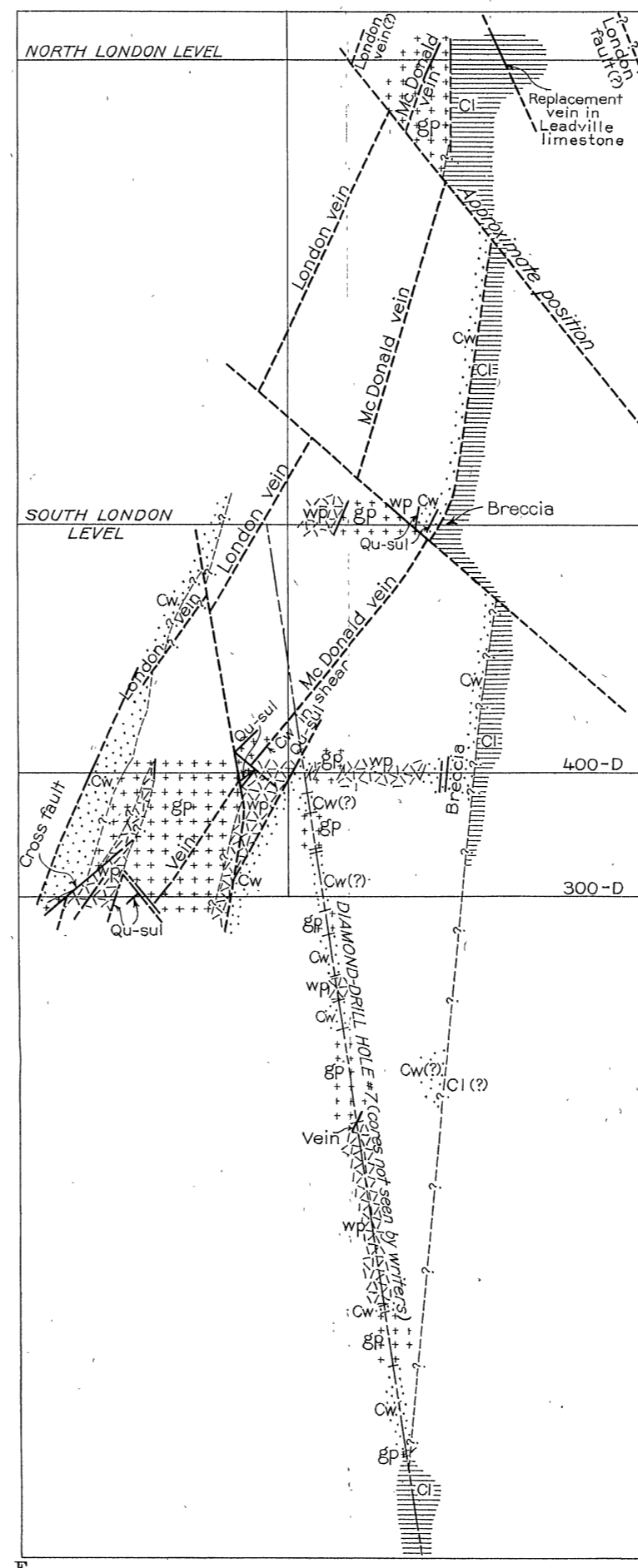
SECTION ALONG LINE C-C'



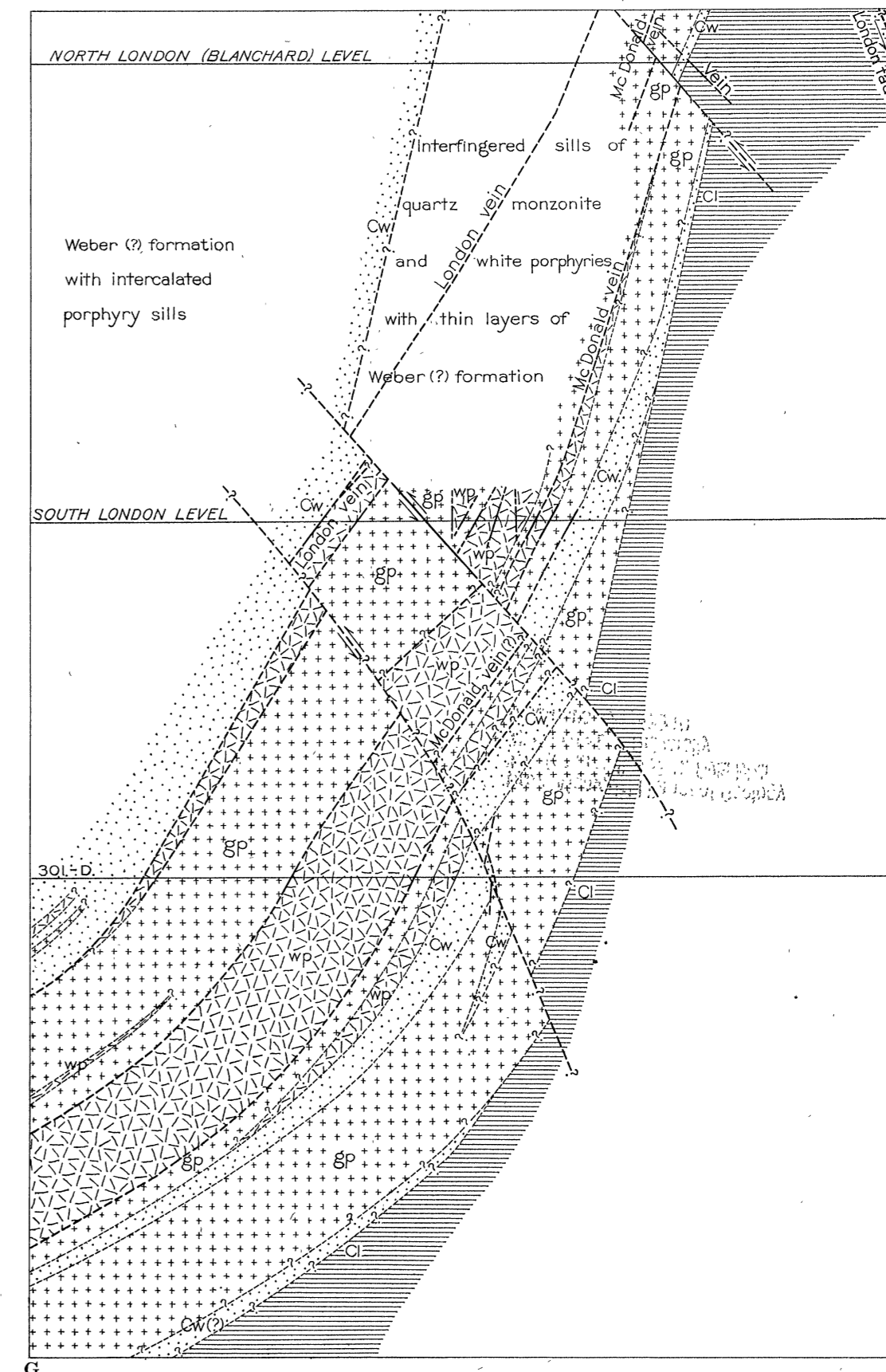
SECTION ALONG LINE D-D'



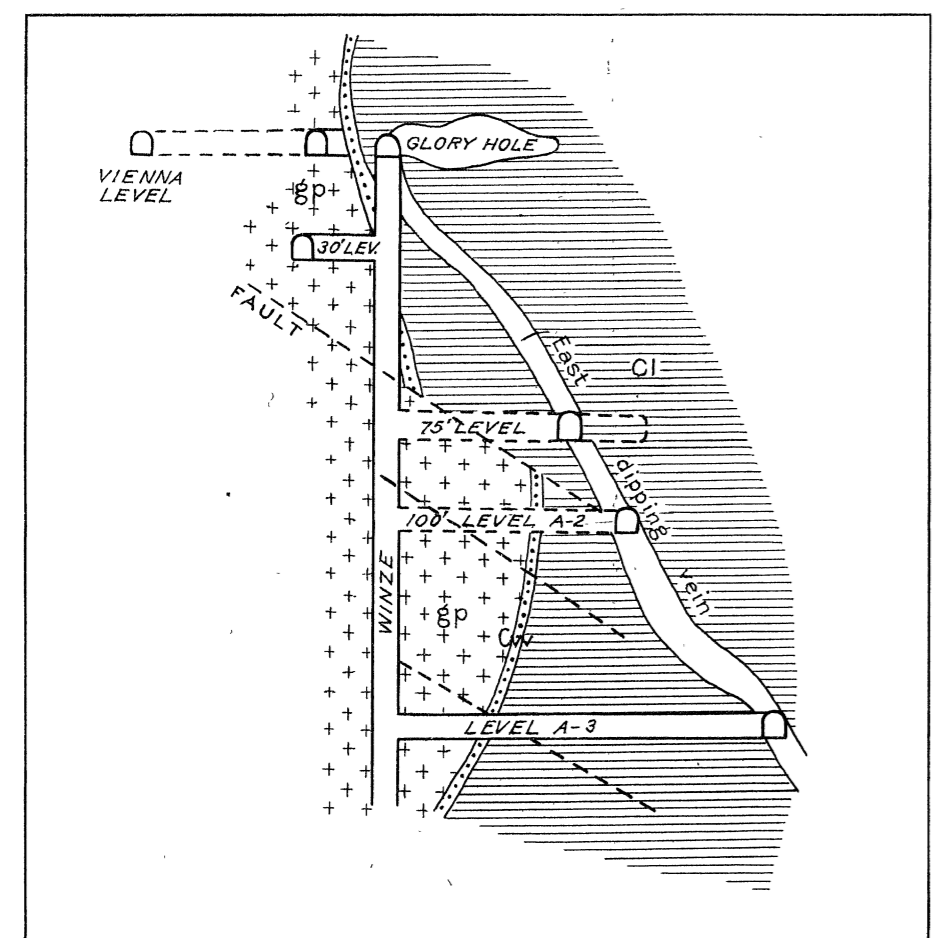
SECTION ALONG LINE E-E'



SECTION ALONG LINE F-F'



SECTION ALONG LINE G-G'



SECTION THROUGH SOUTH SIDE WINZE (by Frank A. Aicher)

**EXPLANATION**

<b>INTRUSIVE ROCKS</b>	<b>SEDIMENTARY ROCKS</b>
gp—Gray porphyry	Cw—Weber (?) formation
wp—White porphyry	Cl—Leadville limestone
	Cld—Leadville limestone and Dyer dolomite member of Chaffee formation
	Dd—Dyer dolomite member of Chaffee formation
	Qu-sul—Quartz-sulphide
	Min—Mineralized rock or vein

Locations of sections shown on Plate 6

SECTIONS A-A' TO G-G' AND SECTIONS THROUGH SOUTH-SIDE WINZE OF LONDON MINE

