



**EXPLANATION**

**QUATERNARY**

Qal.  
Alluvium and gravel terraces  
(Gravel, sand, silt, and slightly water-worn colluvium)

**IGNEOUS ROCKS**

gd.  
Granodiorite  
(Light-colored medium-grained rock with plagioclase, quartz, orthoclase, and biotite)

p  
Peridotite and serpentine  
(Mostly dunite, slightly serpentinized)

qd.  
Quartz diorite  
(Gray medium-grained rock with plagioclase, quartz, hornblende, and biotite)

**METAMORPHIC ROCKS**

Younger metamorphic rocks and quartz diorite  
(Undifferentiated)

ym  
Younger metamorphic rocks  
(Undifferentiated metavolcanics, shale, quartzite, and marble)

om  
Older metamorphic rocks  
(Mica, chlorite, and hornblende schist)

Contacts

Approximate contacts

Hidden contacts

Slide contacts

Strike and dip of bedding

Strike and dip of schistosity, foliation, and banding or doubtful bedding

Strike of vertical schistosity or foliation

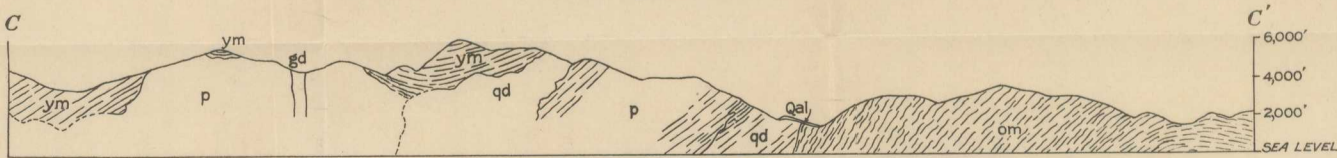
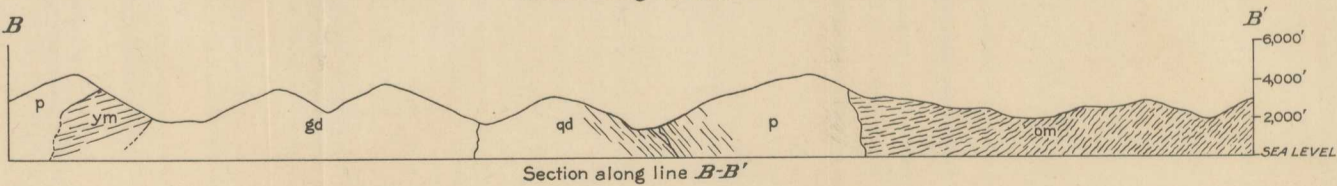
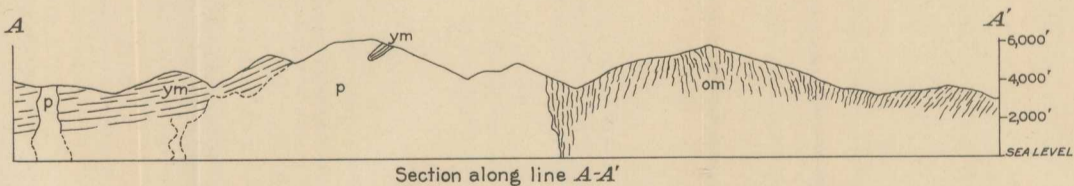
Chromite mines and prospects

**LIST OF MINES AND PROSPECTS**

- 1 Barton claim
- 2 (Name unknown)
- 3 Seiad Creek deposit
- 4 Dolbear mine
- 5 Fairview group of claims
- 6 Neptune (Napatama?) claim
- 7 Liberty claim
- 8 Jumbo claim
- 9 Red Butte claim
- 10 Octopus claim
- 11 Black Spot No. 1
- 12 Black Spot No. 2
- 13 (Name unknown)

Base from U.S. Geological Survey topographic map

Geology by G.A. Rynearson and C.T. Smith



PRELIMINARY GEOLOGIC MAP AND SECTIONS OF THE NORTHEASTERN PART OF THE SEIAD QUADRANGLE, SISKIYOU COUNTY, CALIF.

