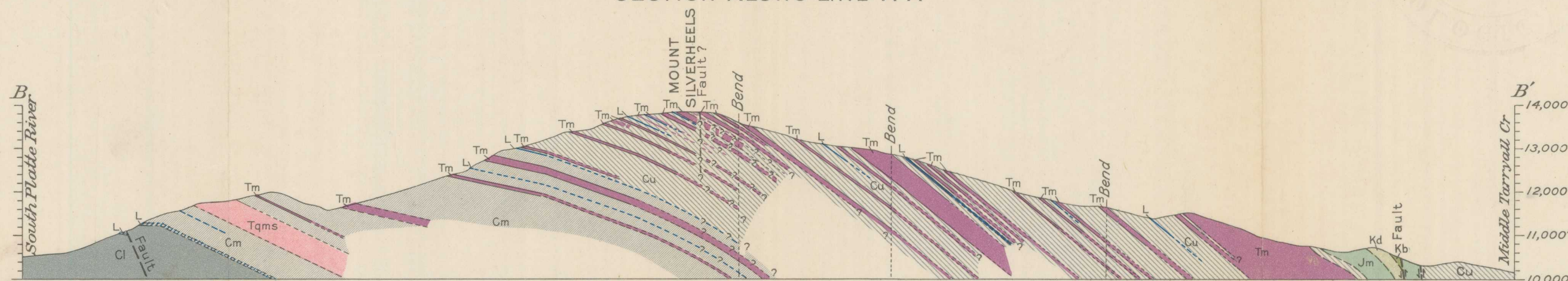
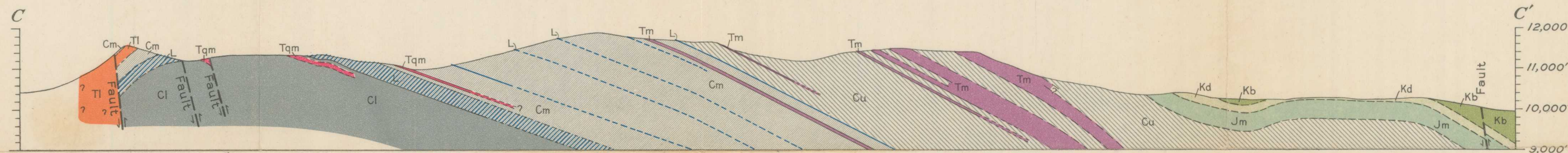


SECTION ALONG LINE A-A'



SECTION ALONG LINE B-B'

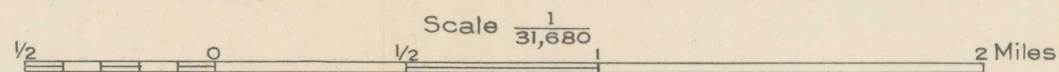


SECTION ALONG LINE C-C'

GEOLOGIC SECTIONS OF BEAVER-TARRYALL AREA, PARK COUNTY, COLORADO

EXPLANATION OF LETTER SYMBOLS

TI, Lincoln porphyry; Tqm, Quartz monzonite porphyry; with alternating layers of sedimentary rocks and igneous sills (Tqms); Tm, Monzonite porphyry; Kb, Benton shale; Kd, Dakota sandstone; Jm, Morrison formation; Cu, Cm, Cl, Upper, middle, and lower divisions of the Pennsylvanian and Permian with limestone beds and zone (L).



1942

928-929
GEO
QE75
B9
Copy 2

Orton Memorial Library of Geology
180 Orton Hall, 155 S. Oval Mall
The Ohio State University
Columbus, OH 43210