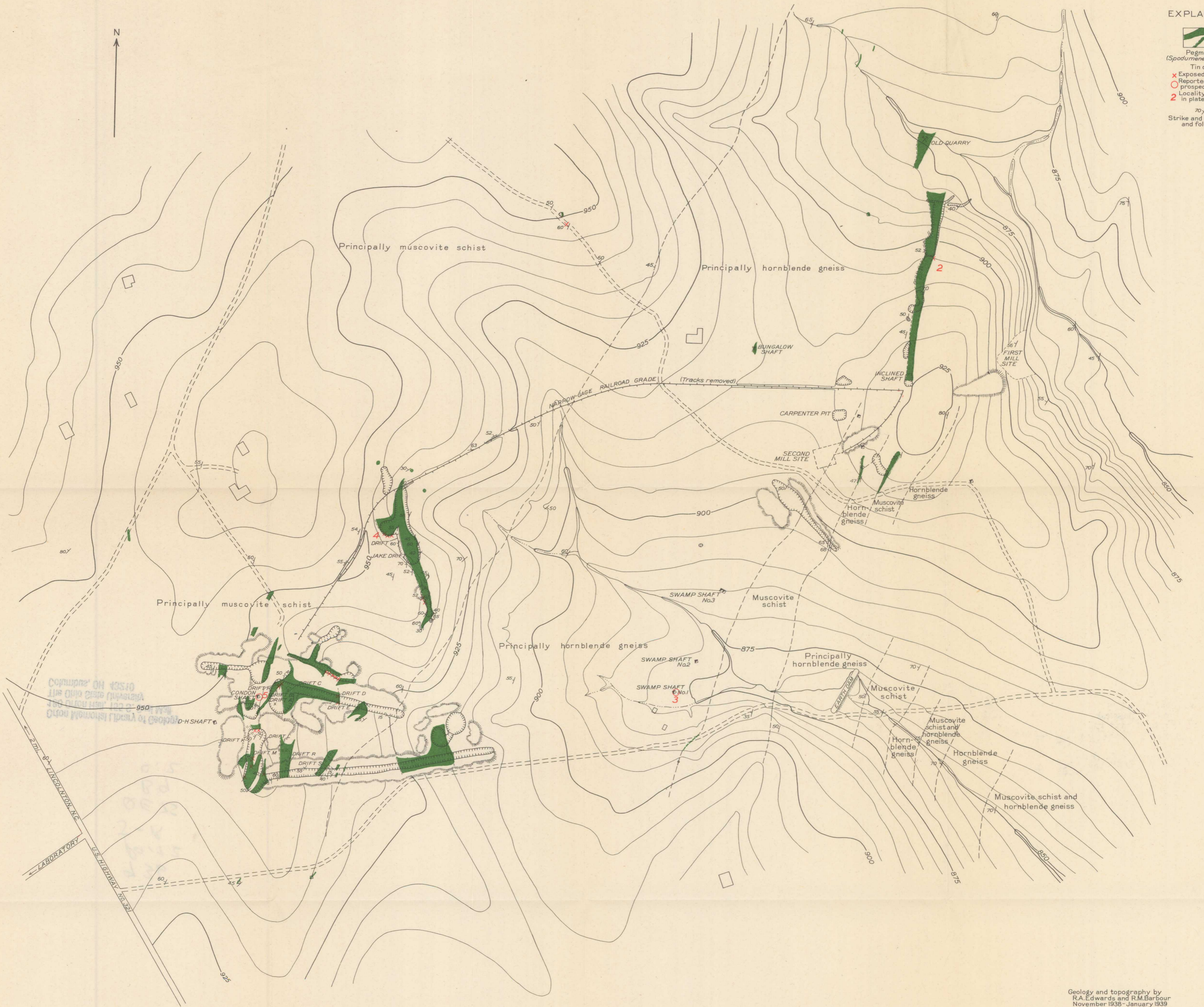


EXPLANATION

-  Pegmatite (Spodumene-bearing)
-  Tin ore Exposed in place
-  Reported from previous prospecting and mining
-  Locality number used in plate 38 and table 18
-  Strike and dip of beds and foliation



Geology and topography by R.A. Edwards and R.M. Barbour November 1938 - January 1939

PLAN OF WORKINGS AND PEGMATITE BODIES EXPOSED ON PROPERTY OF THE KA-MI-TIN CONCENTRATING CO., 2 MILES SOUTHEAST OF LINCOLNTON, NORTH CAROLINA