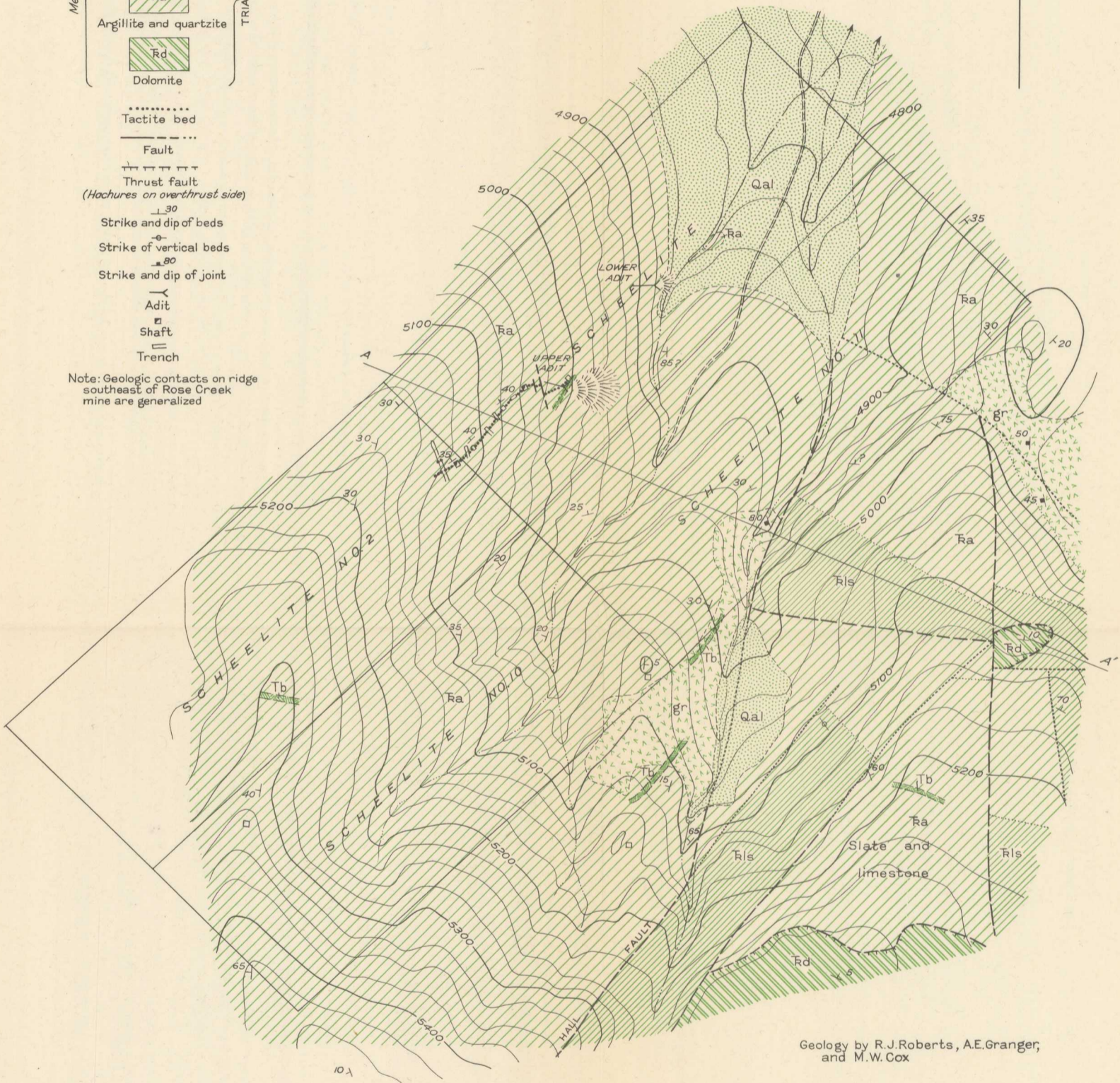


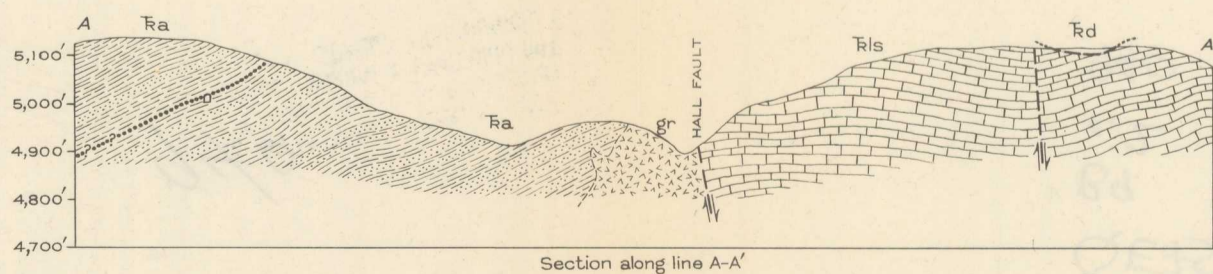
HUMBOLDT	CO	T.35N.	Sec.31	32
PERSHING	CO	T.34N.	Sec.6	5



- EXPLANATION**
- Cenozoic*
- Qal Alluvium
 - Tb Basic dike
- Mesozoic*
- gr Granite
 - Rls Limestone
 - Ra Argillite and quartzite
 - Rd Dolomite
- Tactite bed
- Fault
- Thrust fault
(Hachures on overthrust side)
- Strike and dip of beds
- Strike of vertical beds
- Strike and dip of joint
- Adit
- Shaft
- Trench
- Note: Geologic contacts on ridge southeast of Rose Creek mine are generalized



Geology by R.J.Roberts, A.E.Granger,
and M.W.Cox



Section along line A-A'

GEOLOGIC MAP AND SECTION OF THE ROSE CREEK MINE AND VICINITY, PERSHING COUNTY, NEVADA

250 0 1,000 Feet
Contour interval 25 feet, datum is mean sea level