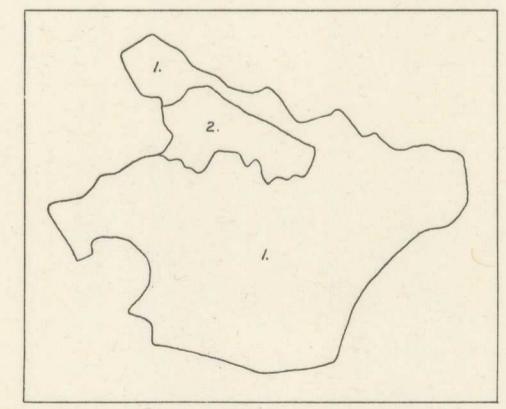


299
288
285
282

Vertical level of contour
is 100 feet. 2 3/4' and 100
feet. 100 feet. 100 feet.

T. 22
N.

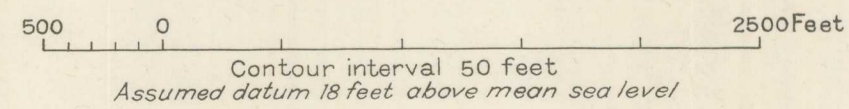
T. 22
N.



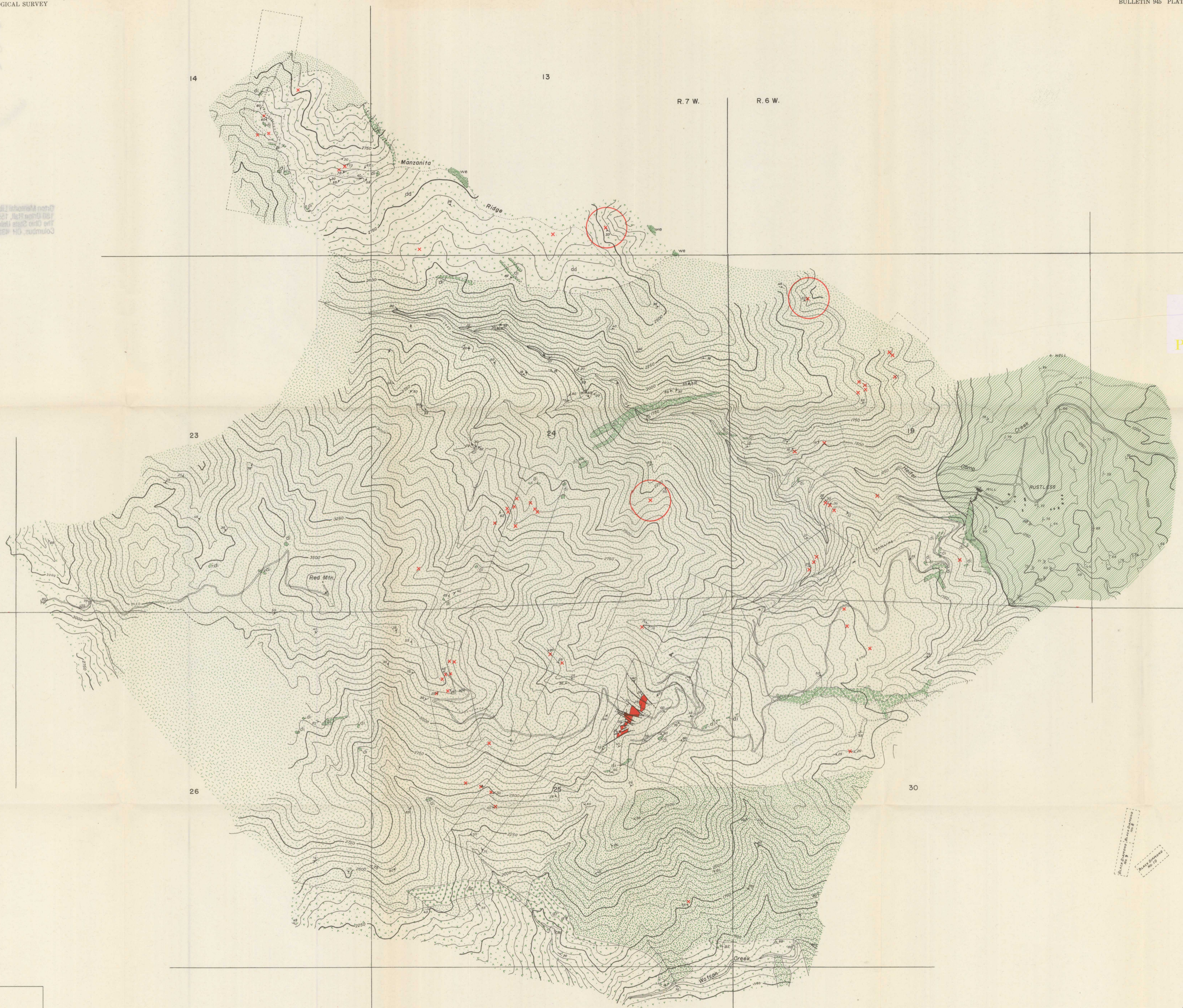
1. Contours plotted by stadia methods
2. Contours plotted from aneroid traverses
on aerial photographs

Topography by G.A. Rynearson, H.E. Hawkes Jr., C.R. Warren,
R.T. Littleton, R.C. Pruess, and F.W. Cater

Geology by G.A. Rynearson, H.E. Hawkes Jr., D.P. Wheeler Jr.,
and R.T. Littleton, 1940-42

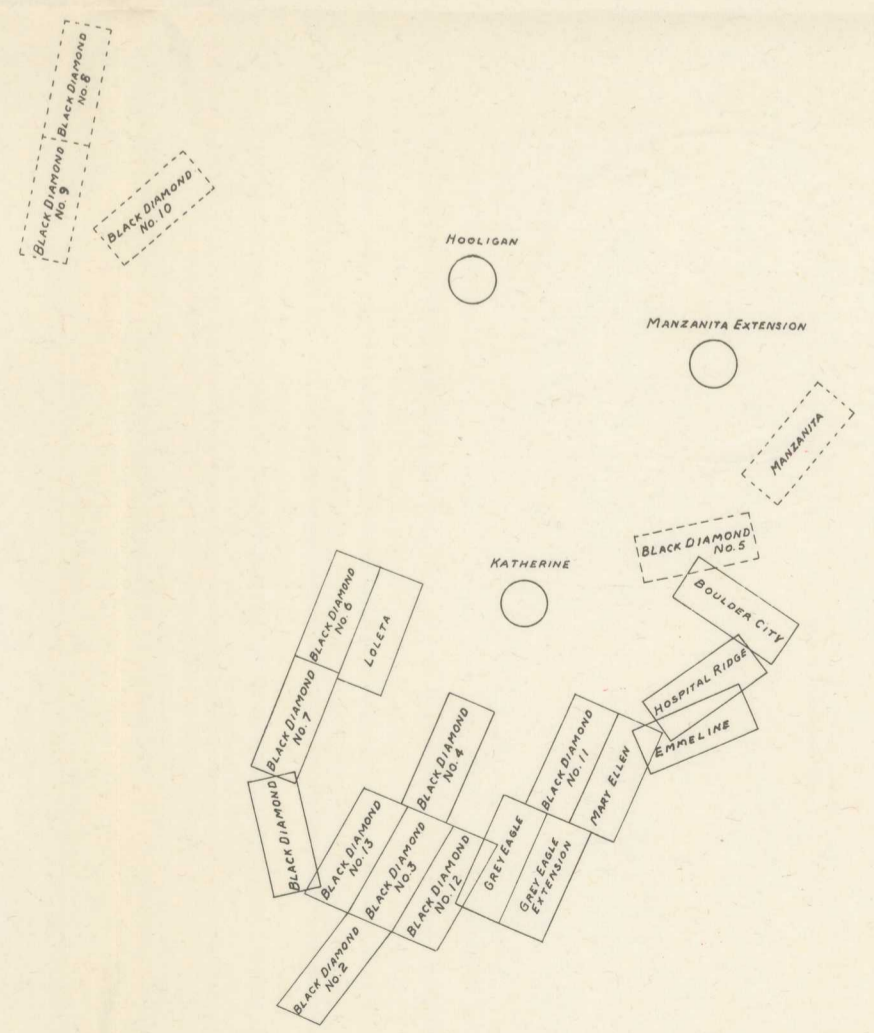


GEOLOGIC MAP OF PART OF GLENN COUNTY, CALIFORNIA



- EXPLANATION**
- Chromite ore (Cut-off about 5 percent Cr_2O_3)
 - Saxinite, enclosing very few dunite bodies
 - Peridotite, including saxinite, many dunite bodies and small diorite dikes
 - Dunite including small diorite dikes
 - Wehrlite
 - Diorite
 - 2 MIL. Knoxvillite formation (shale, sandstone, and conglomerate)
 - Argillite and volcanic rocks
 - Franciscan (?) formation (Phyllites and schist)
 - Fault
 - Strike and dip of beds
 - Strike and dip of overturned beds
 - Strike and dip of foliation
 - Strike and dip of sheeting
 - Strike of vertical sheeting
 - Strike and dip of joints
 - Strike of vertical joints
 - Open pit in chromite ore
 - Area showing noteworthy concentrations of chromite

PASS A



INDEX TO CLAIMS