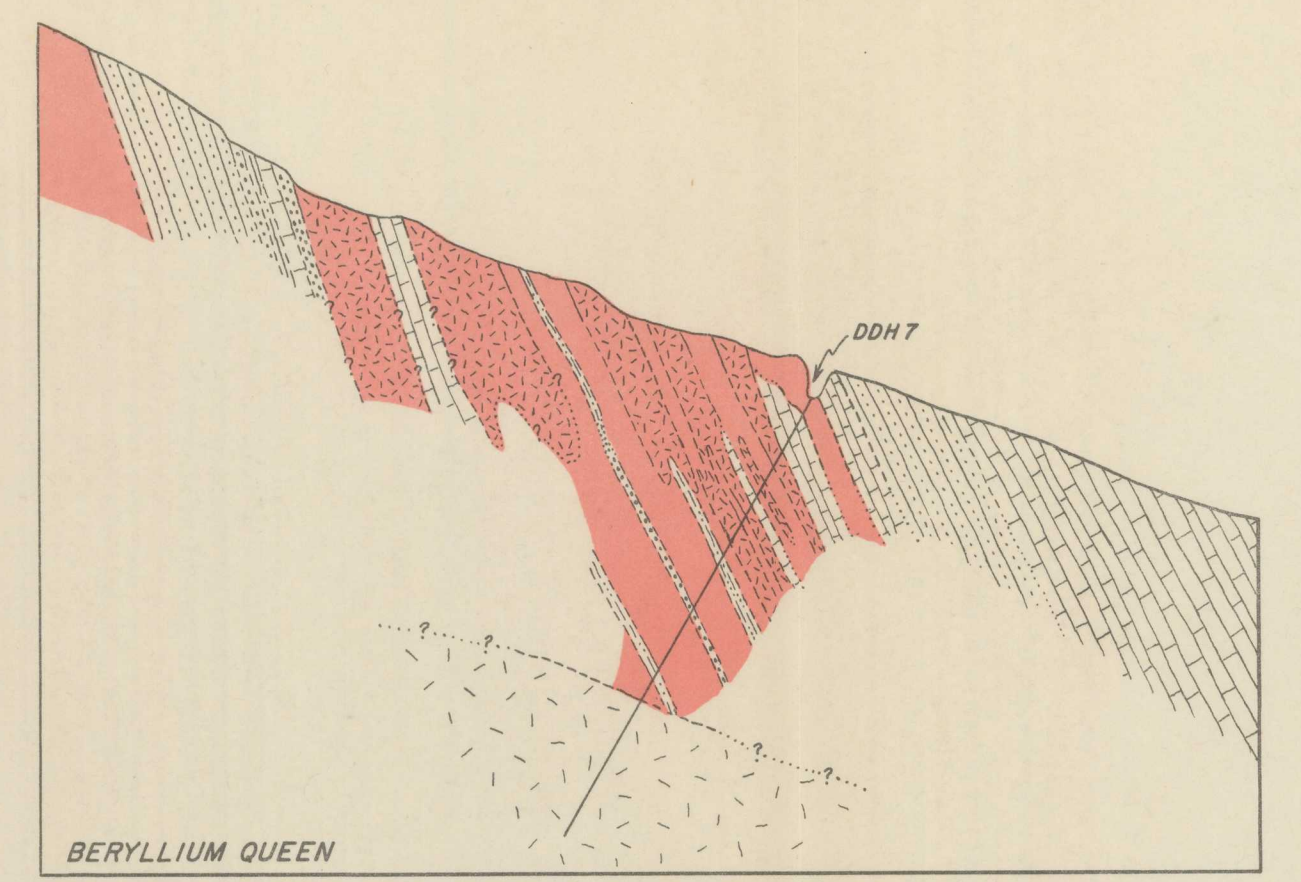


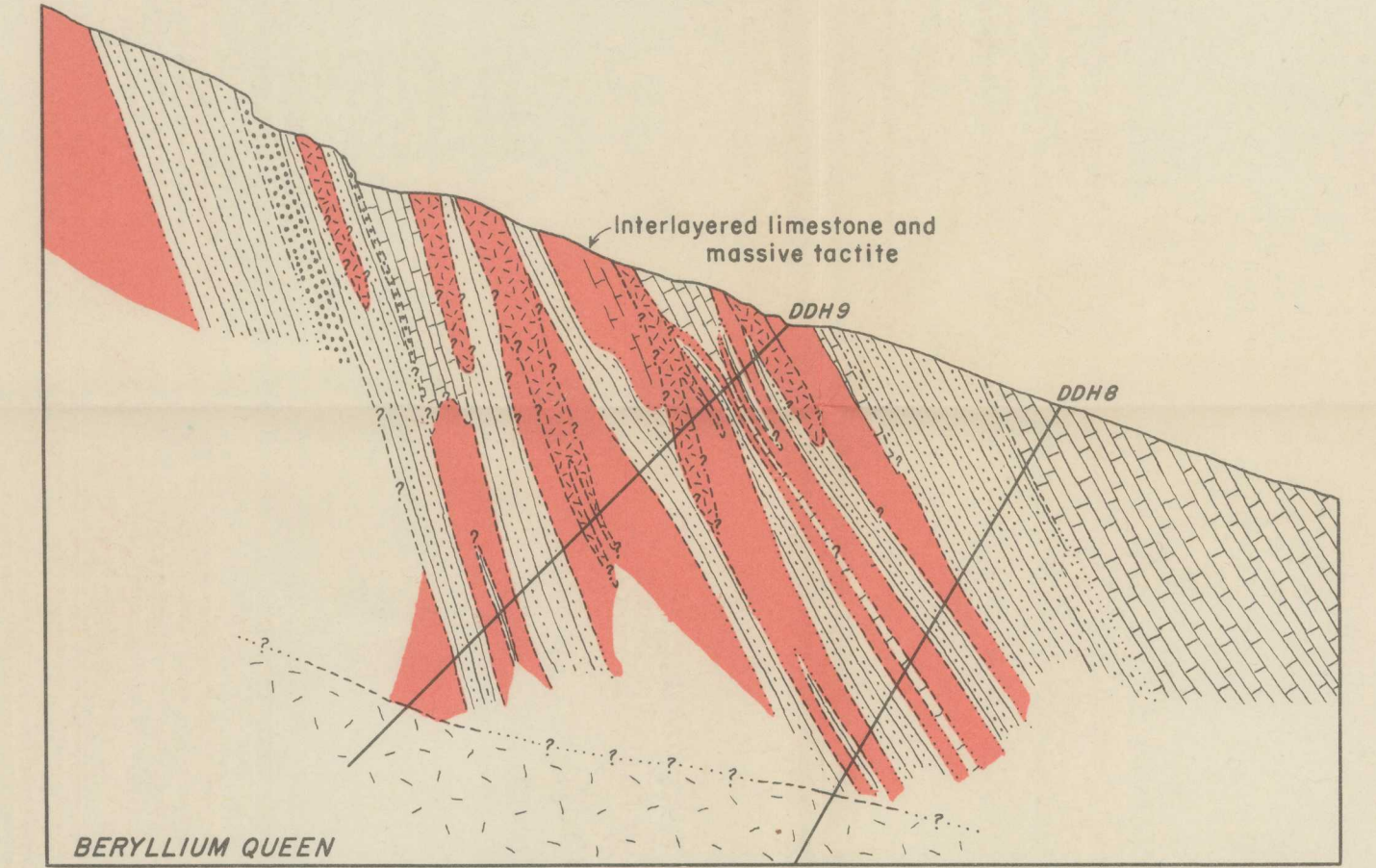
EXPLANATION

- Fanglomerate, breccia, and sandstone, poorly lithified
- Fine-grained granite
- Limestone, recrystallized and locally silicified
- Vitreous feldspathic quartzite
- Pyroxene-rich granulite
- "Ribbon rock" tactite and fluorite-rich massive tactite (contain beryllium)
- Massive tactite
- Fault showing upthrown and downthrown sides, dotted where concealed
- Strike and dip of beds
- Old pits and trenches
- Exploratory workings of the U.S. Bureau of Mines
- Diamond-drill hole
- Trench
- Test pit or shaft

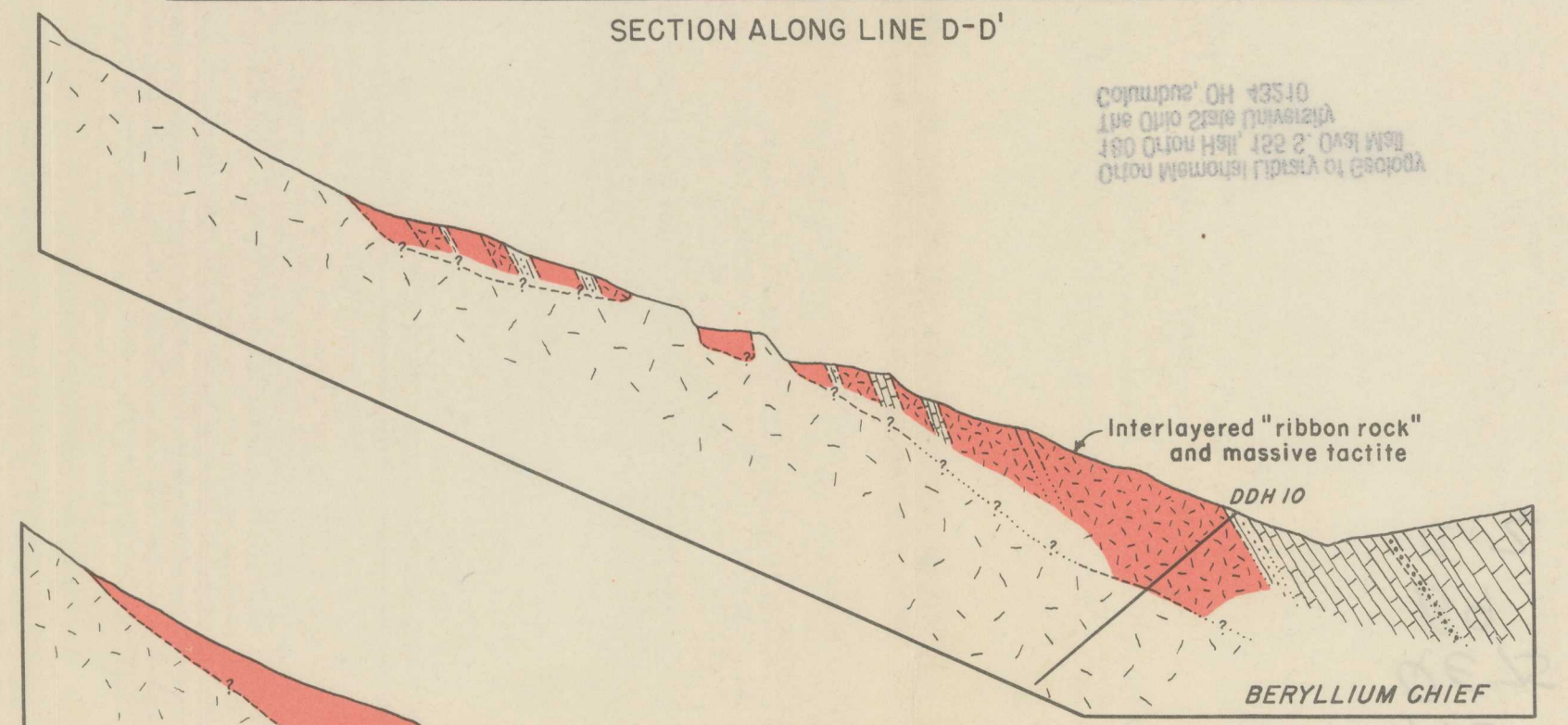
Topography by R. H. Jahns and W. P. Irwin
July 1942-April 1943
Contour interval 20 feet
Datum is mean sea level



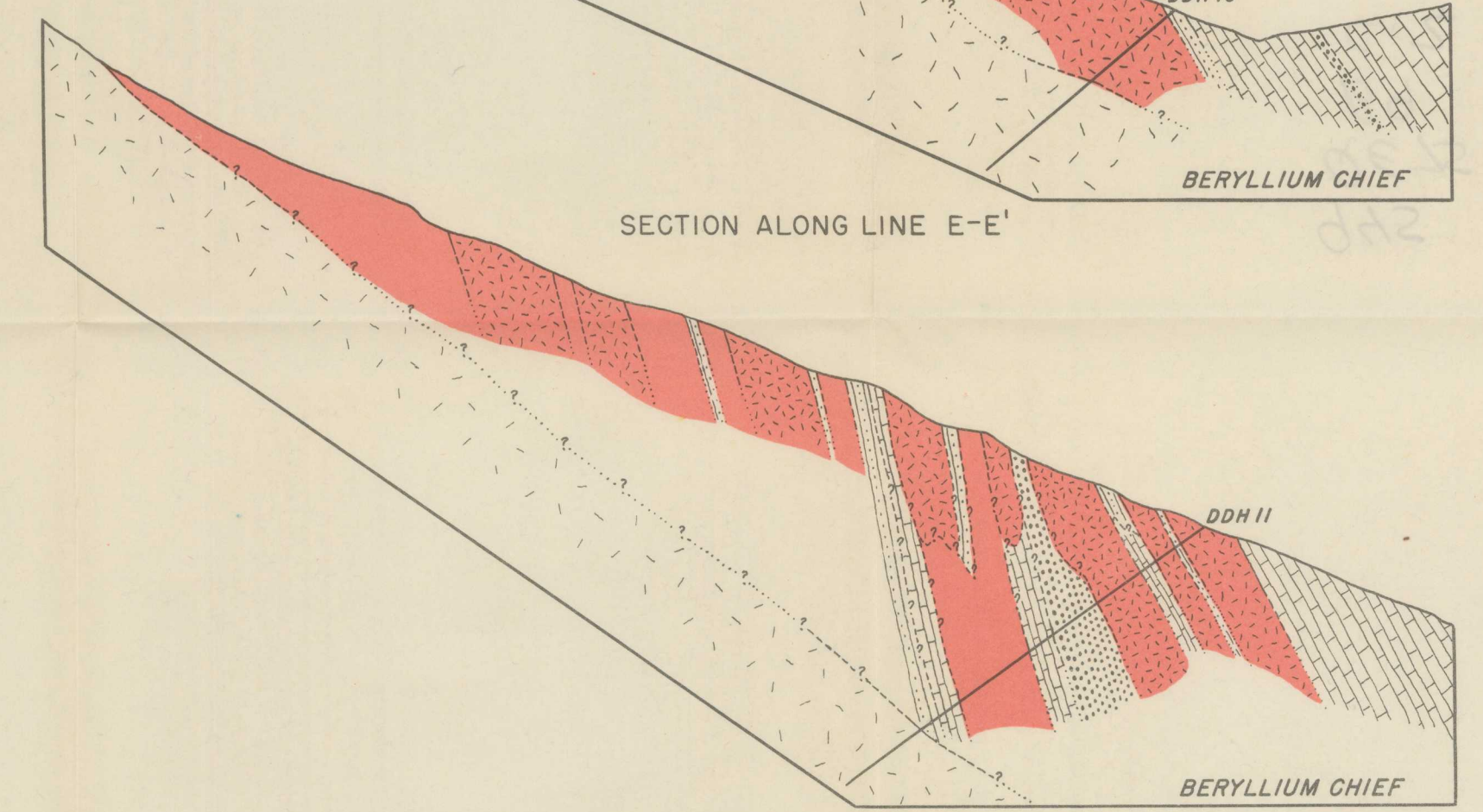
SECTION ALONG LINE C-C'



SECTION ALONG LINE D-D'

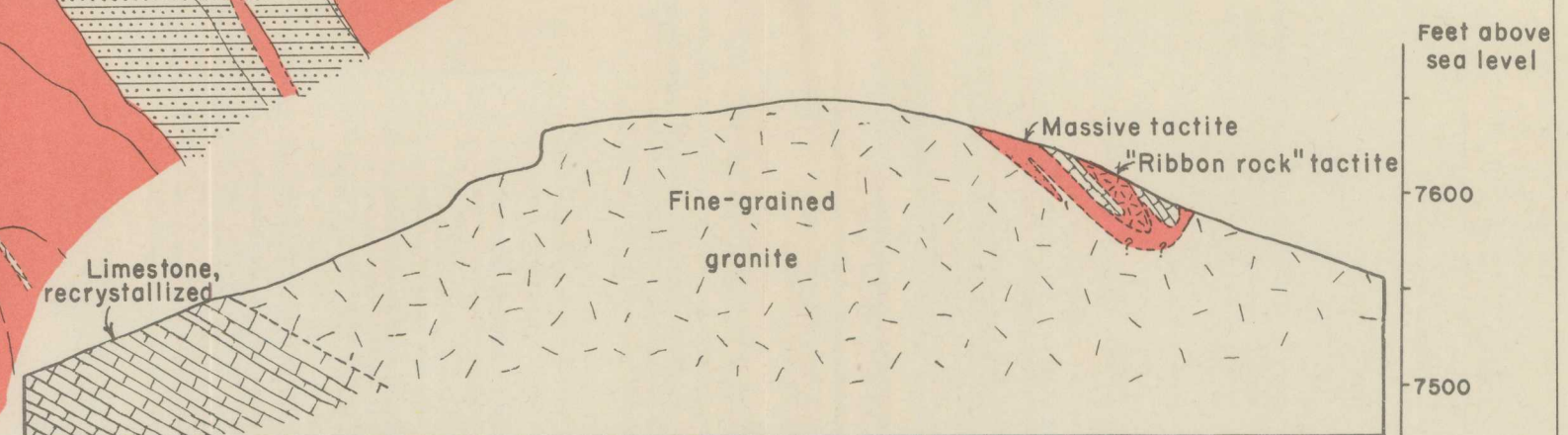
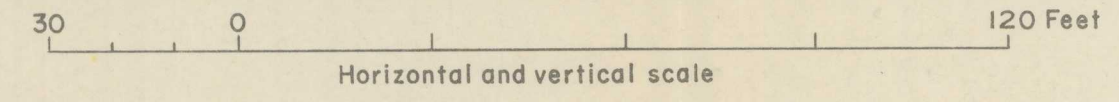


SECTION ALONG LINE E-E'

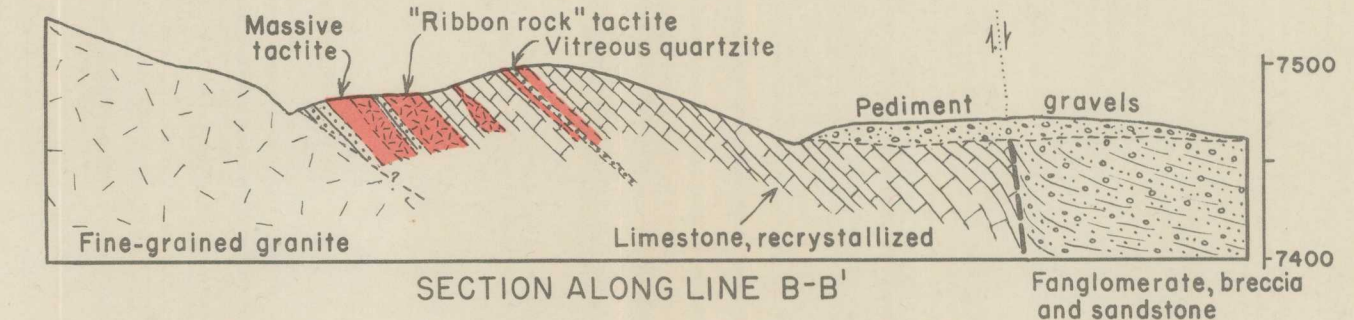


SECTION ALONG LINE F-F'

DETAILED SECTIONS OF DEPOSITS ON EAST SLOPE, NORTH END AREA



SECTION ALONG LINE A-A'



SECTION ALONG LINE B-B'