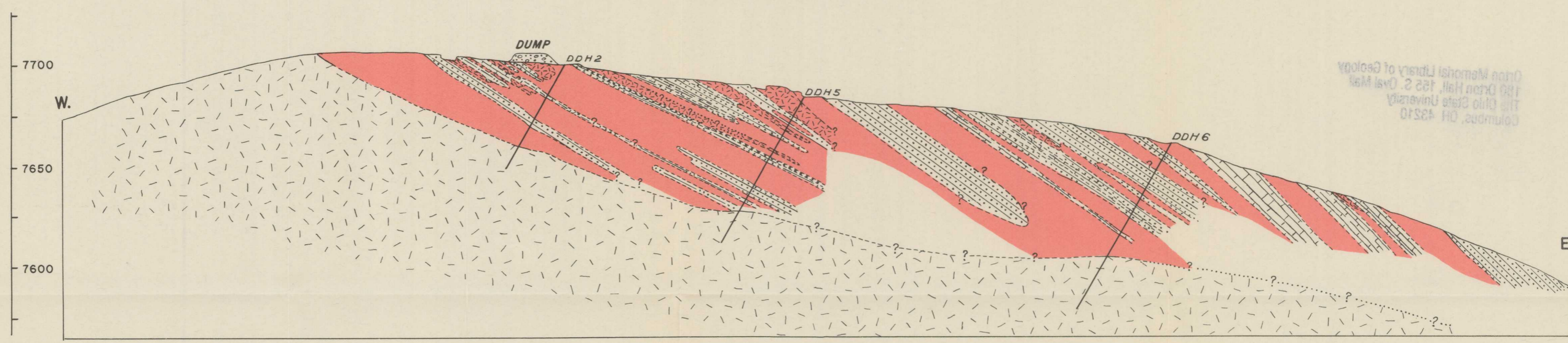


SECTION ALONG LINE A-A'



SECTION ALONG LINE B-B'

- EXPLANATION**
- Fine-grained granite
 - Limestone, recrystallized and locally silicated, in thick beds
 - Vitreous feldspathic quartzite, locally mineralized
 - Pyroxene-rich granulite
 - "Ribbon rock" tactite (contains beryllium)
 - Massive tactite, with local fluorite-rich beryllium-bearing zones
 - Fault, dashed where approximate (arrows show direction of movement)
 - Older exploratory workings (shallow pits and trenches)

- EXPLORATORY WORKINGS OF THE U. S. BUREAU OF MINES**
- Trench
 - T.P. 3 Test pit
 - DDH 6 Diamond-drill hole

Geology by L. A. Wright and R. H. Jahns
July 1942-April 1943

GEOLOGIC MAP AND SECTIONS OF THE BERYLLIUM REEF AND STAR BODIES, NORTH END AREA, IRON MOUNTAIN, SOCORRO COUNTY, NEW MEXICO

