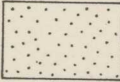



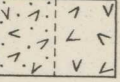

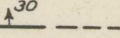
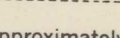
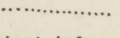
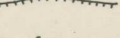
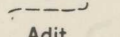
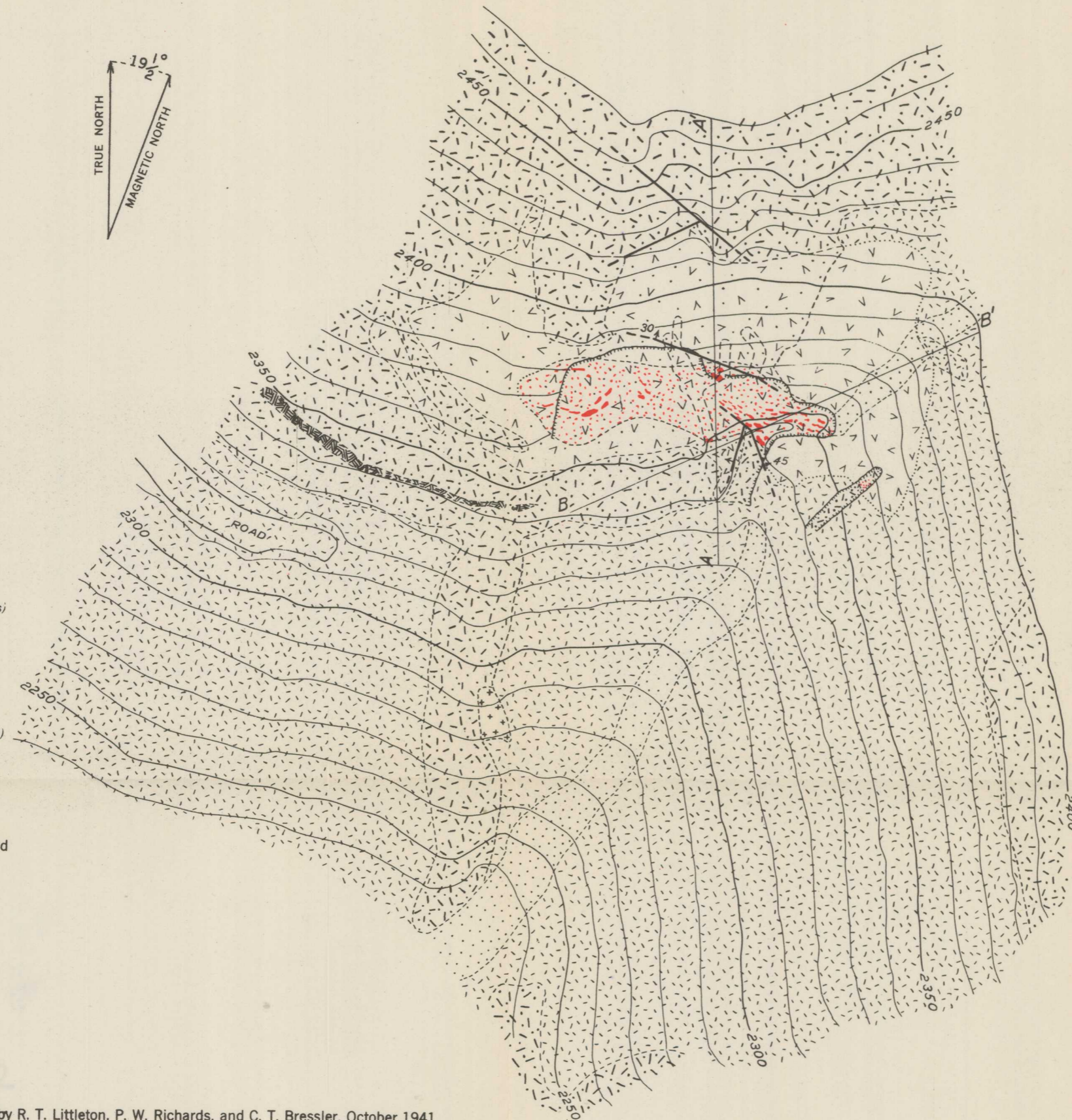
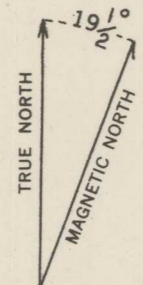
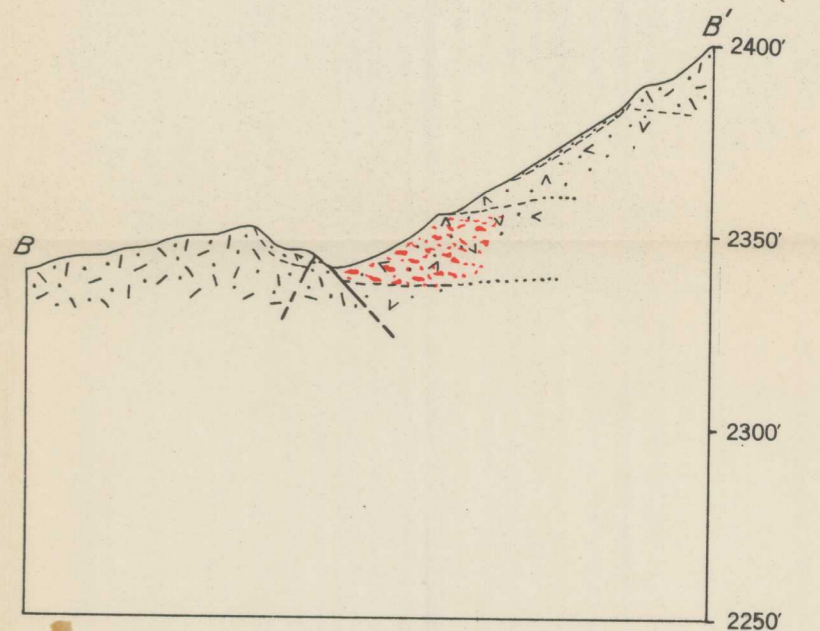
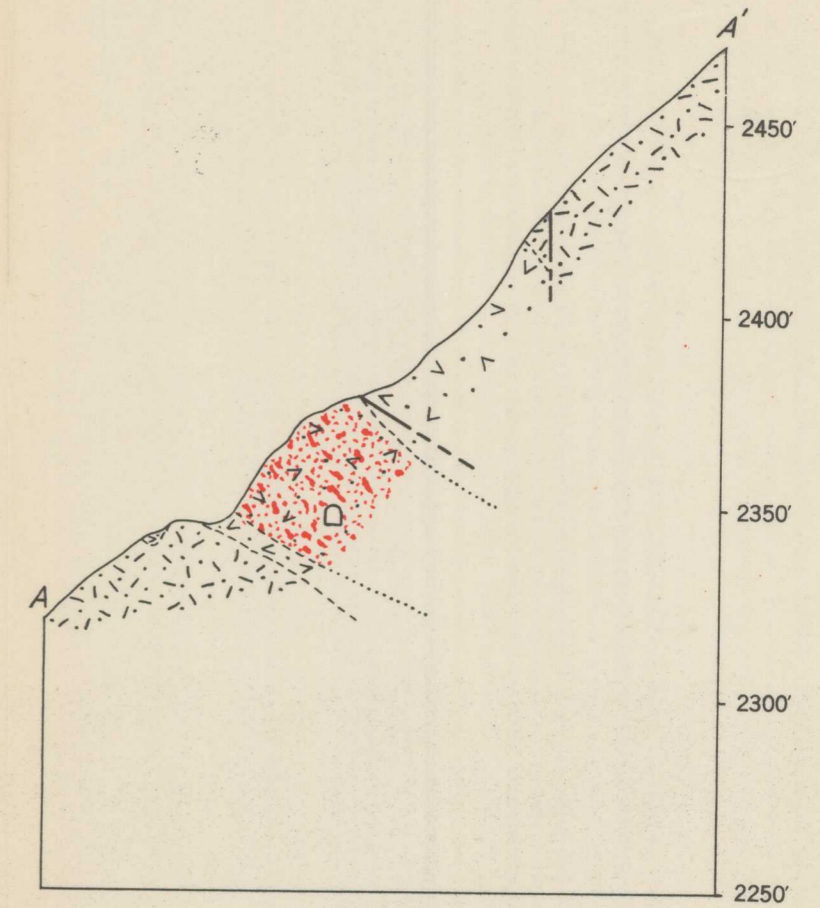


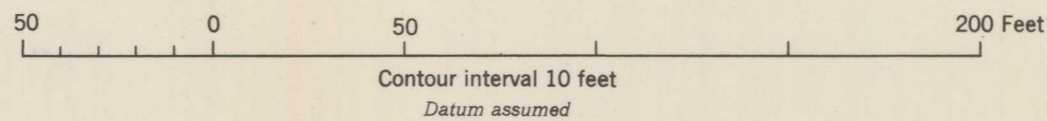
- EXPLANATION
-  Stream wash
 -  Rodingite
 -  Diorite
 -  Chromite ore
 -  Serpentinized dunite
(Outcrop shown by added dots)
 -  Serpentinized saxonite
(Outcrop shown by added dots)
 -  Fault
 -  Contact, approximately located
 -  Contact, inferred
 -  Edge of open cut
 -  Adit



Topography by R. T. Littleton, P. W. Richards, and C. T. Bressler, October 1941



Geology by G. A. Rynearson and R. T. Littleton, October 1941



GEOLOGIC MAP AND SECTIONS OF THE GRAU MINE, TEHAMA COUNTY, CALIFORNIA

Columbus, OH 43210
 The Ohio State University
 180 Ohio Hall, 182 2nd Oval Hall
 180 Ohio Hall, 182 2nd Oval Hall
 Ohio Memorial Library of 890100