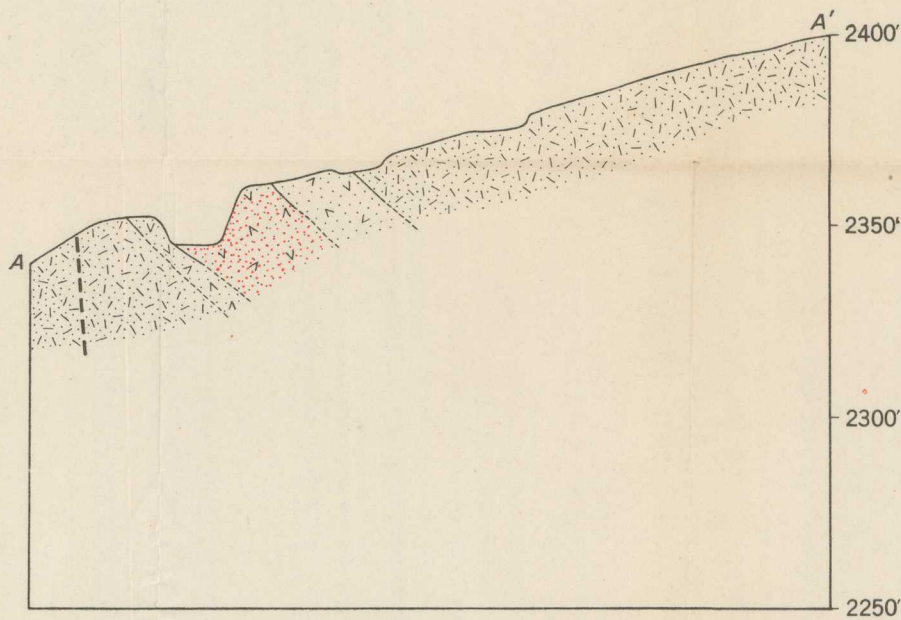


Topography by R. T. Littleton and P. W. Richards, October 1941


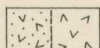
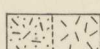

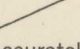
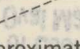
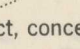
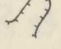
Geology by G. A. Rynearson and R. T. Littleton, October 1941



50 0 100 Feet

Contour interval 10 feet  
Datum assumed

EXPLANATION

-  Chromite deposit
-  Serpentinized dunite  
(Outcrop shown by added dots)
-  Serpentinized saxonite  
(Outcrop shown by added dots)
-  Fault
-  Contact, accurately located
-  Contact, approximately located
-  Contact, concealed
-  Trench or open pit

GEOLOGIC MAP AND SECTION OF THE WEST PIT OF THE GRAU MINE,  
TEHAMA COUNTY, CALIFORNIA