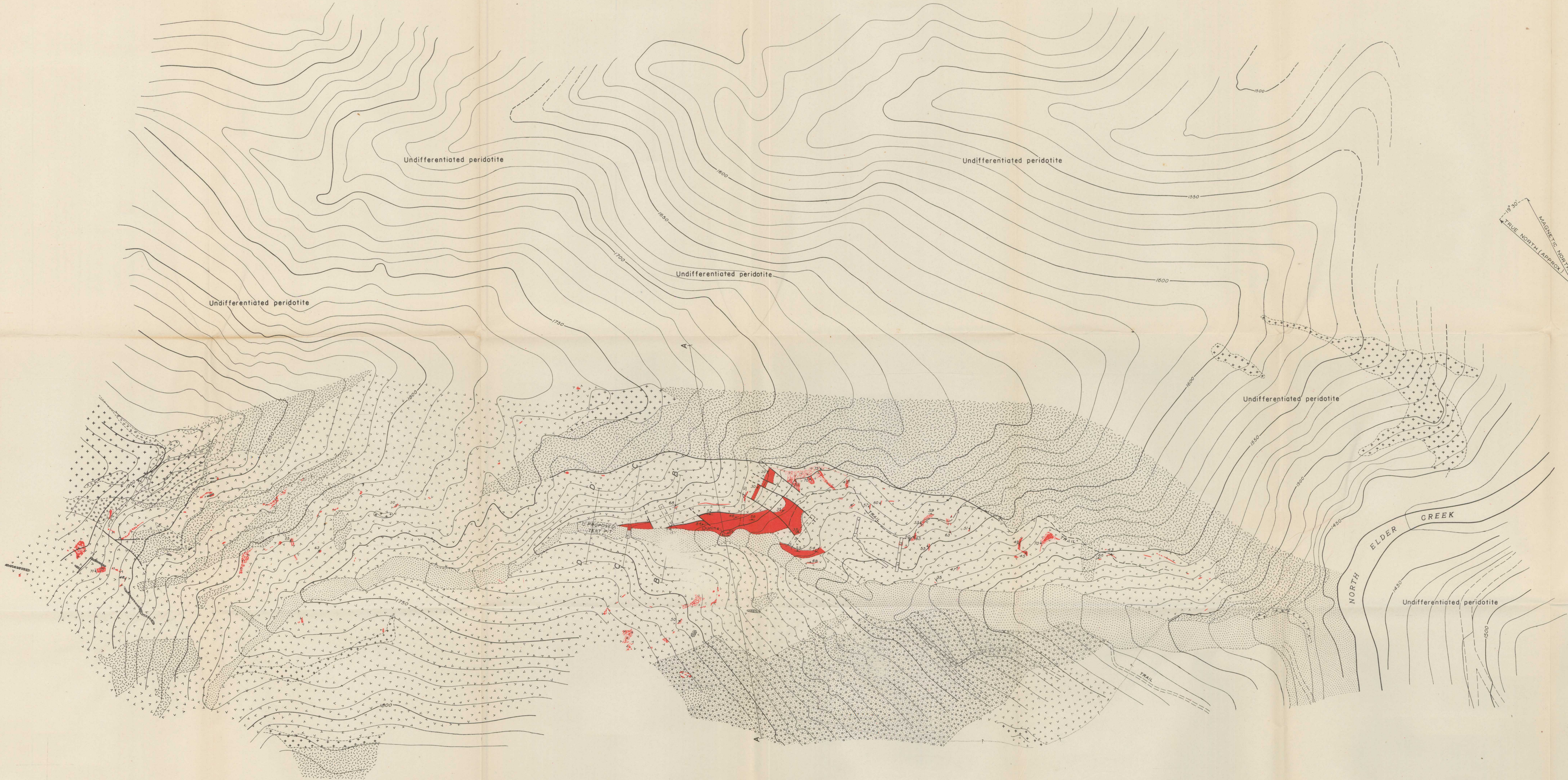


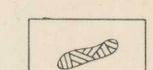
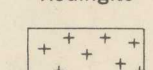
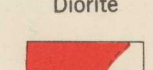
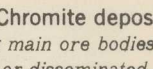
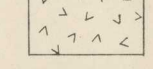
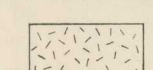
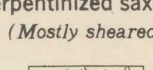
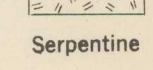
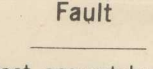
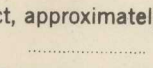
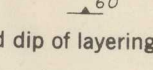
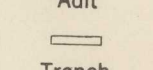

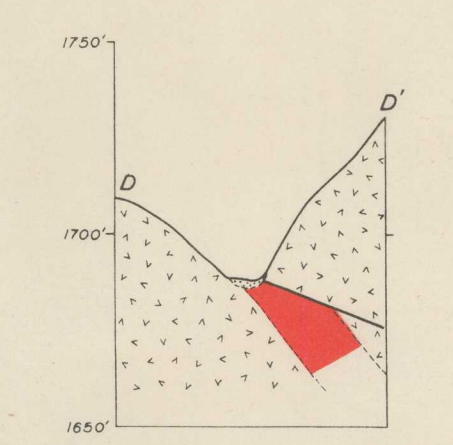
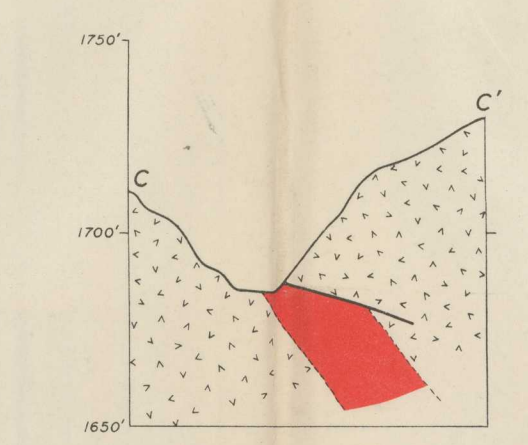
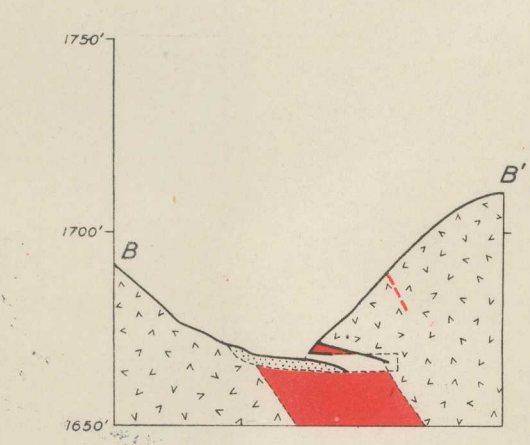
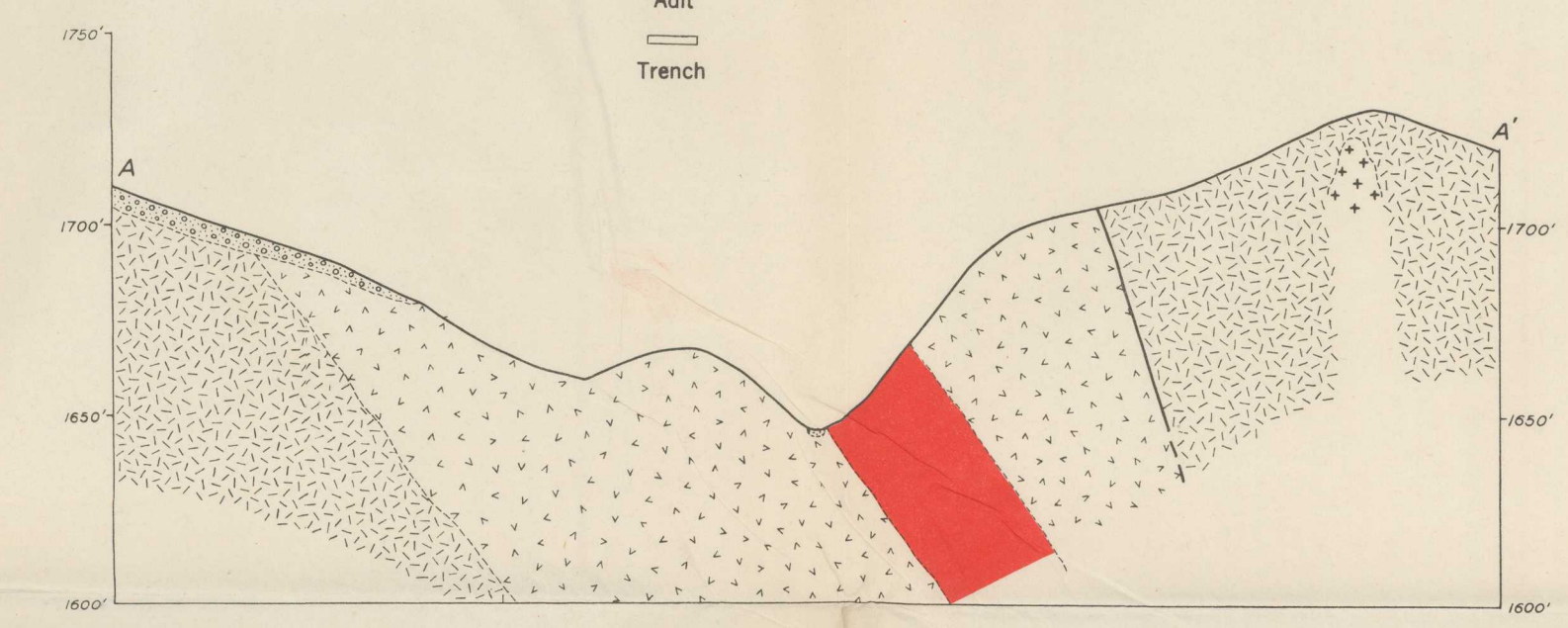


945
QE75
B9
C.2

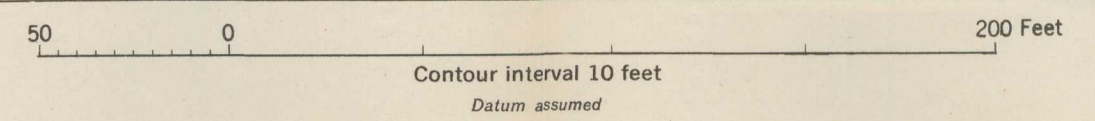


EXPLANATION

-  Stream wash
-  Talus
-  Rodingite
-  Diorite
-  Chromite deposits
(Showing main ore bodies and minor layered or disseminated deposits)
-  Serpentinized dunite
(Mostly sheared)
-  Serpentinized saxonite
(Mostly sheared)
-  Serpentine
-  Fault
-  Contact, accurately located
-  Contact, approximately located
-  Contact, concealed
-  Strike and dip of layering in chromite
-  Adit
-  Trench



Topography by G. A. Rynearson, R. T. Littleton, P. W. Richards,
and C. T. Bressler, September 1941



Geology by G. A. Rynearson and R. T. Littleton, October 1941

GEOLOGIC MAP AND SECTIONS OF THE MILL GULCH AREA, TEHAMA COUNTY, CALIFORNIA

Orton Memorial Library of Geology
180 Orton Hall, 155 S. Oval Mall
The Ohio State University
Columbus, OH 43210