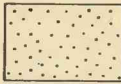



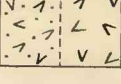
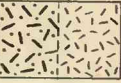
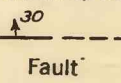
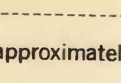
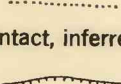
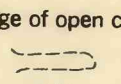

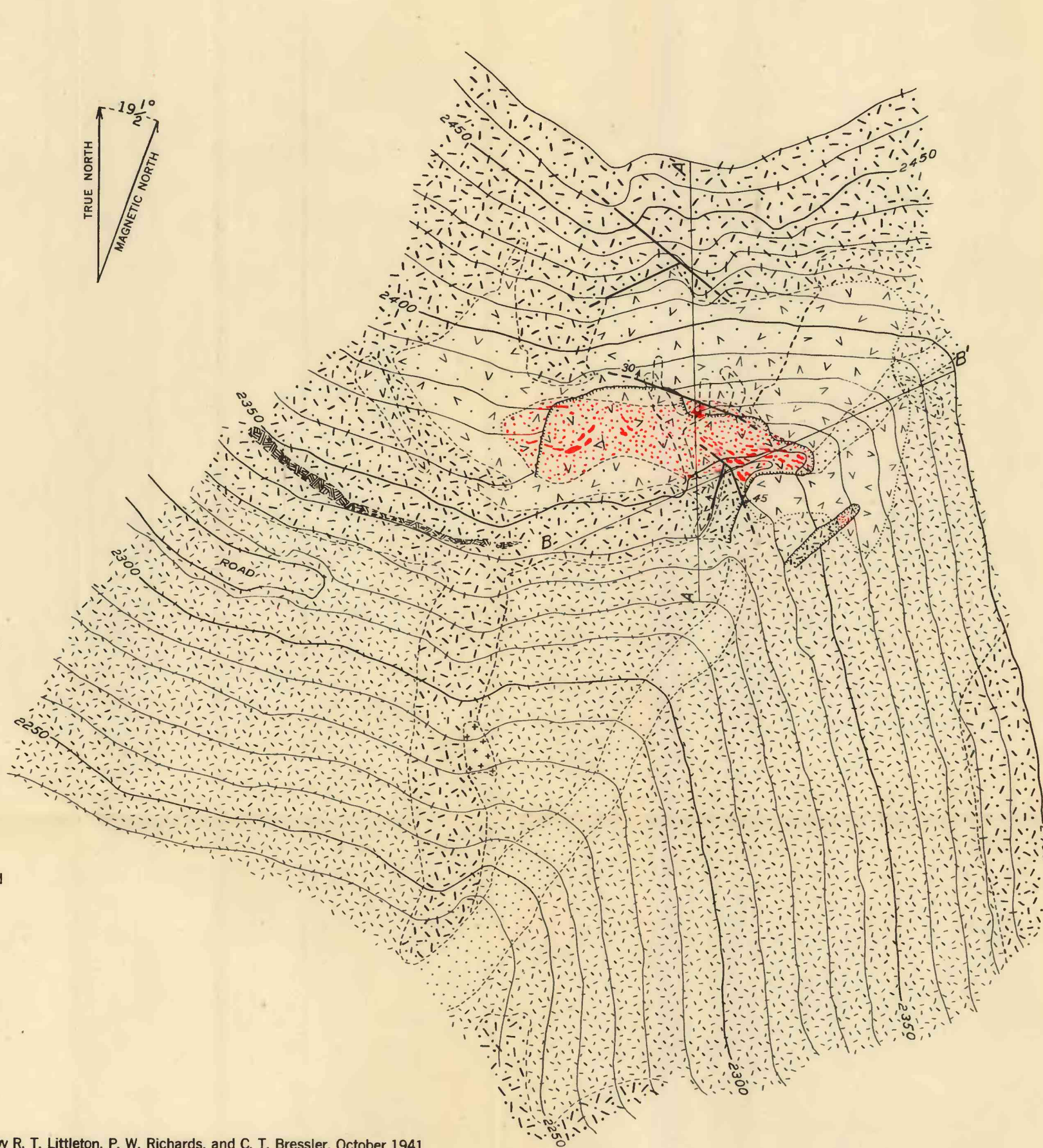
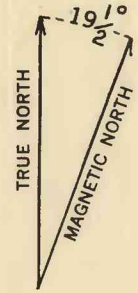
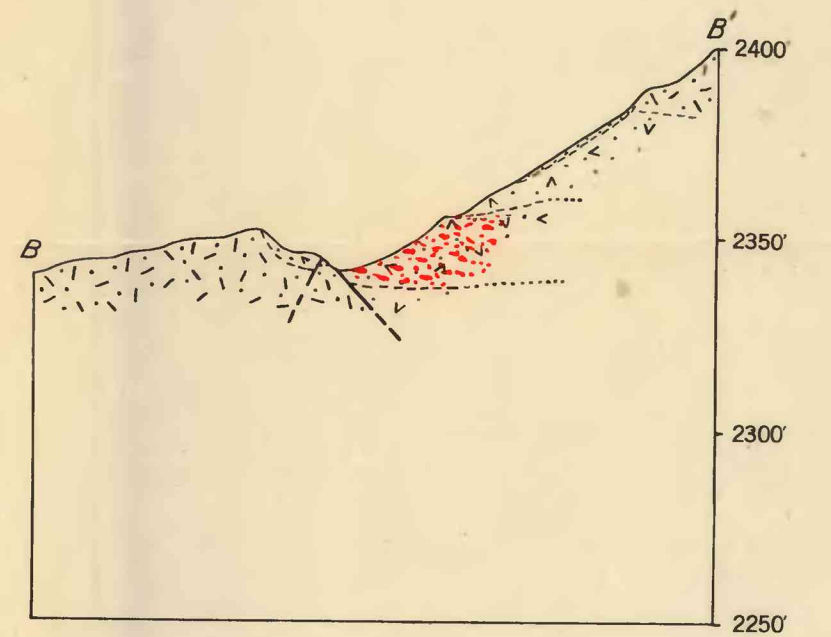
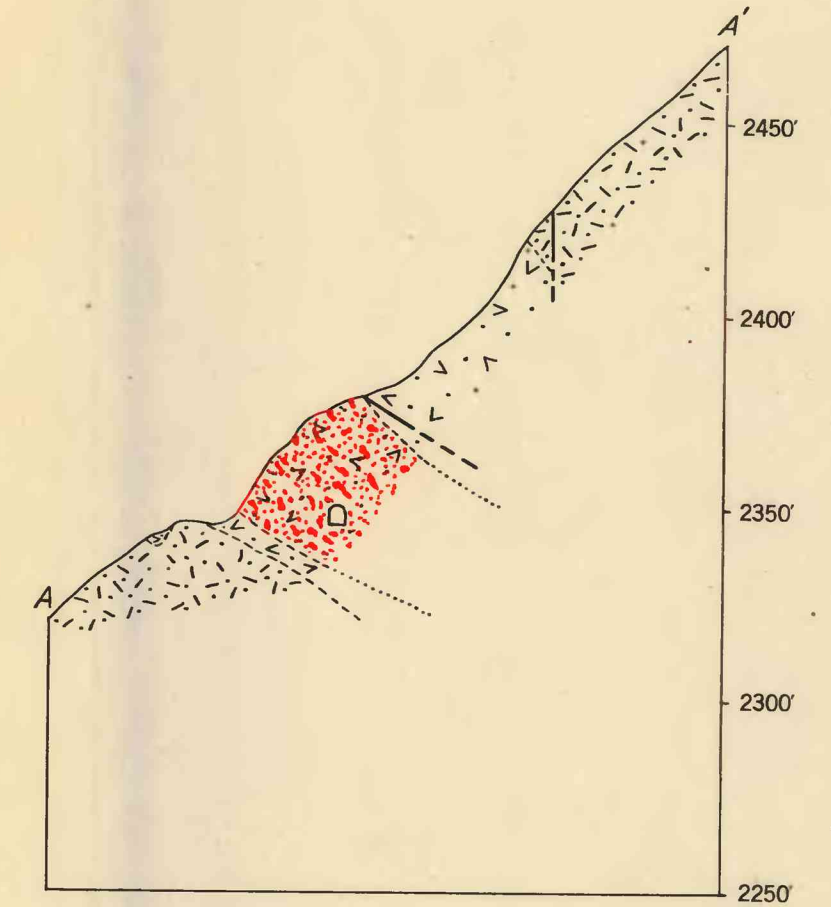


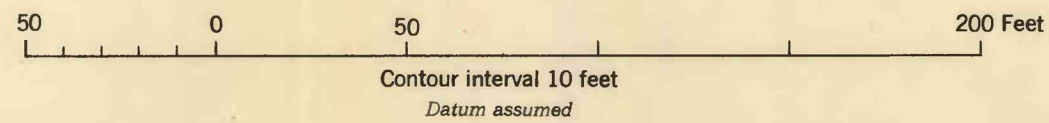
- EXPLANATION
-  Stream wash
  -  Rodingite
  -  Diorite
  -  Chromite ore
  -  Serpentinized dunite  
(Outcrop shown by added dots)
  -  Serpentinized saxonite  
(Outcrop shown by added dots)
  -  Fault
  -  Contact, approximately located
  -  Contact, inferred
  -  Edge of open cut
  -  Adit



Topography by R. T. Littleton, P. W. Richards, and C. T. Bressler, October 1941



Geology by G. A. Ryneanson and R. T. Littleton, October 1941



GEOLOGIC MAP AND SECTIONS OF THE GRAU MINE, TEHAMA COUNTY, CALIFORNIA