


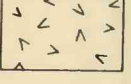
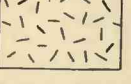






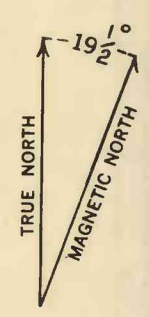
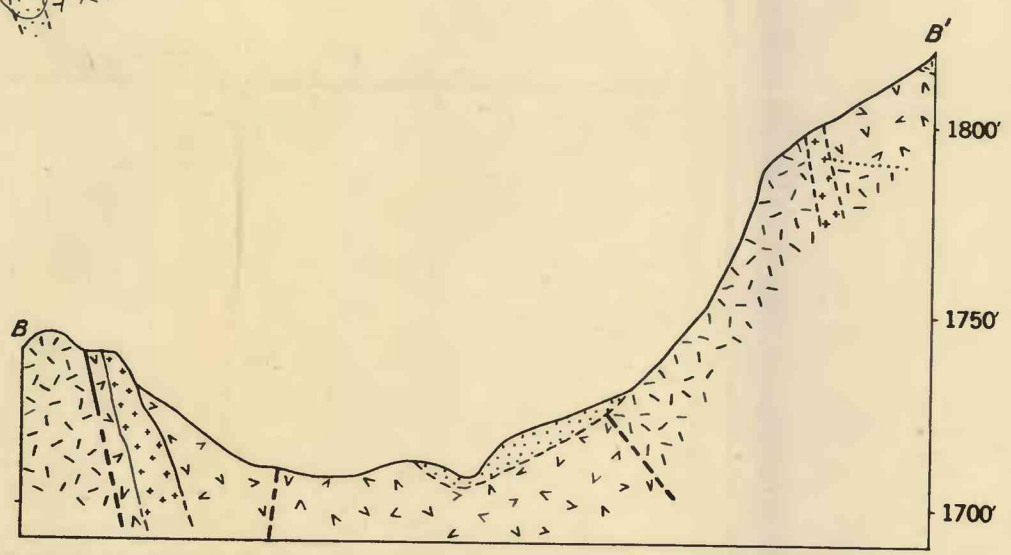
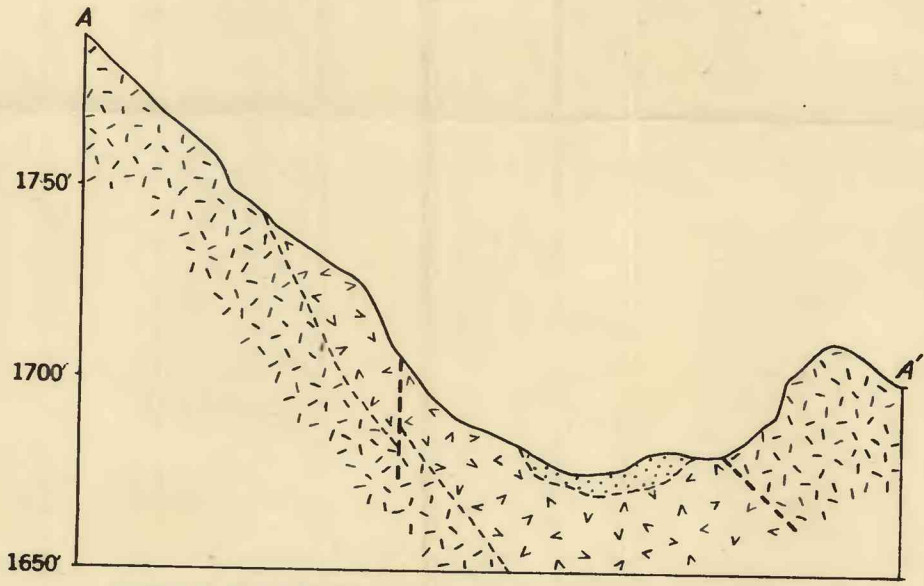


- EXPLANATION**
-  Stream wash and dumps
 -  Diorite
 -  Chromite ore
 -  Serpentinized dunite
 -  Serpentinized saxonite
 -  Fault
 -  Contact, accurately located
 -  Contact, approximately located
 -  Contact, concealed
 -  Strike and dip of chromite layers
 -  Shaft



Topography by G. A. Ryneerson, R. T. Littleton, P. W. Richards,
and C. T. Bressler, September 1941

Geology by G. A. Ryneerson and R. T. Littleton, October 1941



**GEOLOGIC MAP AND SECTIONS OF THE LOWER WORKINGS OF THE NOBLE ELECTRIC STEEL CO.,
TEHAMA COUNTY, CALIF.**

