

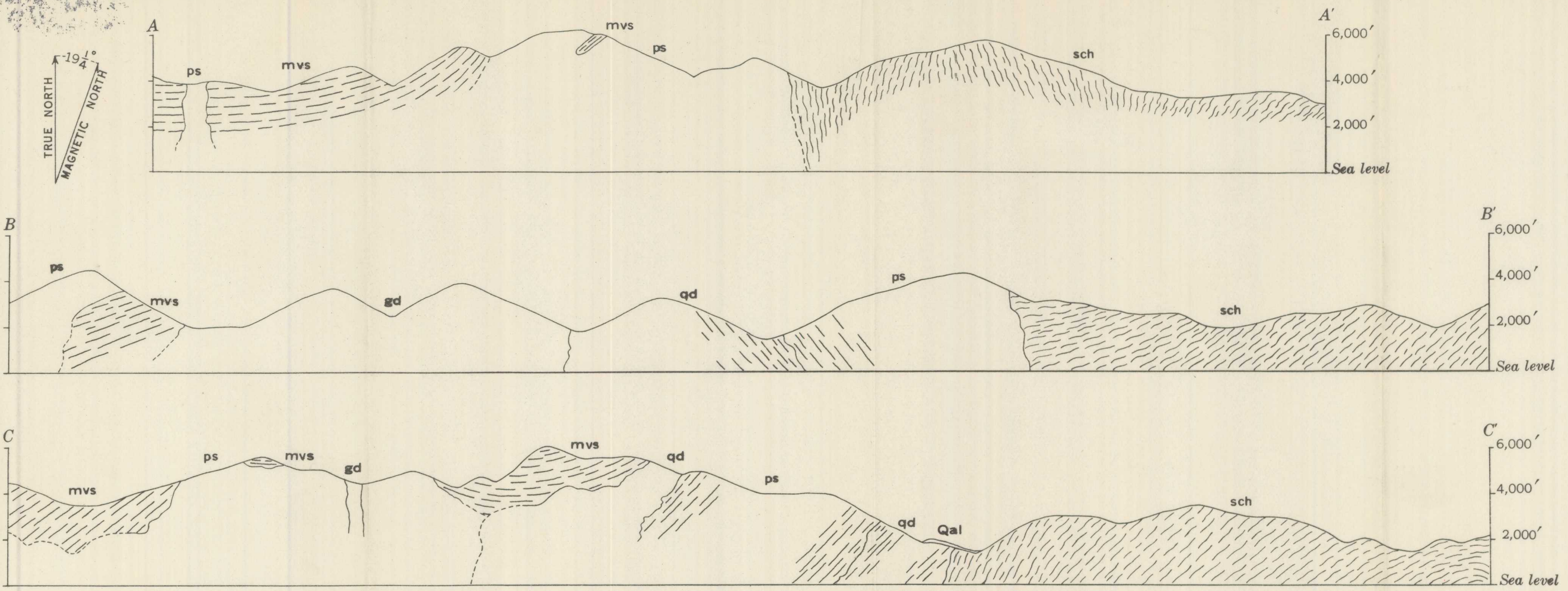
- EXPLANATION**
- Alluvium and gravel terraces (Gravel, sand, silt, and slightly water-worn colluvium)
 - Granodiorite (Light-colored medium-grained rock with plagioclase, quartz, orthoclase, and biotite)
 - Ultramafic rocks (Peridotite and serpentine)
 - Quartz diorite (Gray medium-grained rock with plagioclase, quartz, hornblende and biotite)
 - Younger metamorphic rocks and quartz diorite (Undifferentiated)
 - Younger metamorphic rocks (Undifferentiated metapelites, shale, quartzite, and marble)
 - Older metamorphic rocks (Mica, chlorite, and hornblende schist)
- CONTACTS**
- Known contact
 - Approximate contact
 - Concealed contact
 - Slide contact
 - Strike and dip of beds
 - Strike and dip of schistosity, foliation, and banding or doubtful bedding
 - Strike of vertical schistosity or foliation
 - Chromite mines and prospects
 - Graphite prospects
 - Trail
- CHROMITE MINES AND PROSPECTS**
1. Anniversary (Kangaroo Mountain)
 2. Emma Bell
 3. Seiad Creek
 4. Unnamed claim
 5. Barton claim
 6. Ladd (Dolbear)
 7. Fairview claims (Hamburg Bar mine)
 8. Grand Falls claim
 9. Grand Canyon (Neptune) claim
 10. Bluestone
 11. Cerro Colorado (Liberty) claim
 12. Veta Chica (Jumbo) claim
 13. Veta Grande (Red Butte) claim
 14. Mary Lou (Octopus) claim
 15. Lady Gray claim
 16. Black Spot No. 1
 17. Black Spot No. 2
 18. Unnamed claim
- GRAPHITE PROSPECTS**
1. Black Jack
 2. Unnamed prospect
 3. Unnamed prospect
 4. Unnamed prospect

Base from U. S. Geological Survey topographic map 1913-1914

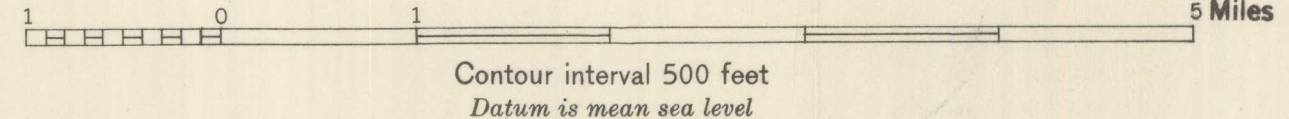
Geology by G. A. Rynearson and C. T. Smith

Orton Memorial Library of Geology
180 Orton Hall, 155 S. Oval Mall
The Ohio State University
Columbus, OH 43210

QE 75
B9
no. 948
c. 2



PRELIMINARY GEOLOGIC MAP AND SECTIONS OF THE NORTHEASTERN PART OF THE SEIAD QUADRANGLE, SISKIYOU COUNTY, CALIFORNIA



Contour interval 500 feet
Datum is mean sea level

DEPARTMENT OF GEOLOGY
OHIO STATE UNIVERSITY