

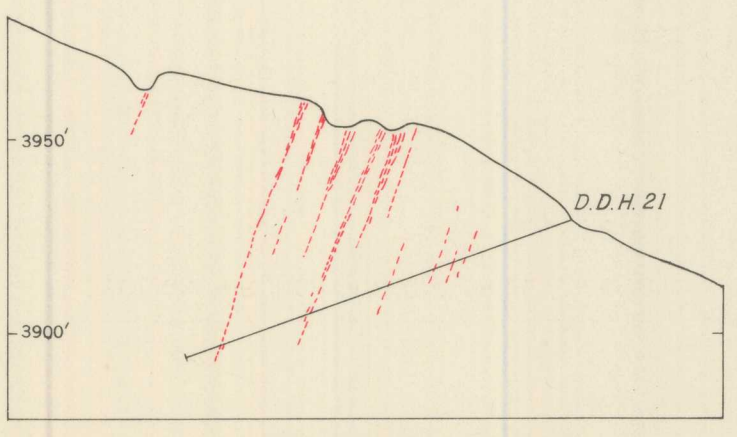
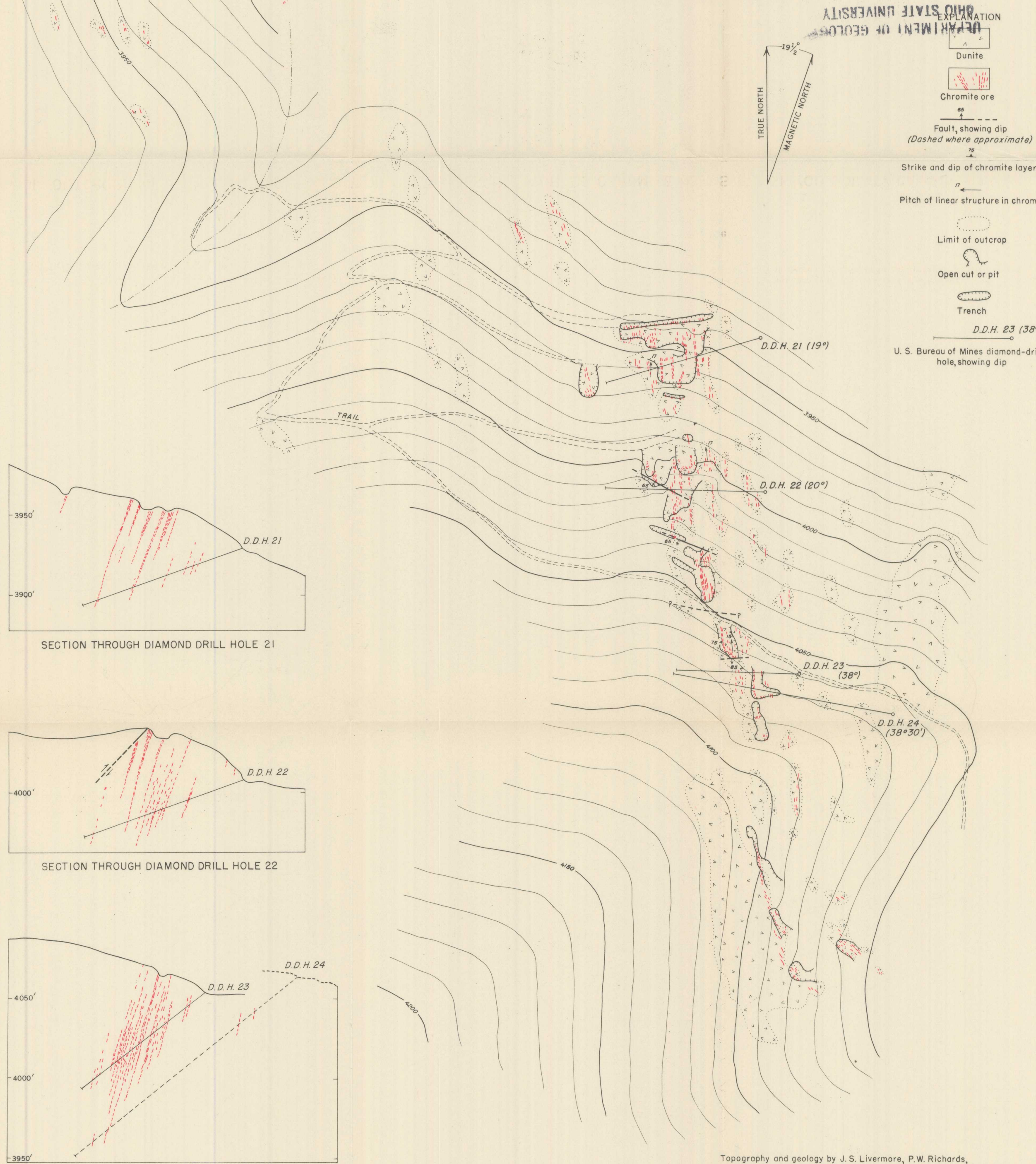
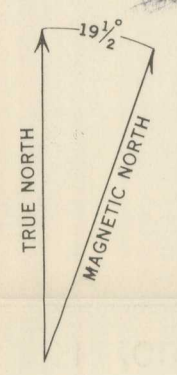
LONGITUDINAL PROJECTION OF MAIN PART OF ORE BODY

OHIO STATE UNIVERSITY
DEPARTMENT OF GEOLOGY

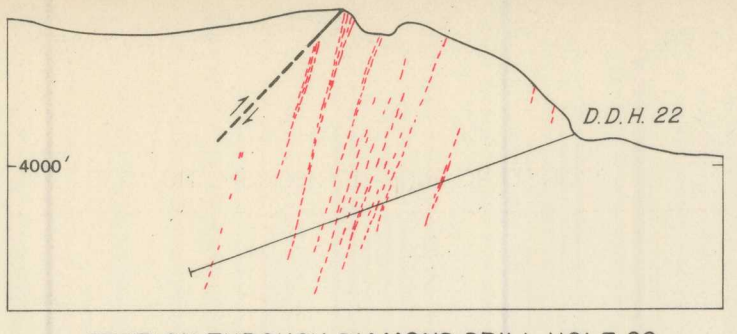
EXPLANATION

- Dunite
- Chromite ore
- Fault, showing dip
(Dashed where approximate)
- Strike and dip of chromite layers
- Pitch of linear structure in chromite
- Limit of outcrop
- Open cut or pit
- Trench
- D.D.H. 23 (38°)

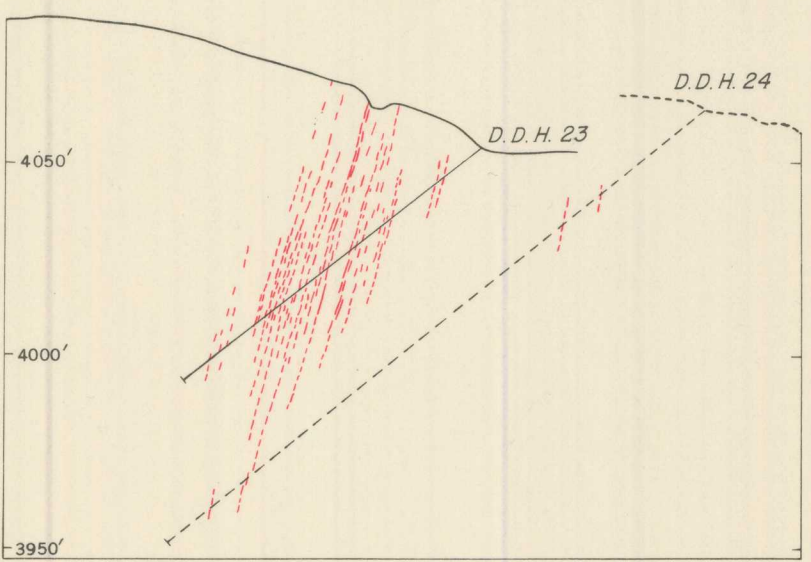
U. S. Bureau of Mines diamond-drill hole, showing dip



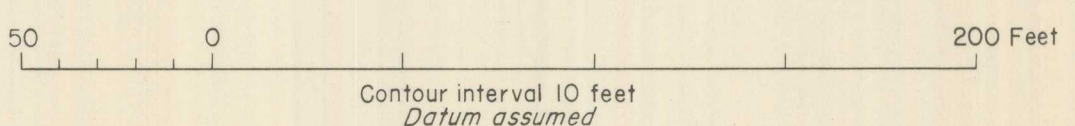
SECTION THROUGH DIAMOND DRILL HOLE 21



SECTION THROUGH DIAMOND DRILL HOLE 22



SECTION THROUGH DIAMOND DRILL HOLES 23 AND 24



Topography and geology by J. S. Livermore, P.W. Richards, and F. C. Gros, September 1941, and G. A. Rynearson, June 1942

GEOLOGIC OUTCROP MAP, SECTIONS, AND PROJECTION OF THE CERRO COLORADO CHROMITE DEPOSIT, SISKIYOU COUNTY, CALIFORNIA