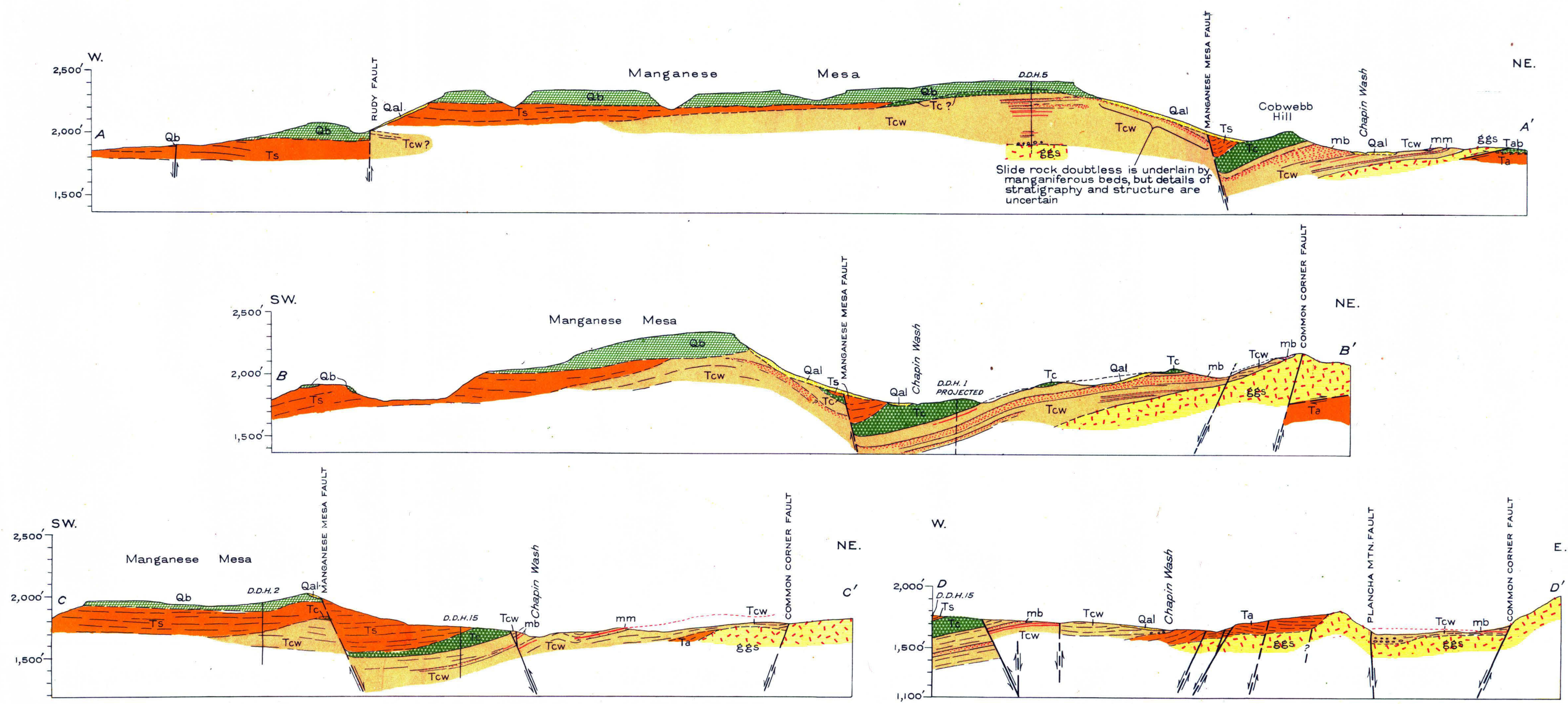


Base from M.A.Hanna Company maps by S.N.Webber

Geology by S.G.Lasky, assisted by R.J. Roberts. Surveyed in 1938



GEOLOGIC MAP AND SECTIONS OF THE AREA ALONG MAGGIE CANYON AND THE UPPER PART OF CHAPIN WASH, ARTILLERY MOUNTAINS, ARIZONA

1000 0 4,000 Feet

Contour interval 25 feet
Datum is mean sea level
1949