

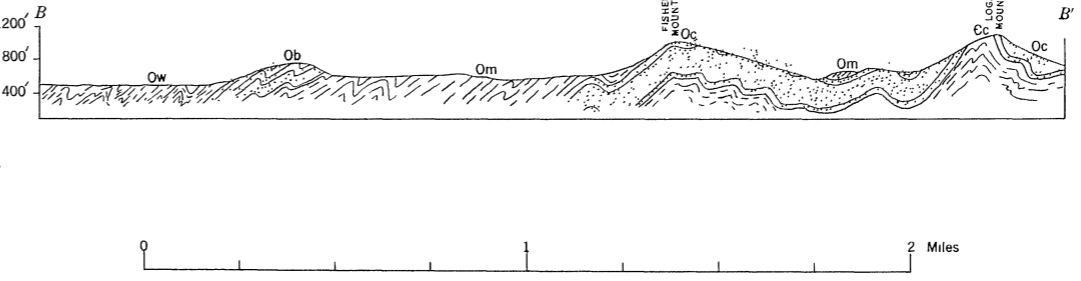
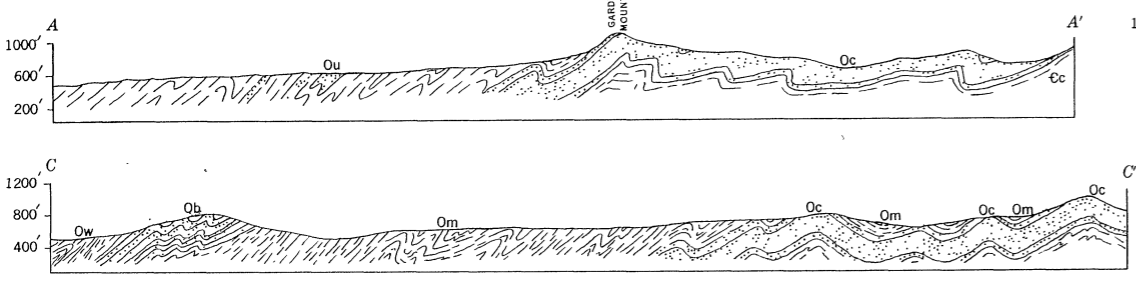
- EXPLANATION**
- Ow  
Womble shale
  - Ob  
Blakely sandstone (Interfingers with shale in western part of area)
  - Om  
Mazarn shale
  - Oc  
Crystal Mountain sandstone
  - Oc  
Collier shale
- ORDOVICIAN  
ORDOVICIAN(?)  
CAMBRIAN

- Oscillator quartz locality
- Quartz mine
- Quartz prospect
- Contact, dashed where approximately located
- Anticline, showing trace of axial plane and bearing and plunge of axis Dashed where approximately located
- Overturned anticline showing trace of axial plane
- Strike and dip of beds
- Strike and dip of joints

- EXPLANATION**  
For section only
- Ow  
Womble shale
  - Ob  
Blakely sandstone
  - Om  
Mazarn shale
  - Oc  
Crystal Mountain sandstone
  - Oc  
Collier shale
- ORDOVICIAN  
ORDOVICIAN(?)  
CAMBRIAN

Base from township plats, U. S. Department of Agriculture Forest Service

Geology by A. E. J. Engel, Dec. 1942-Jan. 1943



GEOLOGIC MAP AND SECTIONS OF THE FISHER MOUNTAIN AREA, MONTGOMERY COUNTY, ARKANSAS