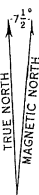
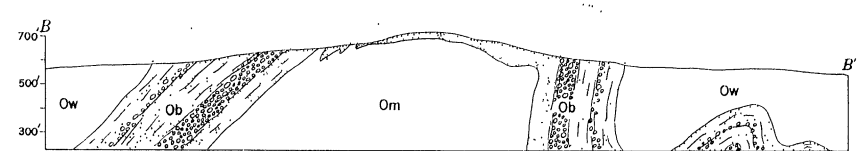
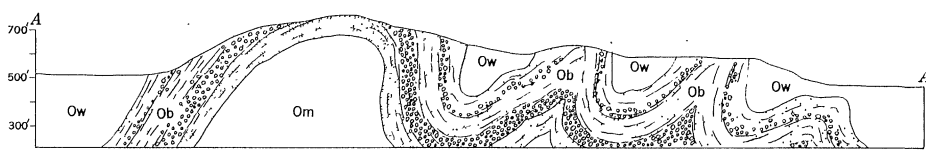
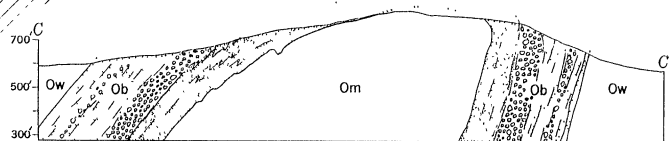
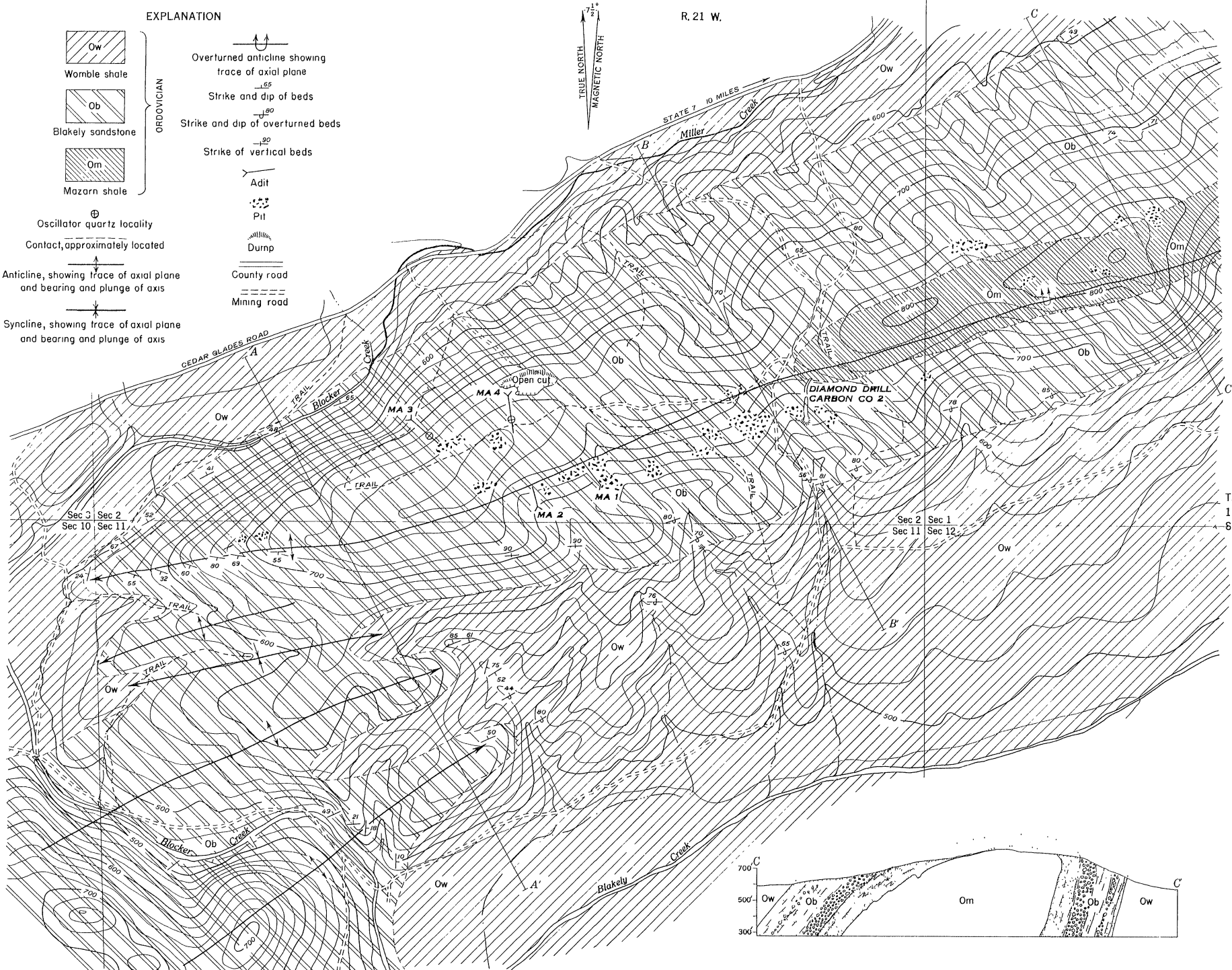


EXPLANATION

- |                   |  |
|-------------------|--|
|                   |  |
| Wombly shale      | Overturbed anticline showing trace of axial plane                      |
|                   |  |
| Blakely sandstone | Strike and dip of beds   |
| ORDOVICIAN        |  |
|                   | Strike and dip of overturned beds                                      |
|                   |  |
| Mazarn shale      | Strike of vertical beds  |
|                   | Adit   |
|                   | Pit  |
|                   | Oscillator quartz locality   |
|                   | Contact, approximately located   |
|                   | Anticline, showing trace of axial plane and bearing and plunge of axis |
|                   | Syncline, showing trace of axial plane and bearing and plunge of axis  |
|                   | Dump   |
|                   | County road  |
|                   | Mining road  |



R. 21 W.



Geology and topography by A. E. J. Engel and R. H. Wilpolt, Jan. 1943

DETAILED GEOLOGIC MAP AND SECTIONS OF PART OF MILLER MOUNTAIN, GARLAND COUNTY, ARKANSAS

400 0 2000 Feet

Contour interval 20 feet  
Datum is approximate mean sea level

954712 O - 52 (In pocket)