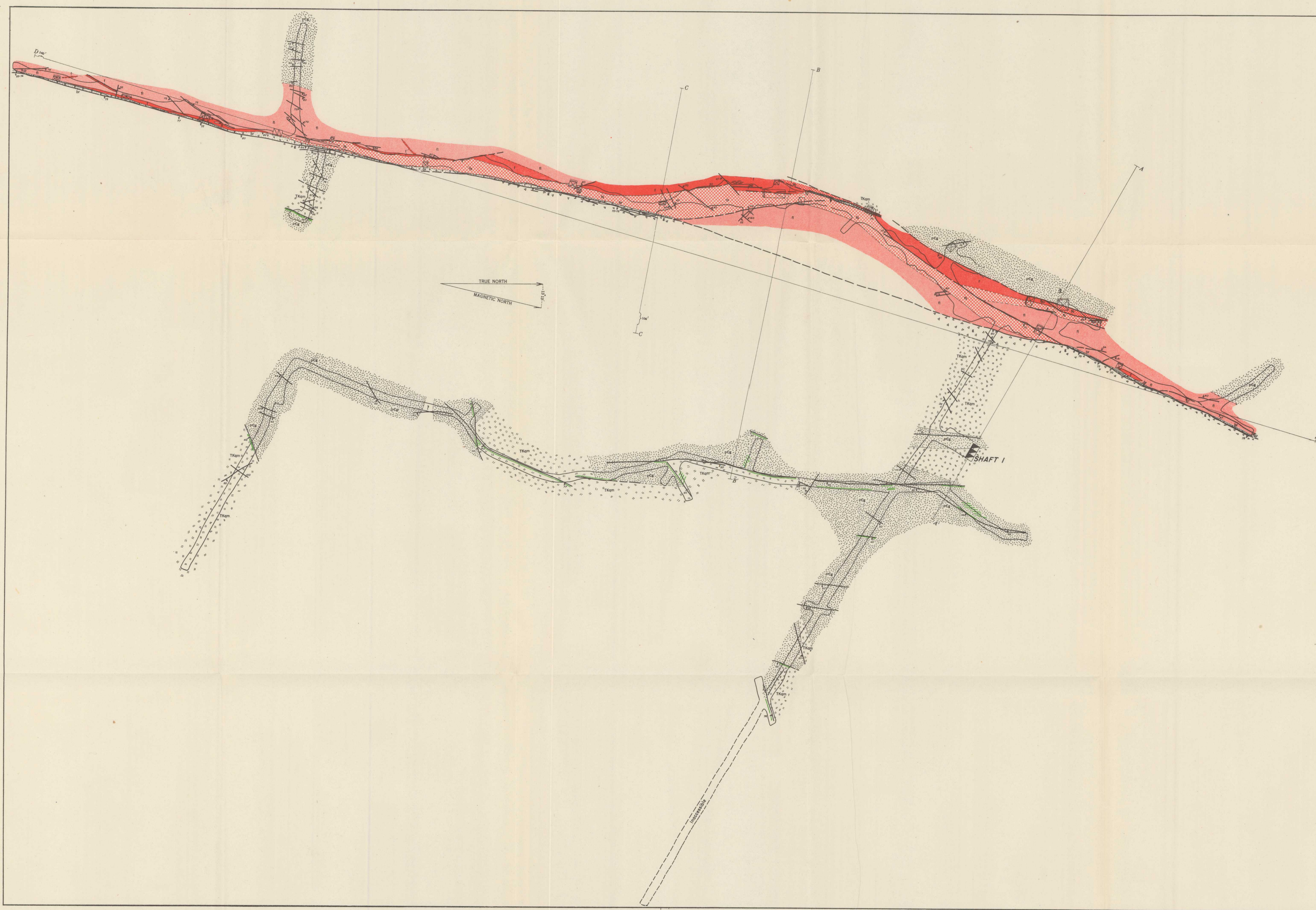


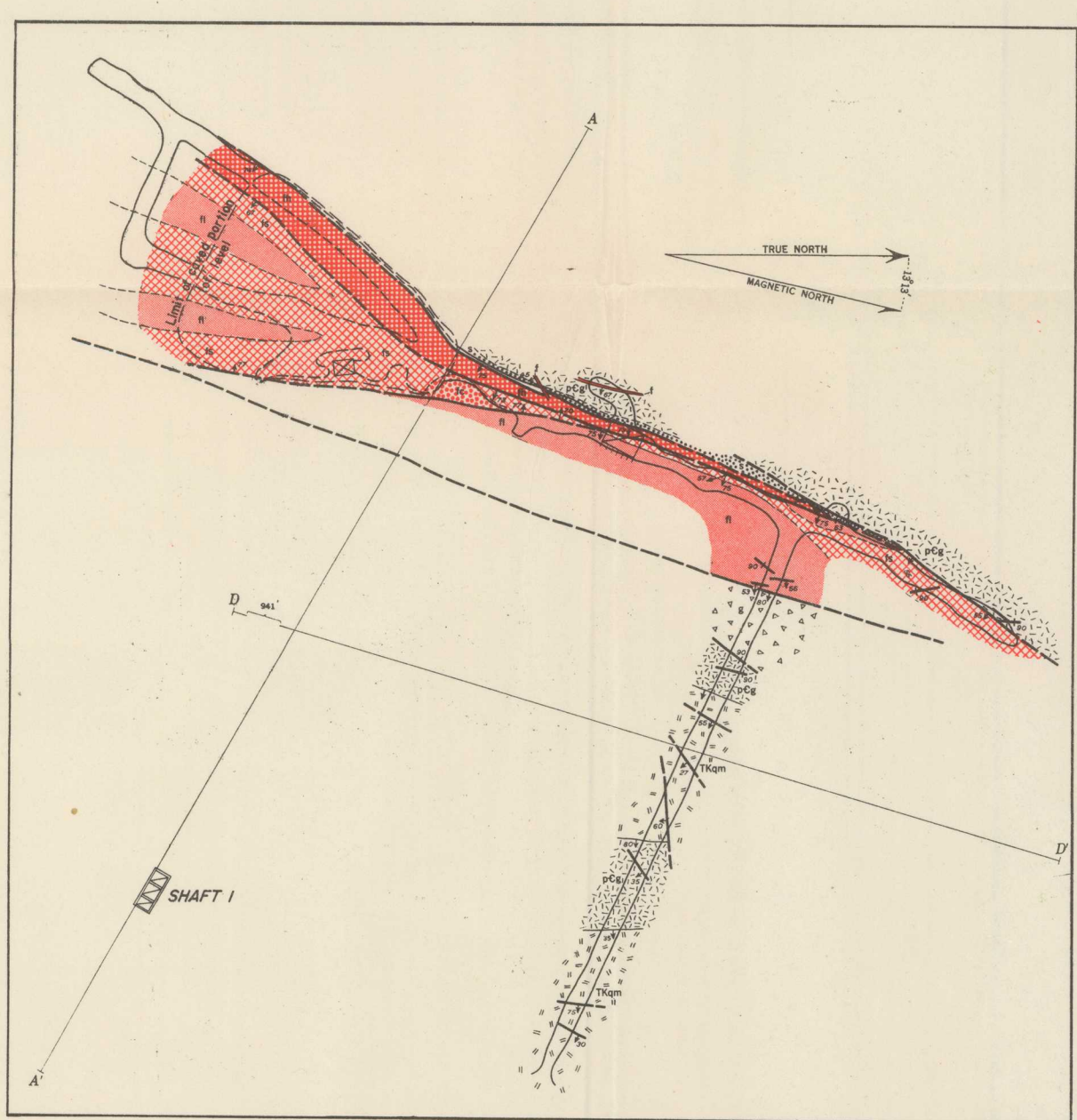
COMPOSITE LEVEL MAP



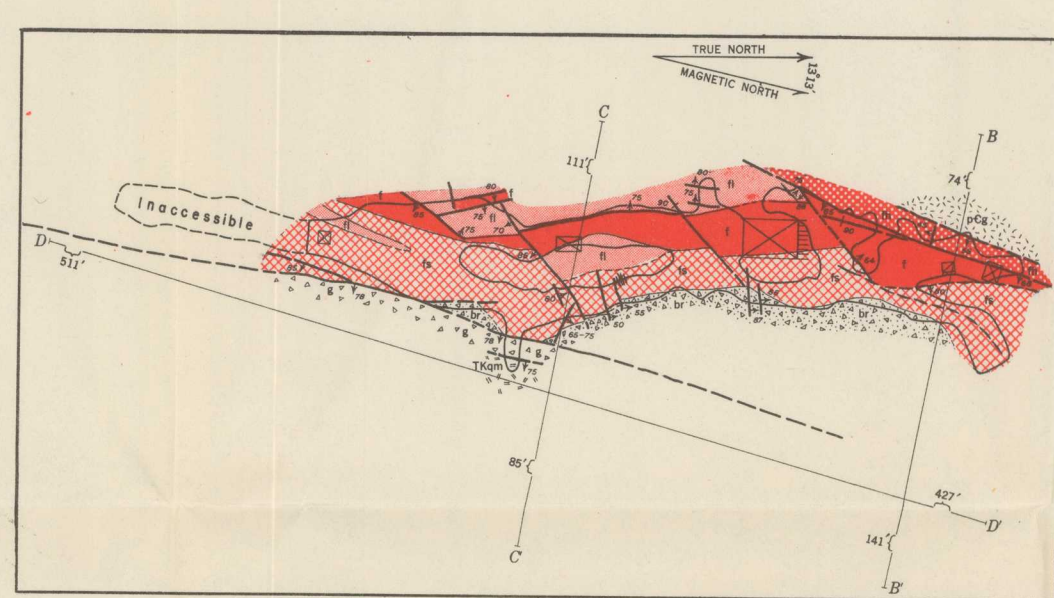
260 LEVEL

EXPLANATION

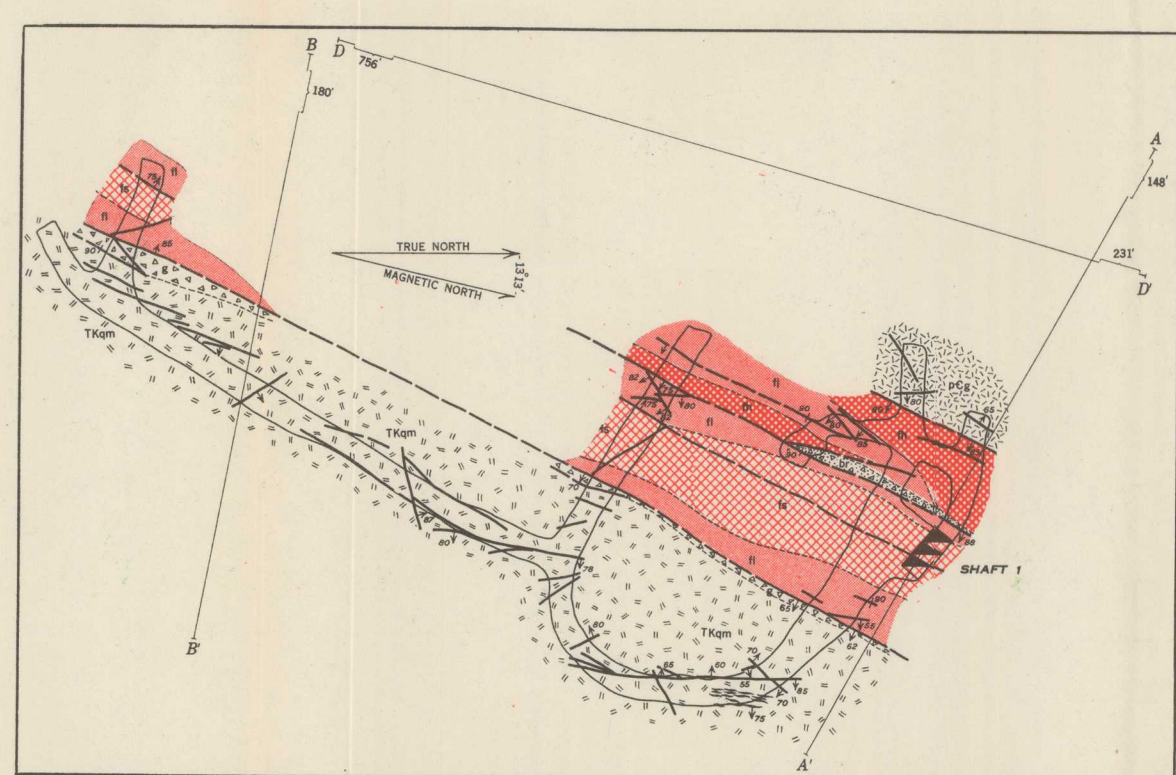
	Quartz monocrystalline epoxy
	Quartz monocrystalline silica dike
	Granite
	Fluorspar breccia, hard
	Fluorspar vein
	Fluorspar breccia, soft
	Fluorspar with nodules
	Breccia and low-grade fluorospar
	Barren breccia with vein zone
	Gneiss and breccia outside of vein zone
	Silicified rock
	Copper vein
	Contact, showing dip
	Fault, showing dip
	Fault, showing dip
	Vertical fault
	Fracture or shattered zone, showing dip
	Vertical fracture or shattered zone
	Three-compartment shaft
	Foot of raise or winze
	Foot of inclined raise or winze
	Head of vertical raise or winze
	Head of inclined raise or winze



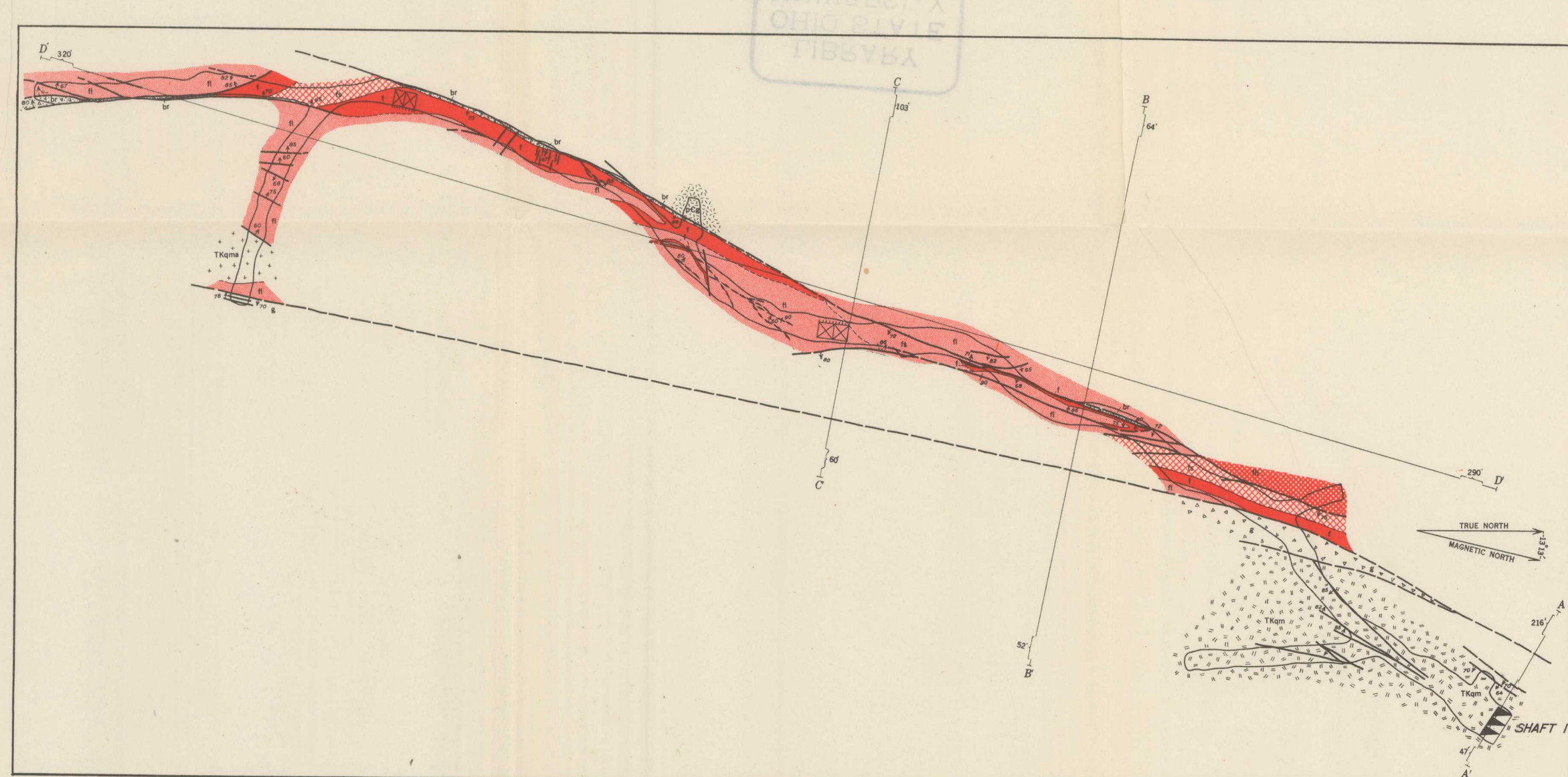
ADIT LEVEL



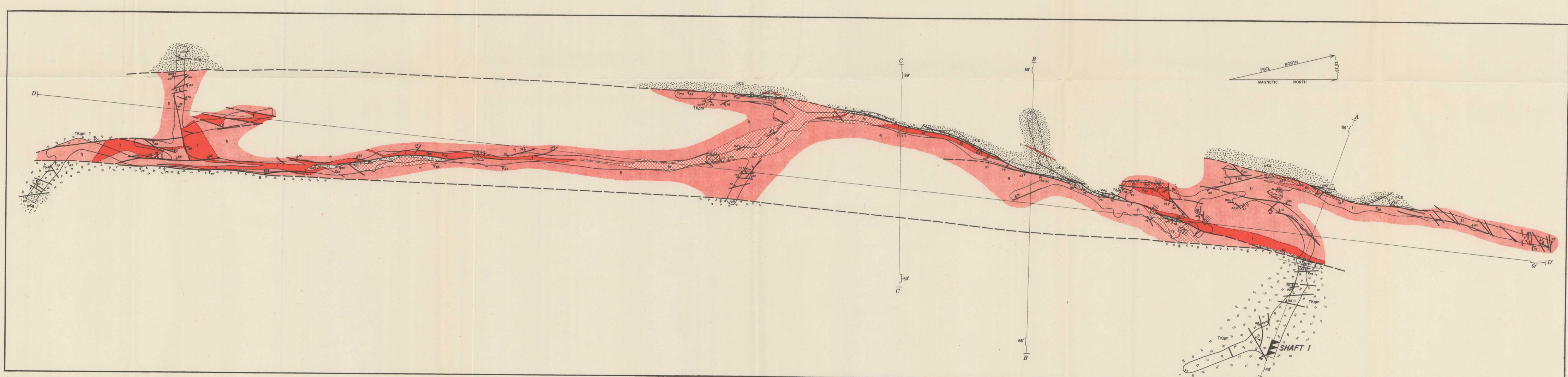
300 SUBLEVEL



650 LEVEL



500 LEVEL



400 LEVEL

UNDERGROUND LEVEL MAPS OF THE BURRO CHIEF FLUORSPAR MINE, BURRO MOUNTAINS, GRANT COUNTY, NEW MEXICO

See Map Sheet Plate 48, 49.

951814 G-51

Geology by Elmer Gillerman and T. G. Loring, March, 1950