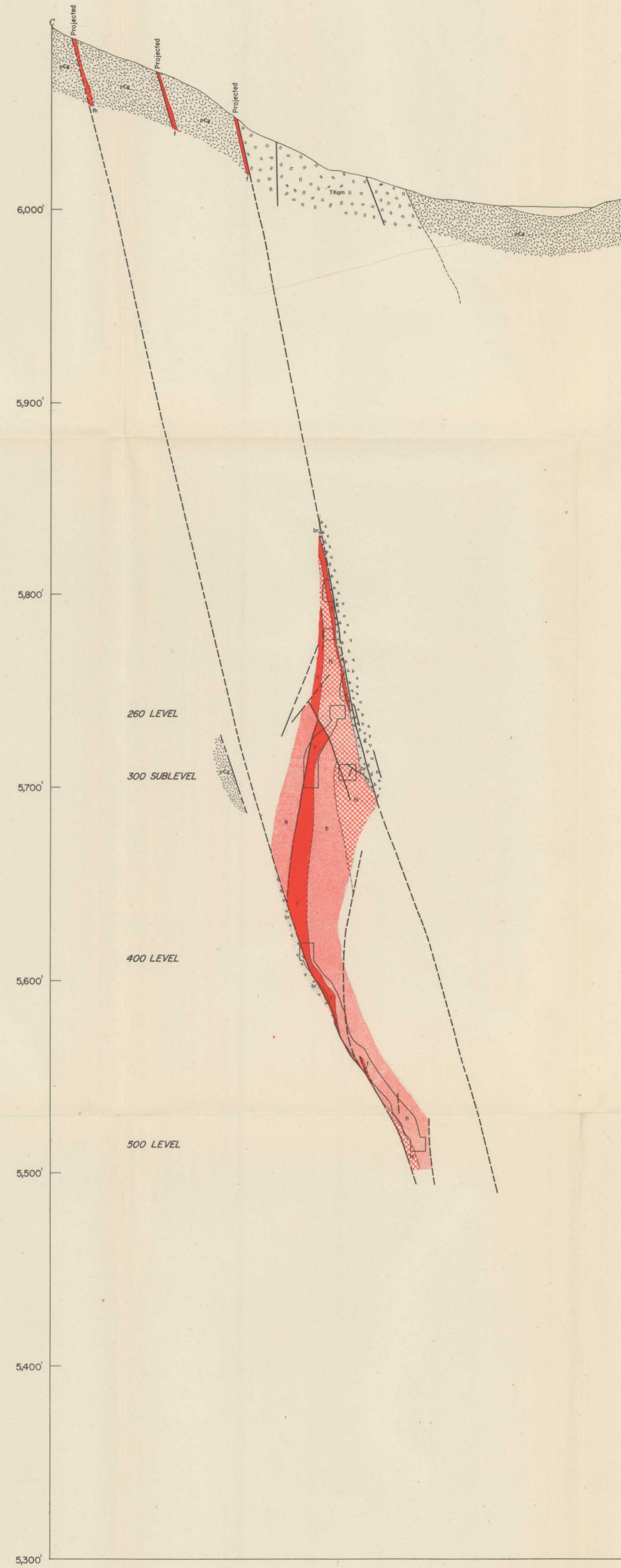
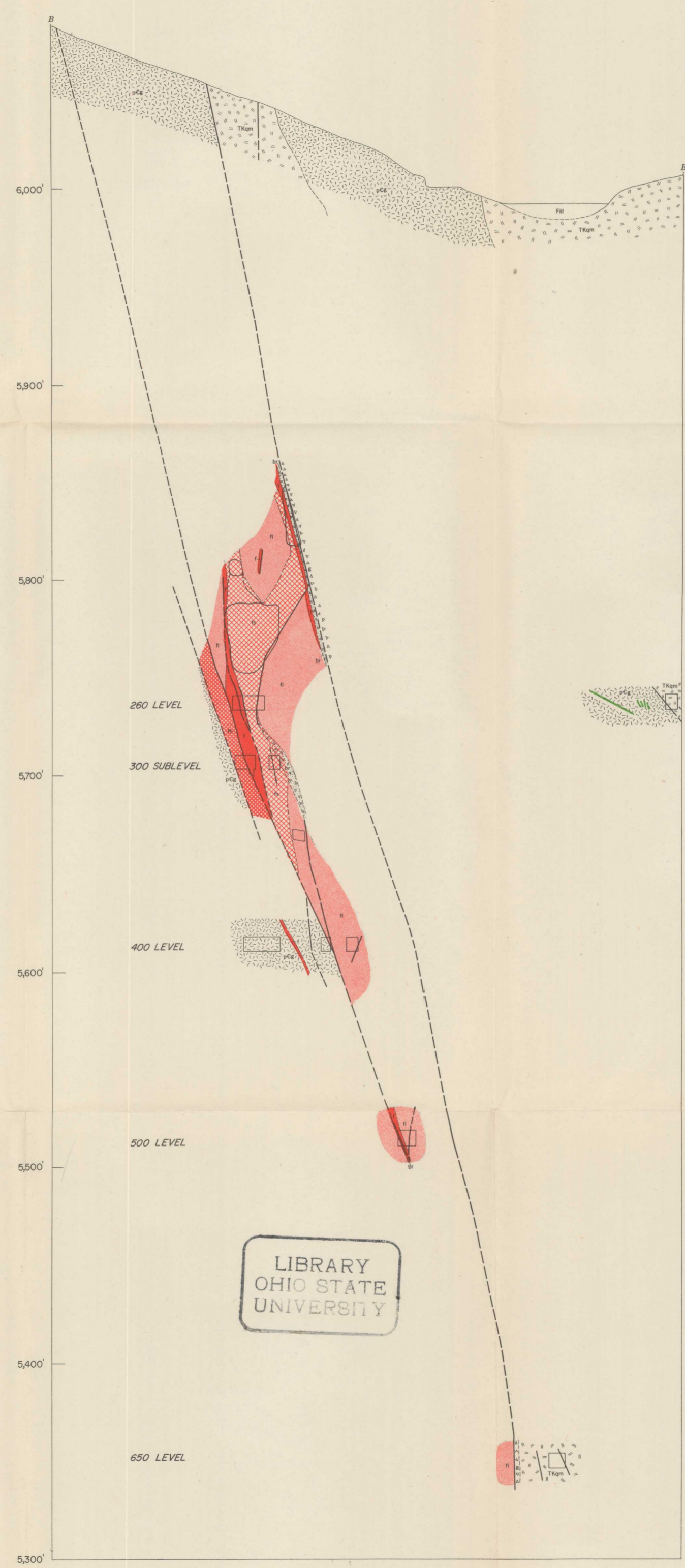
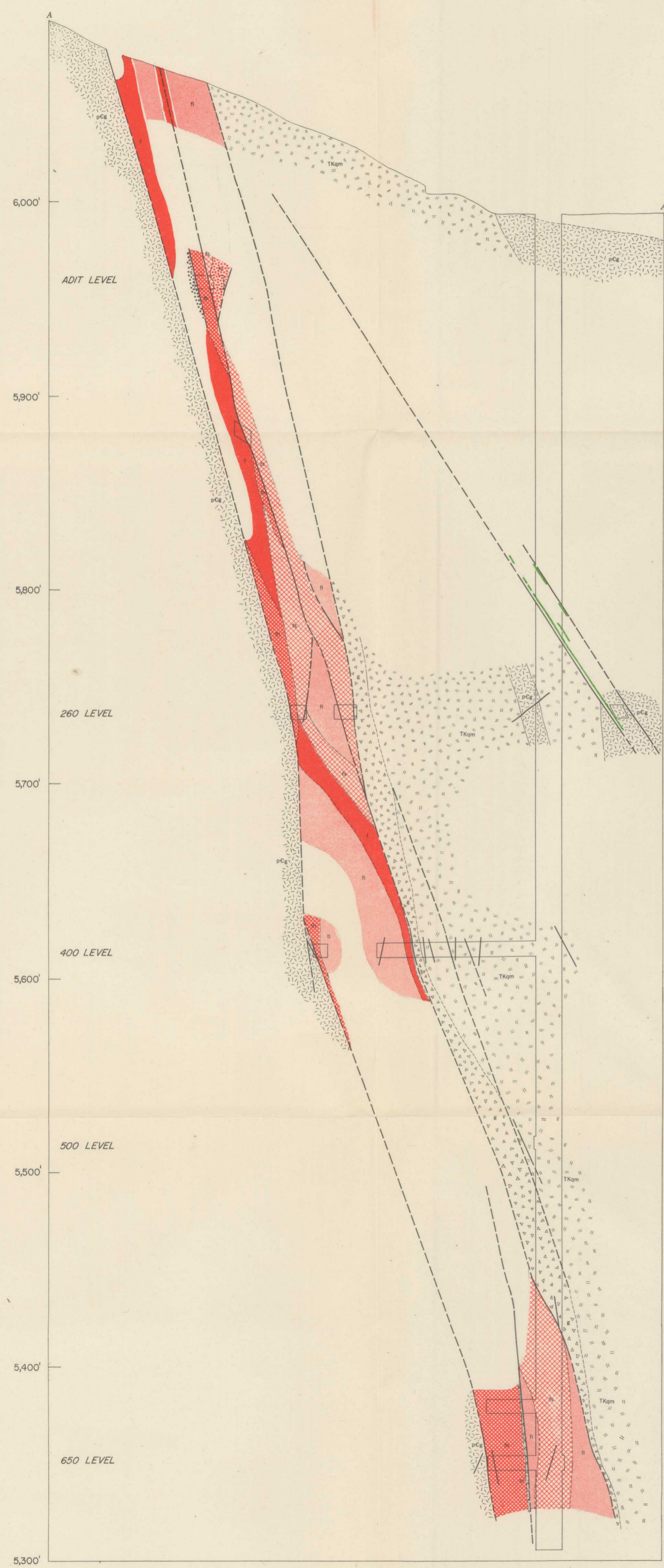
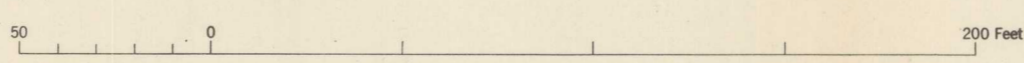


- EXPLANATION
- Quartz monzonite porphyry
 - Granite
 - Fluorspar breccia, hard
 - Fluorspar vein
 - Fluorspar breccia, soft
 - Fluorspar with calcite
 - Breccia and low-grade fluorspar
 - Barren breccia within vein zone
 - Gouge and breccia outside of vein zone
 - Silicified rock
 - Copper vein
 - Contact
 - Dashed where approximately located
 - Fault
 - Dashed where approximately located
 - Fracture



LIBRARY
OHIO STATE
UNIVERSITY

CROSS SECTIONS THROUGH THE BURRO CHIEF FLUORSPAR MINE, BURRO MOUNTAINS, GRANT COUNTY, NEW MEXICO



Geology by Eliot Gilman, March, 1950