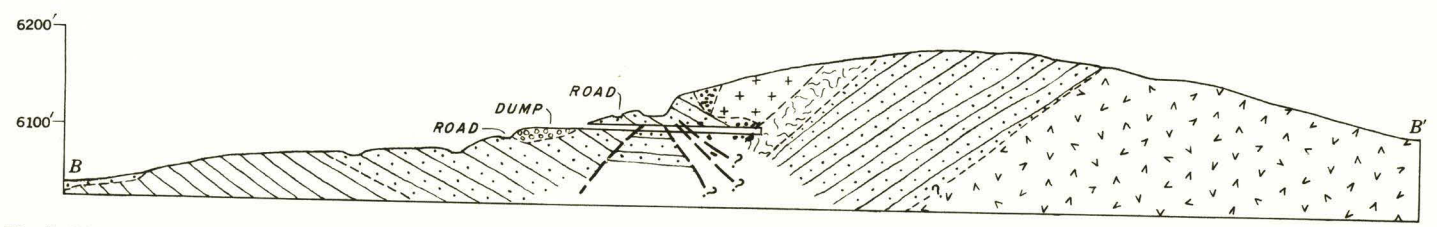
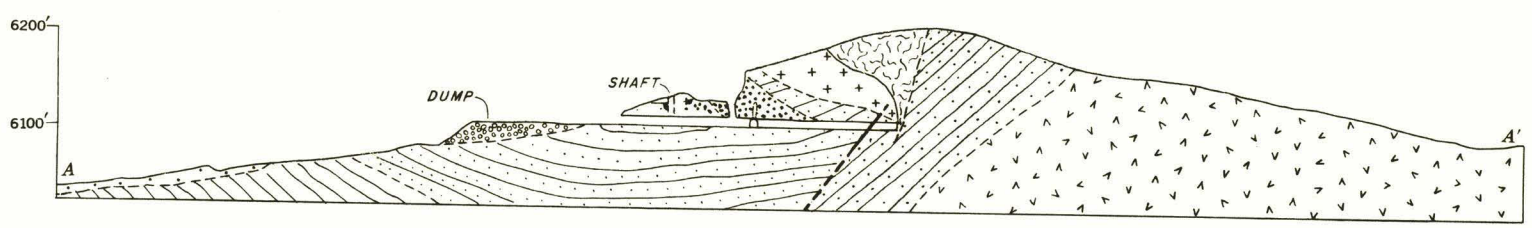


EXPLANATION

- HOT-SPRING DEPOSITS**
- Chalcedony
 - Siliceous sinter
 - Magnesite
- QUATERNARY**
- Alluvium
- TERTIARY**
- MAP SECTION**
- Current tuff, bedded
Alteration (post upper volcanics) shown by stippling; fanglomerate at base
 - Lower volcanics
- Structural Features:**
- Contact
Approximately located
 - Fault
Dashed where approximately located
 - Strike and dip of beds
 - Strike and dip of foliation
 - Shaft
 - Portal and open-cut
 - Open-cut
 - Prospect pits
 - Trench
 - Dump



GEOLOGIC MAP AND SECTIONS OF THE WINDOUS MAGNESITE DEPOSIT, CURRANT CREEK DISTRICT