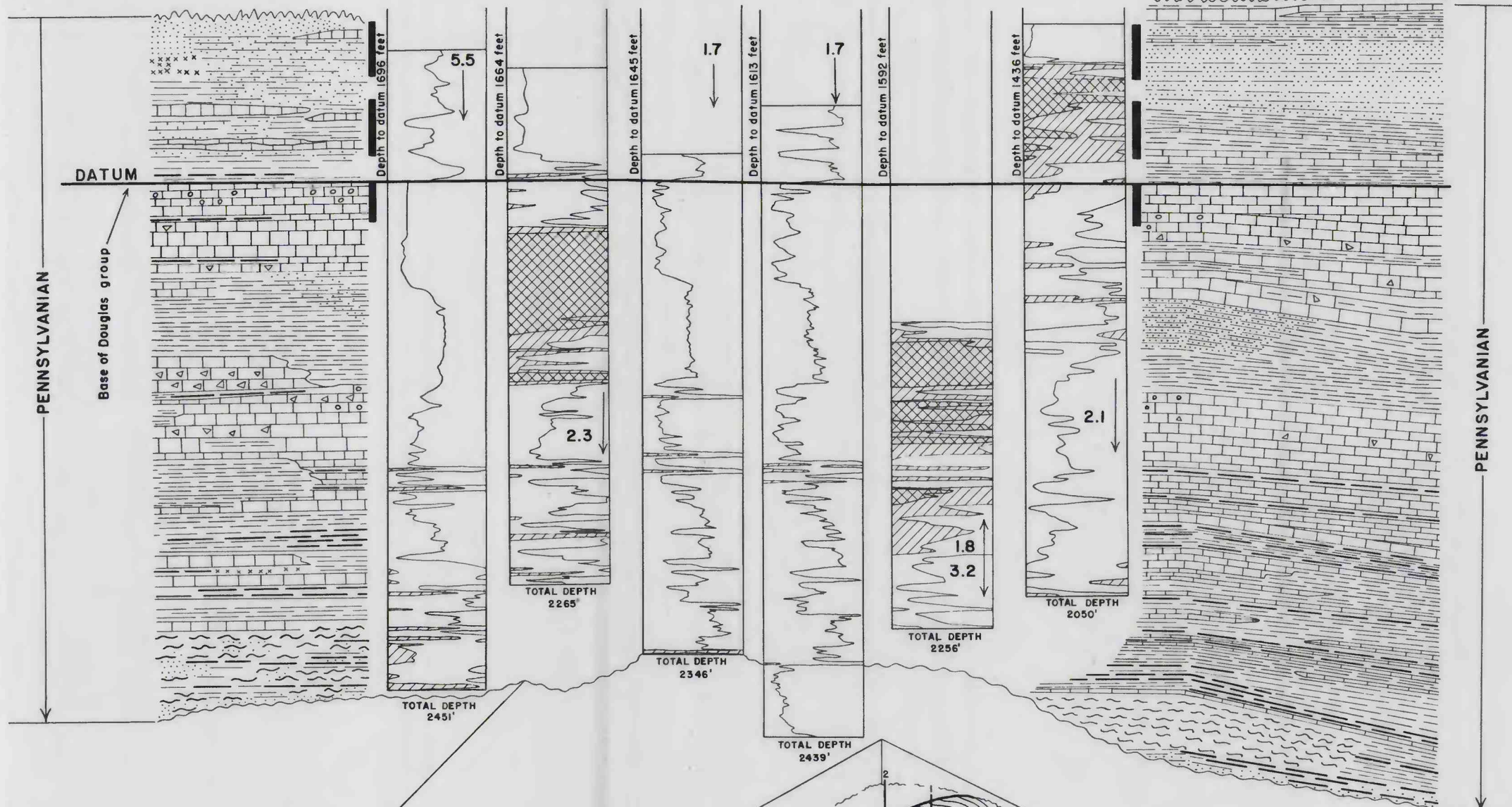


GENERALIZED COLUMNAR SECTION

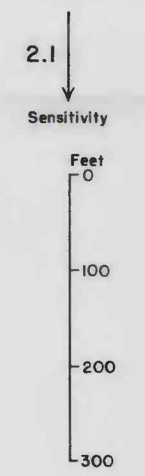
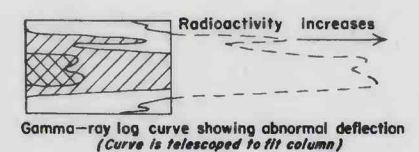
1 Magnolia Petr Co SUITS NO7 NW SW SEC.10, T.27S., R.4E.	2 Magnolia Petr Co ANDERSON NO4 SW NE SE SEC.9, T.27S., R.4E.	3 Rex & Morris Drig Co LOOMIS NO7 SW NE NE SEC.21, T.27S., R.4E.	4 Rex & Morris Drig Co LOOMIS NO6 SW SW NE SEC.21, T.27S., R.4E.	5 Magnolia Petr Co FOSTER NO14 Center of N 1/2 NW SE SEC.21, T.27S., R.4E.	6 Magnolia Petr Co FOSTER NO3 SW NW SE SEC.21, T.27S., R.4E.
--	---	--	--	--	--

GENERALIZED COLUMNAR SECTION

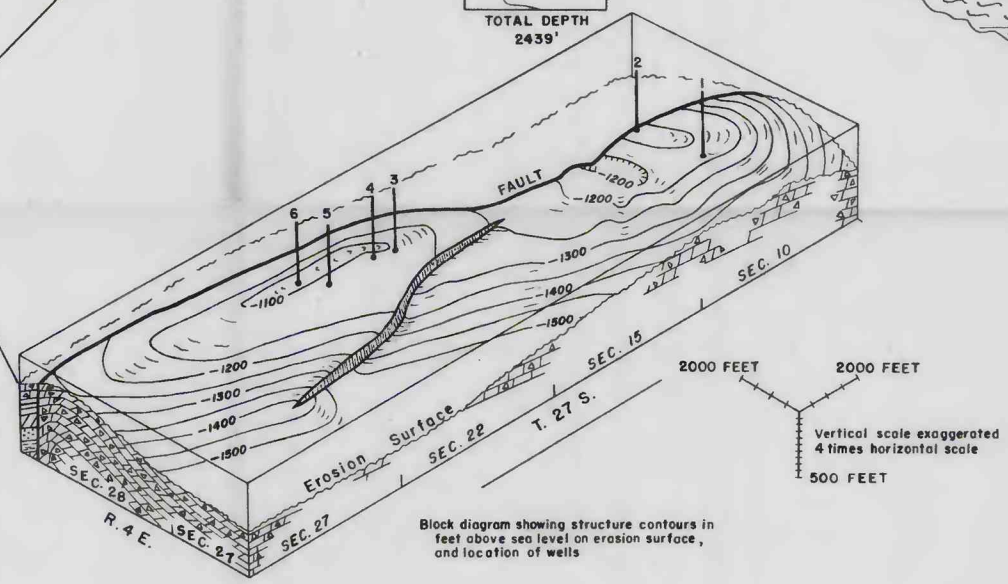
EXPLANATION



- Limestone
- Dolomite
- Oolitic limestone
- Cherty limestone
- Cherty dolomite
- Black shale
- Gray shale
- Gray sandy shale
- Variegated shale
- Red shale
- Sandstone
- Helium-producing horizons



Early Pennsylvanian to late Mississippian
erosional surface



RADIOACTIVITY AND LITHOLOGY IN THE NORTH AUGUSTA FIELD,
BUTLER COUNTY, KANSAS