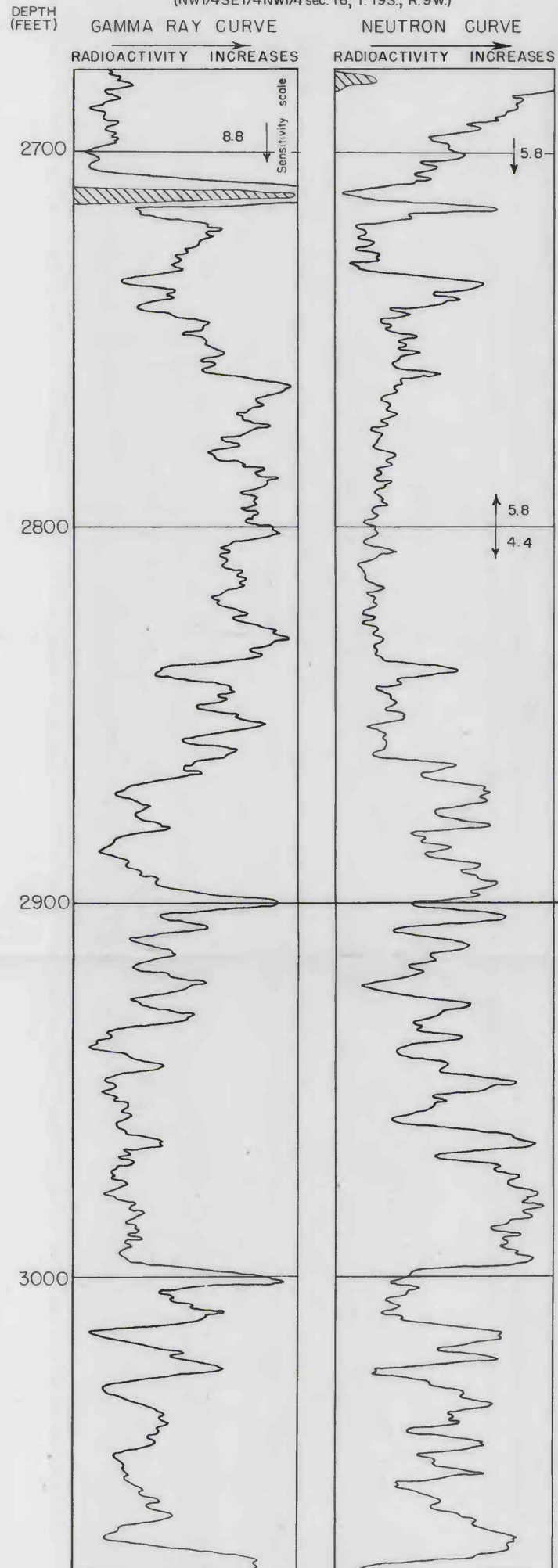
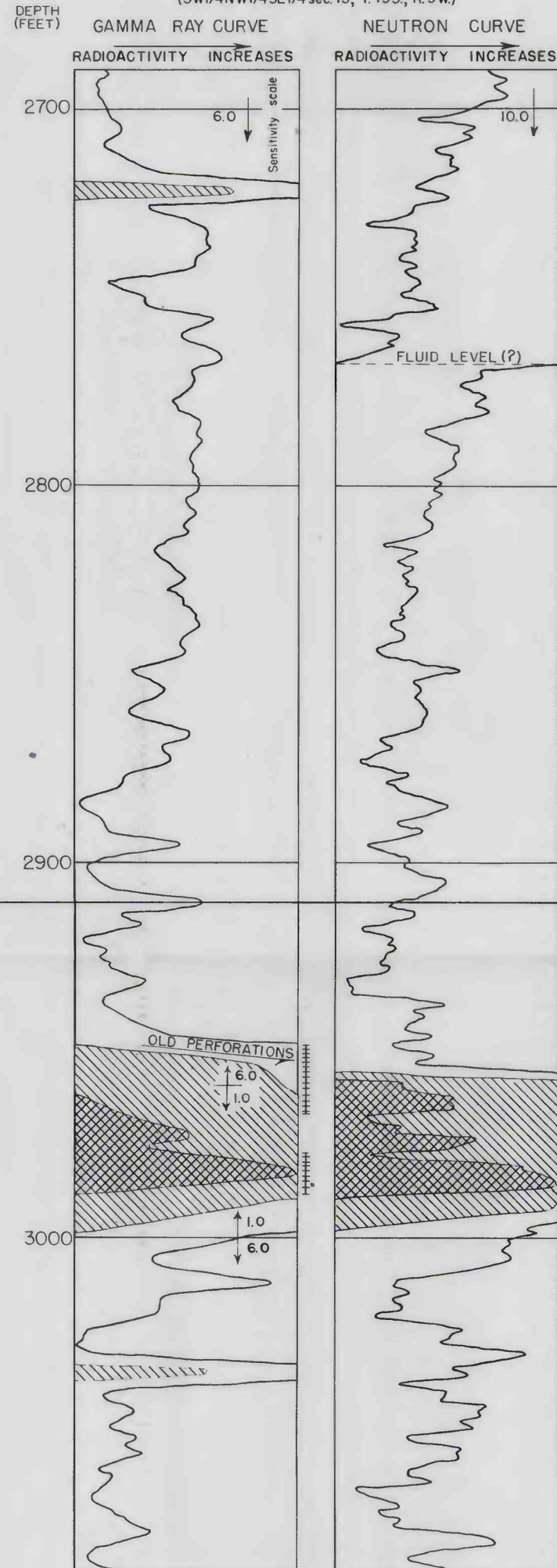


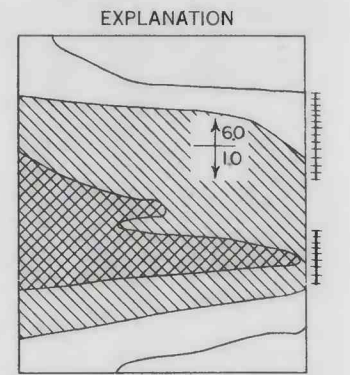
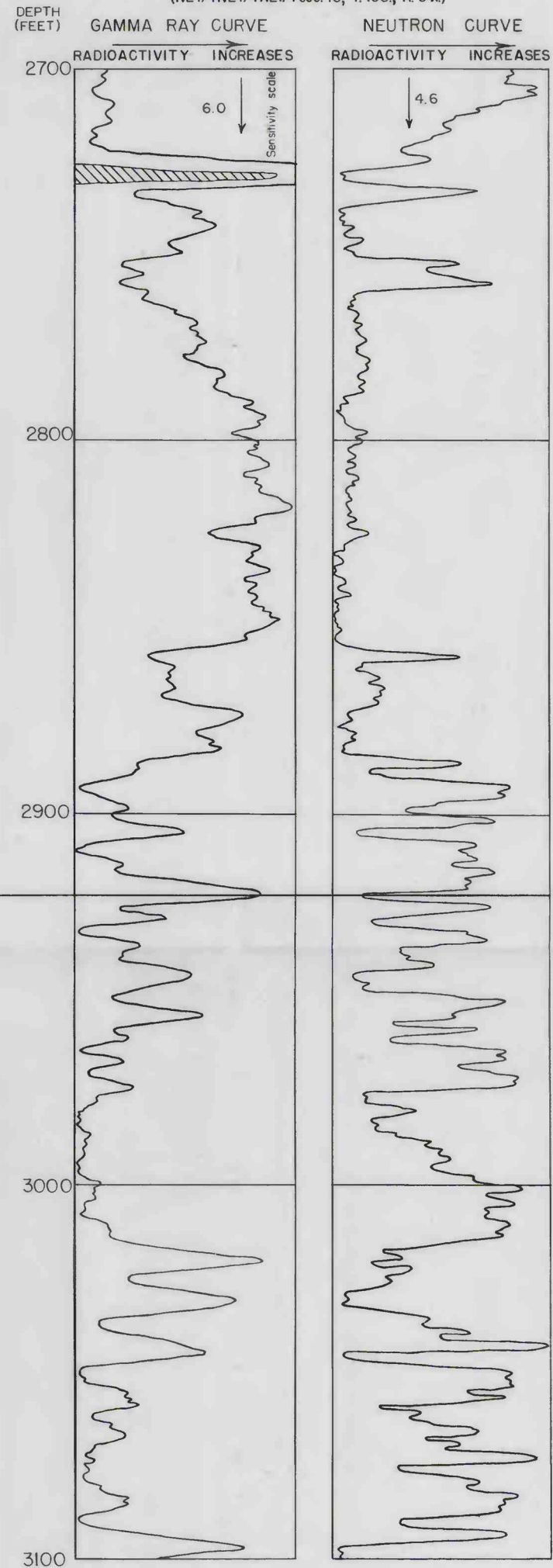
SHELL OIL CO.
SHERMAN "A" NO. 3
(NW1/4SE1/4NW1/4 sec. 16, T. 19S., R. 9W.)



SOHIO PETROLEUM CO.
CRAMM "E" NO. 1
(SW1/4NW1/4SE1/4 sec. 15, T. 19S., R. 9W.)



SHELL OIL CO.
CRAMM "A" NO. 2
(NE1/4NE1/4NE1/4 sec. 15, T. 19S., R. 9W.)



COMPARISON OF NORMAL WITH ABNORMAL RADIOACTIVITY AND CORRELATION OF ABNORMAL RADIOACTIVITY WITH PERFORATED CASING