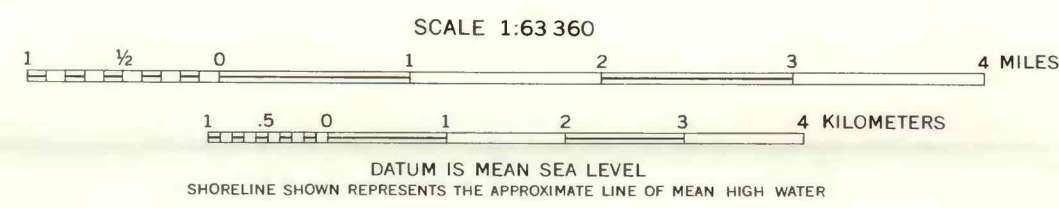
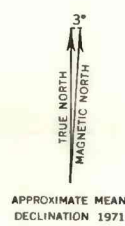
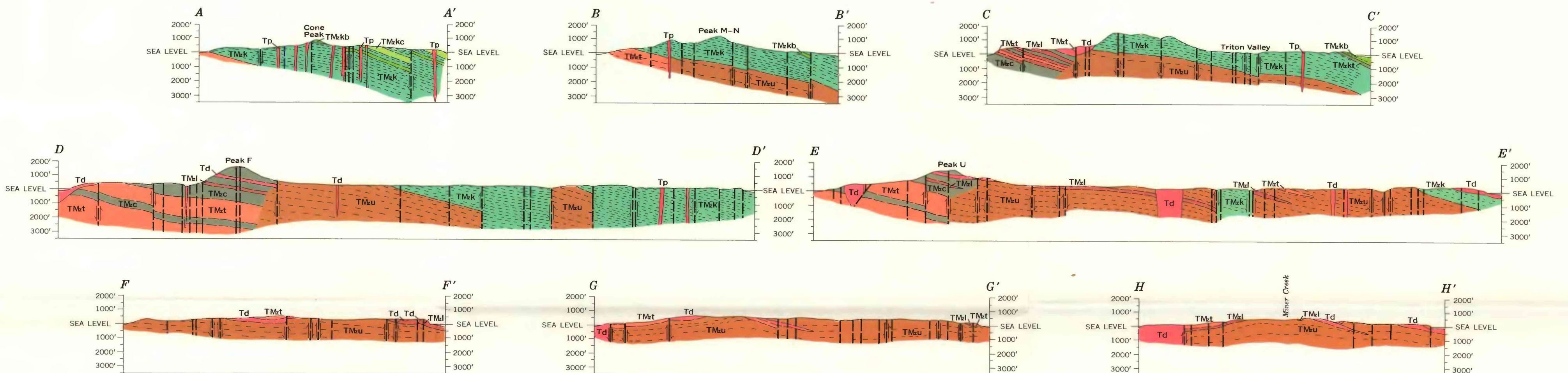


Base from U.S. Geological Survey, Attu 1:250,000, 1953



Geology by Olcott Gates, H. A. Powers, R. E. Wilcox, J. P. Schafer, and F. M. Byers Jr.; 1949-50



INTERIOR—GEOLOGICAL SURVEY, WASHINGTON, D. C.—1971—G49293

GEOLOGIC MAP AND SECTIONS OF AGATTU, NEAR ISLANDS, ALASKA