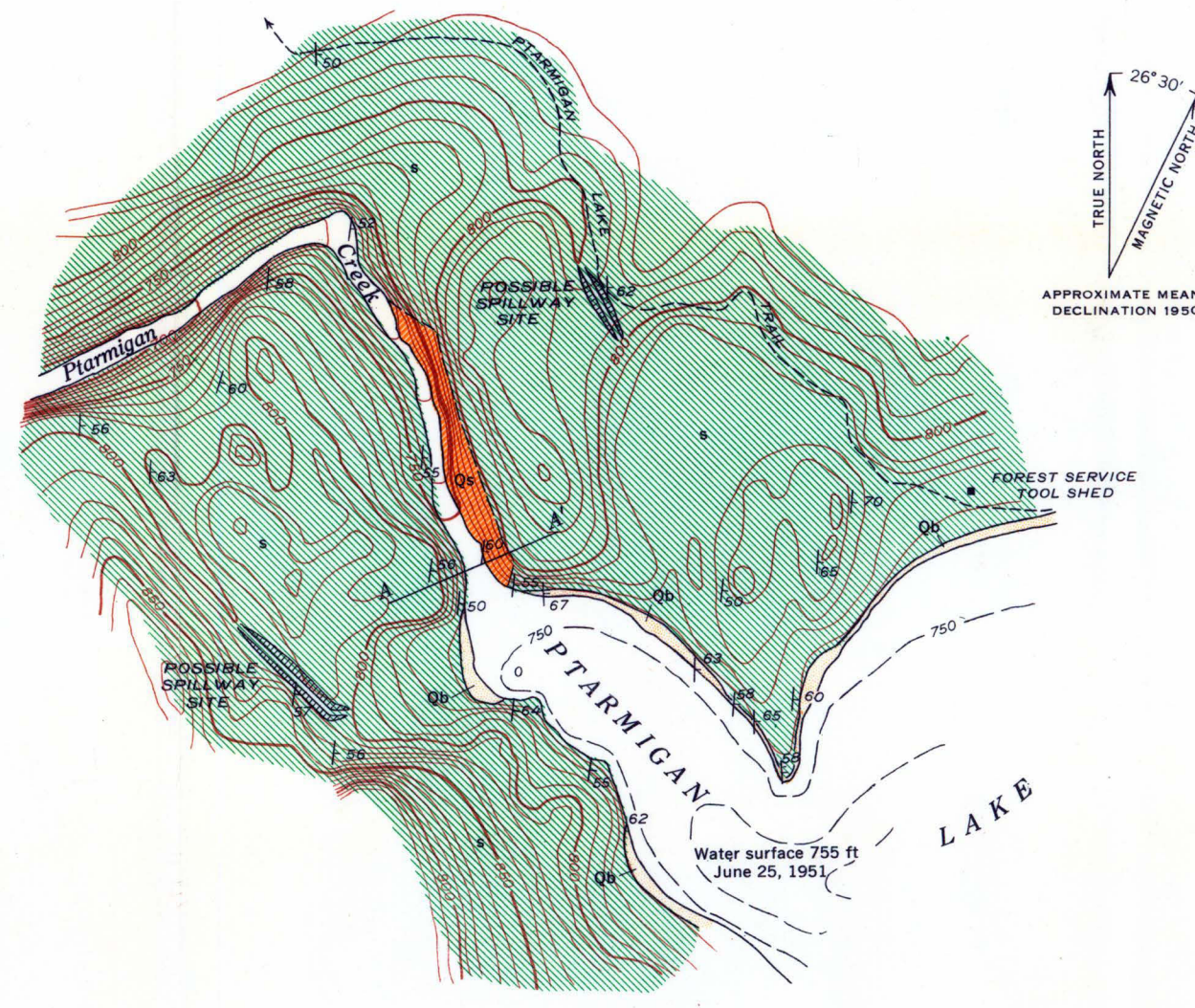
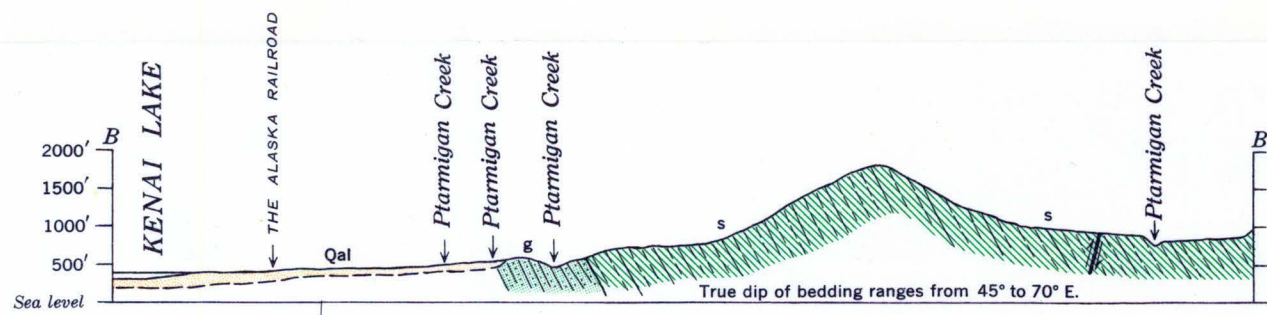
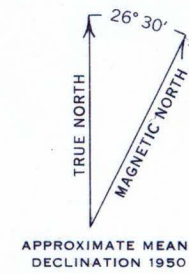
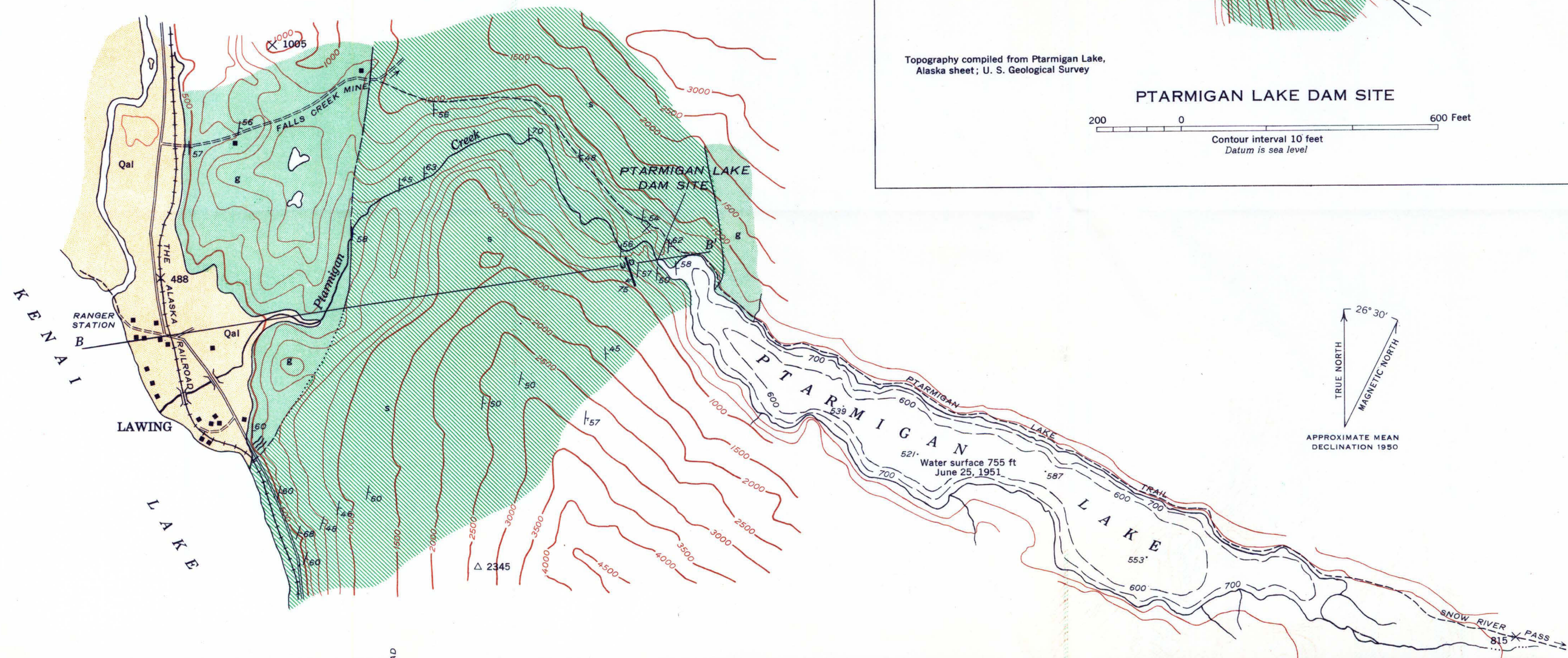
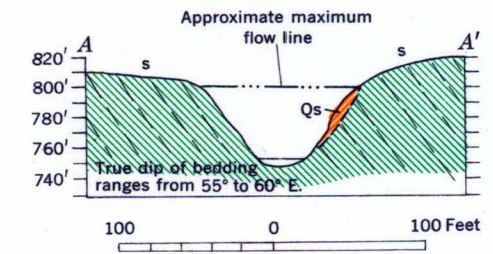
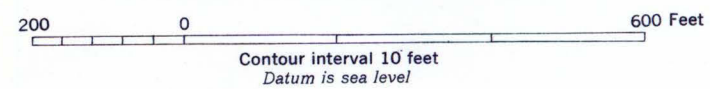


INDEX MAP



Topography compiled from Ptarmigan Lake, Alaska sheet; U. S. Geological Survey

PTARMIGAN LAKE DAM SITE



- EXPLANATION**
- UNCONSOLIDATED DEPOSITS**
- Qal Alluvium  
Predominantly silt, sand, pebble, and cobble gravel
- BEDROCK**
- S Slate  
Black, thinly bedded and slabby slate with minor amounts of graywacke in thin lenses
  - G Graywacke  
Gray to black in color, fine- to medium-grained, hard and massive. Interbedded with conglomerate and quartzite along north side of Ptarmigan Lake
- Contact, dashed where approximately located, dotted where inferred
- Fault, showing dip  
U, upthrown side; D, downthrown side
- Shear zone with slickensided fractures containing as much as 1 1/2 inches of clay gouge
- Strike and dip of bedding  
May be overturned

Topography compiled from Ptarmigan Lake, Alaska sheet, scale 1:24,000, U. S. Geological Survey; and the Grant Lake quadrangle, scale 1:50,000, Corps of Engineers, U. S. Army

GEOLOGIC MAPS AND SECTIONS OF THE DAM SITE, TUNNEL SITE, AND PART OF RESERVOIR SITE AT PTARMIGAN LAKE, ALASKA

