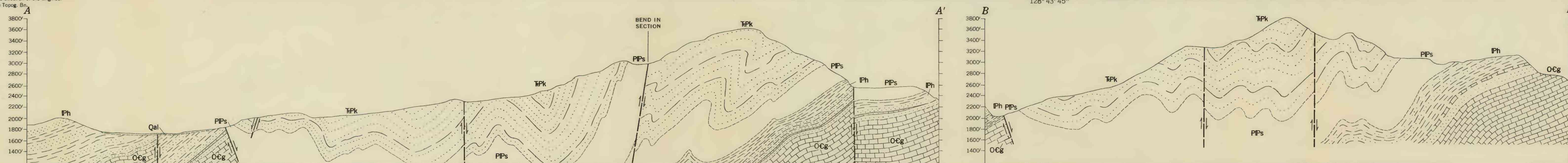


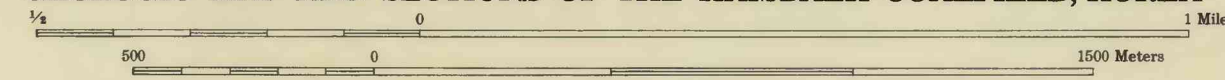


126° 39' 30" Topographic map prepared under the direction of the Engineer
G.H.C. F.E.C. by the 64th Eng. Base Troop, 9th

Geology by Ewart M. Baldwin, 1949



GEOLOGIC MAP AND SECTIONS OF THE HAMBÆK COALFIELD, KOREA



Contour interval 40 feet
Datum is approximate sea level

INTERIOR GEOLOGICAL SURVEY, WASHINGTON, D. C. 20508