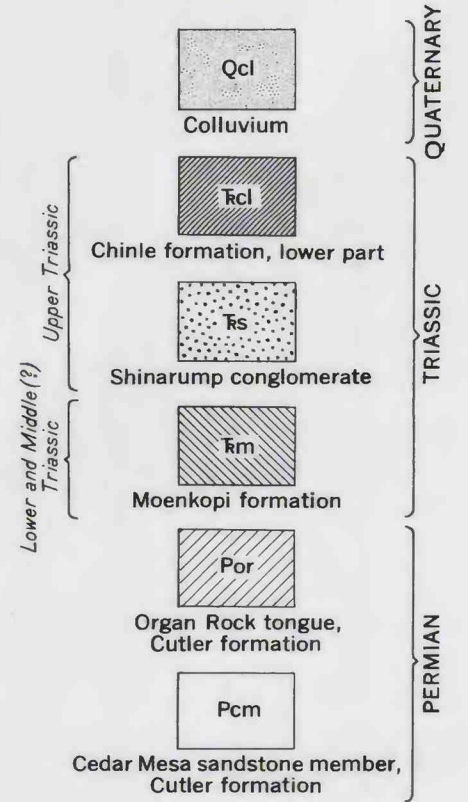
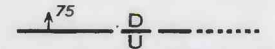


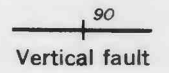
EXPLANATION



Contact, dashed where approximately located, dotted where concealed



Fault, showing dip; dashed where approximately located; dotted where concealed; U, upthrown side; D, downthrown side



Mine

Geology by T. L. Finnell, J. D. Sears, L. C. Huff,
and Roger Morrison, May 1952

GEOLOGIC MAP OF THE JOMAC AREA, SAN JUAN COUNTY, UTAH

